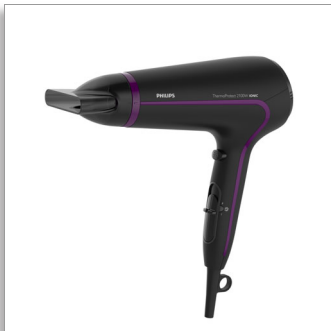




Philips ThermoProtect
Ionic
Hairdryer

2100 W



HP8234/03

Fast dry at a lower temperature with ThermoProtect

with 14 mm styling nozzle

Protect your hair while enjoying fast drying results. Multiple heat and speed settings give the blow dry you want. Features ThermoProtect for fast drying at a constant caring temperature and Ionic Care for frizz-free shine.

Beautifully styled hair

- Professional 2100 W
- Six flexible speed and temperature settings for full control
- Cool Shot sets your style

Less Hair Damage

- Ionic conditioning for shiny, frizz-free hair
- ThermoProtect temperature setting

Easy to use

- Removable air flow filter makes cleaning quick and easy
- 1.8 m power cord
- Easy storage hook for convenient storage

Highlights

ThermoProtect temperature



The ThermoProtect temperature provides the optimal drying temperature and gives additional protection from overheating the hair. With the same powerful airflow, you will get the best results, whilst being kind to your hair.

Speed and temperature settings



The speed and heat required can be easily adjusted to create the perfect style. Six different settings ensure full control for precise and tailored styling.

Ionic conditioning



Give your hair instant care with ionic conditioning. Charged negative ions eliminate static, condition your hair and smooth the hair cuticles to intensify hair's shine and glossiness. The result is smooth and frizz-free hair with beautiful shine.

Cool Shot



A must-have professional function for hair stylists. The Cool Shot button provides an intense burst of cold air. It is used after styling to finish and set the style.

1.8 m cord



Convenient to use thanks to the 1.8-m power cord length.

Easy storage hook



The rubberised hook is located at the base of the handle and provides another storage option, particularly convenient for use in the home or when staying at a hotel.

Removable air inlet filter



The removable air flow filter of your hairdryer is easy to maintain. Simply click off to clean. Doing this regularly will prevent build-up of dust and hair that can affect drying performance.

2100 W



This 2100 W professional hairdryer creates a powerful airflow. The resulting combination of power and speed makes drying and styling your hair quicker and easier.



Philips Green Logo

Philips Green Products can reduce costs, energy consumption and CO2 emissions. How? They offer a significant environmental improvement in one or more of the Philips Green Focal Areas — Energy efficiency, Packaging, Hazardous substances, Weight, Recycling and disposal and Lifetime reliability.

Specifications

Technical specifications

- Voltage: 220-240 V
- Frequency: 50–60 Hz
- Wattage: 2100 W
- Power: 2100 W
- Colour/finishing: High Gloss and Matt Black
- Housing material: ABS
- Motor: DC Motor
- Cord length: 1.8 m

Features

- Foldable handle: No
- Cool shot
- Dual voltage: No
- Travel pouch: No
- Ceramic coating: No
- Ion conditioning
- Hanging loop

- Diffuser: No
- Nozzle / Concentrator: Slim 14-mm styling nozzle
- Number of attachments: 1

Service

- 2 year guarantee

Weight and dimensions

- A-Box Dimensions: Length = 63cm, Width = 35cm, Height = 25 cm
- A-Box Weight: 6.2 kg
- F-Box Dimensions: Depth = 11cm, Height = 23cm, Width = 31cm
- F-Box weight: 0.9 kg
- Product size: Width = 22cm, Height = 31 cm, Length = 10 cm
- Product weight (excl. pack): 0.6 kg



Issue date 2017-12-16

Version: 2.0.1

EAN: 08 71010 36669 74

© 2017 Koninklijke Philips N.V.
All Rights reserved.

Specifications are subject to change without notice.
Trademarks are the property of Koninklijke Philips N.V.
or their respective owners.

www.philips.com