

# Entry level Rack Series

## 2U Compact sever Rackmount Chassis



### Introduction

2U industrial rackmount chassis is a compact 2U chassis, Cooling is essential as so many use 2U as small servers; It has 4\* 8cm ball bearing cooling fans that create positive air pressure within the case.

There are 2x 5.25" exposed and 6 internal 3.5" hard drive bays. The compact size, and cooling make it as an excellent choice. The universal rear window could use Riser card or low profile card together

### Features and Benefits

- Up to 2x 5.25" drivebay+6x3.5" HDD drivebay
- Innovation universal window for all kind of expansion !
- Front access USB2.0\*2
- Standard I/O shield
- Standard PS-2 ATX



Option: 3\*3.5" Hotswap HDD storage kit



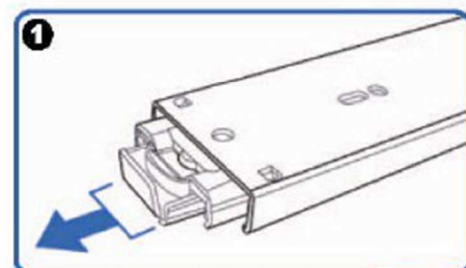
### Specification

Dimension (W*H*D)	19"3.5"*21.65"/ 482*88.9*550(mm)
Material Construction	Heavy-duty and anti-rusty SECC steel,thickness:1.0mm
M/B Size	12"*9.6"
Expansion	Universal expansion for low profile add-on card and riser card together

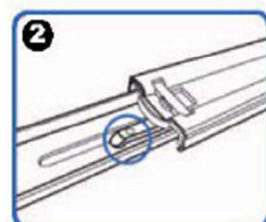
Control & Indicator	1*Power switch +1* Reset switch 1 x LED (power) +2 x LED (HDD) 2*2.0 USB
Cooling Fans	4*8cm Fan in middle
DriveBay	3 x 5.25" + 1 x 3.5" (external) + 6 x 3.5" (internal)
Power Supply	Standard PS-2 ATX Power supply 300w~550w
Sliding rail	18" ball bearing sliding rail (option)
Color	Black / Red / Blue / Green / Silver
Operation Temperature	Up to 50C (122°F)
Operation Humidity (Non-condensing)	Up to 90%
Packing Measurement CBF / CBM	2.1 / 0.059
Packing N.W / G.W	9.0KGS / 11.0KGS

### Option: Three-Sections Heavy-Duty Solid Ball-Bearing Sliding Rails

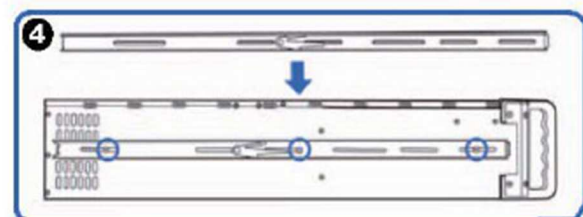
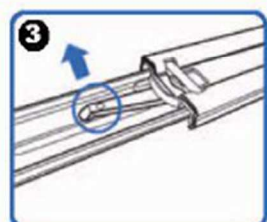
Features: Universal Design to match almost all chassis on market, Heavy-Duty Slide Ball Bearing  
Built-in stop-latch, lock chassis in extended position for easy access ,  
Simply pressing on the plastic levers on each side and slide your case back into the cabinet  
Warranty: 1 Year



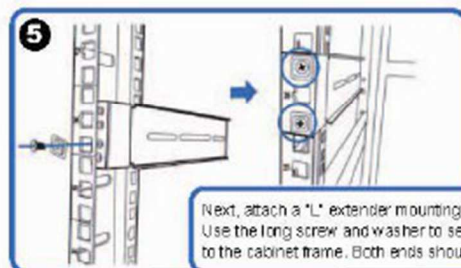
(Pull the center slide all the way out until it reaches the end)



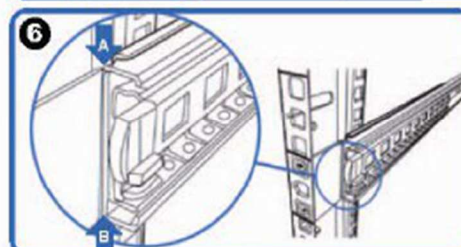
You will see a locking clip at the end point of the center slide. Push it down and unlock the center slide.



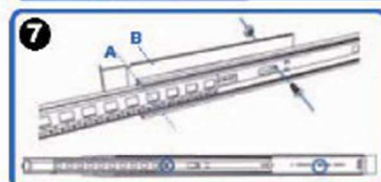
Now put the center slide right next to the rackmount chassis. You should be able to find screw holes on both sides of chassis. Holes are used for mounting the center slide. Later the center slide will be use for attaching the sliding rail.



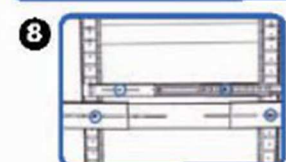
Next, attach a "L" extender mounting bracket on to the cabinet. Use the long screw and washer to secure the "L" extender bracket on to the cabinet frame. Both ends should have the extender bracket.



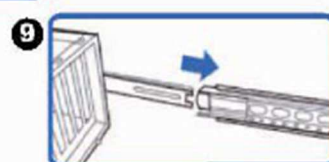
Align front outer rail to the indent of L bracket between Point A & B.



Secure outer rail to L bracket with screws and nuts.



Repeat previous steps to secure sliding rails on both sides.



Reattach inner rail back to center rail.