

## 4 Port USB 2.0 Extender over Gigabit Ethernet or Cat5/6 Cabling - 100m (330ft)

USB2G4LEXT2

DE: Bedienungsanleitung - [de.startech.com](http://de.startech.com)  
 FR: Guide de l'utilisateur - [fr.startech.com](http://fr.startech.com)  
 ES: Guía del usuario - [es.startech.com](http://es.startech.com)  
 IT: Guida per l'uso - [it.startech.com](http://it.startech.com)  
 NL: Gebruiksaanwijzing - [nl.startech.com](http://nl.startech.com)  
 PT: Guia do usuário - [pt.startech.com](http://pt.startech.com)

For full operation instructions and specifications, please visit [www.startech.com/USB2G4LEXT2](http://www.startech.com/USB2G4LEXT2)

### Packaging Contents

- 1 x USB 2.0 Extender Local Unit
- 1 x USB 2.0 Extender Remote Unit
- 1 x USB A-B Cable
- 1 x Universal Power Adapter
- 3 x Power Cords (NA/UK/EU)
- 1 x Mounting Kit
- 1 x Quick Install Guide

### System Requirements

- Windows® 8 (32/64bit), 7 (32/64), Vista(32/64), XP(32/64), 2000, Windows® Server 2012, 2008 R2, 2003(32/64), Windows® CE 6.0, Mac OS 10.x and Linux

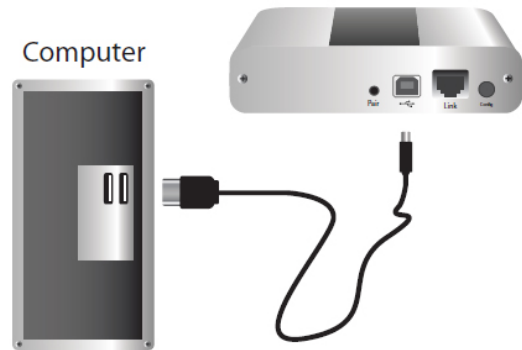
### Installation

**Note:** Before you get started, ensure that all the drivers required for your USB device(s) are installed.

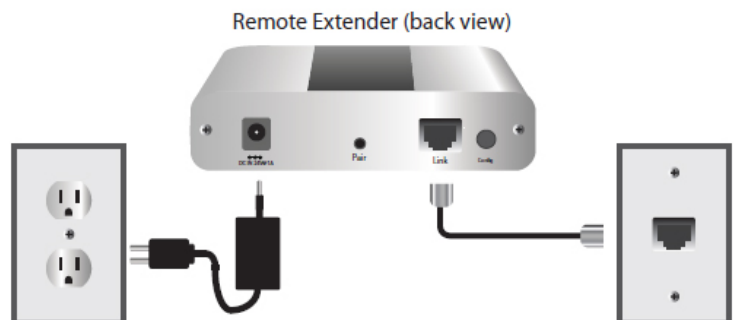
### Network Connect

1. Place the Local Extender where desired and connect the Cat 5e patch cable from the Link port (RJ45) to a network switch or wall network port connected to a switch.

2. Connect the Local Extender to the computer using the included USB cable.

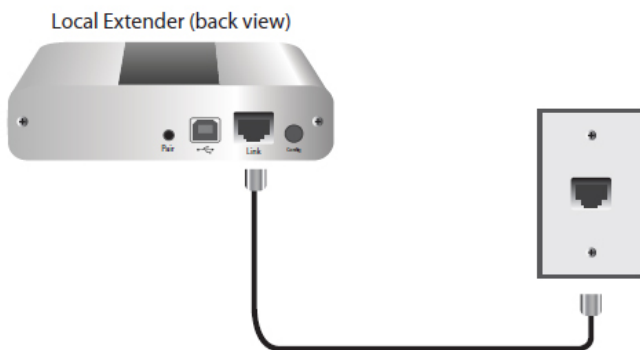


3. Place the Remote Extender where desired. Connect the Cat 5e patch cable from the Link port (RJ45) to a network switch or wall network port connected to a switch and connect the Remote Extender to a power source.

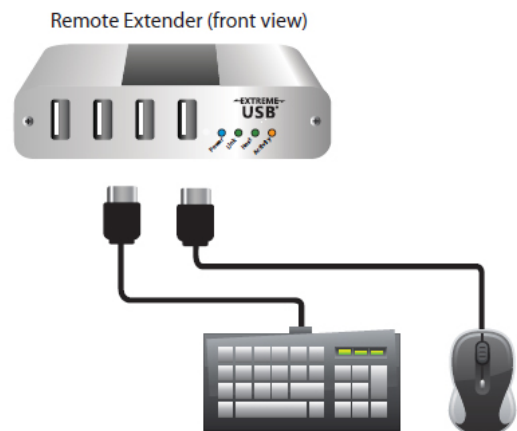


Max 100m between network devices

4. Attach USB device(s) to the Remote Extender.



Max 100m between network devices

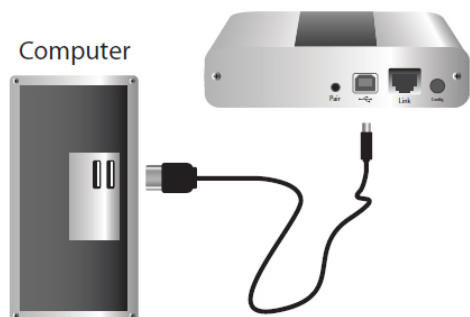


## Direct Connect

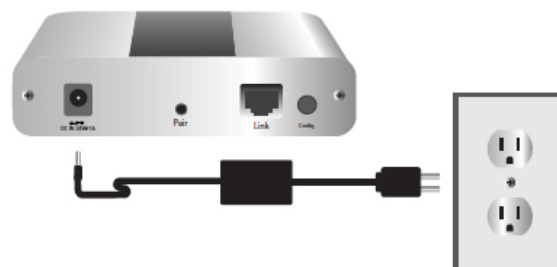
1. Place extenders where desired and connect the Cat 5e extension link cabling to the Link ports (RJ45) on the Local and Remote Extender.



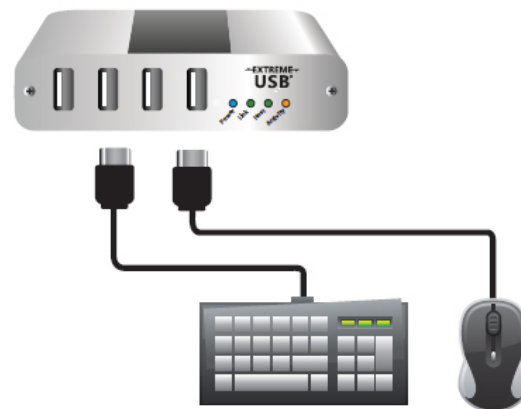
2. Connect the Local Extender to the computer using the included USB cable.



3. Connect the Remote Extender to the AC adapter and a power source.



4. Attach USB device(s) to the Remote Extender.



## FCC Compliance Statement

This equipment has been tested and found to comply with the limits for a Class B digital device, pursuant to part 15 of the FCC Rules. These limits are designed to provide reasonable protection against harmful interference in a residential installation. This equipment generates, uses and can radiate radio frequency energy and, if not installed and used in accordance with the instructions, may cause harmful interference to radio communications. However, there is no guarantee that interference will not occur in a particular installation. If this equipment does cause harmful interference to radio or television reception, which can be determined by turning the equipment off and on, the user is encouraged to try to correct the interference by one or more of the following measures:

- Reorient or relocate the receiving antenna.
- Increase the separation between the equipment and receiver.
- Connect the equipment into an outlet on a circuit different from that to which the receiver is connected.
- Consult the dealer or an experienced radio/TV technician for help.

## Use of Trademarks, Registered Trademarks, and other Protected Names and Symbols

This manual may make reference to trademarks, registered trademarks, and other protected names and/or symbols of third-party companies not related in any way to StarTech.com. Where they occur these references are for illustrative purposes only and do not represent an endorsement of a product or service by StarTech.com, or an endorsement of the product(s) to which this manual applies by the third-party company in question. Regardless of any direct acknowledgement elsewhere in the body of this document, StarTech.com hereby acknowledges that all trademarks, registered trademarks, service marks, and other protected names and/or symbols contained in this manual and related documents are the property of their respective holders.

## Technical Support

StarTech.com's lifetime technical support is an integral part of our commitment to provide industry-leading solutions. If you ever need help with your product, visit [www.startech.com/support](http://www.startech.com/support) and access our comprehensive selection of online tools, documentation, and downloads.

For the latest drivers/software, please visit [www.startech.com/downloads](http://www.startech.com/downloads)

## Warranty Information

This product is backed by a two year warranty.

In addition, StarTech.com warrants its products against defects in materials and workmanship for the periods noted, following the initial date of purchase. During this period, the products may be returned for repair, or replacement with equivalent products at our discretion. The warranty covers parts and labor costs only. StarTech.com does not warrant its products from defects or damages arising from misuse, abuse, alteration, or normal wear and tear.

## Limitation of Liability

In no event shall the liability of StarTech.com Ltd. and StarTech.com USA LLP (or their officers, directors, employees or agents) for any damages (whether direct or indirect, special, punitive, incidental, consequential, or otherwise), loss of profits, loss of business, or any pecuniary loss, arising out of or related to the use of the product exceed the actual price paid for the product. Some states do not allow the exclusion or limitation of incidental or consequential damages. If such laws apply, the limitations or exclusions contained in this statement may not apply to you.