



SA5225

SA5245

SA5247

SA5285

SA5287

SA5295

Congratulations on your purchase  
and welcome to Philips!  
To fully benefit from the support that  
Philips offers, register your product at  
[www.philips.com/welcome](http://www.philips.com/welcome)

---

Digital audio video player

---

## Need help?

Please visit

[www.philips.com/welcome](http://www.philips.com/welcome)

where you can access a full set of supporting materials such as user manual, the latest software updates and answers to frequently asked questions.

# Contents

1	Important safety information	3
2	Your new player	8
2.1	What's in the box	8
2.2	Register your product	8
3	Getting started	9
3.1	Overview of controls and connections	9
3.2	Main menu	10
3.3	Install	10
3.4	Connect and charge	11
3.4.1	Use the supplied USB cable	11
3.4.2	Battery level indication	11
3.5	Transfer music and pictures	12
3.6	Transfer videos	12
3.7	Enjoy	13
3.7.1	Turn on and off	13
3.7.2	Navigate the menu	13
3.7.3	Lock slider	13
4	Organize and transfer music and pictures with Rhapsody Media Player	14
4.1	Install Rhapsody Media Player	14
4.1.1	View subscription status	14
4.2	Add your music to the player	15
4.3	Add Rhapsody Music* to the player	17
4.4	Add Rhapsody Music Channels* to the player	18
4.5	Transfer picture files to the player with Rhapsody Media Player	19
5	Detailed operation	20
5.1	Music mode	20
5.1.1	Control	20
5.1.2	Find your music	21
5.1.3	Find your Rhapsody Channels*	22
5.1.4	Adding music from your Rhapsody Channels* to the player library	22
5.1.5	Limit the volume	23
5.1.6	Resume play (Now playing)	23
5.2	Picture library	24
5.2.1	View pictures	24
5.2.2	Adding pictures to folder 'Favorites'	24
5.2.3	Slideshow	24

# Contents

5.3	Video	25
5.3.1	Transfer videos from a computer to the player	25
5.3.2	Video play	25
5.3.3	Fast forward / backward control	25
5.4	Radio	26
5.4.1	Automatic tuning of radio stations	26
5.4.2	RDS (Radio Data System)	26
5.4.3	Play a preset radio station	26
5.4.4	Manually tune a radio station	26
5.4.5	Manually save a radio station to a preset	27
5.4.6	Record from FM radio1 when the radio is playing	27
5.5	Recordings	28
5.5.1	Play recordings	28
5.5.2	Upload recordings to the computer	28
5.5.3	Delete recordings	29
5.6	Use your player to store and carry data files	29
6	Settings	30
6.1	Equalizer custom settings	31
7	Update your player	32
7.1	Perform a software update	32
8	Technical data	33
9	Frequently asked questions	35

# I Important safety information

## General maintenance

### To avoid damage or malfunction:

- Do not expose the player to excessive heat caused by heating equipment or direct sunlight.
- Do not drop your player or allow objects to fall on your player.
- Do not allow your player to be submerged in water. Do not expose headphone socket or battery compartment to water, as water entering the set may cause major damage.
- Do not use any cleaning agents containing alcohol, ammonia, benzene, or abrasives as these may harm the set.
- Active mobile phones in the vicinity may cause interference.
- Back up your files. Please ensure that you retain the original files you have downloaded to your device. Philips is not responsible for any loss of data if the product becomes damaged or not readable / legible.
- Manage (transfer, delete, etc.) your music files only with the supplied music software to avoid problems!

### About operating and storage temperatures

- Operate in a place where temperature is always between 0 and 35°C (32 to 95°F)
- Store in a place where temperature is always between -20 and 45°C (-4 to 113°F)
- Battery life may be shortened in low temperature conditions.

### Replacement parts/accessories

Visit [www.philips.com/support](http://www.philips.com/support) to order replacement parts/accessories.

## Hearing Safety

### Listen at a moderate volume.

- Using headphones at a high volume can impair your hearing. This product can produce sounds in decibel ranges that may cause hearing loss for a normal person, even for exposure less than a minute. The higher decibel ranges are offered for those that may have already experienced some hearing loss.
- Sound can be deceiving. Over time your hearing “comfort level” adapts to higher volumes of sound. So after prolonged listening, what sounds “normal” can actually be loud and harmful to your hearing. To guard against this, set your volume to a safe level before your hearing adapts and leave it there.



### To establish a safe volume level:

- Set your volume control at a low setting.
- Slowly increase the sound until you can hear it comfortably and clearly, without distortion.

### Listen for reasonable periods of time:

- Prolonged exposure to sound, even at normally “safe” levels, can also cause hearing loss.
- Be sure to use your equipment reasonably and take appropriate breaks.

## Be sure to observe the following guidelines when using your headphones.

- Listen at reasonable volumes for reasonable periods of time.
- Be careful not to adjust the volume as your hearing adapts.
- Do not turn up the volume so high that you can't hear what's around you.
- You should use caution or temporarily discontinue use in potentially hazardous situations.
- Do not use headphones while operating a motorized vehicle, cycling, skateboarding, etc.; it may create a traffic hazard and is illegal in many areas.

## Important (for models supplied with headphones):

Philips guarantees compliance with the maximum sound power of its audio players as determined by relevant regulatory bodies only with the original model of provided headphones. In case this one needs replacement, we recommend that you contact your retailer to order a model identical to that of the original, provided by Philips.

## Copyright information

All other brands and product names are trademarks of their respective companies or organizations.

Unauthorized duplication of any recordings whether downloaded from the Internet or made from audio CDs is a violation of copyright laws and international treaties.

The making of unauthorized copies of copy-protected material, including computer programmes, files, broadcasts and sound recordings, may be an infringement of copyrights and constitute a criminal offence. This equipment should not be used for such purposes.

This product is protected by certain intellectual property rights of Microsoft Corporation. Use or distribution of such technology outside of this product is prohibited without a license from Microsoft or an authorized Microsoft subsidiary.

Content providers are using the digital rights management technology for Windows Media contained in this device ("WM-DRM") to protect the integrity of their content ("Secure Content") so that their intellectual property, including copyright, in such content is not misappropriated. This device uses WM-DRM software to play Secure Content ("WM-DRM Software"). If the security of the WM-DRM Software in this device has been compromised, Microsoft may revoke (either on its own or upon the request of the owners of Secure Content ("Secure Content Owners")) the WM-DRM Software's right to acquire new licenses to copy, display and/or play Secure Content. Revocation may also prevent your device's ability to transfer, store, copy, display and/or play Secure Content which you have previously stored on your Device. Revocation does not alter the WM-DRM Software's ability to play unprotected content. A list of revoked WM-DRM Software is sent to your device whenever you download a license for Secure Content from the Internet or from a PC. Microsoft may, in conjunction with such license, also download revocation lists onto your device on behalf of Secure Content Owners, which may disable your device's ability to copy, display and/or play Secure Content.

In the event of revocation, Philips will attempt to make available software updates to restore some or all of your device's ability to transfer, store, access, copy, display and/or play Secure Content. However, the ability to make such updates available does not rest solely with Philips. Philips does not guarantee that, after revocation, such software updates will be available. If such updates are not available, your device will not have the ability to transfer, store, copy, display and/or play Secure Content - even Secure Content which you have previously stored on your device.

In addition, even if such software updates are available, they may not enable your Device to transfer, store, copy, display, and/or play Secure Content which was previously stored on your Device. In some cases you may be able to transfer the content from the PC. In other cases, you may have to repurchase previously obtained Secure Content.

To summarize - Microsoft, Secure Content Owners, and Secure Content distributors may deny you access, or restrict your access, to Secure Content. They may also disable your device's ability to transfer, store, copy, display and/or play Secure Content even after you have paid for and obtained it. Neither your consent nor the consent or approval of Philips is necessary for any of them to deny, withhold or otherwise restrict your access to Secure Content or to disable your device's ability to transfer, store, access, copy, display, and/or play Secure Content. Philips does not guaranty that you will be able to transfer, store, access, copy, display, and/or play Secure Content.

The Windows Media and the Windows logo are registered trademarks of Microsoft Corporation in the United States and/or other countries.

## Be Responsible! Respect Copyrights.



Philips respects the intellectual property of others, and we ask our users to do the same.

Multimedia content on the internet may have been created and/or distributed without the original copyright owner's authorization.

Copying or distributing unauthorized content may violate copyright laws in various countries including yours.

Compliance with copyright laws remains your responsibility.

The recording and transfer to the portable player of video streams downloaded to your computer is intended only for use with public domain or properly licensed content. You may only use such content for your private, non-commercial use and shall respect eventual copyright instructions provided by the copyright owner of the work. Such instruction may state that no further copies shall be made. Video streams may include copy protection technology that prohibits further copying. For such situations the recording function will not work and you will be notified with a message.

## Data logging

Philips is committed to improving the quality of your product and enhancing the Philips user experience. To understand the usage profile of this device, this device logs some info / data to the non-volatile memory region of the device. These data are used to identify and detect any failures or problems you as a user may experience while using the device. The data stored, for example, will be the duration of playback in music mode, duration of playback in turner mode, how many times battery low was encountered, etc. The data stored do not reveal the content or media used on the device or the source of downloads. The data stored on the device are retrieved and used **ONLY** if the user returns the device to the Philips service centre and **ONLY** to simplify error detection and prevention. The data stored shall be made available to user on user's first request.

## Disposal of your old product



Your product is designed and manufactured with high quality materials and components, which can be recycled and reused.

When this crossed-out wheeled bin symbol is attached to a product, it means the product is covered by the European Directive 2002/96/EC.

Please be informed about the local separate collection system for electrical and electronic products.

Please act according to your local rules and do not dispose of your old product with your normal household waste. The correct disposal of your old product will help prevent potential negative consequences to the environment and human health.

The build-in rechargeable battery contains substances that may pollute the environment. Always hand the appliance in at an official collection point to remove the battery before discarding the appliance. Battery should be disposed of at an official collection point.

## Modifications

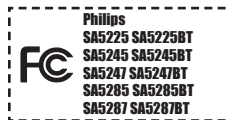
Modifications not authorized by the manufacturer may void user authority to operate this device.



## Notice for USA

### Note:

This equipment has been tested and found to comply with the limits for a Class B digital device, pursuant to part 15 of the FCC Rules. These limits are designed to provide reasonable protection against harmful interference in a residential installation. This equipment generates, uses, and can radiate radio frequency energy and, if not installed and used in accordance with the instruction manual, may cause harmful interference to radio communications.



However, there is no guarantee that interference will not occur in a particular installation. If this equipment does cause harmful interference to radio or television reception, which can be determined by turning the equipment off and on, the user is encouraged to try to correct the interference by one or more of the following measures:

- Relocate the receiving antenna.
- Increase the separation between equipment and receiver.
- Connect the equipment into an outlet on a circuit different from that to which the receiver is connected.
- Consult the dealer or an experienced radio/TV technician for help.

## Notice for Canada

This Class B digital apparatus complies with Canadian ICES-003.

The set complies with the FCC-Rules, Part 15 and with 21 CFR 1040.10. Operation is subject to the following two conditions:

- This device may not cause harmful interference, and
- This device must accept any interference received, including interference that may cause undesired operation.

## Notice for the European Union

This product complies with the radio interference requirements of the European Union.

## 2 Your new player

With your newly purchased player, you can enjoy the following:

- Play video files (WMV, MPEG4 (.avi))
- Play audio files (MP3, WMA, AAC (unprotected))
- Display album art
- View pictures
- Listen to FM radio
- Record FM radio<sup>1</sup> and voices / sounds
- View folders

### 2.1 What's in the box

The following accessories are included with your player:



Player



Earphones with  
exchangeable caps



USB cable



Protective  
pouch



Quick start guide



CD-ROM containing Rhapsody Media Player, Philips Device Manager, Media Converter for Philips, User Manual and Frequently Asked Questions

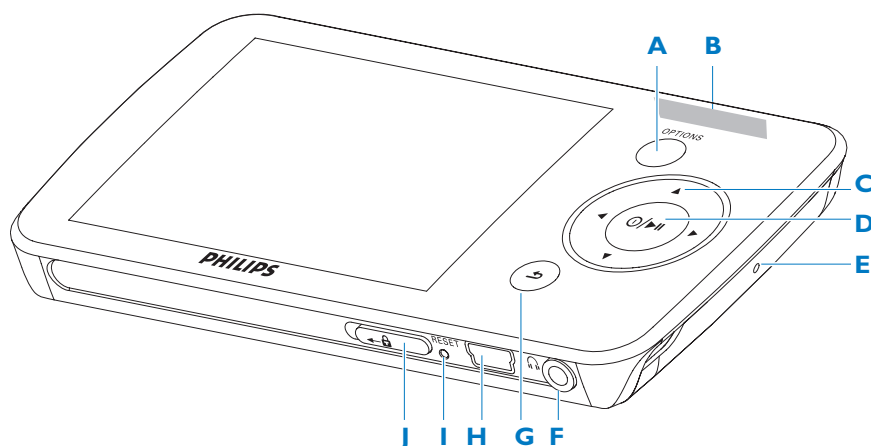
### 2.2 Register your product

We strongly recommend that you register your product in order to gain access to free updates. To register your product, please log on to [www.philips.com/welcome](http://www.philips.com/welcome) so that we can inform you as soon as new updates become available.

<sup>1</sup> FM radio recording: This feature is available for all regions except USA and Canada.









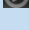
# 3 Getting started

## 3.1 Overview of controls and connections



<b>A</b>	<b>OPTIONS</b>	Offers a selection of options, depending on the current menu
<b>B</b>	<b>-VOLUME+</b>	Increases/decreases volume (hold to increase/decreases fast)
<b>C</b>		Skips back (hold to quick skip)
		Skips forward (hold to quick skip)
		Scrolls up/down (hold to quick scroll)
<b>D</b>		On / Off Play/Record / Pause Confirm selection
<b>E</b>	<b>MIC</b>	Microphone
<b>F</b>		Headphones jack
<b>G</b>		Back one level (hold to return to root menu)
<b>H</b>		USB connector
<b>I</b>	<b>RESET</b>	
<b>J</b>	<b>slider</b>	Hold slider to lock/unlock all keys (except <b>-VOLUME+</b> )

## 3.2 Main menu

Menu	To
 Music	Play digital music tracks
 Rhapsody Channels*	Listen to Rhapsody Music Channels
 Video	Watch videos
 Pictures	View pictures
 Radio	Listen to or record from FM radio <sup>1</sup>
 Recording	Create or listen to recordings
 Folders <sup>1</sup>	View folders
 Settings	Customize the settings of your player
 Now playing	Go to the play screen
 Last played	Resume play


\* Rhapsody Music Channels are 'virtual' radio stations and are only available after active Rhapsody Music Channel content is transferred to the player.

## 3.3 Install

 **Important** Make sure to install the software provided in the supplied CD for music and video transfer.

System requirements:

- Windows XP (SP2 or above) or Vista
- Pentium III 800MHz processor or higher
- 128MB RAM
- 500MB hard disk space
- Internet connection
- Microsoft Internet Explorer 6.0 or later
- CD-ROM
- USB port

 **Important** You need **Windows XP Service Pack 2** to install and run this software. In case you do not have this on your PC, you will be asked to install the Service Pack. Please do install this, complete the rest of your software installation and only then connect your device. This is critical to ensure the proper working of your player when connected to the PC.

- 1 Insert the CD supplied with your product into the CD ROM drive of your PC.
- 2 Follow the on-screen instructions to complete the installation of **Rhapsody Media Player**, **Philips Device Manager** and **Media Converter for Philips**. The Media Converter for Philips converts video clips and JPEG pictures into suitable formats for the player.
- 3 If the installation program does not start automatically, browse the CD contents with **Windows Explorer** and double click on the file ending with .exe.

Lost your CD? Don't worry, you can download the CD contents from [www.philips.com/support](http://www.philips.com/support).

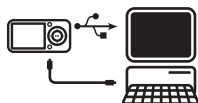
<sup>1</sup> FM radio recording: This feature is available for all regions except USA and Canada.

## 3.4 Connect and charge



When you connect the player to the PC, it automatically charges.

### 3.4.1 Use the supplied USB cable

- 1 Before you use the player for the first time, charge it for at least 5 hours.
  - > The battery<sup>2</sup> has a 100% charge after 4 hours and an 80% charge after 2 hours.



- 2 Connect the supplied USB cable to the mini USB port at the bottom of the player, the other end to your PC.
  - > The player will start to charge as soon as it is connected to your PC.

 **Note** The player is fully charged when the charging animation stops and  is displayed. Your fully charged player will allow up to 30 hours<sup>2</sup> of music playback.

### 3.4.2 Battery level indication

The approximate power levels of your battery are indicated as follows:



Full



Two-thirds full





Half full



Low



Empty

 **Note** When the batteries are almost empty, the battery screen  blinks. The player saves all settings and unfinished recordings and switches off in less than 60 seconds.

<sup>2</sup> Rechargeable batteries have a limited number of charge cycles. Battery life and number of charge cycles vary by use and settings.


## 3.6.1 Download or add videos to MediaConverter™

### 3.6.1.1 Download videos with Stream Ripper\*

- 1 Use the **Internet Explorer** to open the website from where you want to download the video.

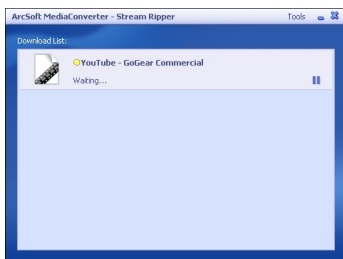
The Stream Ripper software supports downloads from the following websites:

- video.google.com
- myspace.com
- youtube.com

- 2 While playing the video on the website, move your mouse cursor over the video until you see the Stream Ripper icon  **Download** in the top left hand side corner; then click **Download**.



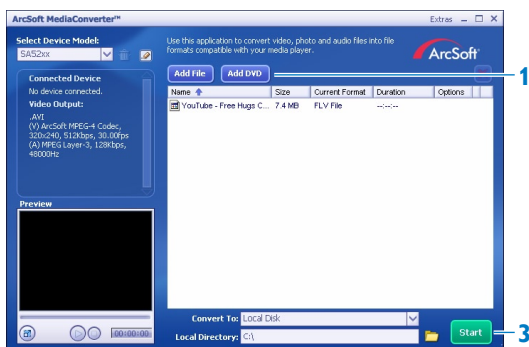
- > When the video is downloaded the MediaConverter™ opens and shows the downloaded video.



\* The **Stream Ripper** download feature requires that the **FLV codec** is installed on your PC. For more information read chapter **Install** in this user manual.

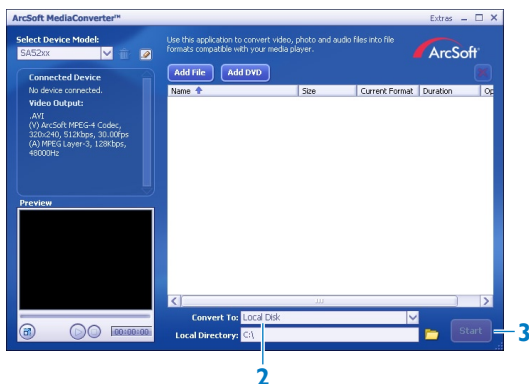
### 3.6.1.2 Add video files from your PC or DVD

- 1 In the **MediaConverter™** window, click **Add File** / **Add DVD** to select the source of your video.
- 2 In the **pop-up window**, mark your video file, then click **Open**.
- 3 In the **MediaConverter™** window, click **Start** to start the conversion and transfer of the video.

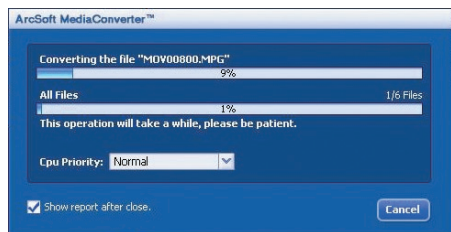


### 3.6.2 Convert and transfer videos with MediaConverter™

- 1 Follow section 3.6.1.1 or 3.6.1.2 to download or add a video.
- 2 In the **MediaConverter™** window, select the destination for the video (your Philips player or local disk).
- 3 In the **MediaConverter™** window, click **Start** to start the conversion and transfer of the video.



- > The progress of conversion and transfer is shown.  
All the converted files will be transferred to the player.



✱ **Tip** You can also select the files in **Windows Explorer** and then drag and drop them into the **MediaConverter™ for Philips** screen.

☰ **Note** If needed, the files will first be converted to a format that can be played on the player.

## 3.7 Enjoy

### 3.7.1 Turn on and off

To turn on, press **⏵/▶** until the display shows the Philips logo.

To turn off, press and hold **⏵/▶** until the display shows 'Bye'.

✱ **Tip** If the player is in stop mode and no button is pressed for 10 minutes, it switches off automatically.

### 3.7.2 Navigate the menu

Your player has an intuitive menu navigation system to guide you through various settings and operations.

Goal	Action
Return to previous menu	Press <b>⏮</b>
Return to main menu	Press and hold <b>⏮</b>
Browse through menus	Press <b>▶</b> or <b>⏮</b>
Scroll through a list	Press <b>▲</b> or <b>▼</b>
Select an option	Press <b>▶</b>

### 3.7.3 Lock slider

The player has a lock switch to prevent any accidental operation.

- 1 To lock the buttons when you play, move the lock slider to position **🔒**.

> All buttons except **-VOL+** are locked and the display shows **🔒**.

- 2 To unlock the buttons again, move the lock slider to position **🔓**







## 4 Organize and transfer music and pictures with Rhapsody Media Player

### 4.1 Install Rhapsody Media Player

Install the Rhapsody Media Player from the supplied software CD. (See section **3.3 Install** for more details).

#### 4.1.1 View subscription status

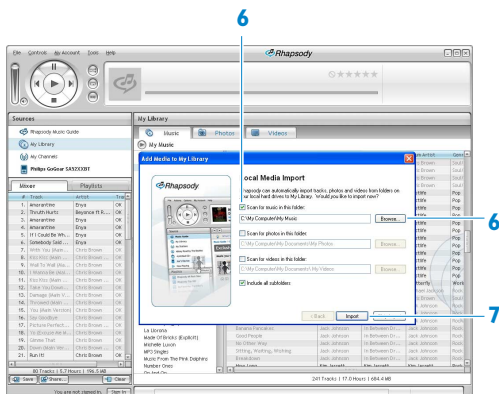
You can view your Rhapsody subscription status at the top of the display, next to the battery level indicator:

-  Currently licensed Rhapsody account
-  Rhapsody account subscription expires in 7 days
-  Rhapsody account subscription expires in 2 days
-  No Rhapsody account subscription (or subscription is invalid / expired)

 **Tip** You can check the status of your Rhapsody account in the Settings menu of your player, or visit the Internet at [www.Rhapsody.com](http://www.Rhapsody.com).



- 6 In the pop-up window, check the box next to **Scan for music in this folder:**.



> By default, the pop-up window shows the music in the **My Music** folder on your computer.

Click **Browse...** to find the folder with your music, if it is different from the pre-selected folder.

- 7 Click **Import**.

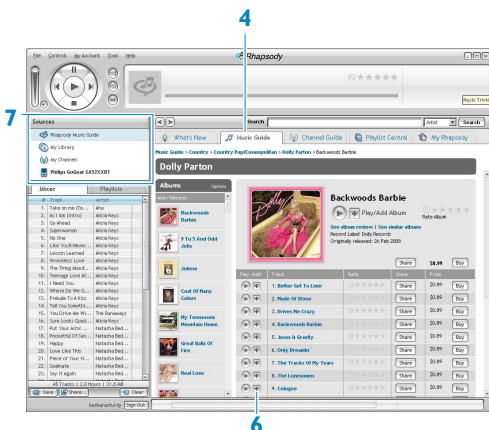
> All music in the selected folder is imported into **My Library**.

- 8 To transfer the music files to your player, drag and drop the files from the main window to the player icon in the **Sources** window.

## 4.3 Add Rhapsody Music\* to the player

Depending on the type of Rhapsody account you hold, you can add Rhapsody Music to the player using. For more information visit [www.Rhapsody.com](http://www.Rhapsody.com).

- 1 Ensure the computer is connected to the Internet.
- 2 Connect the player to the computer.
- 3 Launch the **Rhapsody Media Player**.



- 4 In the main window, select the tab **Music Guide**.
- 5 In the main window, select an album and song title.
- 6 In the main window, click the **+** icon to add the title to **My Library**.
- 7 In the **Sources** window, select **My Library**.
- 8 From the main window, drag and drop your music to the player icon in the **Sources** window.

\* This feature is available only for music that you purchased through Rhapsody.

## 4.4 Add Rhapsody Music Channels\* to the player

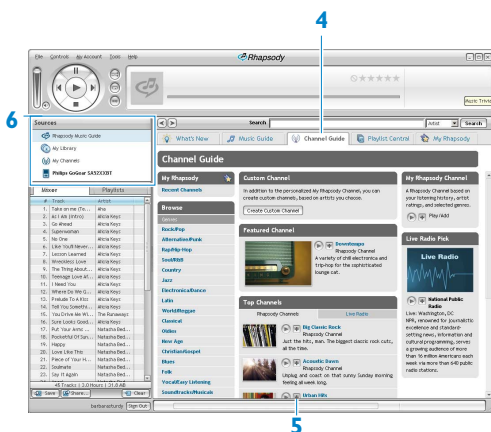
Depending on the type of Rhapsody account you hold, you can add Rhapsody Music Channels to the player using. For more information visit [www.Rhapsody.com](http://www.Rhapsody.com)

1 Ensure the computer is connected to the Internet.

2 Connect the player to the computer.

3 Launch the **Rhapsody Media Player**.

> The player is shown in the **Sources** window on the left hand side of the screen.



4 In the main window, select the tab **Channel Guide**.

5 In the main window, click on the **+** icon to add a channel to **My Channels**.

6 In the **Sources** window, select **My Channels**.

> The main window shows a list of your channels.

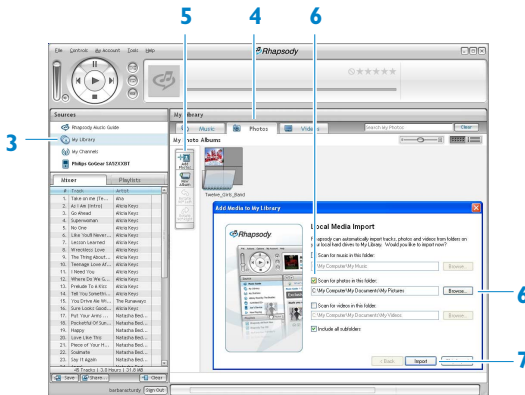
7 Drag and drop your channels to the player icon in the **Sources** window.

\* This feature is available only if you subscribe to Rhapsody Music Channels.

## 4.5 Transfer picture files to the player with Rhapsody Media Player

You can transfer picture files to your player using Rhapsody Media Player.

- 1 Connect the player to the computer.
- 2 Launch the **Rhapsody Media Player**.
  - > The player is shown in the **Sources** window on the left hand side of the screen.



- 3 In the **Sources** window, select **My Library**.
  - 4 In the main window, click on a tab to select **Photos**.
  - 5 To add pictures from a different folder on your computer, click on the **Add Photos** icon.
  - 6 In the **Add Media to My Library** pop-up window, check the box next to **Scan for photos in this folder**.
    - > By default, the pop-up window shows the pictures in the **My Pictures** folder on your computer.
- Click **Browse...** to find the folder with your pictures, if it is different from the pre-selected folder.
- 7 Click **Import**, to import the selected folder to My Library.
  - 8 To transfer the picture files to your player, drag and drop the files from the main window to the player icon in the **Sources** window.

# 5 Detailed operation

## 5.1 Music mode (also play mode for recordings)

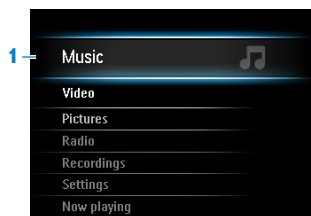
Your player supports MP3, WMA, and AAC (unprotected) formats.

### 5.1.1 Control

The player offers the following music mode options:

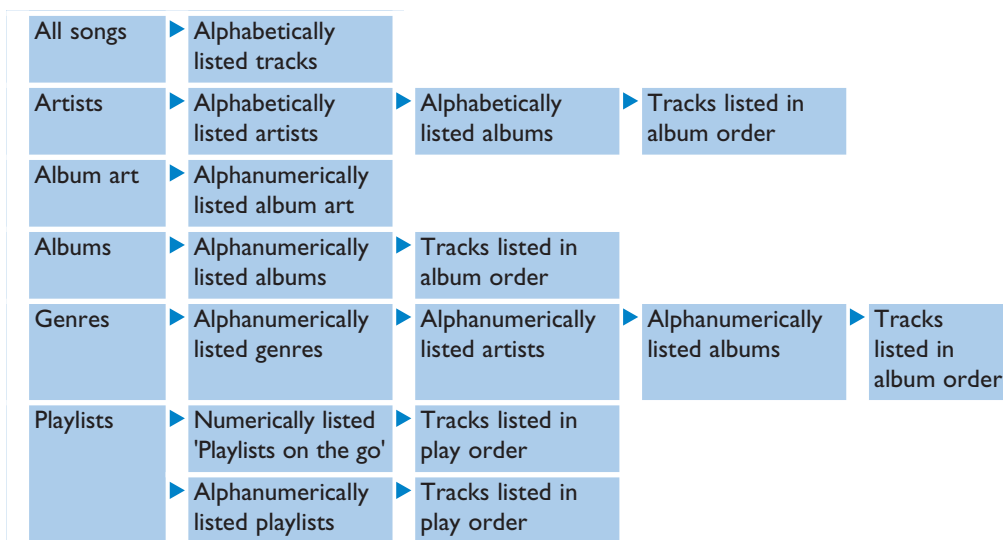
Goal	Action
Play / Pause music	Press ►
Skip to next audio file	Press ►
Return to previous audio file	Press ◀
Fast forward	Press and hold ►
Fast rewind	Press and hold ◀
Return to browsing menu	Long/short press ↶
Increase volume	Press VOL +
Decrease volume	Press VOL -
Access options menu	Press OPTIONS

## 5.1.2 Find your music



- 1 From the main menu, select  to enter music mode.


The player offers the following menu options:

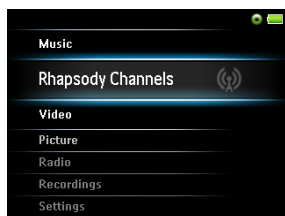



- 2 Press ▲ or ▼ to scroll through the list.
- 3 Press ▶|| to select or press ↶ to return to previous level.
- 4 Press ▶|| to play.



### 5.1.3 Find your Rhapsody Channels\*

When you transfer Rhapsody Channels to the player, the Rhapsody Channels icon  appears in the home menu.



- 1 From the main menu, select  to enter **Rhapsody Channels**.
- 2 Press ▲ or ▼ to scroll through the list of items that are available to you.
- 3 Press ► to select or press ↶ to return to previous level.
- 4 Press ►|| to play.

### 5.1.4 Adding music from your Rhapsody Channels\* to the player library

You can add music from your Rhapsody Channels to the library of your player. Adding the music to the library of your player enables you to search for a specific song.

- 1 While playing music from your Rhapsody channel, press **OPTIONS** to see the options menu.
- 2 Press ▲ or ▼, then ►|| to select **Add to Library**.
  - > The currently playing music is added to the player library.

\* Rhapsody Channels is available only if you hold an active Rhapsody account. (See also section **Organize and transfer music and pictures using Rhapsody Media Player** in this user manual for more information.)

## 5.1.5 Limit the volume

Listening to loud sounds for longer than a moment can be harmful to the listener. You can set the volume level of the player to suit your preferences:

- 1 From the main menu, select **Settings** > **Sound settings** > **Volume limit**.
- 2 Press **-VOLUME+** to adjust the level.
- 3 Press **▶||** to set.



- > When you set a volume limit, you can no longer exceed the set volume, even if you press the **VOLUME+** button.

To enable maximum volume again, set the volume limit back to maximum

## 5.1.6 Resume play (Now playing)

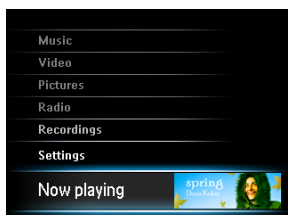
While playing, when you navigate away from the play screen, you can return to the play screen anytime.

**In any menu except the main menu:**

- 1 Press **OPTIONS**.
- 2 Press **▲** or **▼**, then **▶||** to select **Now playing** [current track name].

**In the main menu:**

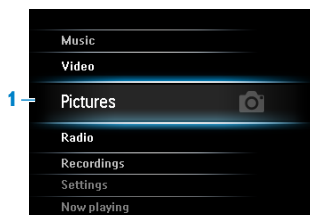
- 1 Press **▲** or **▼**, then **▶||** to select **Now playing**.









## 5.2 Picture library

### 5.2.1 View pictures




The player supports pictures in JPEG format and provides a slide show function.



- 1 From the main menu, select  to enter Picture mode.
- 2 Press  or  to browse through picture thumbnails.
- 3 Press  to see the picture in full view.
- 4 During full screen browsing, press  or  to move to next or previous picture.

### 5.2.2 Adding pictures to folder 'Favorites'





The **Favorites** feature enables you to share your favorite pictures more quickly. This is a useful feature when you have many picture files.

- 1 While viewing a picture, press **OPTIONS** to see the options menu.
- 2 Press  or , then  to select **Add to Favorites**.
  - > The currently displayed picture is added to the folder Favorites.



### 5.2.3 Slideshow

A slideshow displays all pictures within the album in full view. It moves to the next picture at a specified interval.

- 1 To start a slideshow in thumbnails or full screen browse mode, press **OPTIONS** to see the options menu.
- 2 Press  or , then  to select **Start Slideshow**.
- 3 To cancel the slideshow, press .

## 5.3 Video

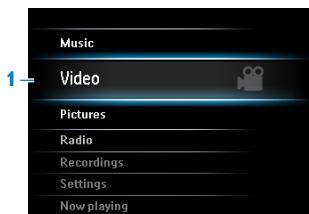
### 5.3.1 Transfer videos from a computer to the player


Please see section **3.6 Transfer videos** in this user manual.

 **Note** Videos that you have transferred through Rhapsody are available for play only in the Rhapsody library.

### 5.3.2 Video play

You can play video clips that are stored on the player.



- 1 From the main menu, select  to enter Video mode.
  - > A list of video files stored on the player is displayed.
- 2 Press ▲ or ▼ to select the file and press ►|| to play.
- 3 Short press ↶ to go back to the previous menu, and long press ↷ to return to the main menu.

### 5.3.3 Fast forward / backward control

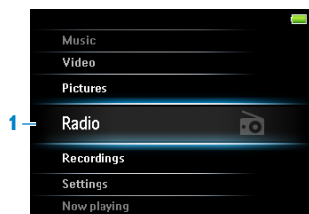
The player enables you to scan videos in fast forward / backward mode.

#### Fast forward / backward

- 1 Long press ► to select 4x normal speed.
  - > Press ►|| anytime to resume normal speed play.
- 2 While in 4x normal speed mode, press ► to cycle through the following speed options: 8x normal speed > 16x normal speed > 4x normal speed...

## 5.4 Radio

From the main menu, select  to enter radio mode.



### Connect the headphones

The supplied headphones serve as a radio antenna. Ensure you connect the headphones properly for an optimal reception.

### 5.4.1 Automatic tuning of radio stations



#### Note

The Autotune function saves the frequencies of found radio stations under presets and overwrites existing presets.

When there are no frequencies saved under presets, the radio feature prompts you to start Autotune.

### Start a new Autotune session

- 1 While in radio mode, press **OPTIONS** to see the options menu.
- 2 Press **▲** or **▼** to select the Autotune, then **▶||** to start.
  - > The frequencies of found radio stations are saved to presets.  
The radio can store up to 20 radio stations to presets.

### 5.4.2 RDS (Radio Data System)

The player supports the RDS feature of FM radio stations. RDS stations can send additional information along with the FM radio signal, such as channel information.

### 5.4.3 Play a preset radio station

- 1 While in radio mode, press **OPTIONS** to see the options menu.
- 2 Press **▲** or **▼** to select the **Select radio preset**, then **▶||** to begin play.
- 3 Press **◀/▶** to change to another preset.

### 5.4.4 Manually tune a radio station

- 1 While in radio mode, press **▲** or **▼** to manually tune to a radio station:
  - > To fine tune frequency, quick press **▲/▼**.  
To search for the next stronger signal, long press **▲/▼**.

## 5.4.5 Manually save a radio station to a preset

- 1 While playing a radio station, press **OPTIONS** to see the options menu.
- 2 Press ▲ or ▼ to select the **Save to preset**, then ► to save.



## 5.4.6 Record from FM radio<sup>1</sup> when the radio is playing








- 1 While in radio mode, press **OPTIONS** to see the options menu.
- 2 Press ▲ or ▼ to select the **Start radio recording**, then ► to start.
- 3 Press ► to pause.
- 4 Press ↶ to stop and save the recording.  
> Your recordings are saved in the **Recordings library** on the player.
- 5 You can find your radio recordings files under **U** > **Recordings Library** > **Radio recordings**.

<sup>1</sup> FM radio recording: This feature is available for all regions except USA and Canada.

## 5.5 Recordings





You can record audio with the player. The section **Overview of controls and connections** shows you the location of the microphone.



- 1 From the main menu, select .
- 2 Press  or  to select the **Start voice recording**, then  to start.
- 3 Press  to pause.
- 4 Press  to stop and save the recording.  
> Your recordings are saved in the **Recordings library** on the player.
- 5 You can find the voice recordings file under  > **Recordings Library** > **Voice recordings**.

 **Note** To record FM radio<sup>1</sup>, see section **5.5 Radio**.

### 5.5.1 Play recordings

- 1 From the main menu, select  > **Recordings Library** > **Voice recordings** or **Radio recordings**<sup>1</sup>.
- 2 Press  or  to select the recording you want to hear.
- 3 Press  to play.


### 5.5.2 Upload recordings to the computer

- 1 Connect the player to your computer.
- 2 Select the player in **Windows Explorer**.
- 3 Select **Recordings** > **Voice** or **FM radio**<sup>1</sup>.
- 4 Copy and paste the recordings to any desired location on the computer.

<sup>1</sup> FM radio recording: This feature is available for all regions except USA and Canada.

### 5.5.3 Delete recordings

You can delete one or all of the recordings.

- 1 From the main menu, select  > **Recordings Library** > **Voice recordings** or **Radio recordings**<sup>1</sup>.
- 2 Press ▲ or ▼ to select the recording you want to delete.
- 3 Press **OPTIONS** to see the options menu.
- 4 Press ▲ or ▼ to select **Delete** or **Delete all**.
- 5 Press ►|| to confirm.

## 5.6 Use your player to store and carry data files

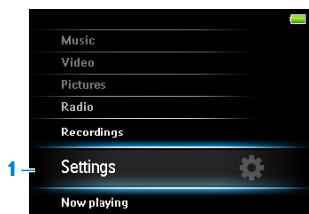
You can use your player to store and carry data files by copying data files into your player with **Windows Explorer**.









<sup>1</sup> FM radio recording: This feature is available for all regions except USA and Canada.



## 6 Settings

You can set preferences in your player to suit your needs.



- 1 Press  and select .
- 2 Press  or  to select an option.
- 3 Press  to go to next level or  to return to previous level.
- 4 Press  to confirm your selection.
- 5 Press  to exit the **Settings** menu















In the Settings menu, the following options are available:

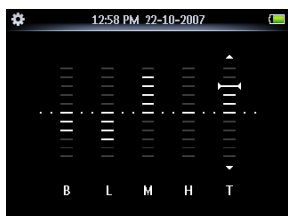
Settings	Options	Further Options
Play mode	Shuffle all	On / Off
	Repeat	Off / Repeat 1 / Repeat all
Sound settings	Volume limit	Off / Set
	FullSound	On / Off
	Equalizer	Off / Rock / Pop / Jazz / Classical / Dance / Electronica / Lounge / RnB / Hip Hop / Spoken Word / Custom
Backlight	Always on / 10 seconds / 30 seconds / 60 seconds	
Brightness	slider (5 stages)	
Sleep timer	Off / 15 minutes / 30 minutes / 60 minutes	
Language	English (default) / French / German / Spanish / Italian / (Br) Portuguese / Portuguese (European) / Dutch / Swedish / Norwegian / Finnish / Hungarian / Polish / Chinese Simplified / Chinese Traditional / Japanese / Korean / Thai (for version /97 only) / Turkish	
Rhapsody	Rhapsody Account Information	
Screensaver	Off / Clock / Demo	

Settings	Options	Further Options
Time and Date	Time Settings	Set time format 12 hrs / 24 hrs
		Set time Hour / Minute / AM/PM
	Date Settings	Set date format dd/mm/yyyy / mm/dd/yyyy
		Set date Day / Month / Year
	Display in Header	Off / On
Skins	Dark / Light / Red	
Factory settings	Restore factory settings?	Confirmation feedback
	Yes / No	
Information	Memory	Capacity / Available free space
	Firmware version	
	Support website	

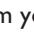


## 6.1 Equalizer custom settings

You can customize the equalizer settings:

- 1 From the main menu, select .
- 2 Press  or , then  to select **Sound settings**.
- 3 Press  or , then  to select **Equalizer**.
- 4 Press  or , then  to select **Custom**.
- 5 Press  or  to select equalizer band:  
**B** = bass, **L** = low, **M** = mid, **H** = high, **T** = treble
- 6 Press  or  to adjust level.



> Bar indicator shows current level.

- 7 Press  to confirm your selection.  
> Press  to cancel the adjustments.
- 8 Press  to exit the **Settings** menu.

# 7 Update your player

Your player is controlled by an internal program called the firmware. Newer versions of the firmware may have been released after you have purchased your player.

A software program called **Philips Device Manager** checks for firmware updates that are available on the Internet.

Install **Philips Device Manager** from the supplied CD or download the latest version from [www.philips.com/support](http://www.philips.com/support).

## 7.1 Perform a software update

**! Attention** This procedure will erase the content of the player.

- 1 Copy the content of the player to the computer as a back-up.
- 2 Disconnect the player from the computer.
- 3 Turn off your player.
- 4 Ensure the computer is connected to the Internet.
- 5 Click **Start > Programs > Philips Digital Audio Player > SA52XX > Philips SA52XX Device Manager** to launch the **Philips Device Manager**.



- 6 On the player, hold the volume "+" button while you connect the player to the computer.
  - > *The Device Manager enters recovery mode.*
- 7 Click **OK** to continue.
- 8 When the display indicates that the process is finished, disconnect the player from the computer.
  - > *The display shows **Updating firmware**.*
- 9 Wait until the update process is completed on the player.
  - > *The player restarts and is ready for use again.*
- 10 Reconnect the player to the computer.
- 11 Transfer the back-up content to the player.

# 8 Technical data

## Power

- Power supply  
880mAh Li-polymer internal rechargeable battery<sup>2</sup>

## Display

- White backlight LCD, 320 x 240 pixels, 262K colors

## Sound

- Channel separation: 45dB
- Equalizer setting:  
Off / FullSound / Rock / Pop / Jazz /  
Classical / Dance / Electronica / Lounge /  
RnB / Hip Hop / Spoken Word / Custom
- Frequency response: 20-18000Hz
- Signal to noise ratio: > 84dB
- Output Power (RMS): 2x2.4mW

## Audio playback

- Compression format: MP3 (8-320kps and VBR, Sample rates: 8, 11.025, 16, 22.050, 24, 32, 44.1, 48kHz), WMA (5-192kbps, Sample rates: 8, 11.025, 16, 22.050, 24, 32, 44.1, 48kHz)
- Play time: 30 hours<sup>2</sup>
- ID3-tag support

## Video playback

- MPEG4 SP: Up to 640kbps in avi format, 320 x 240 pixels, 30fps (other formats to be supported by provided Media Converter for Philips)
- WMV9: Up to 512kbps, 320 x 240 pixels, 30fps (other formats to be supported by provided Media Converter for Philips)
- Play time: 6 hours<sup>2</sup>

## Media Converter for Philips

- Support format:  
AVI, WMV (requires WMP10 or above),  
MOV (requires Quicktime), RM (requires RealPlayer)

## Recording

- Audio Capturing: Build-in microphone (Mono)
- FM radio<sup>1</sup>

## Storage media

- Built-in memory capacity:  
SA522x 2GB NAND Flash<sup>3</sup>  
SA524x 4GB NAND Flash<sup>3</sup>  
SA528x 8GB NAND Flash<sup>3</sup>

## Connectivity

- Headphone 3.5mm, USB 2.0<sup>4</sup>

## Music and picture transfer

- Via Rhapsody

## Video transfer

- Via Media Converter for Philips

## Data transfer

- Via Windows Explorer

## System requirements


- Windows® XP (SP2 or above), Vista
- Pentium III 800MHz processor or higher
- 128MB RAM
- 500MB hard disk space
- Internet connection
- Microsoft Internet Explorer 6.0 or later
- Video display card
- Sound card
- CD-ROM
- USB port

- <sup>1</sup> *FM radio recording: This feature is available for all regions except USA and Canada.*
- <sup>2</sup> *Rechargeable batteries have a limited number of charge cycles. Battery life and number of charge cycles vary by use and settings.*
- <sup>3</sup> *1MB = 1 million bytes; available storage capacity will be less.  
1GB = 1 billion bytes; available storage capacity will be less.  
Full memory capacity may not be available as some memory will be reserved for the player.  
Storage capacity based on 4 minutes per song and 64kbps WMA encoding.*
- <sup>4</sup> *Actual transfer speed may vary based on your operating system and software configuration.*

## 9 Frequently asked questions

If you encounter problems with your player, go through the following points listed in the next section. Please also check out FAQs at [www.philips.com/support](http://www.philips.com/support) for further help and other troubleshooting tips.

Consult your dealer or service center if you are unable to find a solution by following these hints.

 **Warning** Under no circumstances should you try to repair the set yourself, as this will invalidate the warranty.

### My player cannot power on.

- You may have failed to press and hold ►|| long enough. Press and hold ►|| until the Philips welcome screen appears on display.
- Your device battery may be out of power due to long period of non-usage. Please charge your player.

**If none of the above works, then you may have to use the Device Manager to recover your player:**

- 1 Launch the **Philips Device Manager** at **Start > Programs > Philips Digital Audio Player > SA52XX > Philips SA52XX Device Manager** on your PC.
- 2 Press and hold the **VOL+** button while your player is connecting to the PC.
- 3 Keep holding the key until the **Philips Device Manager** acknowledges your player and goes into recovery mode.
- 4 Click the **repair** button and follow the instructions given by the **Device Manager**.
- 5 After the player has been repaired, disconnect it from your PC and re-start.

### There is no music on my player after transfer.

**Are your songs in MP3, AAC or WMA format?**

Other formats will not playback on the player.

### There is no picture on my player after transfer.

**Are your pictures in JPEG, BMP or GIF format?**

Pictures in other formats cannot be transferred to your player.

### There is no video on my player after transfer.

Make sure you use Media Converter for Philips (provided in the CD-ROM) to convert the video clips into the readable format to the player.

## My player hangs.

- 1 In the unlikely event that your player hangs, do not panic. Insert a small pin or other sharp object into the reset hole located at the bottom of the player. Hold until the player shuts down.



**Note** The existing contents on your player will not be erased.

- 2 If nothing happens, recharge the battery for at least 4 hours and try to power on or reset again. If this does not work, you might have to repair your player with **Philips Device Manager**.

## There is no sound.

Make sure your headphones are inserted all the way into the headphones jack.

## Some songs do not show up or playback on the player.

The audio file might be corrupted, try to playback the file on your PC first. If it does not play, rip the song again.

PHILIPS reserves the right to make design and specification changes for product improvement without prior notice.





Be responsible  
Respect copyrights

Specifications are subject to change without notice.  
Trademarks are the property of Koninklijke Philips  
Electronics N.V. or their respective owners  
© 2008 Koninklijke Philips Electronics N.V.  
All rights reserved.  
[www.philips.com](http://www.philips.com)

CE 1588



Printed in China  
wk8201