

Product datasheet

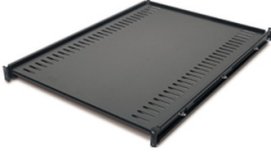
Specifications



Fixed Shelf - 250lbs/114kg, Black

AR8122BLK

EAN Code: 0731304107842



Overview

Presentation Fixed shelf to enable the mounting of tower units, monitors, and other equipment into the rack environment.

Main

Product or component type	Shelf
Number of rack unit	1U
Number of cables	1
Provided equipment	Installation guide Mounting hardware

Physical

Colour	Black
Height	44 mm
Width	470 mm
Depth	660 mm
Product weight	8.18 kg
Mounting location	Front
Mounting preference	No preference
Mounting mode	Rack-mounted
Maximum mounting depth	825.5 mm
Minimum mounting depth	673.1 mm
Permanent permissible load	113.4 kg static

Conformance

Standards	EIA-310D
-----------	----------

Packing Units

Unit Type of Package 1	PCE
Number of Units in Package 1	1
Package 1 Height	77.5 cm
Package 1 Width	57.6 cm
Package 1 Length	8.9 cm
Package 1 Weight	10.438 kg

Logistical informations

Country of origin CN

Contractual warranty

Warranty (in months) 24



Environmental Data

Schneider Electric aims to achieve Net Zero status by 2050 through supply chain partnerships, lower impact materials, and circularity via our ongoing “Use Better, Use Longer, Use Again” campaign to extend product lifetimes and recyclability.

[Environmental Data explained >](#)

[How we assess product sustainability >](#)



Environmental footprint

Total lifecycle Carbon footprint	37 kg CO2 eq.
Carbon footprint of the manufacturing phase [A1 to A3]	35 kg CO2 eq.
Carbon footprint of the distribution phase [A4]	0.9 kg CO2 eq.
Carbon footprint of the installation phase [A5]	0 kg CO2 eq.
Carbon footprint of the use phase [B2, B3, B4, B6]	0 kg CO2 eq.
Carbon footprint of the end-of-life phase [C1 to C4]	0.8 kg CO2 eq.
Environmental Disclosure	Product Environmental Profile

Use Better



Materials and Substances

Packaging made with recycled cardboard	No
Packaging without single use plastic	No
EU RoHS Directive	Compliant
REACH Regulation	Free of Substances of Very High Concern above the threshold

Use Longer



Lifetime extension

Repair	No
--------	----

Use Again



Repack and remanufacture


Recyclability potential, in %	95
End of life manual availability	No need of specific recycling operations
Take-back	No
WEEE Label	 The product must be disposed on European Union markets following specific waste collection and never end up in rubbish bins

Image of product / Alternate images

Alternative

