



Philips Multigroom  
Grooming kit

**Multigroom**

**QG3260**



## Complete men's styling

With improved precision and skin-friendly trimmer

Multigroom for complete men's styling with superior performance and skin-friendly trimmer, Designed to create any style you want with excellent precision, giving you that sense of pride with a perfect end result.

### **Best performance that feels great**

- Sharper edges for improved cutting performance
- The Rounded Guard is more gentle and glides better on the skin
- Rechargeable cordless

### **Provides maximum ease of use**

- Washable attachments

### **Create the look you want**

- Full size trimmer for beard and head hair
- Mini shaver for finishing edges with a close shave result
- Precision detail trimmer to create and maintain your lines
- Hair clipper comb locks into 9 settings
- 41 mm hair clipper to style your hair
- Nose, ear and eyebrow trimmer
- Beard and moustache comb locks into 9 settings

**PHILIPS**  
sense and simplicity

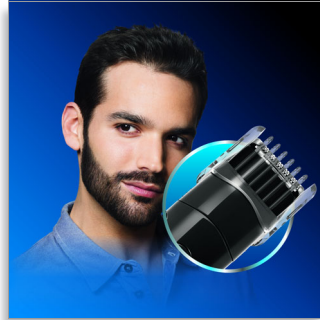
# Highlights

## Full size trimmer



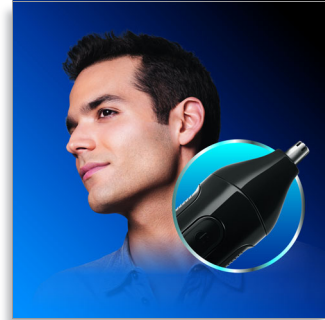
Using the full size trimmer without a comb results in a stubble beard look.

## 9 position beard and moustache comb



9 length settings to trim your facial hair exactly as you want.

## Nose, ear and eyebrow trimmer



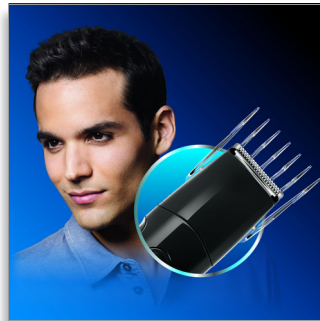
To trim unwanted hairs in an easy and pain-free way.

## Precision detail trimmer



Create any style you want with precision.

## 9 position hair clipper comb



9 length settings to keep your hair neat and styled.

## Charging and usage time



10-hour charge for up to 35 minutes of cordless operation

## Hair clipper



41 mm hair clipper for a sharp and even hair style result

## Mini shaver



To finish your beard style, enjoy the use of the mini shaver, which finishes edges with a close shave result.

## Washable attachments

Washable attachments for fast and convenient cleaning.

## New sharper edges

Sharper edges provide an improved cutting performance for faster and better results



# Specifications

## Ease of use

- Wet and Dry: Washable attachments

## Power system

- Battery type: NiMH
- Charging time: 10 hours
- Running time: 35 minutes
- Usage: Cordless only
- Worldwide voltage: 100-240 V

## Accessories

- Charging stand
- Storage pouch

## Create the look you want

- Beard and moustache comb: 9 positions
- Hair clipper comb: 9 positions

## Attachments

- Full size trimmer blade: 32 mm
- Mini shaver
- Precision trimmer: 21 mm
- Nose, ear and eyebrow trimmer
- Hair clipper: 41 mm

## Maintenance

- Guarantee: 2-year worldwide guarantee
- Lubrication: Blades need no oiling



Issue date 2012-02-25

Version: 11.4.1

© 2012 Koninklijke Philips Electronics N.V.  
All Rights reserved.

Specifications are subject to change without notice.  
Trademarks are the property of Koninklijke Philips  
Electronics N.V. or their respective owners.

[www.philips.com](http://www.philips.com)