

Register your product and get support at  
[www.philips.com/welcome](http://www.philips.com/welcome)

MCD183



---

EN User manual

---

# PHILIPS

## Language Code

Abkhazian	6566	Inupiaq	7375	Pusho	8083
Afar	6565	Irish	7165	Russian	8285
Afrikaans	6570	Íslenska	7383	Quechua	8185
Amharic	6577	Italiano	7384	Raeto-Romance	8277
Arabic	6582	Ivrit	7269	Romanian	8279
Armenian	7289	Japanese	7465	Rundi	8278
Assamese	6583	Javanese	7486	Samoan	8377
Avestan	6569	Kalaallisut	7576	Sango	8371
Aymara	6589	Kannada	7578	Sanskrit	8365
Azerhijani	6590	Kashmiri	7583	Sardinian	8367
Bahasa Melayu	7783	Kazakh	7575	Serbian	8382
Bashkir	6665	Kernewek	7587	Shona	8378
Belarusian	6669	Khmer	7577	Shqip	8381
Bengali	6678	Kinyarwanda	8287	Sindhi	8368
Bihari	6672	Kirghiz	7589	Sinhalese	8373
Bislama	6673	Komi	7586	Slovensky	8373
Bokmål, Norwegian	7866	Korean	7579	Slovenian	8376
Bosanski	6683	Kuanyama; Kwanyama	7574	Somali	8379
Brezhoneg	6682	Kurdish	7585	Sotho; Southern	8384
Bulgarian	6671	Lao	7679	South Ndebele	7882
Burmese	7789	Latina	7665	Sundanese	8385
Castellano, Español	6983	Latvian	7686	Suomi	7073
Catalán	6765	Letzeburgesch;	7666	Swahili	8387
Chamorro	6772	Limburgan; Limburger	7673	Swati	8383
Chechen	6769	Lingala	7678	Svenska	8386
Chewa; Chichewa; Nyanja	7889	Lithuanian	7684	Tagalog	8476
中文	9072	Luxembourgish;	7666	Tahitian	8489
Chuang; Zhuang	9065	Macedonian	7775	Tajik	8471
Church Slavic; Slavonic	6785	Malagasy	7771	Tamil	8465
Chuvash	6786	Magyar	7285	Tatar	8484
Corsican	6779	Malayalam	7776	Telugu	8469
Česky	6783	Maltese	7784	Thai	8472
Dansk	6865	Manx	7186	Tibetan	6679
Deutsch	6869	Maori	7773	Tigrinya	8473
Dzongkha	6890	Marathi	7782	Tonga (Tonga Islands)	8479
English	6978	Marshallese	7772	Tsonga	8483
Esperanto	6979	Moldavian	7779	Tswana	8478
Estonian	6984	Mongolian	7778	Türkçe	8482
Euskara	6985	Nauru	7865	Turkmen	8475
Ελληνικά	6976	Navaho; Navajo	7886	Twi	8487
Faroese	7079	Ndebele, North	7868	Uighur	8571
Français	7082	Ndebele, South	7882	Ukrainian	8575
Frysk	7089	Ndonga	7871	Urdu	8582
Fijian	7074	Nederlands	7876	Uzbek	8590
Gaelic; Scottish Gaelic	7168	Nepali	7869	Vietnamese	8673
Gallegan	7176	Norsk	7879	Volapuk	8679
Georgian	7565	Northern Sami	8369	Walloon	8765
Gikuyu; Kikuyu	7573	North Ndebele	7868	Welsh	6789
Guarani	7178	Norwegian Nynorsk;	7878	Wolof	8779
Gujarati	7185	Occitan; Provençal	7967	Xhosa	8872
Hausa	7265	Old Bulgarian; Old Slavonic	6785	Yiddish	8973
Herero	7290	Oriya	7982	Yoruba	8979
Hindi	7273	Oromo	7977	Zulu	9085
Hiri Motu	7279	Ossetian; Ossetic	7983		
Hrvatski	6779	Pali	8073		
Ido	7379	Panjabi	8065		
Interlingua (International)	7365	Persian	7065		
Interlingue	7365	Polski	8076		
Inuktitut	7385	Português	8084		

# Contents

<b>1 Important</b>	4	<b>8 Adjust volume level and sound effect</b>	23
Safety	4	Adjust volume level	23
Notice	5	Select a sound effect	23
		Mute sound	24
		Listen through headphone	24
<b>2 Your DVD Micro Theater</b>	7		
Introduction	7	<b>9 Other features</b>	24
What's in the box	7	Activate demonstration mode	24
Overview of the main unit	8	Adjust brightness of display panel	24
Overview of the remote control	9	Set the alarm timer	24
		Set the sleep timer	25
		Connect other devices	25
<b>3 Connect</b>	11		
Place the unit	11	<b>10 Product information</b>	26
Connect speakers and subwoofer	11	Specifications	26
Connect FM antenna	11	Supported disc formats	27
Connect TV	12	USB playability information	27
Connect power	13		
<b>4 Get started</b>	14	<b>11 Troubleshooting</b>	28
Prepare the remote control	14		
Set clock	14		
Turn on	14		
Find the correct viewing channel	14		
Select the correct TV system	15		
Change system menu language	15		
Turn on Progressive Scan	15		
<b>5 Play</b>	16		
Play a disc	16		
Play from USB	17		
Play DivX video	17		
Play MP3/WMA/picture files	17		
Play control	18		
Play options	18		
Picture view options	19		
<b>6 Adjust settings</b>	20		
General setup	20		
Audio setup	20		
Video setup	21		
Preference setup	21		
<b>7 Tune to FM radio stations</b>	22		
Program radio stations automatically	22		
Program radio stations manually	23		
Tune to a preset radio station	23		

# 1 Important

## Safety



This 'bolt of lightning' indicates uninsulated material within your unit may cause an electrical shock. For the safety of everyone in your household, please do not remove product covering.

The 'exclamation point' calls attention to features for which you should read the enclosed literature closely to prevent operating and maintenance problems.

**WARNING:** To reduce the risk of fire or electric shock, this apparatus should not be exposed to rain or moisture and objects filled with liquids, such as vases, should not be placed on this apparatus.

**CAUTION:** To prevent electric shock, match wide blade of plug to wide slot, fully insert.

### Important Safety Instructions

- Follow all instructions.
- Heed all warnings.
- Do not use this apparatus near water.
- Clean only with dry cloth.
- Do not block any ventilation openings. Install in accordance with the manufacturer's instructions.
- Do not install near any heat sources such as radiators, heat registers, stoves, or other apparatus (including amplifiers) that produce heat.

- Protect the power cord from being walked on or pinched, particularly at plugs, convenience receptacles, and the point where they exit from the apparatus.
- Only use attachments/accessories specified by the manufacturer.
- Use only with the cart, stand, tripod, bracket, or table specified by the manufacturer or sold with the apparatus. When a cart is used, use caution when moving the cart/apparatus combination to avoid injury from tip-over.



- Unplug this apparatus during lightning storms or when unused for long periods of time.
- Refer all servicing to qualified service personnel. Servicing is required when the apparatus has been damaged in any way, such as power-supply cord or plug is damaged, liquid has been spilled or objects have fallen into the apparatus, the apparatus has been exposed to rain or moisture, does not operate normally, or has been dropped.
- Battery usage CAUTION – To prevent battery leakage which may result in bodily injury, property damage, or damage to the unit:
  - Install all batteries correctly, + and - as marked on the unit.
  - Do not mix batteries (old and new or carbon and alkaline, etc.).
  - Remove batteries when the unit is not used for a long time.
- Apparatus shall not be exposed to dripping or splashing.
- Do not place any sources of danger on the apparatus (e.g. liquid filled objects, lighted candles).
- Where the MAINS plug or an appliance coupler is used as the disconnect device, the disconnect device shall remain readily operable.

### Caution

- Use of controls or adjustments or performance of procedures other than herein may result in hazardous radiation exposure or other unsafe operation.

### Warning

- Where the MAINS plug or an appliance coupler is used as the disconnect device, the disconnect device shall remain readily operable.

### Warning

- Never remove the casing of this unit.
- Never lubricate any part of this unit.
- Place this unit on a flat, hard and stable surface.
- Never place this unit on other electrical equipment.
- Only use this unit indoors. Keep this unit away from water, moisture and liquid-filled objects.
- Keep this unit away from direct sunlight, naked flames or heat.
- Never look into the laser beam inside the unit.

## Hearing safety

### Listen at a moderate volume.

- Using headphones at a high volume can impair your hearing. This product can produce sounds in decibel ranges that may cause hearing loss for a normal person, even for exposure less than a minute. The higher decibel ranges are offered for those that may have already experienced some hearing loss.
- Sound can be deceiving. Over time your hearing 'comfort level' adapts to higher volumes of sound. So after prolonged listening, what sounds 'normal' can actually be loud and harmful to your hearing. To guard against this, set your volume to a safe level before your hearing adapts and leave it there.

### To establish a safe volume level:

- Set your volume control at a low setting.

- Slowly increase the sound until you can hear it comfortably and clearly, without distortion.

### Listen for reasonable periods of time:

- Prolonged exposure to sound, even at normally 'safe' levels, can also cause hearing loss.
- Be sure to use your equipment reasonably and take appropriate breaks.

### Be sure to observe the following guidelines when using your headphones.

- Listen at reasonable volumes for reasonable periods of time.
- Be careful not to adjust the volume as your hearing adapts.
- Do not turn up the volume so high that you can't hear what's around you.
- You should use caution or temporarily discontinue use in potentially hazardous situations. Do not use headphones while operating a motorized vehicle, cycling, skateboarding, etc.; it may create a traffic hazard and is illegal in many areas.

## Notice



This product complies with the radio interference requirements of the European Community.

Any changes or modifications made to this device that are not expressly approved by Philips Consumer Lifestyle may void the user's authority to operate the equipment.

## Care of the environment



Your product is designed and manufactured with high quality materials and components, which can be recycled and reused.

Never dispose of your product with other household waste. Please inform yourself about the local rules on the separate collection of electrical and electronic products and batteries. The correct disposal of these products helps prevent potentially negative consequences on the environment and human health. Your product contains batteries, which cannot be disposed of with normal household waste. Please inform yourself about the local rules on separate collection of batteries. The correct disposal of batteries helps prevent potentially negative consequences on the environment and human health. Please visit [www.recycle.philips.com](http://www.recycle.philips.com) for additional information on a recycling center in your area.

#### Environmental information

All unnecessary packaging has been omitted. We have tried to make the packaging easy to separate into three materials: cardboard (box), polystyrene foam (buffer) and polyethylene (bags, protective foam sheet.) Your system consists of materials which can be recycled and reused if disassembled by a specialized company. Please observe the local regulations regarding the disposal of packaging materials, exhausted batteries and old equipment.



The making of unauthorized copies of copy-protected material, including computer programs, files, broadcasts and sound recordings, may be an infringement of copyrights and constitute a criminal offence. This equipment should not be used for such purposes.



'DVD Video' is a trademark of DVD Format/ Logo Licensing Corporation.



Manufactured under license from Dolby Laboratories. Dolby and the double-D symbol are trademarks of Dolby Laboratories.



DivX®, DivX Certified® and associated logos are registered trademarks of DivX, Inc. and are used under license.

**ABOUT DIVX VIDEO:** DivX® is a digital video format created by DivX, Inc. This is an official DivX Certified device that plays DivX video. Visit [www.divx.com](http://www.divx.com) for more information and software tools to convert your files into DivX video.

**ABOUT DIVX VIDEO-ON-DEMAND:** This DivX Certified® device must be registered in order to play DivX Video-on-Demand (VOD) content. To generate the registration code, locate the DivX VOD section in the device setup menu. Go to [vod.divx.com](http://vod.divx.com) with this code to complete the registration process and learn more about DivX VOD.



The USB-IF Logos are trademarks of Universal Serial Bus Implementers Forum, inc.

**This apparatus includes this label:**



#### Note

- The type plate is located on the bottom of the apparatus.

## 2 Your DVD Micro Theater

Congratulations on your purchase, and welcome to Philips! To fully benefit from the support that Philips offers, register your product at [www.philips.com/welcome](http://www.philips.com/welcome).

### Introduction

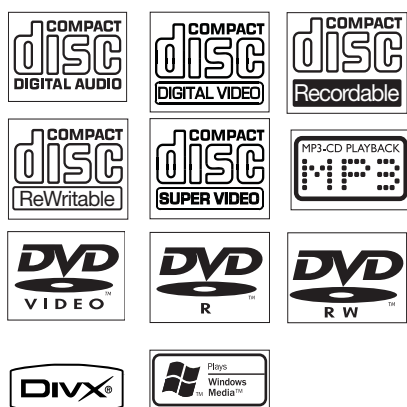
With this unit, you can:

- watch video from DVD/VCD/SVCD or USB devices
- enjoy audio from discs or USB devices
- view pictures from discs or USB devices
- Listen to FM radio

You can enrich sound output with these sound effects:

- Digital Sound Control (DSC)
- Dynamic Bass Boost (DBB)

The unit supports these media/disc formats:



You can play DVD discs with the following region codes:

DVD region code	Countries
	Australia, New Zealand

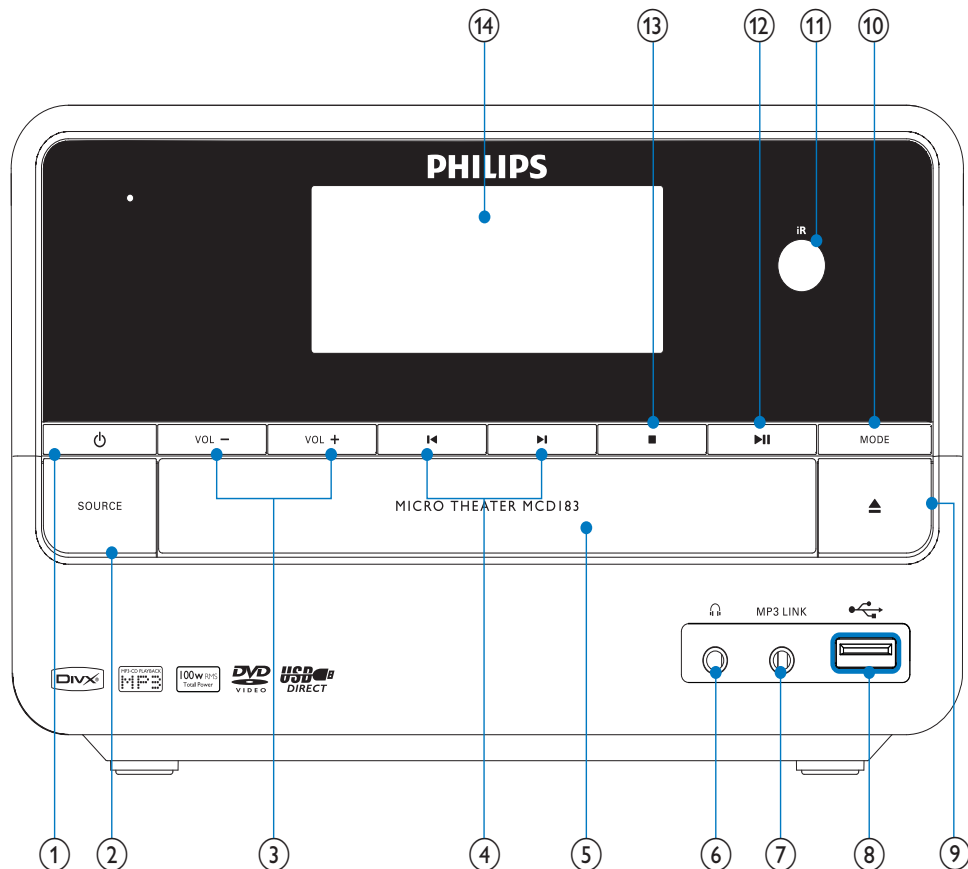
English

### What's in the box

Check and identify the contents of your package:

- Main unit
- 2 speakers
- Subwoofer
- Remote control with battery
- Composite video cable (yellow)
- Power cord
- FM wire antenna
- MP3 Link cable
- User manual
- Quick start guide

## Overview of the main unit

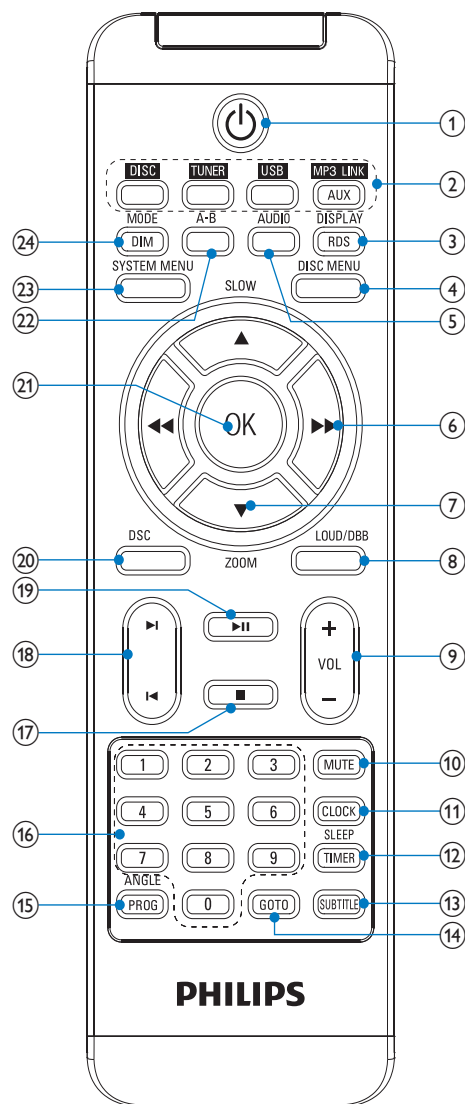


- |  |  |
|--|--|
| <p>① <b>Power</b></p> <ul style="list-style-type: none"> <li>• Turn on the apparatus or switch to the Eco Power standby mode.</li> </ul> <p>② <b>SOURCE</b></p> <ul style="list-style-type: none"> <li>• Select a source.</li> </ul> <p>③ <b>VOL +/-</b></p> <ul style="list-style-type: none"> <li>• Adjust volume.</li> <li>• Adjust time.</li> </ul> <p>④ <b>⏮ / ⏭</b></p> <ul style="list-style-type: none"> <li>• Skip to the previous/next track.</li> </ul> | <ul style="list-style-type: none"> <li>• Skip to the previous/next title or chapter.</li> <li>• Select a preset radio station.</li> </ul> <p>⑤ <b>Disc compartment</b></p> <p>⑥ <b>Headphone socket</b></p> <ul style="list-style-type: none"> <li>• Headphone socket.</li> </ul> <p>⑦ <b>MP3-LINK</b></p> <ul style="list-style-type: none"> <li>• Jack for an external audio device.</li> </ul> <p>⑧ <b>USB DIRECT</b></p> |
|--|--|



- USB socket.
- ⑨ ▲
  - Open or close the disc compartment.
- ⑩ **MODE**
  - Select repeat play modes.
  - Select shuffle play modes.
- ⑪ **Remote control sensor**
- ⑫ ►►
  - Start or pause play.
- ⑬ ■
  - Stop play.
  - Erase a program.
  - In demo mode, activate or deactivate demonstration.
- ⑭ **Display panel**
  - Display current status.

## Overview of the remote control

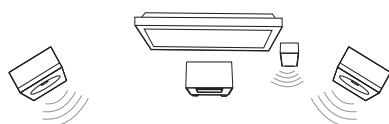


- ① ⏻
  - Turn on the apparatus or switch to the Eco Power standby mode.

- ② **Source selection keys**
  - Select a source.
- ③ **DISPLAY/RDS (RDS is unavailable for this version.)**
  - Display play information on a connected TV.
- ④ **DISC MENU**
  - For video discs: access or exit the disc menu.
  - For video discs with playback control(PBC): turn on/off PBC.
- ⑤ **AUDIO**
  - For VCD, select stereo, mono-left or mono-right channel.
  - For DVD/DivX video, select an audio language.
- ⑥ **◀◀ / ▶▶**
  - Search within a track.
  - Tune to a radio station.
  - For menus, navigate left/right.
  - Move an enlarged picture left/right.
- ⑦ **▲ SLOW/ ▼ ZOOM**
  - For menus, navigate up/down.
  - Rotate or invert pictures.
  - ( **▲ SLOW**) For video discs: select a slow play mode.
  - ( **▼ ZOOM**) For video: zoom in/out.
- ⑧ **LOUD/DBB**
  - Turn on or off automatic loudness adjustment.
  - Turn on or off dynamic bass enhancement.
- ⑨ **VOL +/-**
  - Adjust volume.
  - Adjust time.
- ⑩ **MUTE**
  - Mute or restore volume.
- ⑪ **CLOCK**
  - Set the clock.
- ⑫ **SLEEP/TIMER**
  - Set the sleep timer.
  - Set the alarm timer.
- ⑬ **SUBTITLE**
  - Select a subtitle language.
- ⑭ **GOTO**
  - During disc play, specify a position to start play.
- ⑮ **ANGLE/PROG**
  - Select a DVD camera angle.
  - Program tracks.
  - Program titles/chapters for DVD play.
  - Program radio stations.
- ⑯ **Numeric keypad**
  - Select a title/chapter/track directly.
- ⑰ **■**
  - Stop play.
  - Erase a program.
- ⑱ **◀ / ▶**
  - Skip to the previous/next track.
  - Skip to the previous/next title or chapter.
  - Select a preset radio station.
- ⑲ **▶ II**
  - Start or pause play.
- ⑳ **DSC**
  - Select a preset sound setting.
- ㉑ **OK**
  - Confirm a selection.
- ㉒ **A-B**
  - Repeat a specific section within a track/disc.
- ㉓ **SYSTEM MENU**
  - Access or exit the system setup menu.
- ㉔ **MODE/DIM**
  - Select repeat play modes.
  - Select shuffle play modes.
  - Select a brightness level for the display screen.

## 3 Connect

### Place the unit



- 1 Place the unit near to the TV.
- 2 Place the left and right speakers at equal distance from the TV and at an angle of approximately 45 degrees from the listening position.
- 3 Place the subwoofer at the corner of the room or at least one meter away from the TV.

#### Note

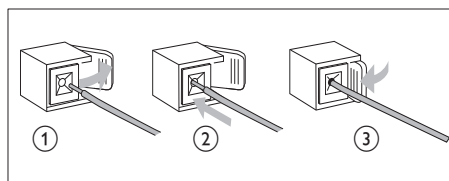
- To avoid magnetic interference or unwanted noise, never place this apparatus and speakers too close to any radiation devices.
- Place this unit on top of a table or mount it on the wall.
- Never place this unit in an enclosed cabinet.
- Install this unit near the AC outlet where the AC power plug can be easily reached.

### Connect speakers and subwoofer

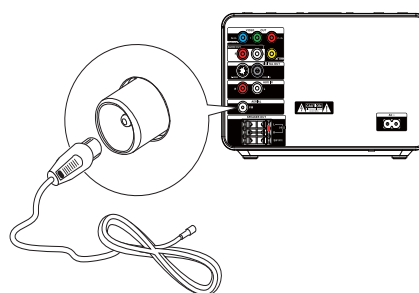
#### Note

- Ensure that the colors of the speaker wires and terminals are matched.
- For optimal sound, use the supplied speakers only.
- Connect only speakers with impedance that is the same or higher than the supplied speakers. Refer to the Specifications section of this manual.

- 1 Hold down the socket flap.
- 2 Insert the stripped part of the wire completely.
  - Insert the right speaker wires to "R", left speaker wires to "L".
  - Insert the subwoofer wires to "SW".
  - Insert the red wires to "+", black wires to "-".
- 3 Release the socket flap.



### Connect FM antenna





#### Tip

- For optimal reception, fully extend and adjust the position of the antenna.
- For better FM stereo reception, connect an outdoor FM antenna to the **FM AERIAL** jack.
- The unit does not support MW radio reception.

- 1 Connect the supplied FM wire antenna to the **FM AERIAL** socket on the unit.

## Connect TV

### Connect video cables

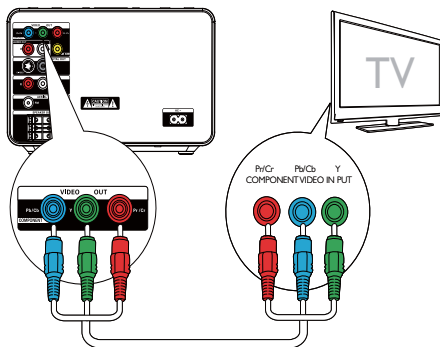
With this connection, you can watch video from the unit on the TV screen.

You can select the best video connection that your TV supports.

- Option 1: connect through component video (for a standard TV or Progressive Scan TV).
- Option 2: connect through S-Video (for a standard TV).
- Option 3: connect through composite video (CVBS) (for a standard TV).

### Option 1: Connect through component video

Connect a progressive scan TV through component video for higher quality video.



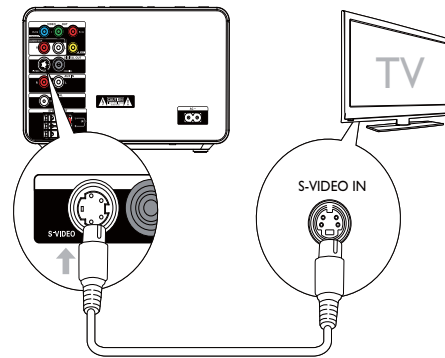
#### Note

- The progressive scan video quality is only available when a progressive scan TV is connected.
- If your TV does not support progressive scan, you cannot view the picture.
- For how to activate progressive scan on your TV, refer to the TV user manual.

Connect a progressive scan TV through component video for higher quality video.

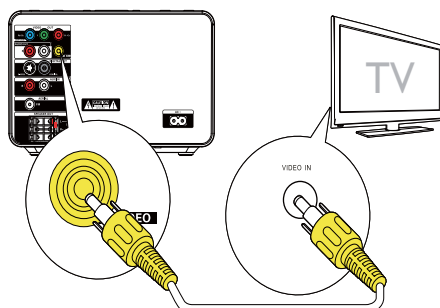
- 1 Connect component video cables (red/blue/green - not supplied) to:
  - the **VIDEO OUT (Pr/Cr Pb/Cb Y)** sockets on this unit.
  - the component input sockets on the TV.

### Option 2: Connect through S-Video



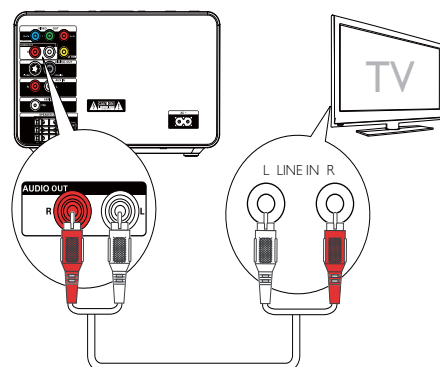
- 1 Connect an S-video cable (not supplied) to:
  - the **S-Video** socket on this unit.
  - the **S-Video** socket on the TV.

### Option 3: Connect through composite video



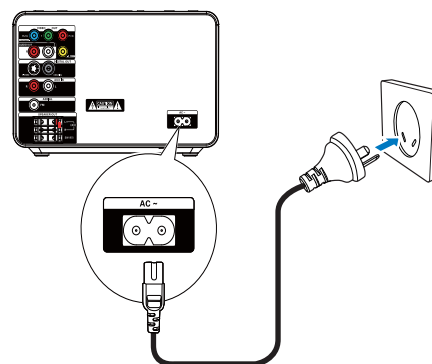
- 1 Connect the supplied composite video cable to:
  - the **VIDEO OUT** socket on this unit.
  - the video input socket on the TV.

### Connect audio cables



- 1 To play sound from the TV through this unit, connect audio cables (red/white - not supplied) to:
  - the **AUX IN L/R** sockets on this unit.
  - the audio output sockets on the TV.

### Connect power



#### ! Caution

- Risk of product damage! Ensure that the power supply voltage corresponds to the voltage printed on the back or the underside of the unit.
- Before connecting the AC power cord, ensure you have completed all other connections.

- 1 Connect the AC power cord to the wall socket.

## 4 Get started

### Caution

- Use of controls or adjustments or performance of procedures other than herein may result in hazardous radiation exposure or other unsafe operation.

Always follow the instructions in this chapter in sequence.

If you contact Philips, you will be asked for the model and serial number of this apparatus. The model number and serial number are on the bottom of the apparatus. Write the numbers here:

Model No. \_\_\_\_\_

Serial No. \_\_\_\_\_

## Prepare the remote control

### Caution

- Risk of explosion! Keep batteries away from heat, sunshine or fire. Never discard batteries in fire.

**For first-time use:**

- 1 Remove the protective tab to activate the remote control battery.

**To replace the remote control batteries:**

- 1 Open the battery compartment.
- 2 Insert one lithium CR2025 battery with correct polarity (+/-) as indicated.
- 3 Close the battery compartment.


### Note

- Before you press any function button on the remote control, first select the correct source with the remote control.
- If you are not going to use the remote control for a long time, remove the battery.


## Set clock

- 1 In the Eco Power standby mode, press and hold **CLOCK** to activate the clock setting mode.
  - ↳ The hour digits are displayed and begin to blink.
- 2 Press **+VOL -** to set the hour.
  - ↳ The minute digits are displayed and begin to blink.
- 3 Press **CLOCK** to confirm the clock setting.
- 4 Press **+VOL -** to set the minute.
- 5 Press **CLOCK** to confirm the clock setting.

## Turn on

- 1 Press .
  - ↳ The unit switches to the last selected source.

## Switch to Eco Power standby mode

- 1 Press  to switch the unit to Eco Power Standby mode.
  - ↳ The backlight on the display panel turns off.
  - ↳ The blue Eco Power indicator turns on.

### Tip

- In the Eco Power mode, you can press **CLOCK** to switch to the standby mode and view the clock (if set).
- If the system remains in the standby mode for more than 90 seconds, it switches to the Eco Power mode automatically.

## Find the correct viewing channel

- 1 Press  to turn on the unit.

- 2 Press **DISC** to switch to disc mode.
- 3 Turn on the TV and switch to the correct video-in channel in one of the following ways:
  - Go to the lowest channel on your TV, then press the Channel Down button until you see the Philips screen.
  - Press the source button repeatedly on the remote control of your TV.

**Tip**

- The video-in channel is between the lowest and highest channels and may be called FRONT, A/V IN, VIDEO etc. See the TV user manual on how to select the correct input on the TV.

## Select the correct TV system

Change this setting if the video does not appear correctly. By default, this setting matches the most common setting for TVs in your country.

- 1 Press **SYSTEM MENU**.
- 2 Select **[Preference Page]**.
- 3 Select **[TV Type]** and then press **▶▶**.
- 4 Select a setting and then press **OK**.
  - **[PAL]** - For TV with PAL color system.
  - **[Auto]** - For TV that is compatible with both PAL and NTSC.
  - **[NTSC]** - For TV with NTSC color system.
- 5 To exit the menu, press **SYSTEM MENU**.

## Change system menu language

- 1 Press **SYSTEM MENU**.
- 2 Select **[General Setup Page]**.
- 3 Select **[OSD Language]** and then press **▶▶**.
- 4 Select a setting and then press **OK**.
- 5 To exit the menu, press **SYSTEM MENU**.

## Turn on Progressive Scan

Progressive scan displays twice the number of frames per seconds than interlaced scanning (ordinary TV system). With nearly double the number of lines, progressive scan offers higher picture resolution and quality.

Before you turn on this feature, ensure that:

- The TV supports progressive scan signals.
- You have connected this unit with the TV through component video.

- 1 Turn on the TV.
- 2 Ensure that the TV progressive scan mode is deactivated (see the TV user manual).
- 3 Switch the TV to the correct viewing channel for this unit.
- 4 Press **DISC**.
- 5 Press **SYSTEM MENU**.
- 6 Press **◀◀ / ▶▶** to select **[Video Setup Page]** in the menu, then press **▼**.
- 7 Select **[Component] > [Pr/Cr Pb/Cb Y]**, then press **OK**.
- 8 Select **[TV Mode] > [Progressive]**, then press **OK**.
- 9 To proceed, select **[OK]** and press **OK**.  
 ↳ The progressive setup is complete.

**Note**

- If a blank/distorted screen is displayed, wait for 15 seconds for auto recovery or turn off progressive scan manually.

- 10 Turn on the progressive scan mode on the TV.

## 5 Play

### Note

- With some disc/file types, play may differ.

### Play a disc

### Caution

- Never look at the laser beam inside the unit.
- Risk of product damage! Never play discs with accessories such as disc stabilizer rings or disc treatment sheets.
- Never put any objects other than discs into the disc compartment.

- 1 Press **DISC** to select the DISC source.
- 2 Press **▲** on the front panel.  
↳ The disc tray opens.
- 3 Place a disc onto the tray and press **▲**.  
↳ Ensure that the label faces up.
- 4 Play starts automatically.
  - To stop play, press **■**.
  - To pause or resume play, press **▶||**.
  - To skip to the previous/next title/chapter/track, press **◀|** / **|▶**.**If play does not start automatically:**
  - Select a title/chapter/track and then press **▶||**.

### Tip

- To play a locked DVD, enter the 4-digit parental control password.

### Use the disc menu

When you load a DVD/(S)VCD disc, a menu may be displayed on the TV screen.

To access or exit the menu manually:

- 1 Press **DISC MENU**.

**For VCD with PlayBack Control (PBC) feature (version 2.0 only):**

With the PBC feature, you can play VCD interactively according to the menu screen.

- 1 During play, press **DISC MENU** to enable/disable PBC.
  - ↳ When PBC is enabled, the menu screen is displayed.
  - ↳ When PBC is disabled, normal play is resumed.

### Select an audio language

You can select an audio language on DVDs or DivX video.

- 1 During disc play, press **AUDIO**.
  - ↳ The language options appear. If the selected audio channels is unavailable, the default disc audio channel is used.

### Note

- For some DVDs, the language can only be changed from the disc menu. Press **DISC MENU** to access the menu.

### Select a subtitle language

You can select a subtitle language on DVDs or DivX® Ultra discs.

- During play, press **SUBTITLE**.

### Tip

- For some DVDs, the language can only be changed from the disc menu. Press **DISC MENU** to access the menu.

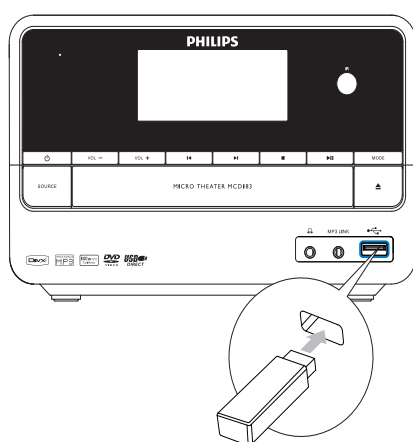


## Play from USB

### Note

- Ensure that the USB device contains playable music, pictures or video.

- 1 Insert the USB device.



- 2 Press **USB** to select the USB source.
- 3 Press **▲** / **▼** to select a folder; then press **OK** to confirm.
- 4 Press **▲** / **▼** to select a file from the folder.
- 5 Press **▶||** to start play.
  - To stop play, press **■**.
  - To pause or resume play, press **▶||**.
  - To skip to the previous/next file, press **◀|** / **|▶**.
  - To return to the upper-level menu, press **DISC MENU**, then press **OK** to confirm.

## Play DivX video

You can play DivX files copied onto a CD-R/ RW, recordable DVD or USB device.

- 1 Insert a disc or connect a USB device.
- 2 Select a source:
  - For discs, press **DISC**.
  - For USB devices, press **USB**.
- 3 Select a file to play and press **▶||**.
  - To stop play, press **■**.
  - To pause or resume play, press **▶||**.
  - To change a subtitle language, press **SUBTITLE**.

### Note

- You can only play DivX videos rented or purchased through the DivX registration code of this unit.
- Subtitle files with the following filename extensions (.srt, .smi, .sub, .ssa, .ass) are supported but do not appear on the file navigation menu.
- The subtitle filename has to be the same as the file name of the video.

## Play MP3/WMA/picture files

You can play MP3/WMA/picture files copied onto a CD-R/RW, recordable DVD or USB device.

- 1 Insert a disc or connect a USB device.
- 2 Select a source:
  - For discs, press **DISC**.
  - For USB devices, press **USB**.
- 3 Press **▲** / **▼** to select a folder; then press **OK** to confirm.
- 4 Press **▲** / **▼** to select a file from the folder.
- 5 Press **▶||** to start play.
  - To stop play, press **■**.
  - To pause or resume play, press **▶||**.
  - To skip to the previous/next file, press **◀|** / **|▶**.
  - To return to the upper-level menu, press **DISC MENU**, then press **OK** to confirm.

---

## Play control

---

### Select repeat/shuffle play options

- 1 During play, press **MODE/DIM** repeatedly to select a repeat option or the shuffle play mode.
  - To resume normal play, press **MODE/DIM** repeatedly until no option is displayed.

---

### Repeat A-B (DVD/VCD/CD/MP3/WMA)

- 1 During music or video play, press **A-B** at the start point.
- 2 Press **A-B** at the end point.
  - ↳ The selected section starts to play repeatedly.
  - To cancel repeat play, press **A-B** again.

---

#### Note

- The section A and B can be set only within the same track/title.

---

### Search forward/backward

- 1 During play, press **◀◀/▶▶** repeatedly to select a search speed.
  - To resume play at normal speed, press **▶▶**

---

### Search by time or chapter/track number

- 1 During video/audio play, press **GOTO** until a time field or chapter/track field is displayed.
  - For the time field, enter the play position in hours, minutes and seconds.
  - For the chapter/track field, enter the chapter/track.

- Play starts automatically at your selected point.

---

### Resume video play from last stopped point



#### Note

- This feature is only available for DVD/VCD play.

- 1 In stop mode and when the disc has not been removed, press **▶▶**.

To cancel resume mode and stop play completely:

- 1 In stop mode, press **■**.

---

## Play options

---

### Display play information

- 1 During play, press **DISPLAY/RDS** repeatedly to display play information.

---

### Program

For video discs/audio CDs:

- 1 In stop mode, press **ANGLE/PROG** to access the program menu.
- 2 Enter the tracks/chapters to add to the program.
- 3 Repeat step 2 until the program is complete.
- 4 Select **[Start]** to play the program.

For Divx/MP3/WMA files:

- 1 During play mode, press **DISC MENU** until the file list is displayed.
- 2 Select a file, then press **ANGLE/PROG** to add the file to the program list.
- 3 Repeat steps 2 until the program is complete.
- 4 Press **DISC MENU** until the program list is displayed.

5 Press **▶II** to play the program.

To delete a file from the [Program List]:

- 1 Press **DISC MENU** until the program list is displayed.
- 2 Select a file, then press **ANGLE/PROG** to delete the file from the program list.

### Zoom in/out image

- 1 During video play, press **▼ (ZOOM)** repeatedly to zoom in/out the image.
  - When the image is zoomed in, you can press **◀◀ / ▶▶** to pan through the image.

### Slow-motion play

- 1 During video play, press **▲ (SLOW)** repeatedly to select a slow play option.
  - ↳ The sound is muted.
  - ↳ To resume play at normal speed, press **▶II**.

### Change the audio channel



#### Note

- This feature is only available for VCD/DivX play.

- 1 During play, press **AUDIO** repeatedly to select an audio channel available on the disc:
  - Mono Left
  - Mono Right
  - Stereo

### Select a camera angle



#### Note

- This feature is only available for DVDs recorded with multiple camera angles.

- 1 During play, press **ANGLE/PROG** repeatedly to select a camera angle.

## Picture view options

### Preview pictures

- 1 During play, press **■**
  - ↳ The thumbnails of 12 pictures are displayed.
- 2 Select one of the following:
  - a picture
  - the slide show option
  - the menu option
  - the next/previous page (if available)
- 3 Press **OK** to:
  - play the selected picture
  - start slide show of all pictures
  - enter the menu where each remote key function is explained
  - turn to the next/previous page (if available)

### Select a slide show play mode

- 1 During play, press **ANGLE/PROG** repeatedly to select a slide-show play mode.

### Rotate picture

- 1 During play, press **▲ / ▼** to rotate the picture anti-clockwise/clockwise.

## 6 Adjust settings

- 1 Press **SYSTEM MENU**.
- 2 Select a setup page.
- 3 Select an option and then press **▶▶**.
- 4 Select a setting and then press **OK**.
  - To return to the previous menu, press **◀◀**.
  - To exit the menu, press **SYSTEM MENU**.

### General setup

On **[General Setup Page]**, you can set the following options:

#### **[TV Display]**

The TV format determines the aspect ratio of display according to the type of TV you have connected.



4:3 Pan Scan (PS)



4:3 Letter Box (LB)



16:9 (Wide Screen)

- **[4:3 Pan Scan]** – For 4:3 screen TV: full-height display with the trimmed sides.
- **[4:3 Letter Box]** – For 4:3 screen TV: wide-screen display with black bars on the top and bottom of the screen.
- **[16:9]** – For wide-screen TV: display ratio 16:9.

#### **[OSD Language]**

Select the preferred language for on-screen display.

#### **[Screen Saver]**

The screen saver protects the TV screen damage due to prolonged exposure to a static image.

- **[On]** – Enable the screen saver.
- **[Off]** – Disable the screen saver.

#### **[DIVX (R) VOD]**

Display the DivX® registration code.



#### **Tip**

- Enter this DivX registration code when you rent or purchase video from <http://vod.divx.com/>. The DivX videos rented or purchased through the DivX® VOD (Video On Demand) service can be played only on the device to which it is registered.

### Audio setup

On **[Audio Setup Page]**, you can set the following options:

#### **[DOLBY DIGITAL SETUP]**

Select audio signals output to speakers.

- **[L-Mono]** – To apply the left mono mode, select this option.
- **[Stereo]** – If the sound is delivered from the two front speakers only, select this option.
- **[R-MONO]** – To apply the right mono mode, select this option.

#### **[Digital Output]**

Select audio formats supported by the connected device.

- **[OFF]** – Turn off the digital output.
- **[All]** – If the connected device supports multi-channel audio formats, select this option.
- **[PCM ONLY]** – If the connected device cannot decode multichannel audio, select this option.

#### **[3D] > [3D Processing Page] > [Reverb Mode]**

Select a virtual surround sound mode.

#### **[HDCD] > [HDCD Setup Page] > [Filter]**

When you play a HDCD (High Definition Compatible Digital) disc, select the audio output cutoff frequency.

#### **[Night Mode]**

Make loud sound level softer and soft sound level louder so that you can watch the DVD

movies at a low volume, without disturbing others.

- **[On]** – enjoy quiet viewing at night (DVDs only).
- **[Off]** – enjoy surround sound with its full dynamic range.

## Video setup

On **[Video Setup Page]**, you can set the following options:

### [Component]

Set the video output according to the video connection. If the composite connection is used, this setting is not required.

- **[CVBS]** – If the S-Video connection is used, select this option.
- **[Pr/Cr Pb/Cb Y]** – If the component connection is used, select this option.
- **[S-VIDEO]** – If the S-Video connection is used, select this option.

### [TV Mode]

Select the video output mode. To select the progressive scan mode, ensure that you have connected a progressive scan TV and set

**[Component]** to **[Pr/Cr Pb/Cb Y]**.

- **[Progressive]** – For progressive scan TV: turn on the progressive scan mode.
- **[Interlace]** – For ordinary TV: turn on the interlace mode.

### [Picture Setting] > [Picture Setting Setup]

Customize picture color settings.

- **[Auto]** – For TV that is compatible with both PAL and NTSC.
- **[NTSC]** – For TV with NTSC color system.

### [Audio]

Select the preferred audio language for disc play.

### [Subtitle]

Select the preferred subtitle language for disc play.

### [Disc Menu]

Select the preferred disc menu language.



#### Note

- If the language you have set is not available on the disc, the disc uses its own default language.
- For some discs, the subtitle/audio language can only be changed from the disc menu.

### [Parental]

Restricts access to discs that are unsuitable for children. These types of discs must be recorded with ratings.

Press **OK**.

Select a rating level, then press **OK**.

Press the numeric keys to enter the password.



#### Note

- Rated discs above the level you set in **[Parental]** require a password to be played.
- The ratings are country-dependent. To allow all discs to play, select **[8 ADULT]**.
- Some discs have ratings printed on them but are not recorded with ratings. This function has no effect on such discs.



#### Tip

- You can set or change the password. (See "Preference setup - Password setup".)

### [Default]

Resets all the settings of this unit to factory default, except for the password and parental settings.

## Preference setup

On **[Preference Page]**, you can set the following options:

### [TV Type]

Change this setting if the video does not appear correctly. By default, this setting matches the most common setting for TVs in your country.

- **[PAL]** – For TV with PAL color system.

[Password Setup] > [Password Setup Page] > [Password Mode]

This setting allows you to enable/disable the password for parental control. If the password is enabled, when you play a prohibited disc, this 4-digit password is required.

- **[On]** - Enable the password for parental control.
- **[Off]** - Disable the password for parental control.

[Password Setup] > [Password Setup Page] > [Password]

You can change password here. The default password is 1234.

- **[Change]**

- 1) Press the numeric keys to enter '1234' or your last set password at **[Old Password]** field.
- 2) Enter the new password at **[New Password]** field.
- 3) Enter the new password again at **[Confirm PWD]** field.
- 4) Press **OK** to exit the menu.

#### Note

- If you forget the password, enter '1234' before you set a new password.

## 7 Tune to FM radio stations

- 1 Ensure that you have connected and fully extended the supplied FM antenna.
- 2 Press **TUNER**.
- 3 Press and hold **◀◀ / ▶▶**.
- 4 When the frequency indication starts to change, release the button.
  - ↳ The FM tuner tunes to a station with strong reception automatically.
- 5 Repeat steps 3-4 to tune to more stations.

**To tune to a weak station:**

Press **◀◀ / ▶▶** repeatedly until you find optimal reception.

### Program radio stations automatically

#### Note

- You can program a maximum of 20 preset radio stations.

- 1 Press and hold **ANGLE/PROG** for 2 seconds to activate automatic programming.
  - ↳ **[AUTO]** (auto) is displayed briefly.
  - ↳ All available stations are programmed in the order of waveband reception strength.
  - ↳ The first programmed radio station is broadcast automatically.

## Program radio stations manually

### Note

- You can program a maximum of 20 preset radio stations.

- 1 Tune to a radio station.
- 2 Press **ANGLE/PROG** to activate programming.
- 3 Press **◀/▶** to allocate a number from 1 to 20 to this radio station, then press **ANGLE/PROG** to confirm.
  - ↳ The preset number and the frequency of the preset station are displayed.
- 4 Repeat the above steps to program other stations.

### Note

- To overwrite a programmed station, store another station in its place.

## Tune to a preset radio station

- 1 Press **◀/▶** to select a preset number that you want.

## 8 Adjust volume level and sound effect

### Adjust volume level

- 1 During play, press **VOL +/-** to increase/decrease the volume level.

### Select a sound effect

#### Note

- You cannot use different sound effects at the same time.

### Select a preset sound effect

- 1 During play, press **DSC** repeatedly to select:
  - **[ROCK]** (rock)
  - **[JAZZ]** (jazz)
  - **[POP]** (pop)
  - **[CLASSIC]** (classic)
  - **[FLAT]** (flat)

### Enhance bass

- 1 To turn on bass enhancement, press **LOUD/DBB** repeatedly during play until the DBB logo is displayed.
  - To turn off bass enhancement, press **LOUD/DBB** repeatedly until the DBB logo disappears.

---

### Select automatic loudness control

Automatic loudness control increases the treble and bass effect at low volume levels (the higher the volume, the lower the treble and bass levels).

- 1 To turn on automatic loudness control, press **LOUD/DBB** during play until the loudness icon is displayed.
  - To turn off automatic loudness control, press **LOUD/DBB** until the loudness icon disappears.


---

### Mute sound

- 1 During play, press **MUTE** to mute/unmute sound.

---

### Listen through headphone


- 1 Plug a headphone into the  socket on the unit.

## 9 Other features

---

### Activate demonstration mode

You can see an overview of all features.

- 1 In the standby mode with clock display (if set), press  on the main unit to activate the demonstration mode.
  - ↳ A demonstration of major available features starts.

To deactivate the demonstration mode:

- 1 Press  on the main unit again.

---

### Adjust brightness of display panel

- 1 In standby mode, press **MODE/DIM** repeatedly to select different levels of brightness for the display panel.

---

### Set the alarm timer

- 1 Ensure that you have set the clock correctly.
- 2 In standby mode, press and hold **SLEEP/TIMER**.
  - ↳ The hour digits are displayed and begin to blink.
- 3 Press **+VOL -** to set the hour.
  - ↳ The minute digits are displayed and begin to blink.
- 4 Press **SLEEP/TIMER** to confirm.
- 5 Press **+VOL -** to set the minute.
- 6 Press **SLEEP/TIMER** to confirm.
- 7 To activate the wake-up timer, press **+VOL -** to select **[ON]** (on).
  - ↳ A clock icon appears on the display.



- ➔ The unit turns on automatically at the set time and switches to the last selected source.
- ➔ To deactivate the alarm timer, select [OFF] (off) at step 7.

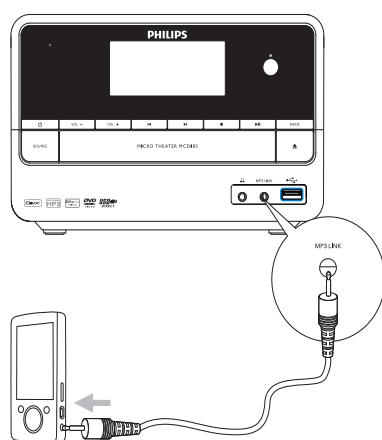
## Set the sleep timer

- 1 When the unit is turned on, press **SLEEP/TIMER** repeatedly to select a set period of time (in minutes).
  - ➔ The unit turns off automatically after the set period of time.

## Connect other devices

### Listen to an audio player

You can listen to audio player through this unit.



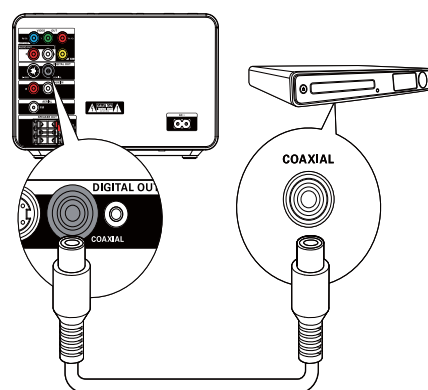
- 1 Connect the audio player:
  - For audio players with red/white audio output sockets: Connect a red/white audio cable (not supplied) to the **AUX IN L/R** sockets and to the audio output sockets on the audio player.

- For audio players with headphone sockets: Connect the supplied MP3 Link cable to the **MP3 LINK** socket and to the headphone socket on the audio player.

- 2 Select the MP3 Link/AUX source.
- 3 Start play on the audio player.

### Record to a digital recorder

You can record audio from this unit to a digital recorder.



- 1 Connect a coaxial cable (not supplied) to:
  - the **COAXIAL** socket
  - the digital input socket on the digital recorder
- 2 Play audio to be recorded.
- 3 Begin to record on the digital recorder (see the digital recorder user manual).

# 10 Product information



## Note

- Product information is subject to change without prior notice.

## Specifications

### Amplifier

Rated Output Power	2X25 + 50W RMS
Frequency Response	20 -20000 Hz, ±3dB
Signal to Noise Ratio	>65dB
Aux Input	0.5 V RMS 20kohm

### Disc

Laser Type	Semiconductor
Disc Diameter	12cm/8cm
Video Decoding	MPEG-1 / MPEG-2 / DivX
Video DAC	12Bits
Signal System	PAL / NTSC
Video Format	4:3 / 16:9
Video S/N	>48dB
Audio DAC	24Bits / 96kHz
Total Harmonic Distortion	<0.1% (1 kHz)
Frequency Response	4Hz - 20kHz (44.1kHz) 4Hz - 22kHz (48kHz) 4Hz - 24kHz (96kHz)
S/N Ratio	>65dBA

### Tuner (FM)

Tuning Range	87.5 - 108MHz
Tuning grid	50KHz
Sensitivity - Mono, 26dB S/N Ratio	<22 dBf
Sensitivity - Stereo, 46dB S/N Ratio	>43 dBf
Search Selectivity	>28dBf
Total Harmonic Distortion	<3%
Signal to Noise Ratio	>55dB

### Speakers

Speaker Impedance	2X4ohm + 8ohm
Speaker Driver	4"
Sensitivity	>80dB/m/W±4dB/m/W

### General information

AC power	230 - 240V, 50 Hz
Operation Power Consumption	30W
Eco Standby Power Consumption	<1W
Composite Video Output	1.0Vp-p, 75ohm
Coaxial Output	0.5Vpp ± 0.1Vpp 75ohm
Headphone Output	2X15mW 32ohm
USB Direct	Version 2.0
Dimensions	
- Main Unit (W x H x D)	200 x 125 x 270mm
- Speaker Box (W x H x D)	135 x 255 x 150 mm
- Subwoofer (W x H x D)	160 x 245 x 260 mm
Weight	
- With Packing	9.25 kg
- Main Unit	2.05 kg
- Speaker Box	2 x 1.25 kg
- Subwoofer	2.7 kg

## Supported disc formats

- Digital Video Discs (DVDs)
- Video CDs (VCDs)
- SuperVideo CDs (SVCDs)
- Digital Video Discs + Rewritable (DVD+RW)
- Compact Discs (CDs)
- Picture (Kodak, JPEG) files on CDR(W)
- DivX(R) disc on CD-R(W):
- DivX 3.11, 4.x and 5.x
- WMA

### Supported MP3-CD formats:

- ISO 9660
- Max. title/album name: 12 characters
- Max. title number plus album: 255.
- Max. nested directory: 8 levels.
- Max. album number: 32.
- Max. MP3 track number: 999.
- Supported sampling frequencies for MP3 disc: 32 kHz, 44.1 kHz, 48 kHz.
- Supported Bit-rates of MP3 disc are: 32, 64, 96, 128, 192, 256 (kbps).
- The following formats are not supported:
  - Files like \*.VMA, \*.AAC, \*.DLF, \*.M3U, \*.PLS, \*.WAV
  - Non-English Album/Title name
  - Discs recorded in Joliet format
  - MP3 Pro and MP3 with ID3 tag

- Directory nesting up to a maximum of 8 levels
- Number of albums/ folders: maximum 99
- Number of tracks/titles: maximum 999
- ID3 tag v2.0 or later
- File name in Unicode UTF8 (maximum length: 128 bytes)

### Unsupported formats:

- Empty albums: an empty album is an album that does not contain MP3/WMA files, and is not be shown in the display.
- Unsupported file formats are skipped. For example, Word documents (.doc) or MP3 files with extension .dlf are ignored and not played.
- AAC, WAV, PCM audio files
- DRM protected WMA files (.wav, .m4a, .m4p, .mp4, .aac)
- WMA files in Lossless format

## USB playability information

### Compatible USB devices:

- USB flash memory (USB 2.0 or USB1.1)
- USB flash players (USB 2.0 or USB1.1)
- memory cards (requires an additional card reader to work with this apparatus)

### Supported formats:

- USB or memory file format FAT12, FAT16, FAT32 (sector size: 512 bytes)
- MP3 bit rate (data rate): 32-320 Kbps and variable bit rate
- WMA v9 or earlier

# 11 Troubleshooting



## Caution

- Never remove the casing of this unit.

To keep the warranty valid, never try to repair the system yourself.

If you encounter problems when using this unit, check the following points before requesting service. If the problem remains unsolved, go to the Philips web site ([www.philips.com/support](http://www.philips.com/support)). When you contact Philips, ensure that your unit is nearby and the model number and serial number are available.

### No power

- Ensure that the AC cord of the apparatus is connected properly.
- Ensure that there is power at the AC outlet.
- As a power-saving feature, the system switches off automatically 15 minutes after track play reaches the end and no control is operated.

### No disc detected

- Insert a disc.
- Check if the disc is inserted upside down.
- Wait until the moisture condensation at the lens has cleared.
- Replace or clean the disc.
- Use a finalized CD or correct format disc.

### No picture

- Check the video connection.
- Turn on the TV to the correct Video-In channel.
- Progressive scan is activated but the TV does not support progressive scan.

### Black and white or distorted picture

- The disc does not match the TV color system standard (PAL/NTSC).
- Sometimes a slight picture distortion may appear. This is not a malfunction.

- Clean the disc.
- A distorted picture may appear during progressive scan setup.

**The aspect ratio of the TV screen cannot be changed even though you have set the TV display format.**

- The aspect ratio is fixed on the loaded DVD disc.
- The aspect ratio may not be changed for some TV systems.

### No sound or poor sound

- Adjust the volume.
- Disconnect the headphones.
- Check that the speakers are connected correctly.
- Check if the stripped speaker wires are clamped.

### Remote control does not work

- Before you press any function button, first select the correct source with the remote control instead of the main unit.
- Reduce the distance between the remote control and the unit.
- Insert the battery with its polarities (+/- signs) aligned as indicated.
- Replace the battery.
- Aim the remote control directly at the sensor on the front of the unit.

### Disc does not play

- Insert a readable disc and ensure that the label side faces up.
- Check the disc type, color system and regional code. Check for any scratches or smudges on the disc.
- Press **SYSTEM MENU** to exit the system setup menu.
- Disable the password for parental control or change the rating level.
- Moisture has condensed inside the system. Remove the disc and leave the system turned on for about an hour. Disconnect and reconnect the AC power plug, and then turn on the system again.

- As a power-saving feature, the system turns off automatically 15 minutes after disc play reaches the end and no control is operated.

#### **Poor radio reception**

- Increase the distance between the unit and your TV or VCR.
- Fully extend the FM antenna.
- Connect an outdoor FM antenna instead.

#### **Unable to select Progressive Scan**

- Ensure the video output mode is set to [Pr/Cr Pb/Cb Y].

#### **Audio or subtitle languages cannot be set**

- The disc is not recorded with sound or subtitles in multiple languages.
- The audio or subtitle language setting is prohibited on the disc.

#### **Cannot display some files in USB device**

- The number of folders or files in the USB device has exceeded a certain limit. This phenomenon is not a malfunction.
- The formats of these files are not supported.

#### **USB device not supported**

The USB device is incompatible with the unit. Try another one.

#### **Timer does not work**

- Set the clock correctly.
- Switch on the timer.

#### **Clock/timer setting erased**

- Power has been interrupted or the power cord has been disconnected.
- Reset the clock/timer.



**PHILIPS CONSUMER LIFESTYLE  
WARRANTY POLICY FOR AUSTRALIA**

Effective 1st July 2010

Philips provides its Consumer Electronics products with a 1 Year Manufacturers Warranty.

**The benefits given to the purchaser by this warranty are in addition to all other rights and remedies, which the purchaser has in respect of the product under the Trade Practices Act or other Commonwealth or State Law.**

The conditions contained in this warranty replace and override the provision of the Philips World-Wide Guarantee for products purchased in Australia and used in Australia.

Please record the following information for your records and keep in a safe place.

It is essential that you retain your original purchase receipt to make a warranty claim.

Model number	:	.....
Serial number	:	.....
Date of purchase	:	.....
Retailer	:	.....
Purchase Price	:	.....

If you require assistance with the operation of the product, its features or specifications, please call the **Philips Consumer Care Centre** on **1300 363 391** where support is provided by our trained staff.

If your product develops a fault during the 12 month warranty period and has a purchase price of less than \$250, please return the faulty product back to the place of purchase.

If your product develops a fault during the 12 month warranty period and has a purchase price of more than \$250, or if you would like to discuss a repair options for an out of warranty repair, please call **1300 361 392** for your nearest Philips Authorised Service Centre.

**Conditions of Warranty**

- For products with a purchase price of less than \$250, claims for warranty can only be made at the place of purchase. A copy of the purchase receipt will be required.
- For products with a purchase price of more than \$250, claims for warranty can only be made at a Philips Authorised Service Centre. A copy of the purchase receipt will be required.
- The warranty period is valid from the original date of purchase of the product.
- This warranty extends only to defects in material or workmanship occurring under normal use of the product when operated in accordance with the instructions.
- Philips may, at its discretion choose to repair or replace this product.
- If a replacement product is supplied, it is warranted for the remainder of the warranty period, from the original date of purchase.
- This Manufacturers Warranty is limited to 3 months for products used in commercial applications.
- Product accessories are covered by the same warranty period. If an accessory is faulty, please contact the Philips Consumer Care Centre on **1300 363 391**.
- This Manufacturers Warranty is neither transferable nor valid in countries other than Australia.

**This Warranty does not cover:-**

- Service costs arising from failure to correctly adjust the controls of the product or to observe the instructions, or inspections that reveal that the product is in normal working order.
- Product failures caused by misuse, neglect, accidental breakage, transit damage, repairs or modification by unauthorised persons, external fires, lightning strikes, floods, vermin infestation or liquid spillage.
- TV or radio signal reception problems, replacement of worn or used batteries or other consumables.
- Second hand or refurbished products.
- Products sold on the internet or online.
- Product failure, caused by other products.

Version 1.5: 1<sup>st</sup> July 2010

## New Zealand - Guarantee and Service for New Zealand

English

Thank-you for purchasing this quality Philips product.

Philips New Zealand Ltd guarantees this product against defective components and faulty workmanship for a period of 12 months. Any defect in materials or workmanship occurring within 12 months from the date of purchase subject to the following conditions will be rectified free of charge by the retailer from whom this product was purchased.

### Conditions

1. The product must have been purchased in New Zealand. As proof of purchase, retain the original sales docket indicating the date of purchase.
2. The guarantee applies only to faults caused by defective components, or faulty workmanship on the part of the manufacturer.
3. The guarantee does not cover failures caused by misuse, neglect, normal wear and tear, accidental breakage, use on the incorrect voltage, use contrary to operating instructions, or unauthorised modification to the product or repair by an unauthorised technician.
4. Reasonable evidence (in the form of a sales docket) must be supplied to indicate that the product was purchased no more than 12 months prior to the date of your claim.
5. In the event of a failure, Philips shall be under no liability for any injury, or any loss or damage caused to property or products other than the product under guarantee.

This guarantee does not prejudice your rights under common law and statute, and is in addition to the normal responsibilities of the retailer and Philips.

### How to claim

Should your Philips product fail within the guarantee period, please return it to the retailer from whom it was purchased. In most cases the retailer will be able to satisfactorily repair or replace the product.

However, should the retailer not be able to conclude the matter satisfactorily, or if you have other difficulties claiming under this guarantee, please contact

### The Guarantee Controller Philips New Zealand Ltd.

✉ P.O. Box 41.021

Auckland

☎ (09) 84 94 160

fax ☎ (09) 84 97 858

