



beard trimmer

- 1mm precision settings
- Stainless steel blades
- 10h charge/45mins cordless use

QT4000/15

Perfect beard made easy

The most convenient way to start with your beard

Style your beard the way you want with this beard trimmer. Precision from as short as 1mm up to 10mm.

Benefits

Precision

- 1mm precision
- Easy to select and lock-in length settings, 1-10mm

Skin friendly performance

- Stainless Steel Blades for long-lasting sharpness
- Skin-friendly rounded tips for smooth skin contact

Easy to use

- Up to 45 minutes of cordless use after 10 hours charging
- Ergonomic design for easier handling
- Detacheable head for easy cleaning
- 2 year guarantee, worldwide voltage, no oil needed

PHILIPS

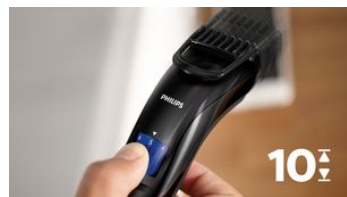
Features

Perfect beard every day



Set the trimmer at the lowest position for a perfect 3-day beard, just 1mm long.

10 lock-in length settings



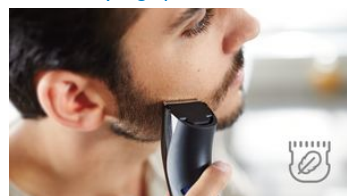
Turn the wheel to simply select and lock-in the length settings you want: from a short beard of 1mm up to a full beard of 10mm, in precise 1mm steps.

Stainless Steel Blades



Get a perfect yet protective trim, time after time. The trimmer's steel blades lightly brush against one another, sharpening themselves as they trim so they stay extra sharp and effective as on day 1.

Skin-friendly high-performance



Blades stay extra-sharp to always cut hairs neatly and effectively, but have rounded blade tips and combs to prevent irritation.

Cordless Use



Rechargeable only. Up to 45 minutes of cordless power after 10 hours of charging.

Ergonomic design



Easy to hold and use, it's designed to help you trim those hard-to-reach areas.

Easy to clean



Detach the head and rinse it under the tap for easy cleaning. Dry it before you put it back on the appliance.

Built to last



We back this Philips trimmer with a 2-year guarantee: our grooming products are built to last. You'll never need to oil it, and it's compatible with all worldwide voltages.

Specifications

Please note that this is a pre-sales leaflet. The contents of this leaflet reflect the best of our knowledge per date and country mentioned above. The contents of this leaflet are subject to change without notice. Philips does not accept any liability as to the contents of this leaflet.

Service

2-year worldwide guarantee	Yes
----------------------------	-----

Accessories

Cleaning brush	Yes
----------------	-----

Create the look you want

Styles	Short beard
--------	-------------

Cutting system

Cutter width	32 mm
Number of length settings	10

Precision (size of steps)	by 1 mm
Comb type	Stubble
Non-scratching teeth	For more comfort
Range of length settings	1 up to 10 mm
Cutting element	Stainless steel blades

Ease of use

Secured length settings	Yes
Zoomring	Easily adjust length settings
Charge indication	On plug
Battery	1x AAA NiMH
Easy Cleaning	Washable attachments

Beardtrimmer series 3000

Power system

Charging time	10 hours
Running time	Up to 45 minutes
Battery type	Ni-MH
Worldwide voltage	100-240 V

Design

Handle	Easy grip
--------	-----------

Packaging dimensions

Height	17.00 cm
Width	10.00 cm
Depth	6.50 cm
Nett weight	0.21 kg
Gross weight	0.27 kg

EAN	08710103792833
Number of products included	1
Country of origin	ID
Harmonised Systems Code	851020

Outer Carton

Length	30.80 cm
Width	13.80 cm
Height	18.60 cm
Gross weight	1.76 kg
EAN	18710103792830
Number of consumer packagings	6



data subject to change
2017, May 25

Version: 8.0.1
EAN: 08710103792833

© 2017 Koninklijke Philips N.V.
All rights reserved.

Specifications are subject to change without notice. Trademarks are the property of Koninklijke Philips N.V. or their respective owners.

www.philips.com