

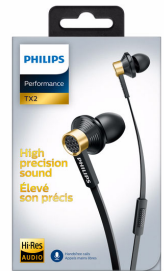


Philips
In-ear headphones with
mic

13.5-mm drivers/closed-back
In-ear



TX2BK



High-Resolution Sound

Premium drivers with oval sound tubes

The Philips TX2 delivers high resolution sound with extended bass thanks to premium drivers and oval sound tubes. Custom-fit comfy ear caps ensure an immersive experience, while the flat cable keeps you tangle free.

Sound technology excellence

- High-resolution audio reproduces music in its purest form
- Hybrid architecture for precise sound and extended bass
- Ultra-lightweight voice coil for extended high frequencies
- Brass metal ring reduces vibrations for sound clarity
- Noise-isolating ear caps to block out ambient noise

Supreme comfort

- Ergonomic oval sound tube fits securely and comfortably
- Choose from 3 pairs of ear caps for the perfect fit

Design for convenience

- Tangle-free flat cable with slider for convenience on the go
- Reinforced cable relief enhances durability and connectivity

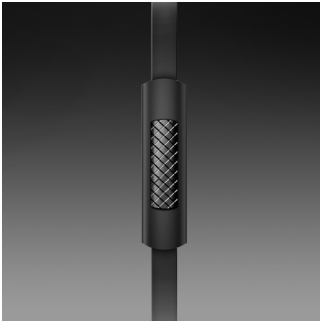
Stay connected to your music and friends

- Built-in microphone switches you from music to phone calls

PHILIPS

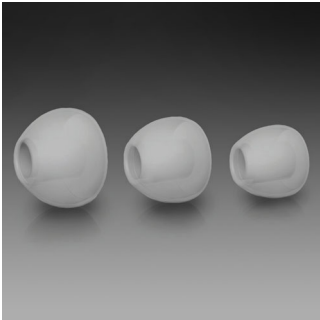
Highlights

Built-in microphone



The built-in microphone lets you switch from listening to music to taking phone calls - easily, so you'll always stay connected with what matters most to you.

Choice of 3 pairs of ear caps



Ear caps come in a choice of 3 sizes – small, medium and large – for a personalised and perfect fit.

Brass metal ring

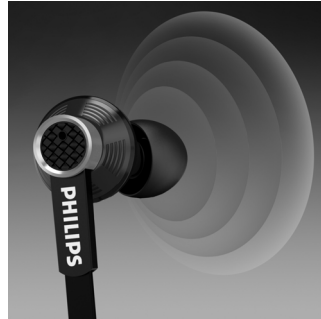
The lightweight brass metal ring reduces vibration to ensure sound clarity and precision.

Ergonomic oval sound tube

The oval shape of the sound tube came about based on extensive research on the human ear. Designed to fit any ear comfortably, the

ergonomic shape ensures optimal fit and comfort for total music enjoyment.

Hybrid architecture



Hybrid architecture utilises high-power neodymium magnets for high-precision sound and enhanced bass impact. Its hybrid form factor utilises larger 13.5-mm speakers in a compact headphone insert, which results in higher-quality sound along with true comfort.

Noise-isolating ear caps



Noise-isolating ear caps block out the ambient noise so that you can immerse yourself fully in your music, without any disturbance.

Reinforced cable relief

To extend the life of your headphones, a soft rubber relief between them and the cable

protects the connection from damage through repeated bending.

Tangle-free flat cable

Flat cable ensures that your cord stays smooth and tangle-free - always. The cable slide adds stylish ease and convenience on the go.

Ultra-lightweight voice coil

The ultra-lightweight voice coil is attached to the speaker, providing the motive force via a magnetic field reaction to the current that passes through it. Because the moving parts of a speaker must be of low mass to accurately reproduce high-frequency sounds, voice coils need to be as lightweight as possible.

High-resolution audio



High-Resolution Audio offers the best in audio performance, reproducing original studio master recordings more faithfully than 16-bit/44.1-kHz CD formats. This uncompromising quality makes High-Resolution Audio the best sound companion for the music lover. These headphones meet the stringent standards required for the Hi-Res Audio stamp of quality.

Specifications

Sound

- Acoustic system: closed
- Diaphragm: Mylar
- Frequency response: 6 - 40,000 Hz
- Magnet type: Neodymium
- Voice coil: CCAW
- Sensitivity: 108 dB
- Speaker diameter: 13.5 mm
- Maximum power input: 30 mW
- Impedance: 32 ohm

Design

- Colour: Black

Connectivity

- Cable Connection: symmetrical
- Cable length: 1.2 m
- Compatible with: iPhone®, BlackBerry®, HTC, LG, MOTOROLA, NOKIA*, SAMSUNG*, SONY
- * Only for latest models. Extra connector available through customer support for Sony Ericsson, older models from NOKIA and SAMSUNG
- Type of cable: Copper
- Connector: 3.5 mm
- Finishing of connector: Gold-plated

Packaging dimensions

- Packaging dimensions (W x H x D): 9.5 x 17.5 x 2.6 cm
- Net weight: 0.0174 kg
- Gross weight: 0.064 kg
- Tare weight: 0.0466 kg
- EAN: 69 23410 72455 4
- Type of shelf placement: Both
- Number of products included: 1
- Packaging type: Carton

Outer Carton

- Outer carton (L x W x H): 38 x 19.3 x 25 cm
- Net weight: 0.4176 kg
- Gross weight: 2.108 kg
- Tare weight: 1.6904 kg
- GTIN: 1 69 23410 72455 1
- Number of consumer packages: 24

Inner Carton

- Inner carton (L x W x H): 18 x 8.6 x 10.5 cm
- Net weight: 0.0522 kg
- Gross weight: 0.2275 kg
- Tare weight: 0.1753 kg
- GTIN: 2 69 23410 72455 8
- Number of consumer packages: 3



Issue date 2017-08-11

Version: 5.0.5

12 NC: 8670 001 08911
EAN: 69 23410 72455 4

© 2017 Koninklijke Philips N.V.
All Rights reserved.

Specifications are subject to change without notice.
Trademarks are the property of Koninklijke Philips N.V.
or their respective owners.

www.philips.com