



In-ear headphones with mic

- 13.5-mm drivers/closed-back
- In-ear

TX2BK/00

## High-Resolution Sound

Premium drivers with oval sound tubes

The Philips TX2 delivers high resolution sound with extended bass thanks to premium drivers and oval sound tubes. Custom-fit comfy ear caps ensure an immersive experience, while the flat cable keeps you tangle free.

### Benefits

#### Sound technology excellence

- Brass metal ring reduces vibrations for sound clarity
- Hybrid architecture for precise sound and extended bass
- Noise-isolating ear caps to block out ambient noise
- Ultra-lightweight voice coil for extended high frequencies
- High-resolution audio reproduces music in its purest form

#### Supreme comfort

- Choose from 3 pairs of ear caps for the perfect fit

- Ergonomic oval sound tube fits securely and comfortably

#### Design for convenience

- Reinforced cable relief enhances durability and connectivity
- Tangle-free flat cable with slider for convenience on the go

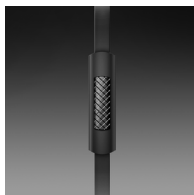
#### Stay connected to your music and friends

- Built-in microphone switches you from music to phone calls

# PHILIPS

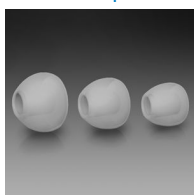
## Features

### Built-in microphone



The built-in microphone lets you switch from listening to music to taking phone calls - easily, so you'll always stay connected with what matters most to you.

### Choice of 3 pairs of ear caps



Ear caps come in a choice of 3 sizes – small, medium and large – for a personalised and perfect fit.

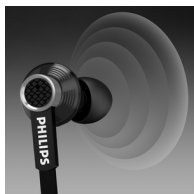
### Brass metal ring

The lightweight brass metal ring reduces vibration to ensure sound clarity and precision.

### Ergonomic oval sound tube

The oval shape of the sound tube came about based on extensive research on the human ear. Designed to fit any ear comfortably, the ergonomic shape ensures optimal fit and comfort for total music enjoyment.

### Hybrid architecture



Hybrid architecture utilises high-power neodymium magnets for high-precision sound and enhanced bass impact. Its hybrid form factor utilises larger 13.5-mm

speakers in a compact headphone insert, which results in higher-quality sound along with true comfort.

### Noise-isolating ear caps



Noise-isolating ear caps block out the ambient noise so that you can immerse yourself fully in your music, without any disturbance.

### Reinforced cable relief

To extend the life of your headphones, a soft rubber relief between them and the cable protects the connection from damage through repeated bending.

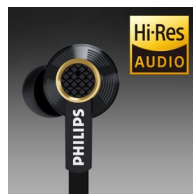
### Tangle-free flat cable

Flat cable ensures that your cord stays smooth and tangle-free - always. The cable slide adds stylish ease and convenience on the go.

### Ultra-lightweight voice coil

The ultra-lightweight voice coil is attached to the speaker, providing the motive force via a magnetic field reaction to the current that passes through it. Because the moving parts of a speaker must be of low mass to accurately reproduce high-frequency sounds, voice coils need to be as lightweight as possible.

### High-resolution audio



High-Resolution Audio offers the best in audio performance, reproducing original studio master recordings more faithfully than 16-bit/44.1-kHz CD formats. This uncompromising quality makes High-Resolution Audio the best sound companion for the music lover. These headphones meet the stringent standards required for the Hi-Res Audio stamp of quality.

## Specifications

Please note that this is a pre-sales leaflet. The contents of this leaflet reflect the best of our knowledge per date and country mentioned above. The contents of this leaflet are subject to change without notice. Philips does not accept any liability as to the contents of this leaflet.

### Sound

Acoustic system	closed
Diaphragm	Mylar
Frequency response	6 - 40,000 Hz
Magnet type	Neodymium
Voice coil	CCAW
Sensitivity	108 dB
Speaker diameter	13.5 mm
Maximum power input	30 mW
Impedance	32 ohm

### Design

Colour	Black
--------	-------

### Connectivity

Cable Connection	symmetrical
Cable length	1.2 m

### Compatible with:

iPhone®, BlackBerry®, HTC, LG, MOTOROLA, NOKIA\*, SAMSUNG\*, SONY \* Only for latest models. Extra connector available through customer support for Sony Ericsson, older models from NOKIA and SAMSUNG

### Type of cable Connector Finishing of connector

Copper  
3.5 mm  
Gold-plated

### Packaging dimensions

Height	17.5 cm
Width	9.5 cm
Depth	2.6 cm
Net weight	0.0174 kg
Gross weight	0.064 kg
Tare weight	0.0466 kg
EAN	69 23410 72455 4

Type of shelf placement	Both
Number of products included	1
Packaging type	Carton

#### Outer Carton

Length	38 cm
Width	19.3 cm
Height	25 cm
Net weight	0.4176 kg
Gross weight	2.108 kg
Tare weight	1.6904 kg
GTIN	1 69 23410 72455 1
Number of consumer packages	24

#### Inner Carton

Length	18 cm
Width	8.6 cm
Height	10.5 cm
Net weight	0.0522 kg
Gross weight	0.2275 kg
Tare weight	0.1753 kg
GTIN	2 69 23410 72455 8
Number of consumer packages	3



data subject to change  
2018, February 18

Version: 5.0.5  
EAN: 6923410724554

© 2018 Koninklijke Philips N.V.  
All rights reserved.

Specifications are subject to change without notice. Trademarks are the property of Koninklijke Philips N.V. or their respective owners.

[www.philips.com](http://www.philips.com)