



Headphones with mic

- High-resolution audio
- In-ear
- Ultra-soft silicone caps
- Flat cable

S2KB/00

High fidelity, premium quality

Wherever you go

Philips Fidelio S2 headphones are precisely engineered to deliver natural, balanced sound, revealing every detail as the artist intended. Amazing sound presented in a lightweight yet durable design for true comfort and pleasure on the go.

Benefits

Designed for precision

- High-resolution audio reproduces music in its purest form
- High-powered 13.5-mm neodymium drivers for exceptional sound
- Engineered metal housing reduces vibration and resonance
- Handpicked, tuned and tested drivers for a precise match
- Layered motion control drivers for refined high frequencies

Listen in comfort

- Copper alloy outer housing for lightweight durability
- Ergonomic earphones fit perfectly while dispersing pressure

- Anti-scratch matt coating
- 2 Comply™ Foam Tips for a comfy fit and noise isolation
- Ultra-soft silicone tips in 5 sizes for a custom, snug fit

Created for convenience

- Switch between music and calls with in-line control and mic
- Durable flat cable keeps your headphones tangle-free
- Protective pouch to store your headphones when not in use



PHILIPS

Features

High-resolution audio

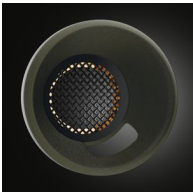
High-resolution audio offers the best in audio performance, reproducing original studio master recordings more faithfully than 16 bit/44.1 kHz CD formats. This uncompromising quality makes high-resolution audio the best sound companion for the music lover. Fidelio headphones meet the stringent standards required for the Hi-Res Audio stamp of quality. Whether you are enjoying your Hi-Res collection or a more traditional music source, the smooth extended high frequencies of the Fidelio headphone range help you get more from your music.

13.5-mm neodymium drivers

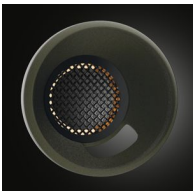


Each speaker driver is carefully handpicked, tuned and tested before being paired to ensure delivery of the most balanced, natural sound. The 13.5-mm drivers utilise high-power neodymium magnets to deliver deep bass impact, transparent mid-range and refined high frequencies.

Copper alloy outer housing



Engineered metal housing



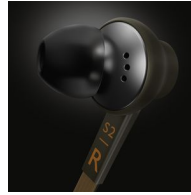
The metal housing is meticulously engineered to reduce resonance and vibration, delivering authentically precise sound marked by incredible sound detail.

Handpicked, tuned and tested



Each speaker driver is specially tested and handpicked for ideal stereo pairs, together delivering superbly deep bass, transparent mid-range and refined high frequencies.

Ergonomic earphones



The Fidelio S2 earphones are ergonomically shaped to fit your ear's natural curve, all the while dispersing pressure. Its lightweight copper alloy construction and superior materials ensure long-lasting comfort, allowing you to experience true comfort as you enjoy your music to the fullest.

In-line control and mic



The Fidelio S2 in-ear headphones feature an in-line remote and microphone so you can switch easily between your music and calls. Stay connected with important people – and your music, always.

Soft and durable flat cable



Every aspect of your Fidelio in-ear headphones is carefully designed for an exceptional music enjoyment experience – always. Their innovative dual-colour flat cable – made from high-quality, durable yet stylish material – has anti-tangle properties, allowing you to freely get into your music on the go, without spending any time and energy sorting out the cable. Smart, smooth and easy all the way.

Anti-scratch matt coating

The ergonomically designed ear shell is protected by a matt finish, which imparts not only a premium look and feel but also durability and resistance to scratches. The protective coating makes the earphones easy to clean and even easier to bring along with you anywhere you go. Just give them a wipe and they'll look as good as new.

2 pairs of Comply™ Foam Tips

Enhance your listening experience with the Comply® Foam Tips, which come in 2 custom options. The snug S-series tips provide stay-in-place fit coupled with amazing all-day comfort, while the Ts-series ensures excellent noise insulation, allowing you to tune out from the world and into your music.

5 sizes of soft silicone tips



The Fidelio S2 in-ear headphones come with 5 pairs of acoustically-sealed silicone tips to ensure a snug fit as well as longer lasting comfort.

Protective pouch included



custom-moulded EVA, to keep your Fidelio headphones safe – and in style – always.

Your Fidelio in-ear headphones come with their very own stylish and protective carrying pouch. You can rely on this durable pouch, made from

Specifications

Please note that this is a pre-sales leaflet. The contents of this leaflet reflect the best of our knowledge per date and country mentioned above. The contents of this leaflet are subject to change without notice. Philips does not accept any liability as to the contents of this leaflet.

Sound

Acoustic system	Semi-closed
Frequency response	5–40 000 Hz
Sensitivity	107 dB
Speaker diameter	13.5 mm
Maximum power input	40 mW
Impedance	22 ohm

Compatible with:

iPhone®, BlackBerry®, HTC, LG, MOTOROLA, Sony, Nokia*, SAMSUNG*. *Extra connector available through customer support for Sony Ericsson and older models from NOKIA and SAMSUNG

Accessories

Storage pouch	Yes
---------------	-----

Connectivity

Cable Connection	3.5 mm 4 pole (1.2 M)
------------------	-----------------------



data subject to change
2017, July 29

Version: 7.0.3
EAN: 6923410726053

© 2017 Koninklijke Philips N.V.
All rights reserved.

Specifications are subject to change without notice. Trademarks are the property of Koninklijke Philips N.V. or their respective owners.

www.philips.com