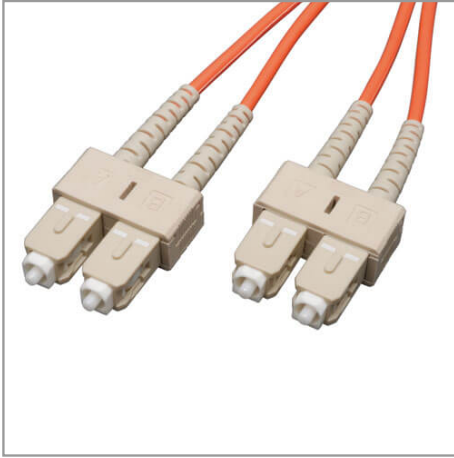


Duplex Multimode 62.5/125 Fiber Patch Cable (SC/SC), 46M (150 ft.)

MODEL NUMBER: N306-46M



Highlights

- Premium PVC 62.5/125µm multimode patch cables
- Attenuation loss meets or exceeds the latest industry standards

System Requirements

- Any fiber optic hardware or NIC card requiring multimode duplex cable with SC/SC connectors

Package Includes

- 46 Meter (150ft) duplex MMF cable SC/SC 62.5/125 fiber

Description

This multimode duplex fiber optic SC/SC Ethernet cable is manufactured from 62.5/125 zipcord fiber. The cable has SC connectors on each end, a PVC jacket and is FDDI and OFNR rated. Duplex multimode fiber is most commonly used in LAN applications.

Features

- Manufactured from 62.5/125 duplex (zipcord) fiber
- PVC jacket
- Length: 46 Meter (150ft) Connectors: 2 SC connectors on each end
- Insertion loss testing performed on every connector (0.2db typical) and provided with cable
- Beveled edge on ends of glass makes insertion of plug a breeze
- Fiber made from glass (not a polymer)
- Fiber optic distributed data interface (FDDI) rated
- OFNR (riser rated)

Specifications

OVERVIEW	
UPC Code	037332135131
Technology	Multimode
Optical Mode	OM1
PHYSICAL	
Cable Jacket Color	Orange
Connector Color	White



Powering Business Worldwide



Cable Jacket Material	LSZH
Cable Jacket Rating	OFNR
Clad Diameter (microns)	125
Core Diameter (microns)	62.5
Number of Fibers	2
Cable Length (ft.)	150.9
Cable Length (m)	46.01
Cable Length (in.)	1811
Minimum Bend Radius	20 mm (Dynamic); 10 mm (Static)
Shipping Dimensions (hwd / in.)	12.00 x 10.50 x 0.50
Shipping Dimensions (hwd / cm)	30.48 x 26.67 x 1.27
Shipping Weight (lbs.)	0.80
Shipping Weight (kg)	0.36
Fiber Cable Length	46M (150.9 ft)
ENVIRONMENTAL	
Operating Temperature Range	-4° to 140°F (-20° to 60°C)
Storage Temperature Range	-4° to 140°F (-20° to 60°C)
Operating Humidity Range	5% to 85% RH, Non-Condensing
Storage Humidity Range	35% to 65% RH, Non-Condensing
COMMUNICATIONS	
Network Compatibility	1 Gbps (Gigabit); 10 Gbps
Attenuation @ 850NM	3.0 dB/km
Insertion Loss	0.20 dB
CONNECTIONS	
Side A - Connector 1	SC DUPLEX (MALE)
Side B - Connector 1	SC DUPLEX (MALE)
Endface Polish	PC
FEATURES & SPECIFICATIONS	
Push/Pull Tabs	No
Breakout	No
Trunk	No
STANDARDS & COMPLIANCE	
Product Compliance	RoHS; REACH



Powering Business Worldwide



WARRANTY & SUPPORT	
Product Warranty Period (Worldwide)	Lifetime limited warranty

1000 Eaton Boulevard
Cleveland, OH 44122
United States
<https://tripplite.eaton.com>

© 2024 Eaton. All Rights Reserved.
Eaton is a registered trademark. All other trademarks
are the property of their respective owners.