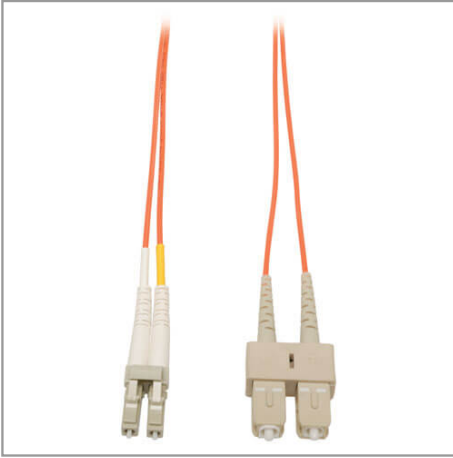


## Duplex Multimode 62.5/125 Fiber Patch Cable (LC/SC), 15M (50 ft.)

MODEL NUMBER: N316-15M



### Highlights

- Premium PVC 62.5/125µm multimode patch cables
- Attenuation loss meets or exceeds the latest industry standards

### System Requirements

- Any fiber optic hardware or NIC card requiring multimode duplex cable with SC/LC connectors

### Package Includes

- 15 meter ( 50ft ) Duplex MMF Cable LC/SC 62.5/125 Fiber

### Description

This multimode duplex fiber optic SC/LC Ethernet cable is manufactured from 62.5/125 zipcord fiber. The cable has LC to SC connectors, a PVC jacket and is FDDI and OFNR rated. Duplex multimode fiber is most commonly used in LAN applications.

### Features

- Manufactured from 62.5/125 duplex (zipcord) fiber
- PVC jacket
- Length: 15-meter (50ft) Connectors: 2 SC/LC connectors on each end
- Insertion loss testing performed on every connector (0.2db typical) and provided with cable
- Beveled edge on ends of glass makes insertion of plug a breeze
- Fiber made from glass (not a polymer)

## Specifications

OVERVIEW	
UPC Code	037332122612
Technology	Multimode
Optical Mode	OM1
PHYSICAL	
Cable Jacket Color	Orange
Connector Color	White; Beige
Cable Jacket Material	LSZH
Cable Jacket Rating	OFNR



Powering Business Worldwide



Clad Diameter (microns)	125
Core Diameter (microns)	62.5
Number of Fibers	2
Cable Length (ft.)	49.2
Cable Length (m)	15.00
Cable Length (in.)	590.6
Minimum Bend Radius	20 mm (Dynamic); 10 mm (Static)
Shipping Dimensions (hwd / in.)	9.00 x 7.00 x 0.75
Shipping Dimensions (hwd / cm)	22.86 x 17.78 x 1.90
Shipping Weight (lbs.)	0.18
Shipping Weight (kg)	0.08
Fiber Cable Length	15M (49.2 ft)
<b>ENVIRONMENTAL</b>	
Operating Temperature Range	-4° to 140°F (-20° to 60°C)
Storage Temperature Range	-4° to 140°F (-20° to 60°C)
Operating Humidity Range	5% to 85% RH, Non-Condensing
Storage Humidity Range	35% to 65% RH, Non-Condensing
<b>COMMUNICATIONS</b>	
Network Compatibility	1 Gbps (Gigabit); 10 Gbps
Attenuation @ 850NM	3.0 dB/km
Insertion Loss	LC 0.20 dB; SC 0.20 dB
<b>CONNECTIONS</b>	
Side A - Connector 1	LC DUPLEX (MALE)
Side B - Connector 1	SC DUPLEX (MALE)
Endface Polish	PC
<b>FEATURES &amp; SPECIFICATIONS</b>	
Push/Pull Tabs	No
Breakout	No
Trunk	No
<b>STANDARDS &amp; COMPLIANCE</b>	
Product Compliance	RoHS; REACH
<b>WARRANTY &amp; SUPPORT</b>	



Powering Business Worldwide



Product Warranty Period (Worldwide)	Lifetime limited warranty
--	---------------------------

1000 Eaton Boulevard  
Cleveland, OH 44122  
United States  
<https://tripplite.eaton.com>

© 2024 Eaton. All Rights Reserved.  
Eaton is a registered trademark. All other trademarks  
are the property of their respective owners.