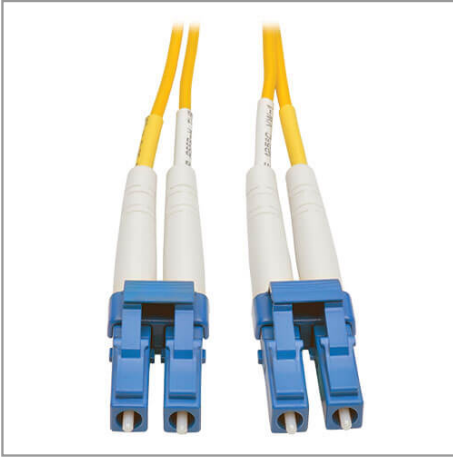


Duplex Singlemode 9/125 Fiber Patch Cable (LC/LC), 10M (33 ft.)

MODEL NUMBER: N370-10M



Highlights

- Premium PVC 9/125 micron singlemode patch cables
- Attenuation loss meets or exceeds the latest industry standards
- Twice the bandwidth throughput of multimode cable

System Requirements

- Any fiber optic hardware or NIC card requiring singlemode duplex cable with LC/LC connectors

Package Includes

- 10-meter (30-33ft) Duplex Singlemode Fiber Patch Cable, LC/LC

Description

Singlemode duplex fiber optic LC/LC Ethernet cable is manufactured from 9/125 zipcord fiber. The cable has LC connectors on one end, LC connectors on the other, a PVC jacket, and is FDDI and OFNR rated. Duplex singlemode fiber is most commonly used in LAN applications.

Features

- Manufactured from 9/125 duplex (zipcord) fiber
- PVC jacket
- Length: 10M (32.8-ft.) Connectors: 2 LC and 2 LC connectors on each end
- Insertion loss testing performed on every connector (0.2db typical) and provided with cable
- Beveled edge on ends of glass makes insertion of plug a breeze
- Fiber made from glass (not a polymer)
- Fiber optic distributed data interface (FDDI) rated
- OFNR (riser rated)

Specifications

OVERVIEW	
UPC Code	037332122803
Technology	Singlemode
Optical Mode	OS2
PHYSICAL	
Cable Jacket Color	Yellow
Connector Color	Blue; White



Powering Business Worldwide



Cable Jacket Material	LSZH
Cable Jacket Rating	OFNR
Clad Diameter (microns)	125
Core Diameter (microns)	9
Number of Fibers	2
Cable Length (ft.)	32.8
Cable Length (m)	10.00
Cable Length (in.)	393.7
Minimum Bend Radius	20 mm (Dynamic); 10 mm (Static)
Shipping Dimensions (hwd / in.)	9.00 x 7.00 x 0.50
Shipping Dimensions (hwd / cm)	22.86 x 17.78 x 1.27
Shipping Weight (lbs.)	0.19
Shipping Weight (kg)	0.09
Fiber Cable Length	10M (32.8 ft)
ENVIRONMENTAL	
Operating Temperature Range	-4° to 140°F (-20° to 60°C)
Storage Temperature Range	-4° to 140°F (-20° to 60°C)
Operating Humidity Range	5% to 85% RH, Non-Condensing
Storage Humidity Range	35% to 65% RH, Non-Condensing
COMMUNICATIONS	
Network Compatibility	1 Gbps (Gigabit); 10 Gbps; 25 Gbps; 40 Gbps; 100 Gbps; 400 Gbps
Attenuation @ 1310NM	0.36 dB/km
Attenuation @ 1550NM	0.22 dB/km
Insertion Loss	0.30 dB
CONNECTIONS	
Side A - Connector 1	LC DUPLEX (MALE)
Side B - Connector 1	LC DUPLEX (MALE)
Endface Polish	UPC
FEATURES & SPECIFICATIONS	
Push/Pull Tabs	No
Breakout	No
Trunk	No
STANDARDS & COMPLIANCE	



Powering Business Worldwide



Product Compliance	RoHS; REACH
WARRANTY & SUPPORT	
Product Warranty Period (Worldwide)	Lifetime limited warranty

1000 Eaton Boulevard
Cleveland, OH 44122
United States
<https://tripplite.eaton.com>

© 2024 Eaton. All Rights Reserved.
Eaton is a registered trademark. All other trademarks
are the property of their respective owners.