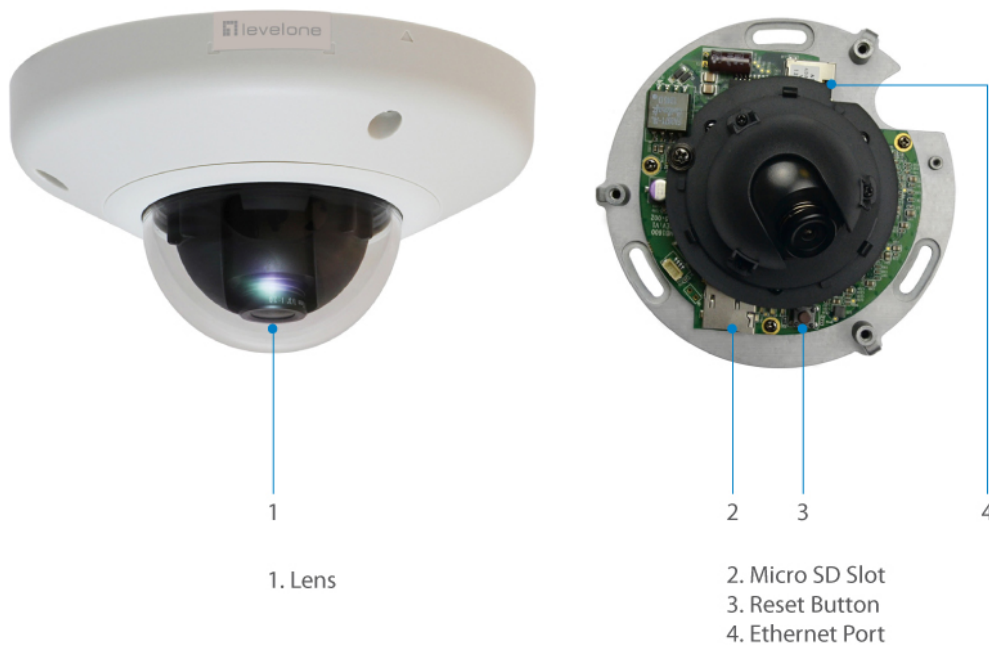




FCS-3054 Version: 1

HUBBLE Fixed Dome IP Network Camera, 3-Megapixel, 802.3af PoE, Vandalproof



Key Features

- Built-in Micro SDHC/SDXC card slot for local storage
- 3-Megapixel high-definition resolution
- Vandal-proof IK08-rated housing
- Video compression: H.264, MJPEG
- Power support: PoE (IEEE 802.3af)
- Free surveillance and CMS (Central Management System) software packages with 64-channel license



Specifications

System Specifications

Standards & Protocols:

IEEE 802.3 10-BASE-T, Ethernet
IEEE 802.3u 100-BASE-TX, Fast Ethernet
IEEE 802.3af Power over Ethernet (PoE)
IEEE 802.1X Network Access Control
TCP, UDP, HTTP, HTTPS, DHCP, PPPoE, RTP, RTSP, IPv6, DNS, DDNS, NTP, ICMP, ARP, IGMP, SMTP, FTP, UPnP, SNMP, Bonjour

Image Sensor:

3-Megapixel 1/3.2" Progressive Scan CMOS

Lens:

Fixed focal, Fixed iris, Fixed focus, f2.93mm , F2.0

Port:

1 x RJ-45 10/100 Mbps PoE port
1 x MicroSDHC/ MicroSDXC card slot

Button/Knob:

Reset Button

Indicator:

Power

Shutter Time:

1/5 ~ 1/10,000 sec

Angle of View:

83.3°

Pan/Tilt/Zoom:

Digital Zoom to very high detail available on Software

Video Compression:

H.264 / MJPEG

Resolution:

3M(2048 x 1536)

Output Video Format:

RAW

Power Input:

802.3af PoE

Power Consumption:

PoE Class 1 (IEEE802.3af) / 2.91W

Data Rate:

10/100Mbps

Storage Capacity:

SD/MicroSD memory card of up to 64GB

Features

General:

Backup: MicroSDHC /MicroSDXC card slot for local storage

Video:

Image Setting: - Adjustable image size, quality and bit rate
- Configurable brightness, sharpness, contrast, saturation, white balance and exposure
- AGC/AWB/AES
- Back Light Compensation (BLC)
- 2D Noise Reduction (2DNR)
Streaming: Up to 2 video streams

Performance

Frame Rate (fps):

15 fps at 2048 x 1536; 30 fps at 1920 x 1080; 30 fps at 1280 x 720; 30 fps at 640 x 480; 15 fps at 320 x 240

Minimum illumination:

Color: 0.1 lux at F2.0

Environment

Operating Temperature (°C):

Operating: -10°C ~ 50°C

Operating Humidity (Non-condensing):

Operating: 10% ~ 85%

Installation:

Wall/Ceiling Mount

Physical Specifications

Dimensions (W x D x H mm):

110 x 58 x 110

Weight (g):

202 g

Approval and Compliance

EMI/EMS:

CE, RoHS, FCC, IK08

Environmental Test:

Vandal Resistant IK08-rated

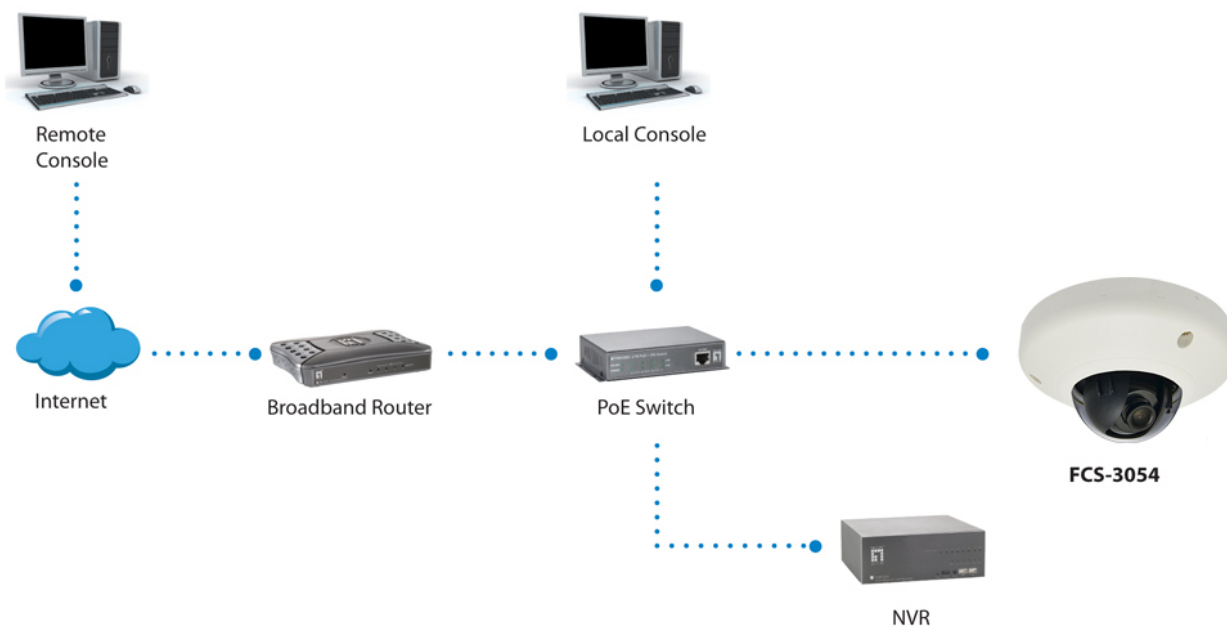
Others

Supported Browsers:

Microsoft Windows 8/7/Vista/XP



Diagram



Order Information

FCS-3054

Package Contents

FCS-3054
Screw Kit
Quick Installation Guide
Resource CD (User Manual, Utility, QIG)

No liability or responsibility for any errors or omissions in the content.
Specifications are subject to change without notice.
All mentioned brand names are registered trademarks and property of their owners.
Copyright © Digital Data Communications GmbH, Germany. All Rights Reserved.