

CHOOSE EIZO FLEXSCAN.
WORK BETTER.



FLEXSCAN: THE BEST CHOICE FOR YOUR OFFICE

THE RIGHT SOLUTION FOR EVERY NEED



EcoView Ultra-Slim

The EIZO Ultra-slim monitors are a true eye-catcher on any desk with their stylish design. Featuring a bezel of just 1 mm, they are also ideal for multiple-monitor setups.

EcoView 4K Ultra HD

The impressive resolution of the EIZO 4K Ultra HD monitors makes them your first choice for CAD, office and video applications.

EcoView Slim

The Slim series of monitors is an attractive addition to any office, featuring an impressive array of 22-inch, 23-inch and 24-inch, as well as a 27-inch with a square pixel aspect ratio.

Square

EIZO's square monitors are your ideal choice for monitors with a compact design in the traditional 5:4 or 4:3 formats.

Touch

A multitouch LCD from EIZO is a perfect choice for production halls, reception areas and points of sale.

Industry, financial sector, document imaging or CAD? Home office or open space office? The FlexScan product line is the centerpiece of EIZO's portfolio. This line has the right monitor for every office environment. No matter which EIZO monitor you select, you always enjoy excellent ergonomics, outstanding cost-efficiency and first-class image quality. On top of that, the monitors come with a full five-year manufacturer's warranty, including on-site replacement service.

ULTRA-SLIM BEZELS, UNLIMITED IMAGE QUALITY



27"

EV2780 with IPS-Panel
EV2750 with IPS-Panel
16:9 format
Resolution: 2560×1440 pixels

Just 1 mm bezel

24,1"

EV2456 with IPS-Panel
16:10 format
Resolution: 1920×1200 pixels

23,8"

EV2451 with IPS-Panel
16:9 format
Resolution: 1920×1080 pixels

24,1"

EV2455 with IPS-Panel
16:10 format
Resolution: 1920×1200 pixels

23,8"

EV2450 with IPS-Panel
16:9 format
Resolution: 1920×1080 pixels

Ultra-slim. Ultra-smooth!

EIZO's Ultra-slim monitors add a sleek touch to every office, thanks to their stylish design and 1-mm ultra-slim bezels. And we're not referring only to a straight-on view. Their thin design and even the smart looking backside attracts everyone's attention. The EV2780, EV2750, EV2456, and EV2451 models also offer a fully flat front surface with integrated sensor buttons.

The Ultra-slim models feature first-class image quality, and the nearly invisible bezel makes them well-suited for multiple monitor setups. But also on their own they perform outstanding. The EV2456 and EV2451 models also include a cable cover in matching colors, so your desk remains clean and organized. The cover conceals the cords and cables, leading them down the stand to the desktop surface.



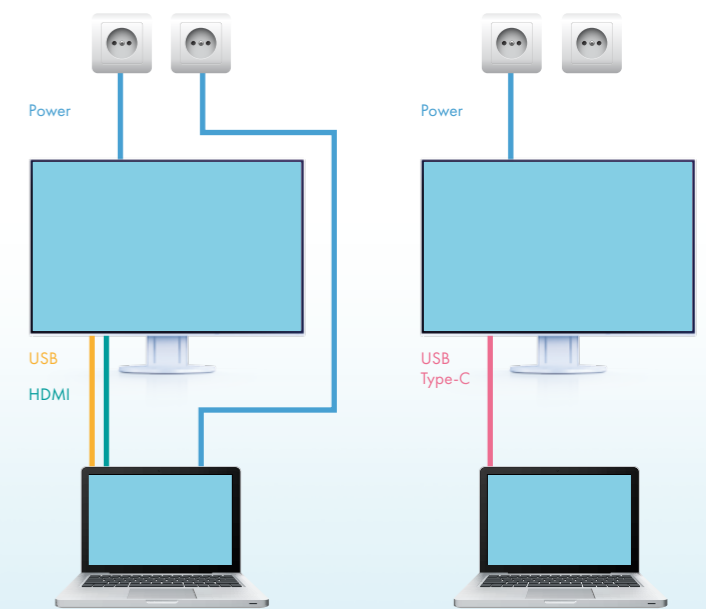
Back of the EV2456

Steady viewing angle with IPS panel

The Ultra-slim monitors with their IPS panels have stable viewing angles and display colors brilliantly, offering excellent image quality whether you're reading texts, editing spreadsheets or viewing images.

USB Type-C with Power Delivery

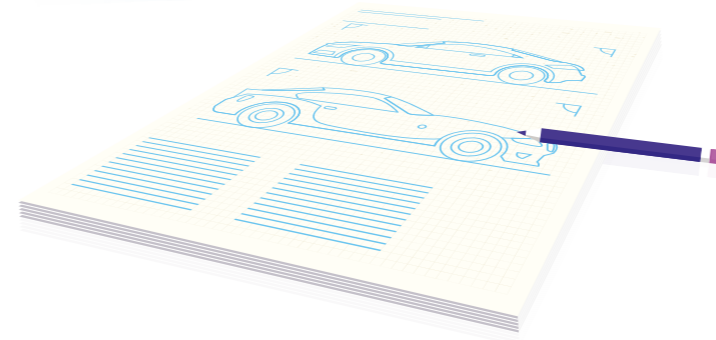
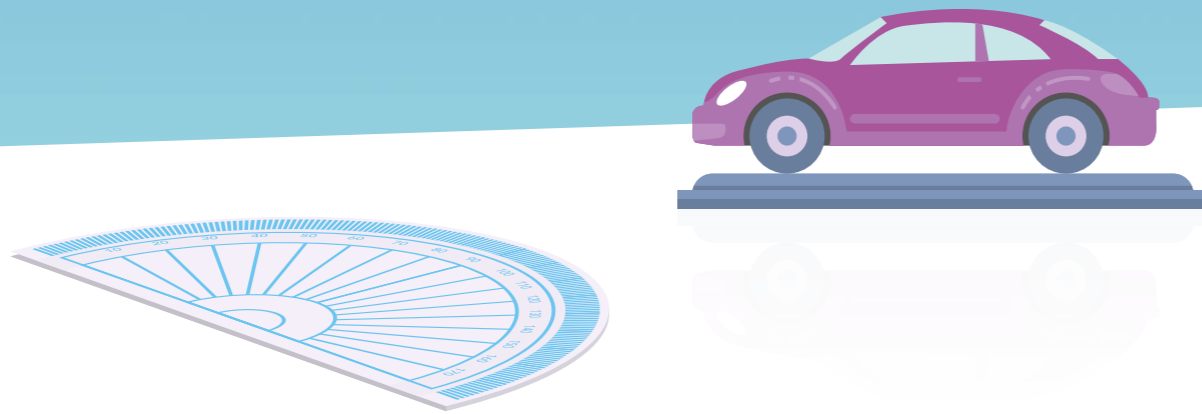
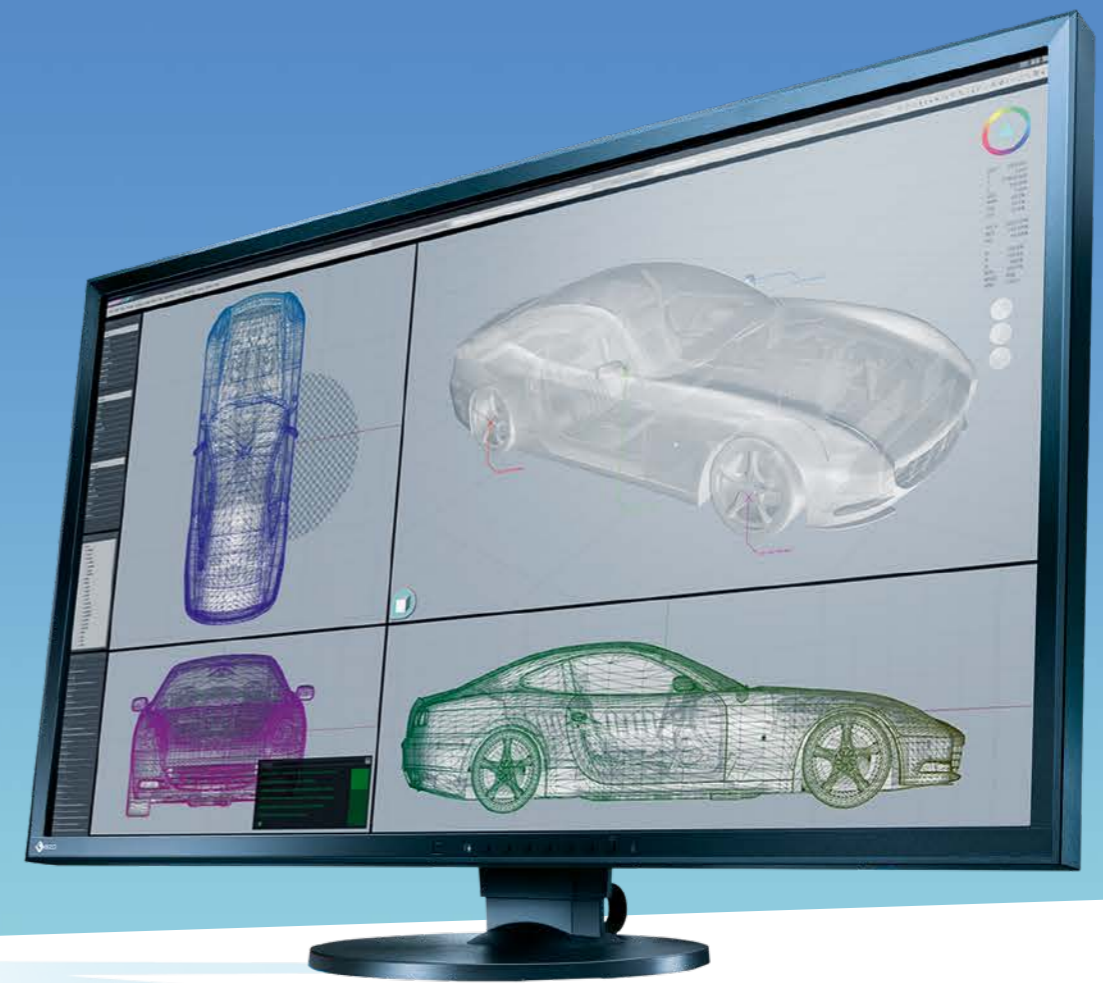
The FlexScan EV2780 comes with a USB Type-C port. A single USB Type-C cable supports both video and audio signals, transfers data and charges a laptop or smartphone all at once. Very efficient: as the USB Type-C input uses the monitor's power supply and no external AC adapter is necessary.



Power supply without USB Type-C

Power supply with USB Type-C

HIGH RESOLUTION, PRECISE DISPLAY



31,5"
EV3237 with IPS-Panel
16:9 format
Resolution: 3840x2160 pixels

4K UHD
3840x2160

A better view for better work

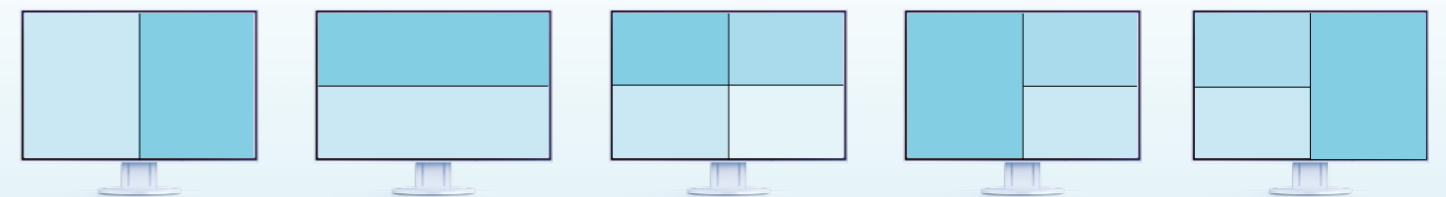
Whether it is CAD, office or video applications, the FlexScan EV3237 with its 4K ultra HD resolution and 60 Hz refresh rate supports your work with its extraordinary display quality. The monitor achieves perfect color-tones and smooth curves by processing 8-bit signals with 256 tones per channel in an internal 10-bit look-up-table with 1021 tones. Thanks to a native resolution of 3840x2160 pixels and 140 dpi (dots per inch), the innovative 31.5-inch monitor presents texts and graphics clearer and more precisely than ever before.

More flexibility thanks to a variety of connections

The EV3237 4K monitor excels thanks to its two DisplayPort connections (version 1.2), one HDMI and one DVI Dual Link connection. Different picture-by-picture configurations make it possible to divide the screen into two, three or even four sections. Both DisplayPorts support a 3840x2160 resolution with 60 Hz.

Convenient multitasking with PbyP/PinP

Picture by Picture (PbyP) is a feature that allows you to view data from multiple signal sources on a single screen simultaneously. Picture in Picture (PinP) allows you to display a small separate screen from a second signal source within the monitor. This allows you to effectively multitask such as viewing a video conference while working in other applications.



FOR WIDE-SCREEN FANS

FOR SQUARE FANS

FOR INTUITIVE USERS



26,5"

EV2730Q with IPS-Panel
1:1 format
Resolution: 1920×1920 pixels

24,1"

EV2416W with TN-Panel
16:10 format
Resolution: 1920×1200 pixels

23"

EV2316W with TN-Panel
16:9 format
Resolution: 1920×1080 pixels

22"

EV2216W with TN-Panel
16:10 format
Resolution: 1680×1050 pixels

21,3"

S2133 with IPS-Panel
4:3 format
Resolution: 1600×1200 pixels

19"

S1934 with IPS-Panel
S1923 with VA-Panel
5:4 format
Resolution: 1280×1024 pixels

23"

T2381W with IPS-Panel
16:9 format
Resolution: 1920×1080 pixels

Wide all around

The EV2730Q is wide all around. The unique 1920×1920 resolution provides users with 78% more pixels compared with a standard wide screen 1920×1080 monitor. The extended vertical space is convenient for displaying large amounts of information in long windows, reducing the need for scrolling and providing a more efficient view of data.

And regardless of the angle from which you view the screen, you always enjoy first-class image quality. The EV2730Q model comes with a very high quality IPS panel. This panel displays colors in a realistic fashion and has stable viewing angles.



Impressive working comfort

You're guaranteed to enjoy work more and work more comfortably with the impressive image quality and ergonomics of the EcoView Slim range of monitors. All three monitors feature energy-efficient EcoView functions and power-saving LED backlighting, enabling you to benefit from optimum brightness at all times.

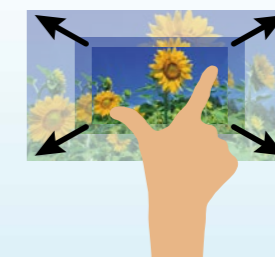
With display sizes ranging from 22 inches, 23 inches, to 24 inches, you can find the right monitor for every application. All models offer a variety of connectivity options, including DisplayPort, DVI-D, D-Sub, and a USB hub, and they are equipped with TN panels. The EIZO UpView feature minimizes the wash-out effect of the colors in situations where the user has to look up at the screen.

Square quality

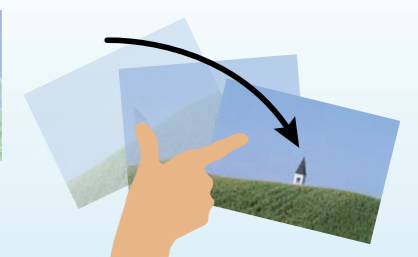
Whenever you need monitors in traditional 5:4 or 4:3 format, EIZO's square monitors – FlexScan S2133, S1934 and S1923 – are your ideal choice. These models win over users with their top image quality in a compact design.

High-quality, agile

Thanks to its intuitive operation, the multi-touch monitor is ideally suited for applications in production halls, reception areas and at points of sale. You can use your finger or a touch pen to operate the entire surface. You can intuitively tap, drag, pinch, spin, and zoom in and out on content with your fingers instead of a mouse and keyboard. Thanks to the drivers included in delivery, the T2381W monitor supports the Windows versions 10, 8.1, and 7.



Zoom-out/-in



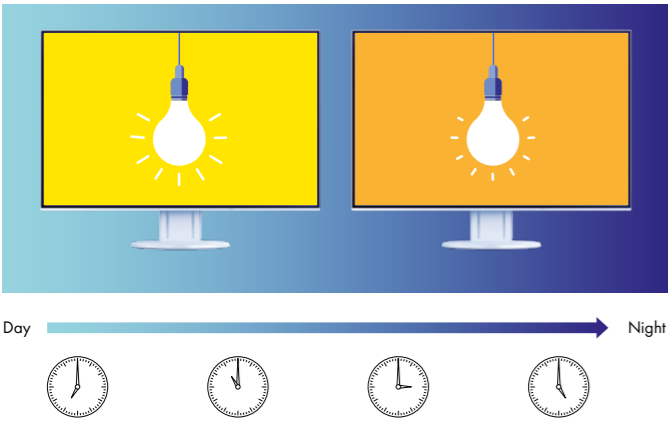
Rotate

SOPHISTICATED ERGONOMICS AGAINST TIRED EYES

EIZO monitors offer clever features that allow you to enjoy a great image while making sure your eyes remain healthy.

Auto EcoView: For the eye of the beholder

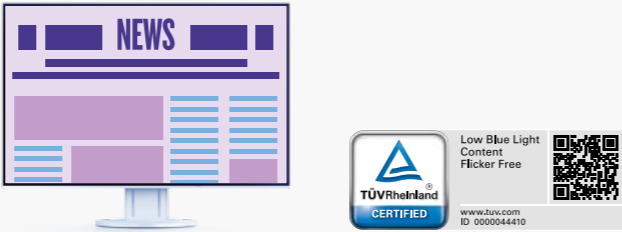
All EIZO FlexScan monitors feature auto EcoView. This feature constantly measures changes in ambient light and automatically optimises the screen to the right brightness levels. This reduces glare or poor perceptibility and decreases eye fatigue. The Ultra-slim monitors and the EV3237 model now feature a unique two-point control panel, which provides the desired screen brightness for the lightest and darkest environment throughout the course of the day.



Paper mode: Less blue, less fatigue

Paper mode simulates the comfortable feeling of reading from printed documents by changing the brightness, contrast, and color temperature of the monitor's panel. The result: Eyes that are significantly less strained by continually switching between the monitor and paper. At the same time, the blue spectrum of light is extremely reduced, too, thanks to the combination of Paper mode and the Auto EcoView brightness setting. Thus, your eyes experience less fatigue – and you experience less stress.

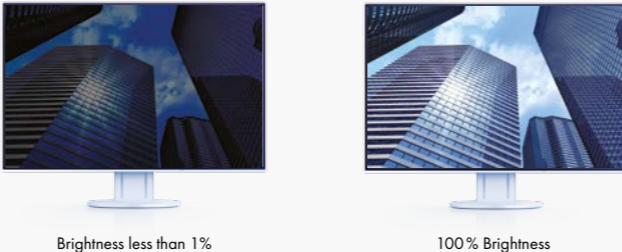
This feature is available with all EcoView models with the exception of the T2381 W.



Hybrid control for flicker-free images without glare

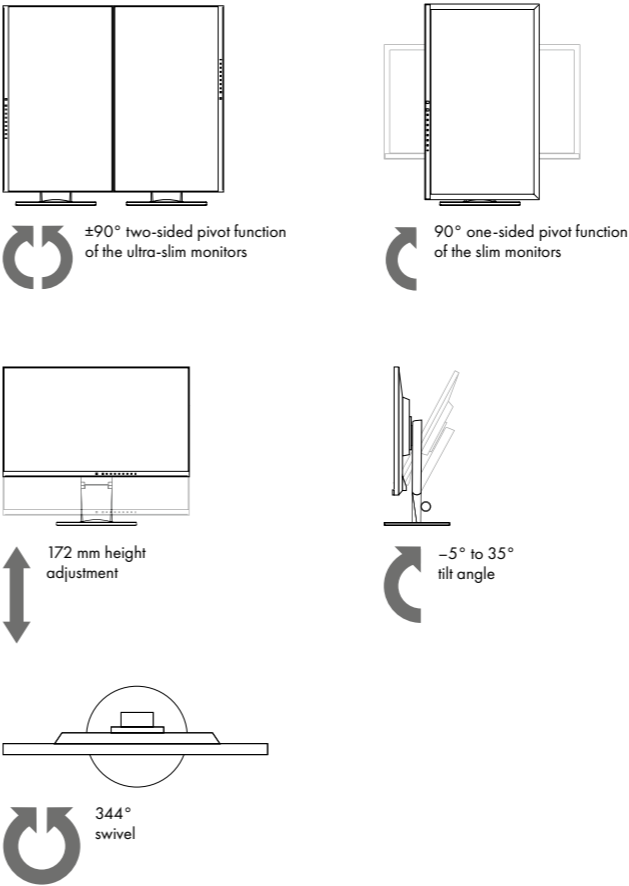
Conventional methods used to control the backlighting on monitors can cause an unpleasant flickering. The EcoView series of monitors use hybrid technology developed by EIZO, meaning they flicker far less in comparison to LED backlit monitors offered by other manufacturers. Thanks to the hybrid control, you can reduce the display brightness to less than 1%, which enables you to work more comfortably in poorly lit environments.

Figures vary slightly according to model.



FlexStand: Flexible screen positioning

Thanks to the highly ergonomic monitor stand of the EcoView models, you can tilt the screen 5° forward or 35° backward, rotate it and lower it to desk-level. Depending on the model, you can rotate the display by 90° into portrait format and adjust the height by up to 172 mm.

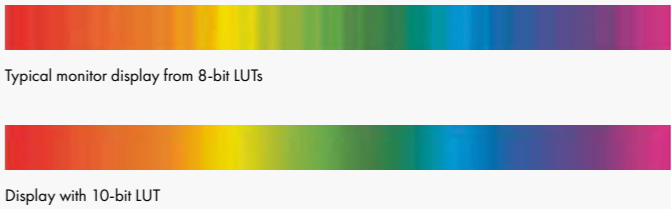


Antireflection coating: More concentration, less reflection

EIZO monitors offer a perfect, non-glare surface that reduces strain on the eyes caused by reflections. Does not apply to T2381 W model.

10-bit LUT: Precise color control

Color reproduction is controlled via an internal 10-bit look-up table (LUT). This enables a more accurate gradation of color information than conventional 8-bit LUTs. Color temperature control allows you to adjust the white balance between 4000 K and 10000 K in 500 K steps. In addition, the color saturation (gain) for RGB colors can be configured separately.



FineContrast modes: Optimum images at the touch of a button

Text documents, images, and films require different color settings in different situations. Whereas other monitors have to be painstakingly configured manually, all FlexScan models offer five FineContrast modes, which can be activated at the touch of a button.

LOWER ENERGY COSTS, REDUCED ENVIRONMENTAL IMPACT

EIZO's EcoView monitors feature many sensors and intelligent features that reduce power consumption to an extremely low value. They reduce energy costs and protect the environment.

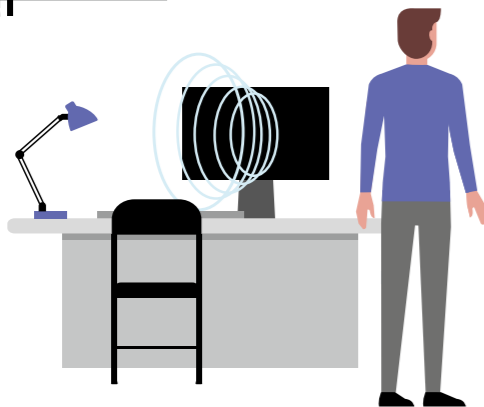
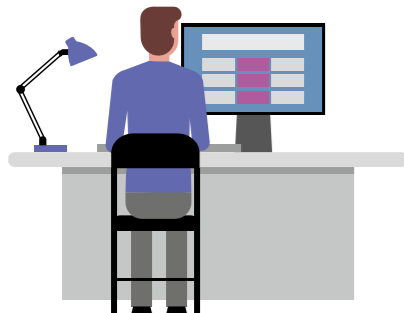
Auto EcoView: Cuts energy costs almost in half

Because EcoView automatically adjusts the brightness of the monitor in line with the surrounding ambient light, you can save up to 50 % in energy compared to monitors that are continually used at full brightness.

EcoView Sense: Optimising power consumption

The EcoView models feature an EcoView sense presence sensor that switches the monitor to energy-efficient mode when you leave your work station and reactivates upon your return.

Not available with the EV2780, EV2750, EV2456, EV2451.



We have conducted our own studies, which have indicated that users spend an average of 29 % of their workday away from their desk. The monitor consumes approximately 0.3 watts when it is in energy-efficient mode during this time.

EcoView Optimizer: Up to 30% cost savings

EcoView Optimizer recognises image content and automatically reduces screen brightness when the content is predominantly dark, thereby lowering power consumption by up to 30%. The signal strength is increased at the same time in order to guarantee image quality.

Does not apply to the square series and the T2381W model.



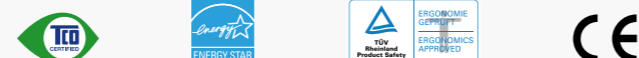
Savings with Auto EcoView, EcoView Sense, and EcoView Optimizer are based on an internal study conducted by EIZO and may vary, depending on the model.

Zero watts. Saving energy by powering down

All FlexScan models have a mechanical power switch that results in zero-watt consumption when the monitor is switched off. Each model uses 0.3 watts or less in standby mode.

Distinguished: Security and environmental sustainability

Most FlexScan models meet the requirements of the TCO 7.0 display standard and correspond to strict international guidelines for ergonomics and energy conservation according to Epa Energy star and TÜV ergonomics.

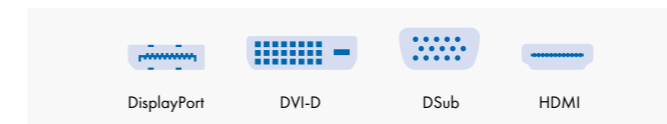


IMPRESSIVE FEATURES FOR GREATER COMFORT

We equip every EIZO monitor with a variety of practical features and connection ports in order to make routine work more comfortable and convenient.

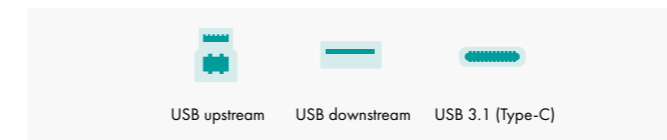
Signal connections*

The rear side of the housing offers a DisplayPort and HDMI, DVI and DSub inputs as well as various connections for digital and analogue signals.



USB

Each model features either a USB 3.1 hub (Type-C), a USB 3.0 hub, or a USB 2.0 for peripheral USB devices.



Sound output*

Two one-watt speakers concealed in the back of the monitor cabinet provide integrated sound without disrupting the design. An integrated headphone connection provides additional comfort.



*Equipment varies depending on the monitor series and the model. Please see the tables starting on page 16 for more information.

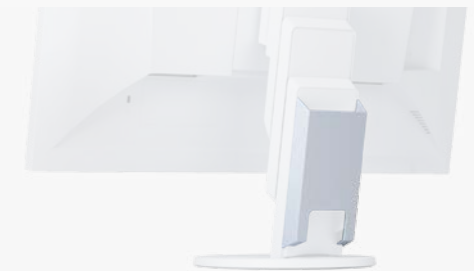
Carry handle*

The built-in carry handle on the back of the monitor makes it easy and safe to carry the monitor when unpacking, setting up, or transporting it from one place to the next.



Cable routing

A cable holder or cable cover ensures a clean desk and prevents messy cabling, depending on the model.



Cable cover

Thin Client mount

There is a Thin Client mount available as an optional accessory for several EcoView monitors. It is easy to mount to the monitor base and is suited for attaching Thin Client systems with VESA mount points.



INTELLIGENT SOFTWARE FOR OPTIMUM WORK

Every FlexScan model comes with relevant EIZO software with impressive functions, helping you to greatly improve your user experience while working at the monitor.

Screen InStyle –
EIZO's new Screen InStyle software allows you to easily manage power, color, brightness and other settings in a single or multiple monitor setup.

Multiple monitor power management:

Simply turn the power off on one monitor and the others will shut off automatically. Alternatively, if your monitors have a presence sensor, then all monitors will switch to power save mode when one monitor no longer detects your presence.



Synchronize screen adjustments:

Screen InStyle will apply any color adjustments you make to one monitor to the others for consistent color across all screens. In addition, any changes detected by the brightness sensor of one monitor will be applied uniformly to your other monitors.

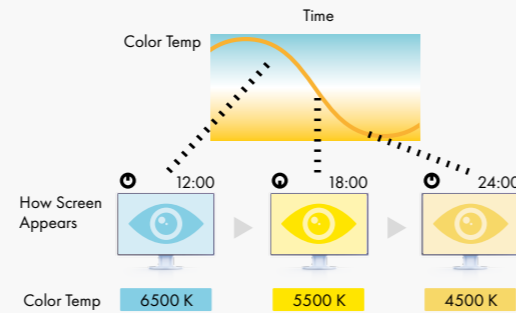


Auto Color mode:

Assign any of the monitor's preset modes to a particular application. When you activate that application then your screen automatically switches to its assigned mode.

Less blue light:

Screen InStyle's Circadian Dimming feature reduces your blue light exposure and the effect it might have on your ability to sleep by lowering the monitor's color temperature as the day progresses.



Administrator control:

Screen InStyle Server is a server application that lets a system administrator control all monitors connected to a computer with Screen InStyle installed. This ensures optimal power saving settings and helps with asset management of the monitors.

Screen InStyle is available for the following models: EV3237, EV2780, EV2750, EV2456, EV2455, EV2451 and EV2450.

ScreenManager Pro – for your personal settings

You make adjustments to your color and EcoView settings via mouse and keyboard instead of the display menu. The multi-monitor matching function also allows you to carry out alignments for all of the FlexScan monitors that are connected to the same computer.

EIZO Monitor Configurator – for network-wide settings

This software allows system administrators to create and distribute monitor configurations through a USB connection. To this end, a monitor's settings can be saved as a XML file and transmitted over the network to the clients for other connected monitors.

EIZO Monitor Configurator is available for Ultra-slim monitors and the EV3237 model.

FLEXSCAN MONITORS AT WORK

Well-known companies around the world rely on the unique quality, range of features and durability of FlexScan monitors. Here are a few of them:

Port of Antwerp, Country: Belgium

Product deployed: EV3237

The port of Antwerp is one of the largest ports in the world, situated on the river Scheldt. The highly complex logistical network of the harbor is laid out on several monitors that visualize high resolution IP cameras, maps, and flowcharts. The multi-functional EV3237 proved to be capable of showing all sorts of images in a very precise way, as well as offering unequalled reliability.



Gasunie Deutschland, Country: Germany

Product deployed: EV2455

Gasunie Deutschland manages, operates, and develops a 3600-kilometer-long natural gas transmission network in northern Germany. All EIZO monitors are incorporated into 12-monitor arrangements at dispatching work stations. Their 1-mm ultra-slim bezel offers an almost frameless display while low heat output and quiet operation are advantageous for multiple screen solutions.



Festo, Country: Germany

Product deployed: EV2450

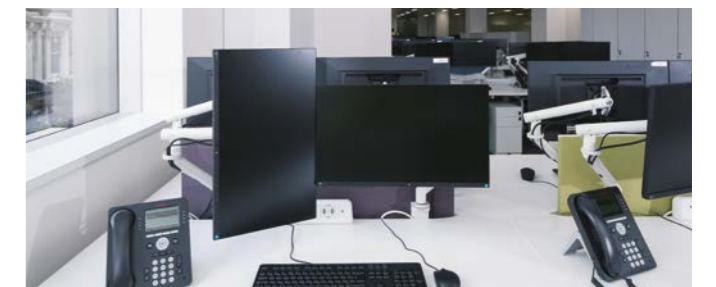
Festo is a global manufacturer of process control and factory automation technology. They use two FlexScan monitors at each work station in their new 12000-square-meter Automation Center at the Esslingen site in Germany. The narrow bezel makes the monitor look almost frameless in the dual-screen solution. In addition, it has a good price-performance ratio and a five-year guarantee spanning the product's entire service life.



Savills, Country: U.K.

Products deployed: EV2316W and EV2450

This global real estate services provider uses FlexScan at its headquarters and regional offices in the U.K. and Europe. Savills opted for FlexScan due to its reduced power consumption, visual ergonomics, and ultra-slim bezels to complement the aesthetics of the office.



SPECIFICATIONS



	EV2780	EV2750	EV2456	EV2455
Cabinet color	black, white	black, white	black, white	light gray, black, white
Panel	Type: IPS Backlight: LED Size: 27"/68.5 cm Native resolution: 2560 x 1440 (16:9 aspect ratio) Additional resolution settings: 1920 x 1200, 1920 x 1080, 1600 x 1200, 1680 x 1050, 1280 x 1024, 1024 x 768, 800 x 600, 720 x 400, 640 x 480, Full Screen or 1:1 Display size (H x V): 596.7 x 335.7 mm Pixel pitch: 0.233 x 0.233 mm Display colors: 16.77 million from a palette of 1.06 billion Viewing angles (H/V, typ.): 178°, 178° Brightness (typical): 350 cd/m ² Contrast ratio (typical): 1000:1 Response time (typical): 5 ms (gray-to-gray)	Type: IPS Backlight: LED Size: 27"/68.5 cm (685 mm diagonal) Native resolution: 2560 x 1440 (16:9 aspect ratio) Additional resolution settings: 1920 x 1200, 1920 x 1080, 1600 x 1200, 1680 x 1050, 1280 x 1024, 1024 x 768, 800 x 600, 720 x 400, 640 x 480, Full Screen or 1:1 Display size (H x V): 596.7 x 335.7 mm Pixel pitch: 0.233 x 0.233 mm Display colors: 16.77 million from a palette of 1.06 billion Viewing angles (H/V, typ.): 178°, 178° Brightness (typical): 350 cd/m ² Contrast ratio (typical): 1000:1 Response time (typical): 5 ms (gray-to-gray)	Type: IPS Backlight: LED Size: 24.1"/61.1 cm (611 mm diagonal) Native resolution: 1920 x 1200 (16:10 aspect ratio) Additional resolution settings: 1920 x 1080, 1600 x 1200, 1680 x 1050, 1280 x 1024, 1024 x 768, 800 x 600, 720 x 400, 640 x 480, Full Screen or 1:1 Display size (H x V): 518.4 x 324 mm Pixel pitch: 0.270 x 0.270 mm Display colors: 16.77 million from a palette of 1.06 billion Viewing angles (H/V, typ.): 178°, 178° Brightness (typical): 350 cd/m ² Contrast ratio (typical): 1000:1 Response time (typical): 5 ms (gray-to-gray)	Type: IPS Backlight: LED Size: 24.1"/61.1 cm (611 mm diagonal) Native resolution: 1920 x 1200 (16:10 aspect ratio) Additional resolution settings: 1920 x 1080, 1600 x 1200, 1680 x 1050, 1280 x 1024, 1024 x 768, 800 x 600, 720 x 400, 640 x 480, Full Screen or 1:1 Display size (H x V): 518.4 x 324 mm Pixel pitch: 0.270 x 0.270 mm Display colors: 16.77 million from a palette of 1.06 billion Viewing angles (H/V, typ.): 178°, 178° Brightness (typical): 300 cd/m ² Contrast ratio (typical): 1000:1 Response time (typical): 5 ms (gray-to-gray)
Video signals	Input terminals: USB Type-C x1 (with HDCP), DisplayPort x1 (with HDCP), HDMI x1 (with HDCP) Digital (H, V): USB Type-C: 31 - 89 kHz, 29 - 31 Hz, 59 - 61 Hz DisplayPort: 31 - 89 kHz, 59 - 61 Hz HDMI: 31 - 89 kHz, 29 - 31 Hz, 49 - 51 Hz, 59 - 61 Hz Analogue (H, V): - Sync formats: -	Input terminals: DisplayPort x1, DVI-D 24 pin x1 (with HDCP), HDMI x1 (with HDCP) Digital (H, V): DVI: 31 - 89 kHz, 59 - 61 Hz DisplayPort: 31 - 89 kHz, 59 - 61 Hz HDMI: 31 - 89 kHz, 49 - 61 Hz Analogue (H, V): - Sync formats: -	Input terminals: D-Sub mini 15 pin x1, DVI-D 24 pin x1 (with HDCP), HDMI x1 (with HDCP), DisplayPort x1 (with HDCP) Digital (H, V): DVI: 31 - 76 kHz, 59 - 61 Hz DisplayPort: 31 - 76 kHz, 59 - 61 Hz HDMI: 15 - 76 kHz, 49 - 51 Hz, 59 - 61 Hz Analogue (H, V): 31 - 81 kHz, 55 - 76 Hz Sync formats: Separate	Input terminals: DisplayPort x1 (with HDCP), DVI-D 24 pin x1 (with HDCP), HDMI x1 (with HDCP), D-Sub mini 15 pin x1 Digital (H, V): DVI: 31 - 76 kHz, 59 - 61 Hz DisplayPort: 31 - 76 kHz, 59 - 61 Hz HDMI: 15 - 76 kHz, 49 - 61 Hz Analogue (H, V): 31 - 81 kHz, 55 - 76 Hz Sync formats: Separate
USB	Function: 1 port for upstream, 2 ports for downstream, USB hub Standard: USB 3.1 Gen 1	Function: 1 port for upstream, 2 ports for downstream, USB hub Standard: USB 3.0	Function: 1 port for upstream, 2 ports for downstream, USB hub Standard: USB 3.0	Function: 1 port for upstream, 2 ports for downstream, USB hub Standard: USB 3.0
Audio	Speakers: 1.0 W + 1.0 W Input terminals: - Output terminals: 3.5 mm headphone jack	Speakers: 1.0 W + 1.0 W Input terminals: 3.5 mm stereo jack Output terminals: 3.5 mm headphone jack	Speakers: 1.0 W + 1.0 W Input terminals: 3.5 mm stereo jack Output terminals: 3.5 mm headphone jack	Speakers: 1.0 W + 1.0 W Input terminals: 3.5 mm stereo jack Output terminals: 3.5 mm headphone jack
Power	Power requirements: AC 100 - 240 V, 50/60 Hz Max. power consumption: 96 W Typ. power consumption: 23 W Power save mode / power turned off: Less than 0.5 W / 0 W Energy efficiency class: A Annual power consumption: 42 kWh Power management: Power Save (VESA DPM, DisplayPort Rev. 1.1a, and DVI DMPM)	Power requirements: AC 100 - 240 V, 50/60 Hz Max. power consumption: 67 W Typ. power consumption: 22 W Power save mode / power turned off: Less than 0.5 W / 0 W Energy efficiency class: A Annual power consumption: 39 kWh Power management: Power Save (VESA DPM, DisplayPort Rev. 1.1a and DVI DMPM), Eco Timer	Power requirements: AC 100 - 240 V, 50/60 Hz Max. power consumption: 44 W Typ. power consumption: 11 W Power save mode / power turned off: Less than 0.5 W / 0 W Energy efficiency class: A++ Annual power consumption: 19 kWh Power management: Power Save (VESA DPM, DisplayPort Rev. 1.1a, and DVI DMPM)	Power requirements: AC 100 - 120 V / 200 - 240 V, 50/60 Hz Max. power consumption: 49 W Typ. power consumption: 13 W Power save mode / power turned off: Less than 0.3 W / 0 W Energy efficiency class: A Annual power consumption: 31 kWh Power management: Power Save (VESA DPM, DisplayPort Rev. 1.1a, and DVI DMPM), Eco Timer
Features & functions	Preset modes: Color mode (Paper, Movie, sRGB, User1, User2) Auto EcoView: <input checked="" type="checkbox"/> EcoView Sense: <input checked="" type="checkbox"/> Look-up-table: 3 x 10 Overdrive: <input checked="" type="checkbox"/> Supports landscape and portrait formats: <input checked="" type="checkbox"/> Integrated power supply: <input checked="" type="checkbox"/> Removable stand: <input checked="" type="checkbox"/> Plug & Play: VESA DDC CI OSD languages: English, French, German, Italian, Japanese, Simplified Chinese, Spanish, Swedish, Traditional Chinese	Preset modes: Color mode (Paper, Movie, sRGB, DICOM, User1, User2) Auto EcoView: <input checked="" type="checkbox"/> EcoView Sense: <input checked="" type="checkbox"/> Look-up-table: 3 x 10 Overdrive: <input checked="" type="checkbox"/> Supports landscape and portrait formats: <input checked="" type="checkbox"/> Integrated power supply: <input checked="" type="checkbox"/> Removable stand: <input checked="" type="checkbox"/> Plug & Play: VESA DDC CI OSD languages: English, French, German, Italian, Japanese, Simplified Chinese, Spanish, Swedish, Traditional Chinese	Preset modes: Color mode (Paper, Movie, sRGB, User1, User2, DICOM) Auto EcoView: <input checked="" type="checkbox"/> EcoView Sense: <input checked="" type="checkbox"/> Look-up-table: 3 x 10 Overdrive: <input checked="" type="checkbox"/> Supports landscape and portrait formats: <input checked="" type="checkbox"/> Integrated power supply: <input checked="" type="checkbox"/> Removable stand: <input checked="" type="checkbox"/> Plug & Play: VESA DDC CI OSD languages: English, German, French, Italian, Japanese, Simplified Chinese, Spanish, Swedish, Traditional Chinese	Preset modes: FineContrast (Paper, Movie, sRGB, DICOM, User1, User2) Auto EcoView: <input checked="" type="checkbox"/> EcoView Sense: <input checked="" type="checkbox"/> Look-up-table: 3 x 10 Overdrive: <input checked="" type="checkbox"/> Supports landscape and portrait formats: <input checked="" type="checkbox"/> Integrated power supply: <input checked="" type="checkbox"/> Removable stand: <input checked="" type="checkbox"/> Plug & Play: VESA DDC CI OSD languages: English, French, German, Italian, Japanese, Simplified and Traditional Chinese, Spanish, Swedish
Settings	Via On-Screen Display* or ScreenManager Pro* Brightness, contrast, gamma, all EcoView features, FineContrast, color temperature, saturation, hue, Overdrive, image size, sound source, Super Resolution	Brightness, contrast, gamma, all EcoView features, FineContrast, color temperature, saturation, hue, Overdrive, image size, sound source, Super Resolution	Brightness, contrast, gamma, all EcoView features, FineContrast, color temperature, saturation, hue, Overdrive, image size, sound source, smoothing	Brightness, contrast, gamma, all EcoView features, FineContrast, color temperature, saturation, hue, Overdrive, image size, sound source, smoothing
Physical specifications	Dimensions (W x H x D): 611.6 x 390.2 - 545.2 x 245 mm Dimensions (without stand, W x H x D): 611.6 x 359 x 48.5 mm Net weight: 8.1 kg Net weight (without stand): 5.3 kg Height adjustment range: 155 mm Tilt: 35° Up, 5° Down Swivel: 344° Pivot: 90° (both clockwise and counter clockwise)	Dimensions (W x H x D): 611.6 x 390.2 - 545.2 x 245 mm Dimensions (without stand, W x H x D): 611.6 x 359 x 48.5 mm Net weight: 7.9 kg Net weight (without stand): 5.1 kg Height adjustment range: 155 mm Tilt: 35° Up, 5° Down Swivel: 344° Pivot: 90° (both clockwise and counter clockwise)	Dimensions (W x H x D): 531 x 351.4 - 510.1 x 190 mm Dimensions (without stand, W x H x D): 531 x 341.9 x 45.5 mm Net weight: 5.7 kg Net weight (without stand): 3.7 kg Height adjustment range: 158.6 mm Tilt: 131 mm (maximal 140 mm) Tilt: 35° Up, 5° Down Swivel: 344° Pivot: 90° (both clockwise and counter clockwise)	Dimensions (W x H x D): 530.8 x 368 - 488.2 x 233 mm Dimensions (without stand, W x H x D): 530.8 x 347.2 x 47.9 mm Net weight: 6.5 kg Net weight (without stand): 4.1 kg Height adjustment range: 131 mm (maximal 140 mm) Tilt: 131 mm (maximal 140 mm) Tilt: 35° Up, 5° Down Swivel: 344° Pivot: 90° (both clockwise and counter clockwise)
Certifications & standards	TCO Displays 7.0, EPEAT Gold (US), TUV/Ergonomics (including ISO9241-307), TUV/GS, RCM, CE, CB, eTUVus, FCC-B, Canadian ICES-003-B, TUV/S, VCCI-B, EPA Energy Star, RoHS, WEEE, China RoHS, CCC, EAC	TCO Displays 7.0, EPEAT Gold (US), TUV/Ergonomics (including ISO9241-307), TUV/GS, RCM, CE, CB, eTUVus, FCC-B, Canadian ICES-003-B, TUV/S, VCCI-B, EPA Energy Star, RoHS, WEEE, China RoHS, CCC, EAC	TCO Displays 7.0, EPEAT Gold (US), TUV/Ergonomics (including ISO9241-307), TUV/GS, RCM, CE, CB, eTUVus, FCC-B, Canadian ICES-003-B, TUV/S, VCCI-B, EPA Energy Star, RoHS, WEEE, China RoHS, CCC, EAC	TCO Displays 7.0, EPEAT Gold (US), TUV/Ergonomics (including ISO9241-307), TUV/GS, RCM, CE, CB, eTUVus, FCC-B, Canadian ICES-003-B, TUV/S, VCCI-B, EPA Energy Star, RoHS, WEEE, China RoHS, CCC, EAC
Supplied accessories	AC power cord, signal cable (USB Type-C - USB Type-C), CD-ROM (PDF user's manual), setup guide	AC power cord, signal cables (DisplayPort - DisplayPort), USB cable, EIZO LCD Utility Disk (PDF user's manual), setup guide	AC power cord, signal cables (DisplayPort - DisplayPort), USB cable, EIZO LCD Utility Disk (PDF user's manual), setup guide	AC power cord, signal cables (DisplayPort - DisplayPort), USB 3.0 cable, EIZO LCD Utility Disk (PDF user's manual), setup guide
Warranty	Five years**	Five years**	Five years**	Five years**



	EV2451	EV2450	EV3237
Cabinet color	black, white	light gray, black, white	light gray, black
Panel	Type: IPS Backlight: LED Size: 23.8"/60.4 cm (604 mm diagonal) Native resolution: 1920 x 1080 (16:9 aspect ratio) Additional resolution settings: 1600 x 1200, 1680 x 1050, 1280 x 1024, 1024 x 768, 800 x 600, 720 x 400, Full Screen or 1:1 Display size (H x V): 527 x 296.5 mm Pixel pitch: 0.275 x 0.275 mm Display colors: 16.77 million from a palette of 1.06 billion Viewing angles (H/V, typ.): 178°, 178° Brightness (typical): 250 cd/m ² Contrast ratio (typical): 1000:1 Response time (typical): 5 ms (gray-to-gray)	Type: IPS Backlight: LED Size: 23.8"/60 cm (604 mm diagonal) Native resolution: 1920 x 1080 (16:9 aspect ratio) Additional resolution settings: 1680 x 1050, 1280 x 1024, 1024 x 768, 800 x 600, 720 x 400, 640 x 480, Full Screen or 1:1 Display size (H x V): 527 x 296.4 mm Pixel pitch: 0.2745 x 0.2745 mm Display colors: 16.77 million from a palette of 1.06 billion Viewing angles (H/V, typ.): 178°, 178° Brightness (typical): 250 cd/m ² Contrast ratio (typical): 1000:1 Response time (typical): 5 ms (gray-to-gray)	Type: IPS Backlight: LED Size: 31.5"/80 cm (799 mm diagonal) Native resolution: 3840 x 2160 (60Hz, 16:9 aspect ratio) DVI / HDMI: 3840 x 2160 (30Hz, 16:9 aspect ratio) Additional resolution settings: 2560 x 1440, 1920 x 1200, 1600 x 1200, 1680 x 1050, 1280 x 1024, 1024 x 768, 800 x 600, 720 x 400, 640 x 480, Full Screen or 1:1 Display size (H x V): 696.9 x 392 mm Pixel pitch: 0.1815 x 0.1815 mm Display colors: 16.77 million from a palette of 1.06 billion Viewing angles (H/V, typ.): 178°, 178° Brightness (typical): 300 cd/m ² Contrast ratio (typical): 1000:1 Response time (typical): 5 ms (gray-to-gray)
Video signals	Input terminals: D-Sub mini 15 pin x1, DVI-D 24 pin x1 (with HDCP), HDMI x1 (with HDCP), DisplayPort x1 (with HDCP) Digital (H, V): DVI: 31 - 68 kHz, 59 - 61 Hz DisplayPort: 31 - 68 kHz, 59 - 61 Hz HDMI: 15 - 68 kHz, 49 - 51 Hz, 59 - 61 Hz Analogue (H, V): 31 - 81 kHz, 55 - 76 Hz Sync formats: Separate	Input terminals: DisplayPort x1 (with HDCP), DVI-D 24 pin x1 (with HDCP), HDMI x1 (with HDCP), D-Sub mini 15 pin x1 Digital (H, V): DVI: 31 - 68 kHz, 59 - 61 Hz DisplayPort: 31 - 68 kHz, 59 - 61 Hz HDMI: 15 - 68 kHz, 49 - 61 Hz Analogue (H, V): 31 - 81 kHz, 55 - 76 Hz Sync formats: Separate	Input terminals: DisplayPort 1.2 x 2 (with HDCP 1.x), DVI-D 24 pin x1 (with HDCP 1.x), HDMI x1 (with HDCP 1.x) Digital (H, V): 31 - 134 kHz, 29 - 31 Hz and 59 - 61 Hz Analogue (H, V): - Sync formats: -
USB	Function: 1 port for upstream, 2 ports for downstream, USB hub Standard: USB 3.0	Function: 1 port for upstream, 2 ports for downstream, USB hub Standard: USB 3.0	Function: 1 port for upstream, 3 ports for downstream, USB hub (including 1 USB battery charge port) Standard: USB 3.0, USB BC 1.2
Audio	Speakers: 1.0 W + 1.0 W Input terminals: 3.5 mm stereo jack Output terminals: 3.5 mm headphone jack	Speakers: 1.0 W + 1.0 W Input terminals: 3.5 mm stereo jack Output terminals: 3.5 mm headphone jack	Speakers: 1.0 W + 1.0 W Input terminals: 3.5 mm stereo jack Output terminals: 3.5 mm stereo jack
Power	Power requirements: AC 100 - 120 V / 200 - 240 V, 50/60 Hz Max. power consumption: 47 W Typ. power consumption: 13 W Power save mode / power turned off: Less than 0.3 W / 0 W Energy efficiency class: A++ Annual power consumption: 19 kWh Power management: Power Save (VESA DPM, DisplayPort Rev. 1.1a, and DVI DMPM)	Power requirements: AC 100 - 120 V / 200 - 240 V, 50/60 Hz Max. power consumption: 44 W Typ. power consumption: 11 W Power save mode / power turned off: Less than 0.3 W / 0 W Energy efficiency class: A+ Annual power consumption: 25 kWh Power management: Power Save (VESA DPM, DisplayPort Rev. 1.1a and DVI DMPM), Eco Timer	Power requirements: AC 100 - 120 V / 200 - 240 V, 50 / 60 Hz Max. power consumption: 105 W Typ. power consumption: 30 W Power save mode / power turned off: Less than 0.5 W / 0 W Energy efficiency class: B Annual power consumption: 74 kWh Power management: Power Save (VESA DPM, DisplayPort Rev. 1.1a and DVI DMPM), Eco Timer
Features & functions	Preset modes: Color mode (Paper, Movie, sRGB, User1, User2, DICOM) Auto EcoView: <input checked="" type="checkbox"/> EcoView Sense: <input checked="" type="checkbox"/> Look-up-table: 3 x 10 Overdrive: <input checked="" type="checkbox"/> Supports landscape and portrait formats: <input checked="" type="checkbox"/> Integrated power supply: <input checked="" type="checkbox"/> Removable stand: <input checked="" type="checkbox"/> Plug & Play: VESA DDC CI OSD languages: English, French, German, Italian, Japanese, Simplified and Traditional Chinese, Spanish, Swedish	Preset modes: FineContrast (Paper, Movie, sRGB, DICOM, User1, User2) Auto EcoView: <input checked="" type="checkbox"/> EcoView Sense: <input checked="" type="checkbox"/> Look-up-table: 3 x 10 Overdrive: <input checked="" type="checkbox"/> Supports landscape and portrait formats: <input checked="" type="checkbox"/> Integrated power supply: <input checked="" type="checkbox"/> Removable stand: <input checked="" type="checkbox"/> Plug & Play: VESA DDC CI OSD languages: English, French, German, Italian, Japanese, Simplified and Traditional Chinese, Spanish, Swedish	Preset modes: Color mode (Paper, Movie, sRGB, User1, User2) Auto EcoView: <input checked="" type="checkbox"/> EcoView Sense: <input checked="" type="checkbox"/> Look-up-table: 3 x 10 Overdrive: <input checked="" type="checkbox"/> Supports landscape and portrait formats: <input checked="" type="checkbox"/> Integrated power supply: <input checked="" type="checkbox"/> Removable stand: <input checked="" type="checkbox"/> Plug & Play: VESA DDC CI OSD languages: English, French, German, Italian, Japanese, Simplified Chinese, Spanish, Swedish, Traditional Chinese
Settings	Via On-Screen Display* or ScreenManager Pro* Brightness, contrast, gamma, all EcoView features, FineContrast, color temperature, saturation, hue, Overdrive, image size, sound source, smoothing	Brightness, contrast, gamma, all EcoView features, FineContrast, color temperature, saturation, hue, Overdrive, image size, sound source, smoothing	Brightness, contrast, gamma, all EcoView features, FineContrast, color temperature, saturation, hue, Overdrive, image size, sound source, Super Resolution
Physical specifications	Dimensions (W x H x D): 537.7 x 322.7 - 495.4 x 190 mm Dimensions (without stand, W x H x D): 537.7 x 313.1 x 45.5 mm Net weight: 5.5 kg Net weight (without stand): 3.5 kg Height adjustment range: 172.7 mm Tilt: 35° Up, 5° Down Swivel: 344° Pivot: 90° (both clockwise and counter clockwise)	Dimensions (W x H x D): 537.6 x 386 - 473.5 x 233 mm Dimensions (without stand, W x H x D): 537.6 x 317.6 x 47.9 mm Net weight: 6.2 kg Net weight (without stand): 3.8 kg Height adjustment range: 140 mm Tilt: 35° Up, 5° Down Swivel: 344° Pivot: 90° (both clockwise and counter clockwise)	Dimensions (W x H x D): 731 x 439 - 578 x 245 mm Dimensions (without stand, W x H x D): 731 x 428 x 59.5 mm Net weight: 10.6 kg Net weight (without stand): 7.8 kg Height adjustment range: 139 mm Tilt: 35° Up, 5° Down Swivel: 344° Pivot: -
Certifications & standards	TCO Displays 7.0, EPEAT Gold (US), TUV/Ergonomics (including ISO9241-307), TUV/GS, RCM, CE, CB, eTUVus, FCC-B, Canadian ICES-003-B, TUV/S, VCCI-B, EPA Energy Star, RoHS, WEEE, China RoHS, CCC, EAC	TCO Displays 7.0, EPEAT Gold (US), TUV/Ergonomics (including ISO9241-307), TUV/GS, RCM, CE, CB, eTUVus, FCC-B, Canadian ICES-003-B, TUV/S, VCCI-B, EPA Energy Star, RoHS, WEEE, China RoHS, CCC, EAC	TCO Displays 7.0, TUV/Ergonomics (including ISO9241-307), TUV/GS, RCM, CE, CB, eTUVus, FCC-B, Canadian ICES-003-B, TUV/S, VCCI-B, EPA Energy Star, RoHS, WEEE, China RoHS, CCC, EAC
Supplied accessories	AC power cord, signal cables (DisplayPort - DisplayPort), USB 3.0 cable, EIZO LCD Utility Disk (PDF user's manual), setup guide	AC power cord, signal cables (DisplayPort - DisplayPort), USB 3.0 cable, EIZO LCD Utility Disk (PDF user's manual), setup guide	AC power cord, signal cables (DisplayPort - DisplayPort), USB 3.0 cable, EIZO LCD Utility Disk (PDF user's manual), setup guide
Warranty	Five years**	Five years**	Five years**

*The on-screen display and software have different ranges of functions.
**Zero pixel error guarantee for fully illuminated sub-pixels (partial image elements ISO 9241-307). Valid: six months from the date of purchase.

SPECIFICATIONS



	EV2730Q	EV2416W	EV2316W	EV2216W
Cabinet color	light gray, black	light gray, black	light gray, black	light gray, black
Panel	Type: IPS Backlight: LED Size: 26.5"/67 cm (672 mm diagonal) Native resolution: 1920x1200 (1:1 aspect ratio) Additional resolution settings: 1920x1200, 1600x1200, 1280x1024, 1024x768, 800x600, 720x400, 640x480, Full Screen or 1:1 Display size (HxV): 475.7 x 475.7 mm Pixel pitch: 0.2478 x 0.2478 mm Display colors: 16.77 million from a palette of 1.06 billion Viewing angles (H/V, typ.): 178°, 178° Brightness (typical): 300 cd/m² Contrast ratio (typical): 1000:1 Response time (typical): 5 ms (gray-to-gray)	Type: TN Backlight: LED Size: 24.1"/61 cm (611 mm diagonal) Native resolution: 1920x1200 (16:10 aspect ratio) Additional resolution settings: 1600x1200, 1680x1050, 1280x1024, 1024x768, 800x600, 720x400, 640x480, Full Screen or 1:1 Display size (HxV): 518.4 x 324.0 mm Pixel pitch: 0.270 x 0.270 mm Display colors: 16.77 million from a palette of 1.06 billion Viewing angles (H/V, typ.): 170°, 160° Brightness (typical): 250 cd/m² Contrast ratio (typical): 1000:1 Response time (typical): 5 ms (black-white-black)	Type: TN Backlight: LED Size: 23"/58 cm (584 mm diagonal) Native resolution: 1920x1080 (16:9 aspect ratio) Additional resolution settings: 1680x1050, 1280x1024, 1024x768, 800x600, 720x400, 640x480, Full Screen or 1:1 Display size (HxV): 509.8 x 286.7 mm Pixel pitch: 0.2655 x 0.2655 mm Display colors: 16.77 million from a palette of 1.06 billion Viewing angles (H/V, typ.): 170°, 160° Brightness (typical): 250 cd/m² Contrast ratio (typical): 1000:1 Response time (typical): 5 ms (black-white-black)	Type: TN Backlight: LED Size: 22"/56 cm (558 mm diagonal) Native resolution: 1680x1050 (16:10 aspect ratio) Additional resolution settings: 1280x1024, 1024x768, 800x600, 720x400, 640x480, Full Screen or 1:1 Display size (HxV): 473.7 x 296.1 mm Pixel pitch: 0.282 x 0.282 mm Display colors: 16.77 million from a palette of 1.06 billion Viewing angles (H/V, typ.): 170°, 160° Brightness (typical): 250 cd/m² Contrast ratio (typical): 1000:1 Response time (typical): 5 ms (black-white-black)
Video signals	Input terminals: DisplayPort x1, DVI-D 24 pin x1 (with HDCP) Digital (H, V): 31 - 127 kHz, 59 - 61 Hz (VGA Text: 69 - 71 Hz, Single link: 29 - 31 Hz) Analogue (H, V): - Sync formats: -	Input terminals: DisplayPort x1 (with HDCP), DVI-D 24 pin x1 (with HDCP), D-Sub mini 15 pin x1 Digital (H, V): 31 - 76 kHz, 59 - 61 Hz Analogue (H, V): 31 - 76 kHz, 55 - 61 Hz Sync formats: Separate	Input terminals: DisplayPort x1 (with HDCP), DVI-D 24 pin x1 (with HDCP), D-Sub mini 15 pin x1 Digital (H, V): DisplayPort: 31 - 67.5 kHz, 59 - 61 Hz DVI: 31 - 68.0 kHz, 59 - 61 Hz 31 - 68 kHz, 55 - 61 Hz Analogue (H, V): 31 - 68 kHz, 55 - 61 Hz Sync formats: Separate	Input terminals: DisplayPort x1 (with HDCP), DVI-D 24 pin x1 (with HDCP), D-Sub mini 15 pin x1 Digital (H, V): DisplayPort: 31 - 67.5 kHz, 59 - 61 Hz DVI: 31 - 68.0 kHz, 59 - 61 Hz 31 - 68 kHz, 55 - 61 Hz Analogue (H, V): 31 - 68 kHz, 55 - 61 Hz Sync formats: Separate
USB	Function: 1 port for upstream, 2-port USB hub Standard: USB 2.0	Function: 1 port for upstream, 2 ports for downstream, USB hub Standard: USB 2.0	Function: 1 port for upstream, 2 ports for downstream, USB hub Standard: USB 2.0	Function: 1 port for upstream, 2 ports for downstream, USB hub Standard: USB 2.0
Audio	Speakers: 1.0 W+1.0 W Input terminals: 3.5 mm stereo jack Output terminals: 3.5 mm headphone jack	Speakers: 1.0 W+1.0 W Input terminals: 3.5 mm stereo jack Output terminals: 3.5 mm headphone jack	Speakers: 1.0 W+1.0 W Input terminals: 3.5 mm stereo jack Output terminals: 3.5 mm headphone jack	Speakers: 1.0 W+1.0 W Input terminals: 3.5 mm stereo jack Output terminals: 3.5 mm headphone jack
Power	Power requirements: AC 100 - 240 V, 50/60 Hz Max. power consumption: 64 W Typ. power consumption: 25 W Power save mode / power turned off: Less than 0.5 W / 0 W Power management: Power Save (VESA-DPM, DisplayPort Version 1.1a and DVI-DMPM), Eco Timer	Power requirements: AC 100 - 120 V / 200 - 240 V, 50 / 60 Hz Max. power consumption: 45 W Typ. power consumption: 15 W Power save mode / power turned off: Less than 0.3 W / 0 W Power management: Power Save (VESA-DPM, DisplayPort Version 1.1a and DVI-DMPM), Eco Timer	Power requirements: AC 100 - 120 V / 200 - 240 V, 50 / 60 Hz Max. power consumption: 37 W Typ. power consumption: 10 W Power save mode / power turned off: Less than 0.3 W / 0 W Power management: Power Save (VESA DPM and DVI DMPM), Eco Timer	Power requirements: AC 100 - 120 V / 200 - 240 V, 50 / 60 Hz Max. power consumption: 39 W Typ. power consumption: 12 W Power save mode / power turned off: Less than 0.3 W / 0 W Power management: Power Save (VESA DPM and DVI DMPM), Eco Timer
Features & functions	Preset modes: FineContrast (Paper, Movie, sRGB, User1, User2) Auto EcoView: <input checked="" type="checkbox"/> EcoView Sense: <input checked="" type="checkbox"/> Look-up-table: 3 x 10 Overdrive: <input checked="" type="checkbox"/> Supports landscape and portrait formats: <input checked="" type="checkbox"/> UpView: <input checked="" type="checkbox"/> Integrated power supply: <input checked="" type="checkbox"/> Removable stand: <input checked="" type="checkbox"/> Plug & Play: VESA DDC CI OSD languages: English, French, German, Italian, Japanese, Simplified and Traditional Chinese, Spanish, Swedish	Preset modes: FineContrast (Paper, Movie, sRGB, User1, User2) Auto EcoView: <input checked="" type="checkbox"/> EcoView Sense: <input checked="" type="checkbox"/> Look-up-table: 3 x 10 Overdrive: <input checked="" type="checkbox"/> Supports landscape and portrait formats: <input checked="" type="checkbox"/> UpView: <input checked="" type="checkbox"/> Integrated power supply: <input checked="" type="checkbox"/> Removable stand: <input checked="" type="checkbox"/> Plug & Play: VESA DDC CI OSD languages: English, French, German, Italian, Japanese, Simplified and Traditional Chinese, Spanish, Swedish	Preset modes: FineContrast (Paper, Movie, sRGB, User1, User2) Auto EcoView: <input checked="" type="checkbox"/> EcoView Sense: <input checked="" type="checkbox"/> Look-up-table: 3 x 10 Overdrive: <input checked="" type="checkbox"/> Supports landscape and portrait formats: <input checked="" type="checkbox"/> UpView: <input checked="" type="checkbox"/> Integrated power supply: <input checked="" type="checkbox"/> Removable stand: <input checked="" type="checkbox"/> Plug & Play: VESA DDC CI OSD languages: English, French, German, Italian, Japanese, Simplified and Traditional Chinese, Spanish, Swedish	Preset modes: FineContrast (Paper, Movie, sRGB, User1, User2) Auto EcoView: <input checked="" type="checkbox"/> EcoView Sense: <input checked="" type="checkbox"/> Look-up-table: 3 x 10 Overdrive: <input checked="" type="checkbox"/> Supports landscape and portrait formats: <input checked="" type="checkbox"/> UpView: <input checked="" type="checkbox"/> Integrated power supply: <input checked="" type="checkbox"/> Removable stand: <input checked="" type="checkbox"/> Plug & Play: VESA DDC CI OSD languages: English, French, German, Italian, Japanese, Simplified and Traditional Chinese, Spanish, Swedish
Settings	Via On-Screen Display* or ScreenManager Pro* Brightness, contrast, gamma, all EcoView features, FineContrast, color temperature, saturation, hue, Overdrive, image size, sound source, Super Resolution	Brightness, contrast, gamma, all EcoView features, FineContrast, color temperature, saturation, hue, image size, sound source, smoothing	Brightness, contrast, gamma, all EcoView features, FineContrast, color temperature, saturation, hue, Overdrive, image size, sound source, smoothing	Brightness, contrast, gamma, all EcoView features, FineContrast, color temperature, saturation, hue, Overdrive, image size, sound source, smoothing
Physical specifications	Dimensions (WxHxD): 497 x 512.5 - 613.5 x 245 mm Dimensions (without stand, WxHxD): 497 x 501.5 x 56 mm Net weight: 7.1 kg Net weight (without stand): 4.2 kg Height adjustment range: 101 mm (maximal 141 mm) Tilt: 35° Up, 5° Down Swivel: 344° Pivot: 90° Hole spacing (VESA Std.): 100x100 mm	Dimensions (WxHxD): 552.5 x 368 - 499 x 233 mm Dimensions (without stand, WxHxD): 552.5 x 358 x 57 mm Net weight: 6.1 kg Net weight (without stand): 3.7 kg Height adjustment range: 131 mm (maximum 140 mm) Tilt: 35° Up, 5° Down Swivel: 344° Pivot: 90° Hole spacing (VESA Std.): 100x100 mm	Dimensions (WxHxD): 540 x 368 - 478.5 x 233 mm Dimensions (without stand, WxHxD): 540 x 317.5 x 56 mm Net weight: 5.4 kg Net weight (without stand): 3.1 kg Height adjustment range: 140 mm Tilt: 35° Up, 5° Down Swivel: 344° Pivot: 90° Hole spacing (VESA Std.): 100x100 mm	Dimensions (WxHxD): 500 x 368 - 483.1 x 233 mm Dimensions (without stand, WxHxD): 500 x 326.5 x 54 mm Net weight: 5.6 kg Net weight (without stand): 3.3 kg Height adjustment range: 100 mm Tilt: 30° Up, 0° Down Swivel: 35° Right / 35° Left Pivot: 90° Hole spacing (VESA Std.): 100x100 mm
Certifications & standards	TCO Displays 6.0, EPEAT Gold (US), TUV/Ergonomics (including ISO9241-307), TUV/GS, RCM, CE, CB, cTUVus, FCC-B, Canadian ICES-003-B, TUV/S, VCCI-B, EPA Energy Star, RoHS, WEEE, China RoHS, CCC, EAC	TCO Displays 7.0, EPEAT Gold (US), TUV/Ergonomics (including ISO9241-307), TUV/GS, RCM, CE, CB, cTUVus, FCC-B, Canadian ICES-003-B, TUV/S, VCCI-B, EPA Energy Star, RoHS, WEEE, China RoHS, CCC, EAC	TCO Displays 7.0, EPEAT Gold (US), TUV/Ergonomics (including ISO9241-307), TUV/GS, RCM, CE, CB, cTUVus, FCC-B, Canadian ICES-003-B, TUV/S, VCCI-B, EPA Energy Star, RoHS, WEEE, China RoHS, CCC, EAC	TCO Displays 7.0, EPEAT Gold (US), TUV/Ergonomics (including ISO9241-307), TUV/GS, RCM, CE, CB, cTUVus, FCC-B, Canadian ICES-003-B, TUV/S, VCCI-B, EPA Energy Star, RoHS, WEEE, China RoHS, CCC, EAC
Supplied accessories	AC power cord, signal cables (DVI-D - DVI-D [dual link supported]), DisplayPort - DisplayPort, EIZO LCD Utility Disk (PDF user's manual, ScreenManager Pro for LCD [DDC/Ci], EIZO ScreenSlicer software), setup guide	AC power cord, signal cables (DVI-D - DVI-D, DisplayPort - DisplayPort), EIZO LCD Utility Disk (PDF user's manual, ScreenManager Pro for LCD [DDC/Ci], EIZO ScreenSlicer software), setup guide	AC power cord, signal cables (DVI-D - DVI-D, DisplayPort - DisplayPort), EIZO LCD Utility Disk (PDF user's manual, ScreenManager Pro for LCD [DDC/Ci], EIZO ScreenSlicer software), setup guide	AC power cord, signal cables (DVI-D - DVI-D, DisplayPort - DisplayPort), EIZO LCD Utility Disk (PDF user's manual, ScreenManager Pro for LCD [DDC/Ci], EIZO ScreenSlicer software), setup guide
Warranty	Five years**	Five years	Five years	Five years

*The on-screen display and software have different ranges of functions.
**Zero pixel error guarantee for fully illuminated sub-pixels (partial image elements ISO 9241-307).
Valid: six months from the date of purchase.



	S2133	S1934	S1923	T2381W
Cabinet color	light gray, black	gray, black	light gray, black	light gray, black
Panel	Type: IPS Backlight: LED Size: 21.3"/54 cm (540 mm diagonal) Native resolution: 1600x1200 (4:3 aspect ratio) Additional resolution settings: 1280x1024, 1024x768, 800x600, 720x400, 640x480 Full Screen or 1:1 Display size (HxV): 432 x 324 mm Pixel pitch: 0.270 x 0.270 mm Display colors: 16.77 million from a palette of 1.06 billion Viewing angles (H/V, typ.): 178°, 178° Brightness (typical): 420 cd/m² Contrast ratio (typical): 1500:1 Response time (typical): 6 ms (gray-to-gray)	Type: IPS Backlight: LED Size: 19"/48 cm (481 mm diagonal) Native resolution: 1280x1024 (5:4 aspect ratio) Additional resolution settings: 1024x768, 800x600, 720x400, 640x480 Full Screen or 1:1 Display size (HxV): 374.8 x 299.8 mm Pixel pitch: 0.293 x 0.293 mm Display colors: 16.77 million from a palette of 1.06 billion Viewing angles (H/V, typ.): 178°, 178° Brightness (typical): 250 cd/m² Contrast ratio (typical): 1000:1 Response time (typical): 14 ms (gray-to-gray)	Type: VA Backlight: LED Size: 19"/48 cm (481 mm diagonal) Native resolution: 1280x1024 (5:4 aspect ratio) Additional resolution settings: 1024x768, 800x600, 720x400, 640x480, Full Screen Display size (HxV): 376.3 x 301 mm Pixel pitch: 0.294 x 0.294 mm Display colors: 16.77 million from a palette of 1.06 billion Viewing angles (H/V, typ.): 178°, 178° Brightness (typical): 250 cd/m² Contrast ratio (typical): 2000:1 Response time (typical): 20 ms (black-white-black)	Type: IPS Backlight: LED Size: 23"/58 cm (584 mm diagonal) Native resolution: 1920x1080 (16:9 aspect ratio) Additional resolution settings: 1280x1024, 1024x768, 800x600, 720x400, 640x480, Full Screen Display size (HxV): 509.1 x 286.4 mm Pixel pitch: 0.265 x 0.265 mm Display colors: 16.77 million from a palette of 1.06 billion Viewing angles (H/V, typ.): 178°, 178° Brightness (typical): 260 cd/m² Contrast ratio (typical): 1000:1 Response time (typical): 6 ms (gray-to-gray)
Touch panel	Type: - Communication protocol: - Touch life: - Surface hardness: - Compatible OS: -	Type: - Communication protocol: - Touch life: - Surface hardness: - Compatible OS: -	Type: - Communication protocol: - Touch life: - Surface hardness: - Compatible OS: -	Type: Project capacitive Communication protocol: USB Touch life: 50 million touches (minimum) Surface hardness: 5H Compatible OS: Multi-Touch: Windows 10/8.1/8/7 (32 Bit, 64 Bit), Single-Touch: Windows XP (32 Bit)
Video signals	Input terminals: DisplayPort x1 (with HDCP), DVI-D 24 pin x1 (with HDCP), D-Sub mini 15 pin x1 Digital (H/V): 31 - 76 kHz, 59 - 61 Hz (VGA Text: 69 - 71 Hz) Analogue (H/V): 24 - 80 kHz, 49 - 76 Hz Sync formats: Separate, composite	Input terminals: DisplayPort x1 (with HDCP), DVI-D 24 pin x1 (with HDCP), D-Sub mini 15 pin x1 Digital (H/V): 31 - 64 kHz, 59 - 61 Hz Analogue (H/V): 31 - 64 kHz, 55 - 61 Hz Sync formats: Separate	Input terminals: DVI-D 24 pin (with HDCP), D-Sub mini 15 pin Digital (H/V): 31 - 64 kHz, 59 - 61 Hz (VGA Text: 69 - 71 Hz) Analogue (H/V): 31 - 80 kHz, 50 - 75 Hz Sync formats: Separate, sync on green	Input terminals: DisplayPort x1 (with HDCP), DVI-D 24 pin x1 (with HDCP), D-Sub mini 15 pin x1 Digital (H/V): 31 - 68 kHz, 59 - 61 Hz (VGA Text: 69 - 71 Hz) Analogue (H/V): 31 - 81 kHz, 55 - 76 Hz Sync formats: Separate
USB	Function: 1 port for upstream, 2 ports for downstream, USB hub Standard: USB 2.0	Function: - Standard: -	Function: - Standard: -	Function: 1 port for touch panel control, 2-port USB hub Standard: USB 2.0
Audio	Speakers: - Input terminals: - Output terminals: 3.5 mm headphone jack	Speakers: 0.5 W + 0.5 W Input terminals: 3.5 mm stereo jack Output terminals: 3.5 mm headphone jack	Speakers: 0.5 W + 0.5 W Input terminals: 3.5 mm stereo jack Output terminals: 3.5 mm headphone jack	Speakers: 1.0 W + 1.0 W Input terminals: 3.5 mm stereo jack Output terminals: 3.5 mm headphone jack
Power	Power requirements: AC 100 - 120 V / 200 - 240 V, 50 / 60 Hz Max. power consumption: 21 W Typ. power consumption: 9 W Power save mode / power turned off: Less than 0.3 W / 0 W Power management: Power Save (VESA DPM and DVI DMPM), Eco Timer	Power requirements: AC 100 - 120 V / 200 - 240 V, 50 / 60 Hz Max. power consumption: 13 W Typ. power consumption: 9 W Power save mode / power turned off: Less than 0.5 W Power management: Power Save (VESA DPM and DVI DMPM)	Power requirements: AC 100 - 120 V / 200 - 240 V, 50 / 60 Hz Max. power consumption: 41 W Typ. power consumption: 16 W Power save mode / power turned off: Less than 0.5 W Power management: Power Save (VESA DPM and DVI DMPM), Eco Timer	Power requirements: AC 100 - 120 V / 200 - 240 V, 50 / 60 Hz Max. power consumption: 18 W Typ. power consumption: 18 W Power save mode / power turned off: Less than 0.5 W / 0 W Power management: Power Save (VESA DPM, DisplayPort Rev. 1.1a and DVI DMPM), Eco Timer
Features & functions	Preset modes: FineContrast (User1, User2, sRGB, Paper, Movie) Auto EcoView: <input checked="" type="checkbox"/> Look-up-table: 3 x 10 Overdrive: <input checked="" type="checkbox"/> Supports landscape and portrait formats: <input checked="" type="checkbox"/> Integrated power supply: <input checked="" type="checkbox"/> Removable stand: <input checked="" type="checkbox"/> Plug & Play: VESA DDC CI OSD languages: English, French, German, Italian, Japanese, Simplified and Traditional Chinese, Spanish, Swedish	Preset modes: FineContrast (Paper, sRGB, User1, User2, DICOM) Auto EcoView: <input checked="" type="checkbox"/> Look-up-table: 3 x 10 Overdrive: <input checked="" type="checkbox"/> Supports landscape and portrait formats: <input checked="" type="checkbox"/> Integrated power supply: <input checked="" type="checkbox"/> Removable stand: <input checked="" type="checkbox"/> Plug & Play: VESA DDC CI OSD languages: English, French, German, Italian, Japanese, Simplified and Traditional Chinese, Spanish, Swedish	Preset modes: FineContrast (Text, sRGB, EyeCare, Paper, Custom) Auto EcoView: <input checked="" type="checkbox"/> Look-up-table: 3 x 10 Overdrive: <input checked="" type="checkbox"/> Supports landscape and portrait formats: <input checked="" type="checkbox"/> Integrated power supply: <input checked="" type="checkbox"/> Removable stand: <input checked="" type="checkbox"/> Plug & Play: VESA DDC CI OSD languages: English, French, German, Italian, Japanese, Simplified and Traditional Chinese, Spanish, Swedish	Preset modes: FineContrast (Paper, Movie, sRGB, User1, User2) Auto EcoView: <input checked="" type="checkbox"/> Look-up-table: 3 x 10 Overdrive: <input checked="" type="checkbox"/> Supports landscape and portrait formats: <input checked="" type="checkbox"/> Integrated power supply: <input checked="" type="checkbox"/> Removable stand: <input checked="" type="checkbox"/> Plug & Play: VESA DDC CI OSD languages: English, French, German, Italian, Japanese, Simplified and Traditional Chinese, Spanish, Swedish
Settings	Via On-Screen Display* or ScreenManager Pro* Brightness, contrast, gamma, all EcoView features, FineContrast, color temperature, saturation, hue, Overdrive, image size, smoothing	Brightness, contrast, gamma, all EcoView features, FineContrast, color temperature, saturation, hue, Overdrive, image size, smoothing	Brightness, contrast, gamma, all EcoView features, FineContrast, color temperature, saturation, hue, Overdrive, image size, smoothing	Brightness, contrast, gamma, all EcoView features, FineContrast, color temperature, saturation, hue, Overdrive, image size, smoothing
Physical specifications	Dimensions (WxHxD): 465 x 453 - 535 x 208.5 mm Dimensions (without stand, WxHxD): 465 x 361 x 64 mm Net weight: 8.6 kg Net weight (without stand): 5.6 kg Height adjustment range: 82 mm Tilt: 40° Up, 0° Down Swivel: 35° Right / 35° Left Pivot: 90° Hole spacing (VESA Std.): 100x100 mm	Dimensions (WxHxD): 405 x 406.5 - 506.5 x 205 mm Dimensions (without stand, WxHxD): 405 x 334 x 61.5 mm Net weight: 5.6 kg Net weight (without stand): 3.8 kg Height adjustment range: 100 mm Tilt: 30° Up, 0° Down Swivel: 35° Right / 35° Left Pivot: 90° Hole spacing (VESA Std.): 100x100 mm	Dimensions (WxHxD): 405 x 406.5 - 506.5 x 205 mm Dimensions (without stand, WxHxD): 405 x 334 x 61.5 mm Net weight: 6.0 kg Net weight (without stand): 4.2 kg Height adjustment range: 100 mm Tilt: 30° Up, 0° Down Swivel: 35° Right / 35° Left Pivot: 90° Hole spacing (VESA Std.): 100x100 mm	Dimensions (WxHxD): 556.7 x 143.9 - 360.7 x 89 - 401.3 mm Dimensions (without stand, WxHxD): 556.7 x 339.2 x 54 mm Net weight: 6.6 kg Net weight (without stand): 6.0 kg Height adjustment range: - Tilt: 15° - 70° Swivel: - Pivot: - Hole spacing (VESA Std.): 100x100 mm
Certifications & standards	TCO Displays 7.0, EPEAT Gold (US), TUV/Ergonomics (including ISO9241-307), TUV/GS, RCM, CE, CB, cTUVus, FCC-B, Canadian ICES-003-B, TUV/S, VCCI-B, EPA Energy Star, RoHS, WEEE, China RoHS, CCC, EAC	TCO Displays 7.0, EPEAT Gold (US), TUV/Ergonomics (including ISO9241-307), TUV/GS, RCM, CE, CB, cTUVus, FCC-B, Canadian ICES-003-B, TUV/S, VCCI-B, EPA Energy Star, RoHS, WEEE, China RoHS, CCC, EAC	TCO Displays 7.0, EPEAT Gold (US), TUV/Ergonomics (including ISO9241-307), TUV/GS, RCM, CE, CB, cTUVus, FCC-B, Canadian ICES-003-B, TUV/S, VCCI-B, EPA Energy Star, RoHS, WEEE, China RoHS, CCC, EAC	TCO Displays 7.0, EPEAT Gold (US), TUV/Ergonomics (including ISO9241-307), TUV/GS, RCM, CE, CB, cTUVus, FCC-B, Canadian ICES-003-B, TUV/S, VCCI-B, EPA Energy Star, RoHS, WEEE, China RoHS, CCC, EAC
Supplied accessories	AC power cord, signal cables (DVI-D - DVI-D, D-Sub - D-Sub), USB cable, EIZO LCD Utility Disk (PDF user's manual, ScreenManager Pro for LCD [DDC/Ci], EIZO ScreenSlicer software)	AC power cord, signal cables (D-Sub - D-Sub, DVI-D - DVI-D), audiocable, setup guide, CD-ROM (PDF user's manual)	AC power cord, signal cables (D-Sub - D-Sub, DVI-D - DVI-D), audio cable, audio cable, cleaning cloth, EIZO LCD Utility Disk (PDF user's manual, ScreenManager Pro for LCD [DDC/Ci], ScreenSlicer software), 4 screws for mount option	AC power cord, signal cables (DVI-D - DVI-D, D-Sub - D-Sub), USB cable, audio cable, cleaning cloth, EIZO LCD Utility Disk (PDF user's manual, touch panel driver for Windows XP), Mask Sheet, setup guide
Warranty	Five years	Five years	Five years	Three years

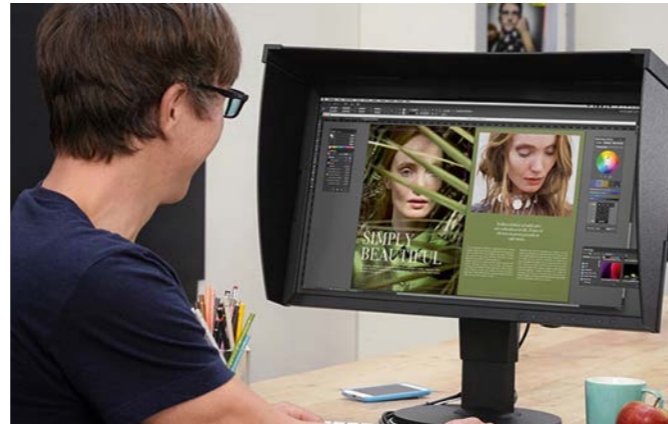
*The on-screen display and software have different ranges of functions.

SPECIALISTS IN EVERY INDUSTRY

EIZO offers monitors for a wide variety of industries and application areas. We have presented our FlexScan monitors on the previous pages and described their special abilities for use in home, office or even school environments. However, other areas require quite different, more specialized features. Have a look at our other experts from the entire range of EIZO monitors.

ColorEdge

ColorEdge is a series of color management monitors and software solutions that provides users in photography, film, and graphic design faithful color reproduction, ease-of-use and reliability for expressing their creative vision.



FORIS

FORIS is EIZO's line of monitors for gaming and watching videos. With unique features such as smartphone notifications for incoming messages or phone calls, FORIS provides users with an immersive experience.



CuratOR/Radiforce

With CuratOR, EIZO offers complete solutions for the integrated OR, interventional radiology and the control room. Radiforce medical monitors are designed for displaying medical images faithfully using cutting edge technology and unique features.



DuraVision

DuraVision monitors offer robust performance and reliable 24/7 operation to maritime, security and surveillance, and industrial markets. The monitors are highly configurable for flexible installation in a range of environments.



Raptor/Re/Vue

EIZO provides air traffic control centers, towers and training and simulation facilities with the most extensive lineup of monitors, recording and streaming solutions, and graphics boards in the industry. Extensive customizability is also offered for meeting the needs of any installation.

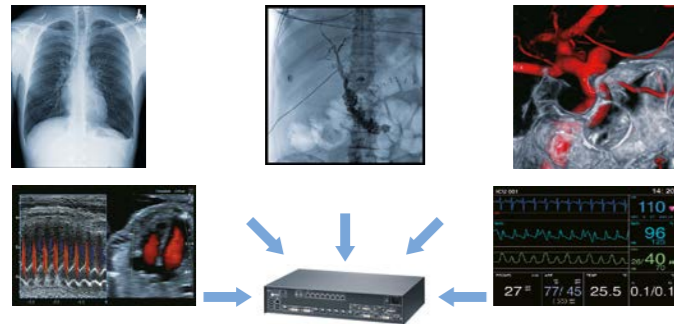


INNOVATIVE TECHNOLOGY

We also offer solutions that utilize innovative technologies, in addition to implementing very high-quality components.

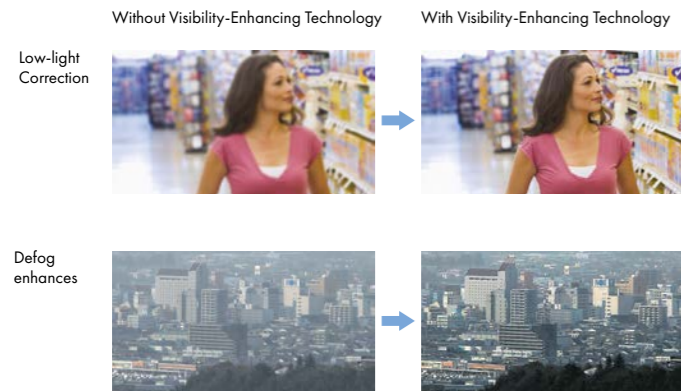
Video management solutions

EIZO's Large Monitor Manager gathers various video inputs and displays them on a single large screen. Different layouts can be arranged according to user preference and work environment for a streamlined workflow.



Visibility-enhancing technology

EIZO's Visibility Enhancer technology includes three functions for improving image clarity in security environments. Defog enhances images that appear hazy due to fog or snow. Low-light Correction directs areas of the screen that are too dark and adjusts the brightness of each pixel. Smart Resolution ensures noise is not accentuated while correcting blurred areas.



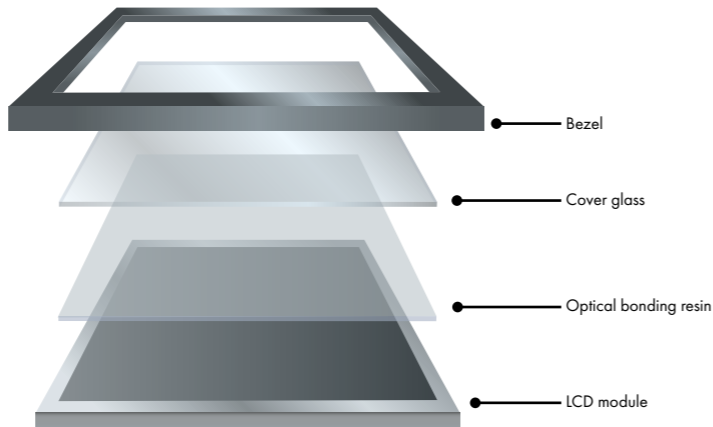
IP security monitors

EIZO's IP solutions offer computer-less connection to multiple IP cameras for efficient video management in security and surveillance environments.



In-house optical bonding

EIZO has an in-house production line for optical bonding, which allows the company to continue to meet the needs of professionals while ensuring each product maintains high quality standards at all times.



EIZO – THE VISUAL TECHNOLOGY COMPANY

EIZO has been setting standards in image quality, ergonomics, durability and environmental awareness for almost five decades. We are continually optimizing our products and we do not outsource any of our vital work as part of our highly developed manufacturing process.

R&D

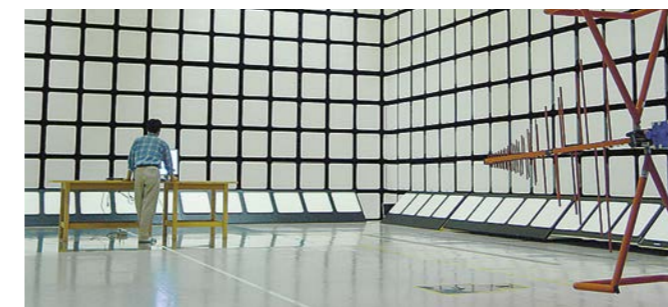
To incorporate the latest technologies in our products, we follow a unique in-house research and development production model.

Manufacturing

Our in-house manufacturing combines manual and automated operations to ensure high quality products are made as efficiently as possible.

Quality Control

We use our own anechoic chambers to confirm that our products comply with international regulations covering electromagnetic interference (EMI) and susceptibility. We also conduct long-life testing where our monitors are kept powered on for thousands of hours and their image quality is checked regularly.



Industry-specific solutions

We offer extensive customization for select monitors to meet the diverse requirements of various markets, including mission-critical fields such as maritime and air traffic control.

Global Reach

EIZO products are highly regarded in many specialty fields throughout the world because of their accurate and stable image display. EIZO is based in Japan and is represented in over 80 countries by a network of group companies and exclusive distributors.

Five years guarantee. Zero worries.

As a result of constant research, further development and painstaking quality controls, EIZO is able to offer a five-year guarantee for most models, including an on-site replacement service. That's up to three years more than other brands. For you, this means the highest possible investment security and lower TCO (total cost of ownership). Although the purchase price could be higher, the investment and service costs are lower with an EIZO monitor because the life cycle is substantially longer and fewer repairs are necessary.



EIZO Europe GmbH – Germany
Helmut-Grashoff-Str. 18
41179 Mönchengladbach
Phone: +49 2161 8210-0
www.eizo.de

EIZO Austria GmbH – Austria, Hungary, Romania & Bulgaria
Pfarrgasse 87
1230 Wien
Phone: +43 1 6152886-10
www.eizo.at, www.eizo.hu

EIZO Europe GmbH – Belgium & Luxembourg
Antwerpsesteenweg 22
2860 Sint-Katelijne-Waver (Mechelen)
Phone: +32 15 645511
www.eizo.be

EIZO Europe GmbH – Czech Republic & Slovakia
Meteor Centre Office Park "B"
Sokolovská 100/94
186 00 Praha 8
Phone: +420 222 319 714
www.eizo.cz, www.eizomonitor.sk

EIZO Europe GmbH – Succursale per l'Italia
Via Torino, 3/5
20814 – Varedo (MB)
Phone: +39 0362 1695250
www.eizo.it

EIZO Europe GmbH – The Netherlands
Dr. Holtropaan 38
5652 XR Eindhoven
Phone: +31 40 7600-360
www.eizo.nl

