



FCS-4044 Version: 1

! Power supply unit is to be ordered separately.

## HUBBLE PTZ Dome IP Network Camera, 5-Megapixel, 802.3af PoE, 10X Optical Zoom, two- way audio, Indoor/Outdoor



1

1. Lens  
2. Ethernet



2

3

4

3. Power Input  
4. Digital Input / Output and Audio-In / Audio-Out

### Key Features

- Built-in Micro SDHC/SDXC card slot for local storage
- Weatherproof IP66-rated housing
- 5-Megapixel high-definition resolution
- 
- Features WDR (Wide Dynamic Range) to enhance visibility under extremely bright or dark environments
- Supports 350° pan, 180° tilt and 10X optical zoom
- Video compression: H.264, MJPEG
- Removable IR-cut filter for day and night surveillance
- Dual power support: 12V DC/PoE (IEEE 802.3af)
- Free surveillance and CMS (Central Management System) software packages with 64-channel license



## Specifications

### System Specifications

#### Standards & Protocols:

IEEE 802.3 10-BASE-T, Ethernet  
IEEE 802.3u 100-BASE-TX, Fast Ethernet  
IEEE 802.3af Power over Ethernet (PoE)  
TCP, UDP, HTTP, HTTPS, DHCP, PPPoE, RTP, RTSP, IPv6, DNS, DDNS, NTP, ICMP, ARP, IGMP, SMTP, FTP, UPnP, SNMP, Bonjour

#### Image Sensor:

5-Megapixel 1/3.2" Progressive Scan CMOS

#### Lens:

Zoom, DC iris, Auto focus, f4.9-49mm, F1.8-3.0

#### Port:

1 x RJ-45 10/100 Mbps PoE port  
1 x Line In  
1 x Line Out  
1 x Power terminal block  
I/O terminal block (1 DI/1 DO)  
1 x MicroSDHC/ MicroSDXC card slot

#### Button/Knob:

Reset Button

#### Indicator:

Power

#### IR Cut Filter:

Removable infrared-cut filter for day & night function

#### Shutter Time:

1/5 ~ 1/10,000 sec

#### Angle of View:

49.69 - 5.83°

#### Pan/Tilt/Zoom:

Pan range: -175° - 175° (without auto-flip)  
Tilt range: 0° ~ 180° (with E-flip)  
10x Optical Zoom

#### Video Compression:

H.264 / MJPEG

#### Resolution:

5M (2592x1944)

#### Output Video Format:

RAW

#### Audio Compression:

G.711

#### Power Input:

DC12V / 802.3af PoE

#### Power Consumption:

PoE Class 3 (IEEE802.3af) / 12.95 W (built-in heater and fan on), DC 12V (adapter not included) / 10.36 W (built-in heater and fan on)

#### Data Rate:

10/100Mbps

**Storage Capacity:**  
SD/MicroSD memory card of up to 64GB

## Features

### General:

Backup: MicroSDHC /MicroSDXC card slot for local storage

### Video:

Image Setting: - Adjustable image size, quality and bit rate  
- Configurable brightness, sharpness, contrast, saturation, white balance and exposure  
- AGC/AWB/AES  
- Back Light Compensation (BLC)  
- Wide Dynamic Range (WDR), Basic WDR (74 dB)  
- 2D Noise Reduction (2DNR)  
Streaming: Up to 2 video streams

### Audio:

Streaming: 2-way audio  
Input/Output: line input, line output

## Performance

### Frame Rate (fps):

15 fps at 2592 x 1944; 15 fps at 2048 x 1536; 30 fps at 1920 x 1080; 30 fps at 1280 x 720; 30 fps at 640 x 480; 15 fps at 320 x 240

### Minimum illumination:

Color: 0.1 lux at F1.8  
B/W: 0.05 lux at F1.8

## Environment

### Operating Temperature (°C):

Operating: -20°C ~ 50°C

### Operating Humidity (Non-condensing):

Operating: 10% ~ 85%

### Installation:

Wall/Ceiling Mount

## Physical Specifications

### Dimensions (W x D x H mm):

153 x 116 x 153 mm

### Weight (g):

1263 g

## Approval and Compliance

### EMI/EMS:

CE, RoHS, FCC, ONVIF, IP67, NEMA 4X

### Environmental Test:

Weather proof IP67-rated housing

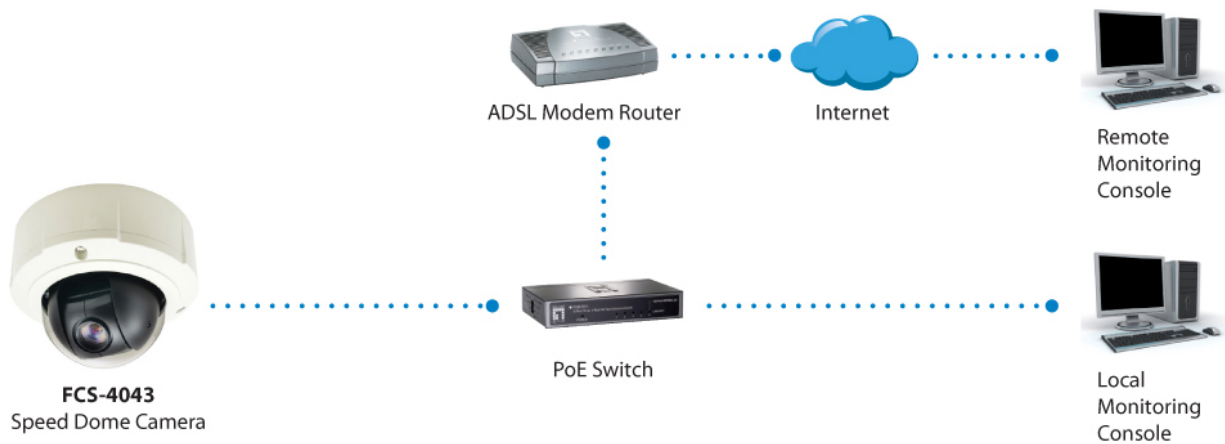
## Others

### Supported Browsers:

Microsoft Windows 8/7/Vista/XP



## Diagram



---

## Order Information

FCS-4044

---

## Package Contents

FCS-4044  
Screw Kit  
Quick Installation Guide  
Resource CD (User Manual, Utility, QIG)

---

## Optional Accessory



**CAS-2101**  
Pendant Cap



**CAS-2102**  
Pendant Mount Bracket



**CAS-2103**  
Pendant Mount Bracket



**CAS-2104**  
Extension Tube



**CAS-2314**  
Wall Mount Bracket



**CAS-2402**  
Corner Mount Bracket



**CAS-2503**  
Pole Mount Bracket, Clamping Range 5.25"-8.5"



**CAS-2702**  
Outdoor Junction Box



**CAS-3004**  
Flush Mount Bracket