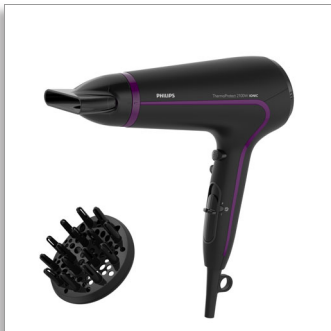




Philips ThermoProtect  
Ionic  
Hairdryer

**2100W**

ThermoProtect setting  
Ionic Care



HP8234/10

Fast dry at a lower temperature with ThermoProtect

with 14mm styling nozzle

Protect your hair while enjoying fast drying results. Multiple heat and speed settings give the blow dry you want. Features ThermoProtect for fast drying at a constant caring temperature and Ionic Care for frizz-free shine.

**Beautifully styled hair**

- Cool Shot sets your style
- Six flexible speed and temperature settings for full control
- Professional 2100W

**Less Hair Damage**

- ThermoProtect temperature setting
- Ionic conditioning for shiny, frizz-free hair

**Easy to use**

- 1.8 m power cord
- Removeable air flow filter makes cleaning quick and easy
- Easy storage hook for convenient storage

**PHILIPS**

# Highlights

## Cool Shot



A must-have professional function for hair stylists. The Cool Shot button provides an intense burst of cold air. It is used after styling to finish and set the style.

## ThermoProtect temperature



The ThermoProtect temperature provides the optimal drying temperature and gives additional protection from overheating the hair. With the same powerful airflow, you will get the best results in a caring way.

## 1.8 m cord



Convenient to use thanks to the 1.8m power cord length.

## Removeable air inlet filter



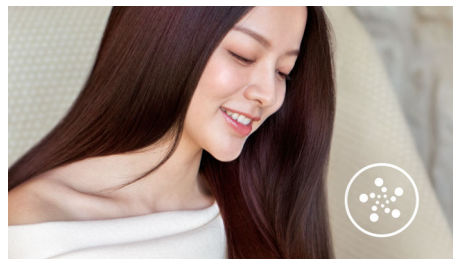
The removeable air flow filter of your hairdryer is easy to maintain. Simply click off to clean. Doing this regularly will prevent build up of dust and hair that can affect drying performance.

## Speed and temperature settings



The speed and heat required can be easily adjusted to create the perfect style. Six different settings ensure full control for precise and tailored styling.

## Ionic conditioning



Give your hair instant care with ionic conditioning. Charged negative ions eliminate static, condition your hair, and smooth the hair cuticles to intensify hair's shine and glossiness.

The result is smooth and frizz-free hair with beautiful shine.

## Easy storage hook



The rubberised hook is located at the base of the handle and provides another storage option, particularly convenient for use in the home or when staying at a hotel.

## 2100W



This 2100W professional hairdryer creates a powerful airflow. The resulting combination of power and speed makes drying and styling your hair quicker and easier.

# Specifications

## Technical specifications

- Voltage: 220-240 V
- Frequency: 50-60 Hz
- Wattage: 2100 W
- Power: 2100 W
- Color/finishing: High Gloss & Mat Black
- Housing material: ABS
- Motor: DC Motor
- Cord length: 1.8 m

## Features

- Foldable handle: No
- Cool shot
- Dual voltage: No
- Travel pouch: No
- Ceramic coating: No
- Ion conditioning
- Hanging loop

- Diffuser
- Nozzle / Concentrator: Slim styling 14mm nozzle
- Number of attachments: 2

## Service

- 2-year guarantee

## Weight & dimensions

- A-Box Dimensions: Length = 63cm, Width = 35cm, Height = 25cm
- A-Box Weight: 6.2kg
- F-Box Dimensions: Depth = 11cm, Height = 23cm, Width = 31cm
- F-Box weight: 0.9kg
- Product size: Width = 22cm, Height = 31cm, Length = 10cm
- Product weight (excl. pack): 0.6kg



Issue date 2018-03-28

Version: 2.0.1

EAN: 08 71010 36953 56

© 2018 Koninklijke Philips N.V.  
All Rights reserved.

Specifications are subject to change without notice.  
Trademarks are the property of Koninklijke Philips N.V.  
or their respective owners.

[www.philips.com](http://www.philips.com)