

DVI KVM Over IP Extender KE6900 / KE6940 / KE6900ST

- ATEN is well known for delivering innovative technologies that drive data connectivity and access management. To offer extreme flexibility into any working environment, we announced the new KVM Over IP Matrix System that combines KE Series Extenders (KE6900, KE6940 and KE6900ST) with the KE Management Software (CCKM). This system is designed to deliver the ultimate in flexibility when extending, controlling and monitoring access to multiple computers, in a multitude of ways, across a network.

KE Series Extenders give extended access to a computer from a remote USB console (USB keyboard, USB mouse, DVI monitor) anywhere over a network. As an IP-based matrix Extender, it can connect in many different ways, to fulfill different working environments, such as one-to-one (Extender mode), one-to-many (Splitter mode), many-to-one (Switch mode), or many-to-many (Matrix mode). The KE6900 Single display Extender supports one DVI display at each end. The KE6940 Dual display Extender supports two DVI displays at each end, allowing the video to display on two monitors. The KE6900ST DVI KVM over IP Extender Slim is a compact and affordable transmitter which can be paired with any KE69x0R unit for a savings based solution that stays within budget.

The KE Management Software (CCKM) provides KE Extenders with advanced features for username/password authentication, auto detection of all KE Series Extenders on the same subnet and the ability to define different types of connections that can be switched and shared. New security features also provide extra protection, supporting AES-128 bits encryption for secured data transmissions, while RADIUS, LDAP, AD or remote user authentication provides an added layer of enhanced security.

Whether you're monitoring, operating, controlling or extending computer access, the KVM Over IP Matrix System is made adaptable, to fit an endless variety of working environments and workstation settings, to provide solutions in broadcasting, control center, multimedia, manufacturing and many other industries where matrix extending is required.

KE6940T/R Front View



KE6940T/R Rear View



KE6900ST Front View



KE6900ST Rear View



Features

Hardware

- Boundless Switching - simply move the mouse cursor across screen boundaries to switch between different receivers (Rx) (KE6900/KE6940)
- Advance processor provides lossless and low latency video transmissions up to 1920 x 1200 @ 60Hz
- Supports digital (DVI) or analog (VGA) video output (KE6900/KE6940)
- Audio Enabled – supports stereo speakers and microphone (KE6900/KE6940 only)
- High speed Virtual Media Support
- Auto-MDIX – automatically detects cable type
- Built-in 8KV/15KV ESD protection and 2KV surge protection
- Fanless design for silent operations that are energy efficient
- Mounting options:
 - 2X-021G Dual Rack Mount Kit (KE6900/KE6940)
 - 2X-031G Single Rack Mount Kit (KE6900/KE6940)
 - VE-RMK 1U Extender Rack Mount Kit* (KE6900ST)
 - An industrial-grade power adapter included – supports operating temperature of 0°C~ 50°C to ensure durability and adaptability under harsh environmental conditions (KE6900/KE6940 only)

Note: *Refer to www.aten.com for more regarding the VE-RMK 1U Extender Rack Mount Kit.

Management

- Local console – flexible local or over IP console access (KE6900T/KE6940T only)
- EDID Expert™ – selects optimum EDID settings for smooth power-up and highest quality display
- Selectable Access Mode for multiple simultaneous access – Exclusive/Occupy/Share mode
- Advanced User Authority Settings – administrators can set four types of permissions to meet the users' requirements
- On-screen Preview – allows users to view the video of up to 36 displays on one screen
- Fast Switching – switch between different remote video resolutions on a local display within 0.3 seconds
- Extensive Bit Rate Management – allows you to increase/decrease the video quality to adjust for better network performance
- Command Line Interface – administrators can control all KE devices via RS-232 or TCP/IP using a CLI or 3rd party application
- Supports Hotkey Commands
- Flashing LED and beeping feature helps locate and identify devices
- KE devices can “Push” and “Pull” to share content

Security

- Dedicated LAN port for KE direct connections – can be isolated from the corporate network
- Secure data transmission – AES-128 bit encryption to secure all data before its transmitted over a network and decrypts the data on the receiver
- Supports industry standard Transport Layer Security (TLS) protocol

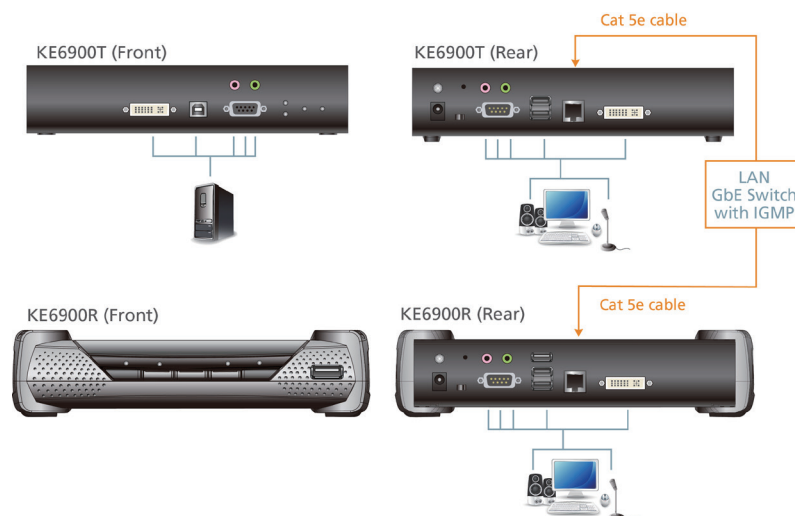
Virtual Media

- Virtual media enables file transfers, OS patching, software installations and diagnostic testing
- Supports USB 2.0 DVD/CD drives, USB mass storage devices, PC hard drives and ISO images
- Supports Smart Card/CAC Reader

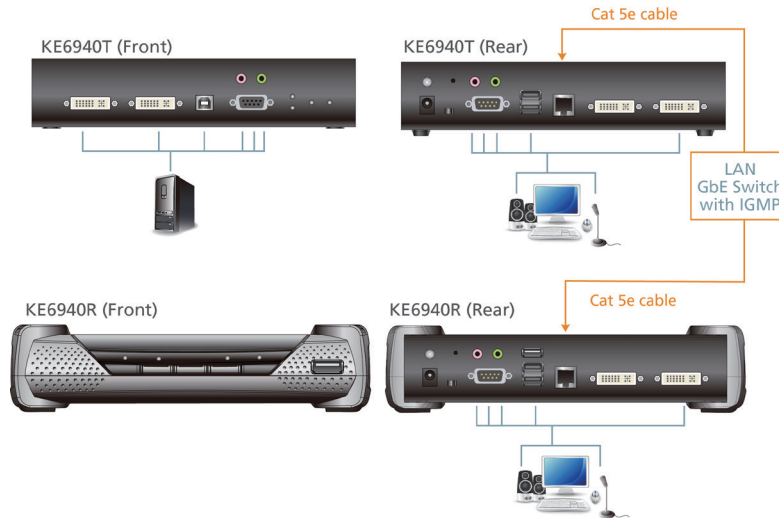
Highlights

Over IP	Extend a computer's KVM console any distance over a LAN by connecting the TX and RX units to your network. Extend a computer's KVM console up to 100 meters by directly connecting the TX and RX units with a single Cat 5e cable.
Flexibility	The KE6900 / KE6940 series allows you to access, share, and switch full control of TX connected computers - from any RX (KVM console) on the network. Flexibly allows One-to-One, One-to-Many, Many-to-One, or Many-to-Many computer to KVM console connections.
Unprecedented Video Quality	ATEN's advanced graphics processor delivers video that ensures you will experience the same vivid and sharp quality on the remote monitor no matter how far away the console is located.
Advanced Management System	The KE Management Software allows you to easily administer all KE6900 / KE6940 / KE6900ST devices over a network, using an intuitive user-friendly web based GUI.
Point-to-Point	Extender mode: This is the simplest setup; using a single transmitter to receiver connection that extends a computer's distance from the keyboard, mouse and monitor. One-to-one setups can be directly connected by a Cat 5e cable between two units - up to 100 meters.
Point-to-Multipoint	Shared Connection: This setup over a network allows a remote computer (TX) to be shared among multiple KVM consoles (RX). Multiple KVM consoles can access the computer at the same time and you can define the access mode when this happens:
Multipoint-to-Point	Switching Connections: This setup over a network allows the KVM consoles to switch access between different computers individually and simultaneously; and allows the streaming of Video, Audio, USB, and Serial connections from different computers.
Multipoint-to-Multipoint	Matrix mode: Delivering flexibility and performance ATEN's KVM Over IP Extender provides the ability to access, switch, share and multicast computer resources among multiple KVM consoles across a network. This provides dynamic and flexible extender setups with superior video quality and smooth KVM operations without delays or lags.

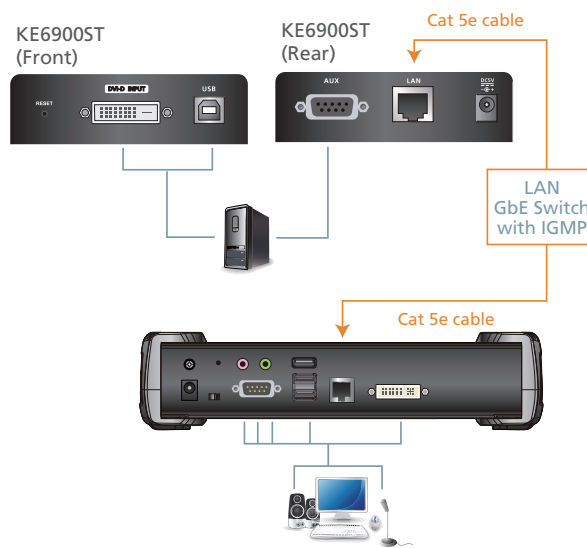
KE6900 Diagram



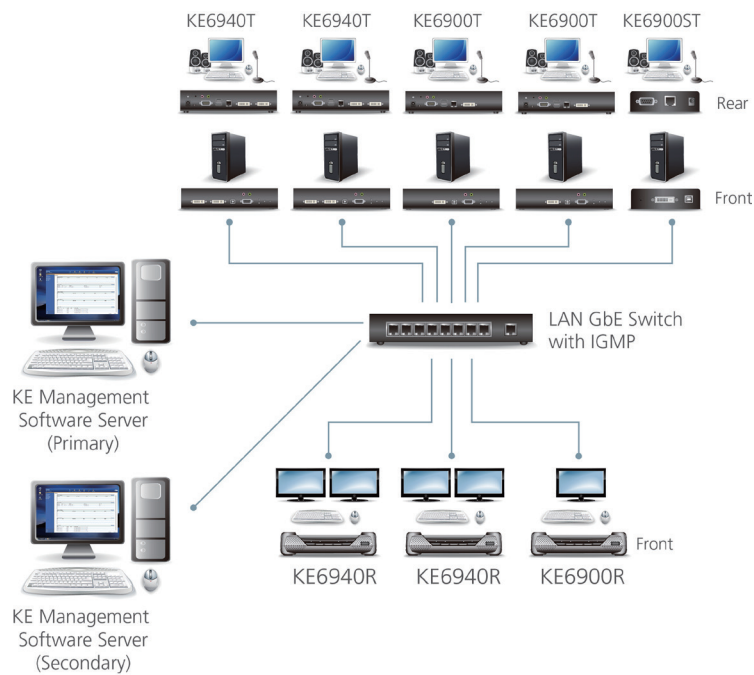
KE6940 Diagram



KE6900ST Diagram



Reference Installation Diagram



Specifications

Function	KE6900R	KE6900T	KE6940R	KE6940T	KE6900ST
Connectors					
Console Ports	2 x USB Type A Female (White) 1 x DVI-I Female (White) 1 x Mini Stereo Jack (Green) 1 x Mini Stereo Jack (Pink) 1 x DB-9 Male (Black)	2 x USB Type A Female (White) 1 x DVI-I Female (White) 1 x Mini Stereo Jack (Green) 1 x Mini Stereo Jack (Pink) 1 x DB-9 Male (Black)	2 x USB Type A Female (White) 2 x DVI-I Female (White) 1 x Mini Stereo Jack (Green) 1 x Mini Stereo Jack (Pink) 1 x DB-9 Male (Black)	2 x USB Type A Female (White) 2 x DVI-I Female (White) 1 x Mini Stereo Jack (Green) 1 x Mini Stereo Jack (Pink) 1 x DB-9 Male (Black)	N/A
KVM Ports	N/A	1 x USB Type B Female (White) 1 x DVI-I Female (White) 1 x Mini Stereo Jack (Green) 1 x Mini Stereo Jack (Pink) 1 x DB-9 Female (Black)	N/A	1 x USB Type B Female (White) 2 x DVI-I Female (White) 1 x Mini Stereo Jack (Green) 1 x Mini Stereo Jack (Pink) 1 x DB-9 Female (Black)	1 x USB Type B Female (White) 1 x DVI-D Female (White) 1 x DB-9 Female (Black)
Power	1 x DC Jack (Black)	1 x DC Jack (Black)	1 x DC Jack (Black)	1 x DC Jack (Black)	1 x DC Jack (Black)
LAN Ports	1 x RJ-45 (Black)	1 x RJ-45 (Black)	1 x RJ-45 (Black)	1 x RJ-45 (Black)	1 x RJ-45 (Black)
Virtual Media	2 x USB Type A Female (White)	N/A	2 x USB Type A Female (White)	N/A	N/A
Switches					
OSD	1 x Pushbutton	N/A	1 x Pushbutton	N/A	N/A
Video	1 x Pushbutton	N/A	1 x Pushbutton	N/A	N/A
Graphics	1 x Pushbutton	N/A	1 x Pushbutton	N/A	N/A
Reset	1 x Semi-recessed Pushbutton				
LEDs					
Link	1 (Green / Orange)				
Power	1 (Blue)				
Local	1 (Green)	1 (Green)	1 (Green)	1 (Green)	N/A
Remote	1 (Green)	1 (Green)	1 (Green)	1 (Green)	N/A
Emulation					
Keyboard / Mouse	USB				
Video Resolution	Up to 1920 x 1200 @ 60 Hz				
Power Consumption	DC 5V				
Environmental					
Operating Temperature	0° to 50° C				
Storage Temperature	-20° to 60° C				
Humidity	0 - 95% RH, Non-condensing				
Physical Properties					
Housing	Metal				
Weight	1.25 kg	1.14 kg	1.25 kg	1.15 kg	0.43 kg
Dimensions (L x W x H)	22.75 x 17.16 x 5.48 cm	21.50 x 16.29 x 4.18 cm	22.75 x 17.16 x 5.48 cm	21.50 x 16.29 x 4.18 cm	14.39 x 10.30 x 3.00 cm

