



Philips Sonicare 3 Series
gum health
Sonic electric toothbrush

1 mode

3 intensity settings
1 brush head



HX6631/01

Protects gum health

*more than manual brushing

Provides superior plaque removal and gum care in an easy-to-use power toothbrush, while offering your most comfortable brushing experience

Maintains gum health better than a manual toothbrush

- Sonicare dynamic cleaning action drives fluid between teeth
- Removes up to 6X more plaque along the gumline than a manual toothbrush
- Better than a manual toothbrush for gingivitis

Guides you to follow dentist recommendations

- SmarTimer helps you meet recommended brushing time
- Quadpacer interval timer encourages thorough brushing

Offers a customised brushing experience

- Three intensity settings for a gentle experience

Recommended by dental professionals world wide

- Protects gum health
- Safe on orthodontics, dental work and veneers

PHILIPS

sonicare

Sonic electric toothbrush
1 mode 3 intensity settings, 1 brush head

HX6631/01

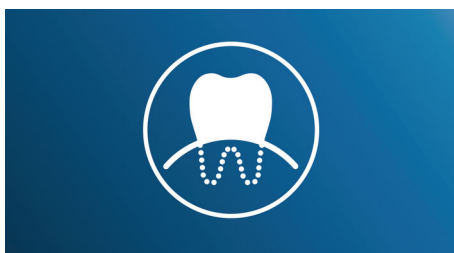
Highlights

Protects gum in health



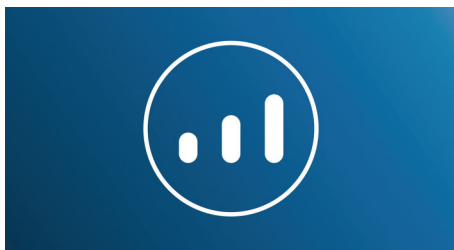
Protects gum health

Protects gum health



With superior plaque removal along the gum line, this toothbrush can both protect and maintain gum health

Three intensity settings



With three customisable intensity settings (low, medium & high) you can select the right power level to ensure that brushing along the gumline is comfortable. After 1.5 seconds of brushing, you will have to push twice on button to switch mode. Once to pause and second to switch.

Up to 6x better plaque removal



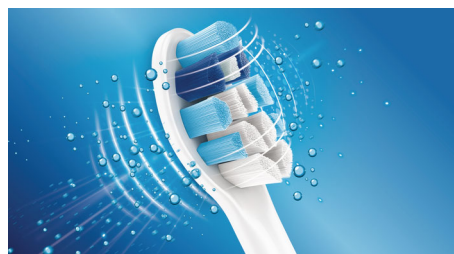
Removes up to 6X more plaque along the gumline than a manual toothbrush.

Sonic technology



Our sonic technology creates a unique dynamic cleaning action that drives fluid deep between teeth and along the gumline for a thorough-yet-gentle clean

Safe and gentle



The gentle motion of this Philips Sonicare power toothbrush is safe for dental work, including orthodontics, implants and veneers, so you can brush without worry.

SmarTimer



This Philips Sonicare power toothbrush features a special SmarTimer to help you meet the dentist-recommended brushing time of two minutes

Quadpacer



Features a Quadpacer interval timer to help encourage thorough brushing of the entire mouth. The toothbrush beeps every 30 seconds, signifying it's time to move to another area of the mouth.

Specifications

Modes

- Clean: For exceptional everyday clean
- 3 intensities: Low, Medium, High

Items included

- Handles: 1 3 Series gum health
- Brush heads: 1 ProResults gum health
- Charger: 1

Design and finishing

- Color: Persian Green

Cleaning performance

- Speed: Up to 31000 brush movement/min
- Performance: Removes up to 6X more plaque than a manual toothbrush
- Health benefits: Protects gum health
- Timer: SmarTimer and Quadpacer

Ease of use

- Brush head system: Easy click-on brush heads
- Brushing time: Up to 3 weeks
- Battery indicator: Light shows battery status
- Handle: Slim ergonomic design

Technical specifications

- Battery: Rechargeable
- Battery type: Lithium ION
- Operating time (full to empty): Up to 3 weeks

Power

- Voltage: 110-220 V

Service

- Warranty: 2-year limited warranty



Issue date 2018-12-02

Version: 6.1.1

© 2018 Koninklijke Philips N.V.
All Rights reserved.

Specifications are subject to change without notice.
Trademarks are the property of Koninklijke Philips N.V.
or their respective owners.

www.philips.com

* than a manual toothbrush

* based on two periods of two-minute brushings per day, on clean mode