

Always there to help you

Register your product and get support at
www.philips.com/support



BTM5120



User manual

PHILIPS

Contents

1 Important	2
Safety	2
2 Your micro system	3
Introduction	3
What's in the box	3
Overview of the main unit	3
Overview of the remote control	4
3 Get started	6
Connect speakers	6
Connect FM antenna	6
Connect power	6
Demonstrate the features	7
Prepare the remote control	7
Set clock	7
Turn on	7
4 Play	8
Play from disc	8
Play from USB	8
Control play	9
Skip to a track	9
Program tracks	9
Play from Bluetooth-enabled devices	9
5 Listen to the radio	11
Tune to a radio station	11
Program radio stations automatically	11
Program radio stations manually	11
Select a preset radio station	11
Display RDS information	11
6 Other features	12
Set the alarm timer	12
Set the sleep timer	12
Listen to an external device	12

7 Product information	14
Specifications	14
USB playability information	15
Supported MP3 disc formats	15

1 Important

Safety

- Make sure that there is enough free space around the product for ventilation.
- Only use attachments or accessories specified by the manufacturer.
- Battery usage CAUTION – To prevent battery leakage which may result in bodily injury, property damage, or damage to the product:
 - Install the batteries correctly, + and - as marked on the product.
 - Do not mix batteries (old and new or carbon and alkaline, etc.).
 - Remove the batteries when the product is not used for a long time.
 - The batteries shall not be exposed to excessive heat such as sunshine, fire or the like.
- Use only power supplies listed in the user manual.
- The product shall not be exposed to dripping or splashing.
- Do not place any sources of danger on the product (e.g. liquid filled objects, lighted candles).
- Where the mains plug or an appliance coupler is used as the disconnect device, the disconnect device shall remain readily operable.



Warning

- Never remove the casing of this device.
- Never lubricate any part of this device.
- Never place this device on other electrical equipment.
- Keep this device away from direct sunlight, naked flames or heat.
- Never look into the laser beam inside this device.
- Ensure that you always have easy access to the power cord, plug, or adaptor to disconnect this device from the power.

2 Your micro system

Congratulations on your purchase, and welcome to Philips! To fully benefit from the support that Philips offers, register your product at www.philips.com/welcome.

Introduction

With this unit, you can:

- enjoy audio from discs, Bluetooth-enabled devices, USB storage devices, or other external devices;
- listen to FM radio stations.

You can enrich sound output with below sound effect:

- Digital Sound Control (DSC)
 - DSC 1: Balanced
 - DSC 2: Clear
 - DSC 3: Powerful
 - DSC 4: Warm
 - DSC 5: Bright

The unit supports these media formats:

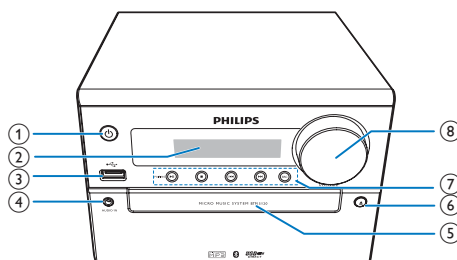


What's in the box

Check and identify the contents of your package:

- Main unit
- 2 x speakers
- Power cord
- 3.5mm audio cable
- FM antenna
- Remote control (with one AAA battery)
- Printed materials

Overview of the main unit



- ① **Power**
 - Turn on the product.
 - Switch to standby mode or Eco power standby mode.
- ② **Display panel**
 - Show the current status.
- ③ **USB**
 - Connect USB storage devices.
 - Charge your portable device.
- ④ **AUDIO IN**
 - Connect an external audio device.
- ⑤ **Disc compartment**
- ⑥ **Disc compartment button**
 - Open or close the disc compartment.
- ⑦ **FM antenna**
- ⑧ **Headset jack**

⑦ SRC

- Select a source: DISC, USB, TUNER, AUDIO IN, AUX, BT (Bluetooth).



- Start, pause, or resume play.
- In BT mode, press and hold for more than 3 seconds to enter pairing mode.



- Stop play or erase a program.
- In standby mode, turn on/off feature demonstration.

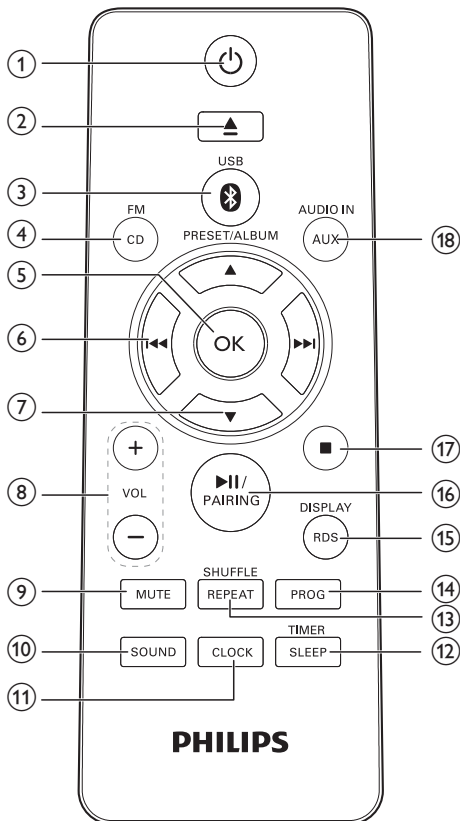


- Skip to previous/next track.
- Search within a track from the disc, USB or BT mode.
- Tune to a radio station.
- Press and hold to tune to the next available radio station.

⑧ VOLUME

- Adjust volume.
- Adjust time.

Overview of the remote control



① 𐀀

- Turn on the unit, or switch to Standby mode, or switch to Eco Power mode.

② ▲

- Open or close the disc compartment.

③ USB/ 𐀀

- Select the USB or Bluetooth source.

④ CD/FM

- Select the disc source.
- Select the FM radio source.

⑤ OK

- Confirm selection.
- Switch between STEREO and MONO in tuner source.

⑥ ⏮ / ⏭

- Skip to the previous/next track.
- Press and hold to search within a track from the disc, USB or BT source.
- Tune to a radio station.
- Press and hold to tune to the next available radio station.

⑦ PRESET/ALBUM ▲ / ▼

- Skip to the previous/next album.
- Select a preset radio station.
- Adjust time.

⑧ VOL -/+

- Adjust volume.
- Adjust time.

⑨ MUTE

- Mute or restore volume.

⑩ SOUND

- Select a preset sound setting.

⑪ CLOCK

- Set clock in standby mode.
- Display the current time in any source.

⑫ SLEEP/TIMER

- Set the sleep timer.
- Set the alarm timer.

⑬ REPEAT/SHUFFLE

- Select the repeat play mode.
- Select the random play mode.

⑭ PROG

- Program tracks in disc/USB source.
- Program radio stations manually.
- Press and hold to start automatic scan of all available radio stations.

⑮ RDS/DISPLAY

- Select RDS broadcast information.
- Synchronize clock with RDS station.
- Select display information during play.
- Adjust display brightness in standby mode.

⑯ ►||

- Start or pause play.
- In BT mode, press and hold for more than 3 seconds to enter pairing mode.

⑰ ■

- Stop play or erase a program.

⑱ AUX/AUDIO IN

- Select the AUX or AUDIO IN source.

3 Get started

! Caution

- Use of controls or adjustments or performance of procedures other than herein may result in hazardous radiation exposure or other unsafe operation.

Always follow the instructions in this chapter in sequence.

If you contact Philips, you will be asked for the model and serial number of this apparatus. The model number and serial number are on the back of the apparatus. Write the numbers here:

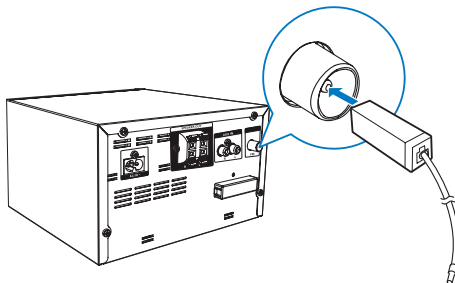
Model No. _____

Serial No. _____

Connect FM antenna

* Tip

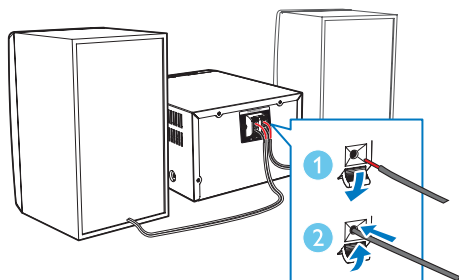
- For optimal reception, fully extend and adjust the position of the antenna.
- For better FM stereo reception, connect an outdoor FM antenna to the **FM AERIAL** socket.



Connect speakers

≡ Note

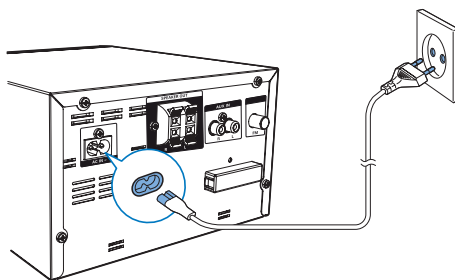
- For optimal sound, use the supplied speakers only.
- Connect only speakers with impedance that is the same or higher than the supplied speakers. Refer to the Specifications section of this manual.



Connect power

! Caution

- Risk of product damage! Ensure that the power supply voltage corresponds to the voltage printed on the back or the underside of the unit.
- Risk of electric shock! When you unplug the AC power cord, always pull the plug from the socket. Never pull the cord.
- Before you connect the AC power cord, ensure that you have completed all other connections.



Demonstrate the features

- In standby mode, press and hold **■** on the front panel for more than 15 seconds to demonstrate features of this device.
 - The features are displayed one by one across the display panel.
- To turn off the demonstration, press **■** on the front panel again.

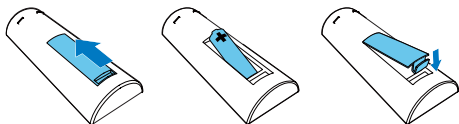
Prepare the remote control

! Caution

- Risk of explosion! Keep batteries away from heat, sunshine or fire. Never discard batteries in fire.
- Risk of decreased battery life! Never mix different brands or types of batteries.
- Risk of product damage! When the remote control is not used for long periods, remove the batteries.

To insert the remote control battery:

- Open the battery compartment.
- Insert the supplied AAA battery with correct polarity (+/-) as indicated.
- Close the battery compartment.



Set clock

- In standby mode, press and hold **CLOCK** on the remote control for more than two seconds.
 - [**CLOCK 24**] or [**CLOCK 12**] hour format is displayed.
- Press **PRESET/ALBUM ▲ / ▼** to select the 12 or 24 hour format.

- press **CLOCK** to confirm.
 - The hour digits are displayed and begin to blink.
- Repeat steps 2-3 to set the hour and minute.



Note

- If no button is pressed in 90 seconds, the system exits clock setting mode automatically.



Tip

- You can view clock information in power-on mode by pressing **CLOCK**.

Turn on

- Press **⏻**.
 - The device switches to the last selected source.

Switch to standby mode

- Press **⏻** again to switch the device to standby mode.
 - The clock (if set) is displayed on the panel.

Switch to ECO standby mode:

- Press and hold **⏻** for more than two seconds.
 - The display panel is dimmed.



Note

- The device switches to Eco Power Standby mode after 15 minutes in standby mode.
- In Eco Power Standby mode, when you connect a mobile device to the USB socket, the device switches to charging mode.

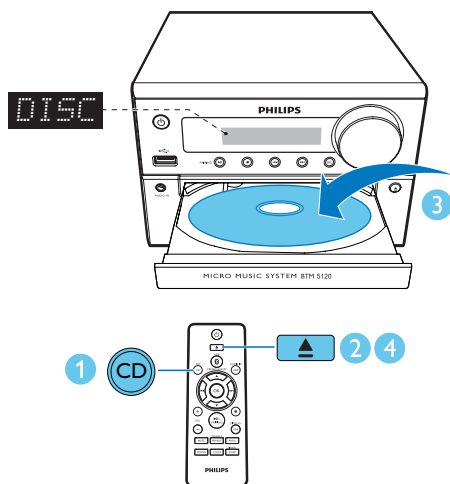
Switch between standby mode and ECO standby mode:

- Press and hold **⏻** for more than two seconds.

4 Play

Play from disc

- 1 Press **CD/FM** to select the **CD** source.
- 2 Press **▲** to open the disc compartment.
- 3 Insert a disc with the printed side facing upward.
- 4 Press **▲** to close the disc compartment.
↳ Play starts automatically. If not, press **▶||**.




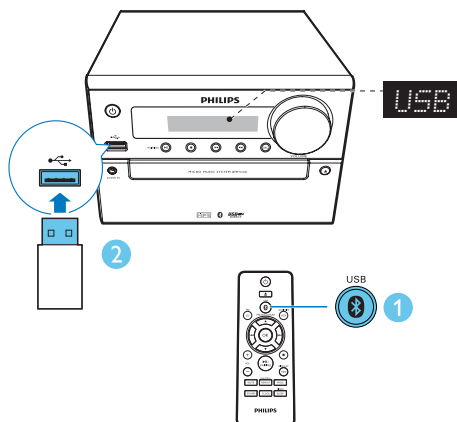
Play from USB

Note

- Make sure that the USB device contains playable audio content.

- 1 Press **USB/0** repeatedly to select the **USB** source.

- 2 Insert a USB device into the  socket.
↳ Play starts automatically. If not, press **▶||**.

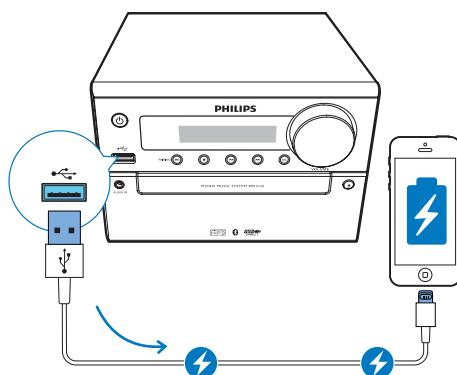


Charge your device

You can charge your device through the USB socket on this product with a USB cable (not supplied).

Note

- The maximum current for USB charging is 1 A.
- Not all devices for USB charging are guaranteed.



Control play

PRESET/ ALBUM ▲ / ▼	Select a folder;
◀◀ / ▶▶	Select an audio file.
▶ 	Pause or resume play.
■	Stop play.
REPEAT/ SHUFFLE	Select the repeat or random play mode..
VOL -/+	Increase or decrease the volume.
MUTE	Mute or restore sound.
SOUND	Enrich sound effect with DSC: balanced, clear, powerful, warm, and bright.
RDS/DISPLAY	Select display information during play.
	Adjust display brightness in standby mode.

Skip to a track

For CD:

- Press **◀◀ / ▶▶** to select another track.

For MP3 disc and USB:

- Press **PRESET/ALBUM ▲ / ▼** to select an album or a folder.
- Press **◀◀ / ▶▶** to select a track or a file.

Program tracks

You can program a maximum of 20 tracks.

- Stop play, then press **PROG** to activate the program mode.
- For MP3 tracks, press **PRESET/ALBUM ▲ / ▼** to select an album.
- Press **◀◀ / ▶▶** to select a track, and then press **PROG** to confirm.

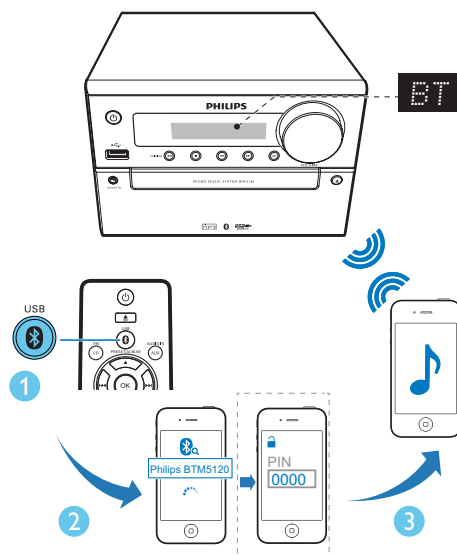
- Repeat steps 2-3 to program more tracks.
- Press **▶||** to play the programmed tracks.
 - During play, **[PROG]** (program) is displayed.
 - To erase the program, press **■** once to stop music play, then press **■** again.

Play from Bluetooth-enabled devices



Note

- The effective operation range between the unit and your Bluetooth enabled device is approximately 10 meters (30 feet).
- Any obstacle between the system and the device can reduce the operational range.
- Compatibility with all Bluetooth devices is not guaranteed.



- Press **USB/ 0** repeatedly to select the **Bluetooth** source.
 - [BT]** (Bluetooth) is displayed.
 - The Bluetooth indicator flashes blue.

- 2 On your device that supports Advanced Audio Distribution Profile (A2DP), enable Bluetooth and search for Bluetooth devices that can be paired (refer to the user manual of the device).
- 3 Select '**PHILIPS BTM5120**' on your Bluetooth enabled device and if necessary input '0000' as the pairing password.
 - ↳ After successful pairing and connection, the Bluetooth indicator turns solid blue, and the unit beeps.
- 4 Play audio on the connected device.
 - ↳ Music streams from your Bluetooth enabled device to this unit.



Tip

- The unit can memorize up to 4 previously connected Bluetooth devices.
- The unit can connect to 3 Bluetooth devices at the same time.

To disconnect the Bluetooth-enabled device:

- Deactivate Bluetooth on your device; or
- Move the device beyond the communication range
 - ↳ The current Bluetooth connection is disconnected.

To pair with another Bluetooth-enabled device:

- Press and hold ►|| for 3 seconds.
 - ↳ The unit switches to pairing mode, ready for pairing with a new Bluetooth-enabled device.

To clear Bluetooth pairing history:

- Press and hold ■ for 10 seconds.
 - ↳ The current Bluetooth is cleared.

5 Listen to the radio

Tune to a radio station



Tip

- Position the antenna as far as possible from TV, or other radiation sources.
- For optimal reception, fully extend and adjust the position of the antenna.

- 1 Press **CD/FM** repeatedly to select the **FM** source.
- 2 Press and hold **◀◀** / **▶▶** for more than two seconds.
↳ The radio tunes to a station with strong reception automatically.
- 3 Repeat step 2 to tune to more stations.

To tune to a weak station:

- Press **◀◀** / **▶▶** repeatedly until you find optimal reception.

Program radio stations automatically



Note

- You can program a maximum of 20 preset radio stations (FM).

- In tuner mode, press and hold **PROG** for more than two seconds to activate automatic programming.
↳ All available stations are programmed in the order of waveband reception strength.
↳ The first programmed radio station is broadcast automatically.

Program radio stations manually

- 1 Tune to a radio station.
- 2 Press **PROG**, and then press **PRESET/ALBUM ▲** / **▼** to select a number from 1 – 20.
- 3 Press **PROG** to confirm.
↳ The preset number and the frequency of the preset station are displayed.
- 4 Repeat steps 2-3 to program more stations.



Note

- To overwrite a programmed station, store another station in its place.

Select a preset radio station

- In tuner mode, press **PRESET/ALBUM ▲** / **▼** to select a preset number.

Display RDS information

RDS (Radio Data System) is a service that allows FM stations to transfer additional information. If you tune to an RDS station, an RDS icon is displayed.

- 1 Tune to an RDS station.
- 2 Press **RDS/DISPLAY** repeatedly to scroll through the following information (if available):
↳ Program service
↳ Program type such as **[NEWS]** (news), **[SPORT]** (sport), **[POP M]** (pop music)...
↳ Radio text message
↳ Mono/Stereo
↳ Time

6 Other features

Set the alarm timer

This unit can be used as an alarm clock. You can select CD, FM, or USB as the alarm source.

Note

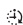
- Make sure that you have set the clock correctly.

- 1 In standby mode, press and hold **SLEEP/TIMER** for more than two seconds.
↳ A source for selection (**CD**, **FM**, or **USB**) is displayed and begins to blink.
- 2 Press **PRESET/ALBUM ▲ / ▼** repeatedly to select the alarm source.
- 3 Press **SLEEP/TIMER** to confirm.
↳ The hour digits are displayed and begin to blink.
- 4 Repeat steps 2-3 to set the hour, minute, and adjust volume.

Note

- If no button is pressed in 90 seconds, the system exits timer setting mode automatically.

To activate or deactivate the alarm timer:

- Press **SLEEP/TIMER** repeatedly to activate or deactivate the alarm.
↳ If timer is activated,  is displayed.

Tip

- If CD/USB source is selected, but no disc is placed or no USB connected, the system switches to the tuner source automatically.

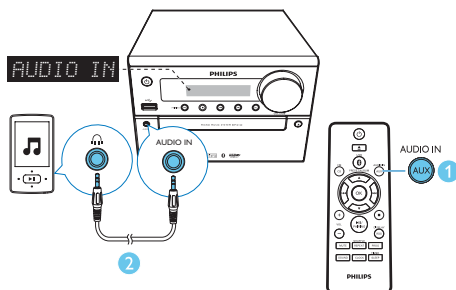
Set the sleep timer

- To set the sleep timer, in turn on mode, press **SLEEP/TIMER** repeatedly to select a set period of time (in minutes).
↳ When sleep timer is activated, **zz** is displayed. Otherwise, **zz** disappears.

Listen to an external device

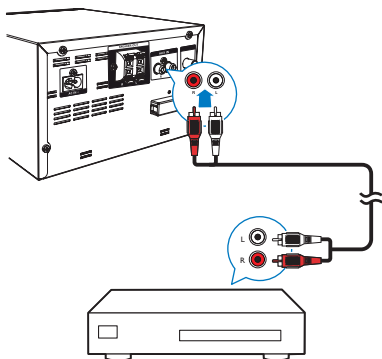
You can listen to an external device through this unit with a 3.5mm audio cable or RCA cables.

Listen through a 3.5mm audio cable



- 1 Press **AUX/AUDIO IN** repeatedly to select **AUDIO IN** source.
- 2 Connect the 3.5mm audio cable between:
 - the **AUDIO IN** socket (3.5 mm) on the unit,
 - and the headphone jack on an external device.
- 3 Start to play the device (see the device user manual).

Listen through RCA cables



- 1 Press **AUX/AUDIO IN** repeatedly to select **AUX** source.
- 2 Connect RCA cables (red/white) (not supplied) between:
 - the **AUX IN (L/R)** sockets on the unit,
 - and the audio output sockets on an external device.
- 3 Start to play the device (see the device user manual).

7 Product information

 Note

- Product information is subject to change without prior notice.

Specifications

Amplifier

Maximum Output Power	100W
Frequency Response	40Hz -16k Hz, ±3dB
Signal to Noise Ratio	> 77dBA
Total Harmonic Distortion	<1%
AUDIO IN Input	600mV RMS 22kohm

Disc

Laser Type	Semiconductor
Disc Diameter	12 cm/8 cm
Supported Discs	CD-DA, CD-R, CD-RW, MP3-CD
Audio DAC	24 Bits/44.1 kHz
Total Harmonic Distortion	<0.8% (1 kHz)
Frequency Response	40Hz - 16kHz (44.1kHz)
S/N Ratio	>77dBA

Bluetooth

Bluetooth Version	2.1 + EDR (with multi-pairing)
Bluetooth Frequency Band	2.4GHz ~ 2.48GHz ISM Band
Bluetooth Range	10 m (free space)

Tuner (FM)

Tuner Tuning Range	87.5-108 MHz
Tuner Tuning grid	50 KHz
Tuner Sensitivity	
- Mono, 26dB S/N Ratio	<22 dBf
- Stereo, 46dB S/N Ratio	<45 dBf
Search Selectivity	<28 dBf
Total Harmonic Distortion	<2%
Signal to Noise Ratio	>55 dB

Speakers

Speaker Impedance	6 ohm
Speaker Driver	10cm full range
Speaker Sensitivity	>84dB/m/W± 4dB/m/W

USB

USB Direct Version	Version 2.0HS, 5V 500mA
USB Charging	5V 1A

General information

AC power	100-240V, 50/60Hz
Operation Power Consumption	35 W
Eco Standby Power Consumption	<0.5 W
Dimensions	
- Main Unit (W x H x D)	200 x 120 x 243 mm
- Speaker Box (W x H x D)	160 x 243 x 206 mm
Weight	
- Main Unit	1.62 kg
- Speaker Box	2 x 2.1 kg

USB playability information

Compatible USB devices:

- USB flash memory (USB2.0 or USB1.1)
- USB flash players (USB2.0 or USB1.1)
- memory cards (requires an additional card reader to work with this unit)

Supported USB formats:

- USB or memory file format: FAT12, FAT16, FAT32 (sector size: 512 bytes)
- MP3 bit rate (data rate): 32-320 Kbps and variable bit rate
- Directory nesting up to a maximum of 8 levels
- Number of albums/ folders: maximum 99
- Number of tracks/titles: maximum 999
- File name in Unicode UTF8 (maximum length: 32 bytes)

Unsupported USB formats:

- Empty albums: an empty album is an album that does not contain MP3/WMA files, and will not be shown in the display.
- Unsupported file formats are skipped. For example, word documents (.doc) or MP3 files with extension .dlf are ignored and not played.
- WMA, AAC, WAV, PCM audio files
- DRM protected WMA files (.wav, .m4a, .m4p, .mp4, .aac)
- WMA files in Lossless format

Supported MP3 disc formats

- ISO9660, Joliet
- Maximum title number: 128 (depending on file name length)
- Maximum album number: 99
- Supported sampling frequencies: 32 kHz, 44.1 kHz, 48 kHz
- Supported Bit-rates: 32~256 (kbps), variable bit rates

8 Troubleshooting



Warning

- Never remove the casing of this device.

To keep the warranty valid, never try to repair the system yourself.

If you encounter problems when using this device, check the following points before requesting service. If the problem remains unsolved, go to the Philips Web page (www.philips.com/support). When you contact Philips, make sure that the device is nearby and the model number and serial number are available.

No power

- Make sure that the AC power cord of the device is connected properly.
- Make sure that there is power at the AC outlet.
- As a power-saving feature, the system switches off automatically 15 minutes after track play reaches the end and no control is operated.

No sound or poor sound

- Adjust the volume.
- Check that the speakers are connected correctly.
- Check if the stripped speaker wires are clamped.

No response from the unit

- Disconnect and reconnect the AC power plug, then turn on the unit again.

Remote control does not work

- Before you press any function button, first select the correct source with the remote control instead of the main unit.
- Reduce the distance between the remote control and the unit.

- Insert the battery with its polarities (+/- signs) aligned as indicated.
- Replace the battery.
- Aim the remote control directly at the sensor on the front of the unit.

No disc detected

- Insert a disc.
- Make sure that the disc is inserted with printed side facing upward.
- Wait until the moisture condensation at the lens has cleared.
- Replace or clean the disc.
- Use a finalized CD or correct format disc.

Cannot display some files in USB device

- The number of folders or files in the USB device has exceeded a certain limit. This phenomenon is not a malfunction.
- The formats of these files are not supported.

USB device not supported

- The USB device is incompatible with the unit. Try another one.

Poor radio reception

- Increase the distance between the unit and your TV or other radiation sources.
- Fully extend the FM antenna.

Music playback is unavailable on this unit even after successful Bluetooth connection.

- The device cannot be used to play music through this unit wirelessly.

The audio quality is poor after connection with a Bluetooth-enabled device.

- The Bluetooth reception is poor. Move the device closer to this unit or remove any obstacle between them.

Bluetooth cannot be connected with this unit.

- The device does not support the profiles required for this unit.
- The Bluetooth function of the device is not enabled. Refer to the user manual of the device to find out how to enable the function.
- This unit is not in pairing mode.
- This unit is already connected with another Bluetooth-enabled device. Disconnect that device and then try again.

The paired mobile device connects and disconnects constantly.

- The Bluetooth reception is poor. Move the device closer to this unit or remove any obstacle between them.
- Some mobile phones may connect and disconnect constantly when you make or end calls. This does not indicate any malfunction of this unit.
- For some devices, the Bluetooth connection may be deactivated automatically as a power-saving feature. This does not indicate any malfunction of this unit.

Timer does not work

- Set the clock correctly.
- Switch on the timer.

Clock/timer setting erased

- Power has been interrupted or the power cord has been disconnected.
- Reset the clock/timer.

9 Notice

Any changes or modifications made to this device that are not expressly approved by WOOX Innovations may void the user's authority to operate the equipment.

CE 0890

Hereby, WOOX Innovations declares that this product is in compliance with the essential requirements and other relevant provisions of Directive 1999/5/EC. You can find the Declaration of Conformity on www.philips.com/support.



Your product is designed and manufactured with high quality materials and components, which can be recycled and reused.



When this crossed-out wheeled bin symbol is attached to a product it means that the product is covered by the European Directive 2002/96/EC.

Please inform yourself about the local separate collection system for electrical and electronic products.

Please act according to your local rules and do not dispose of your old products with your normal household waste. Correct disposal of your old product helps to prevent potential negative consequences for the environment and human health.



Your product contains batteries covered by the European Directive 2006/66/EC, which cannot be disposed with normal

household waste. Please inform yourself about the local rules on separate collection of batteries because correct disposal helps to prevent negative consequences for the environmental and human health.

Environmental information

All unnecessary packaging has been omitted. We have tried to make the packaging easy to separate into three materials: cardboard (box), polystyrene foam (buffer) and polyethylene (bags, protective foam sheet.)

Your system consists of materials which can be recycled and reused if disassembled by a specialized company. Please observe the local regulations regarding the disposal of packaging materials, exhausted batteries and old equipment.



**Be responsible
Respect copyrights**

This item incorporates copy protection technology that is protected by U.S. patents and other intellectual property rights of Rovi Corporation. Reverse engineering and disassembly are prohibited.

Bluetooth

The Bluetooth® word mark and logos are registered trademarks owned by Bluetooth SIG, Inc. and any use of such marks by WOOX Innovations is under license.

This apparatus includes this label:



Note

- The type plate is located on the back of the device.



Specifications are subject to change without notice.
2014 © WOOX Innovations Limited. All rights reserved.
This product was brought to the market by WOOX
Innovations Limited or one of its affiliates, further referred
to in this document as WOOX Innovations, and is the
manufacturer of the product. WOOX Innovations is the
warrantor in relation to the product with which this booklet
was packaged. Philips and the Philips Shield Emblem are
registered trademarks of Koninklijke Philips N.V.

BTM5120_UM_12_V1.0

