

PHILIPS

产品: 飞利浦衣物去毛球器
 型号: GC028, GC029
 额定电压: 220 V~
 额定频率: 50 Hz
 额定输入功率: 5 W
 生产日期: 请见产品本体
 产地: 中国浙江余姚

飞利浦(中国)投资有限公司
 上海市天目西路218号1602-1605
 全国顾客服务热线: 4008 800 008

本产品根据国标 GB4706.1-2005,
 GB4706.9-2008制造

保留备用

发行日期: 141009

卸下充电电池

拧下螺钉, 打开机壳, 取出印刷电路板, 剪断金属接点, 分离电池。取出充电电池时, 必须切断产品的电源。

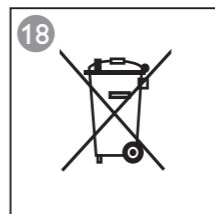
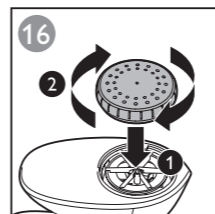
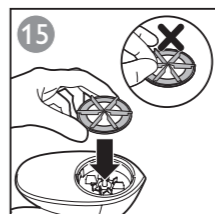
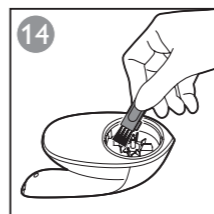
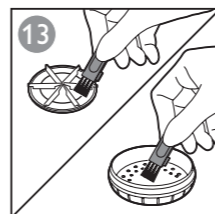
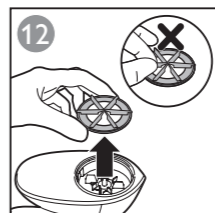
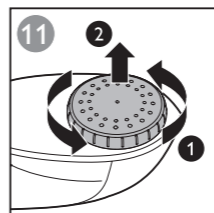
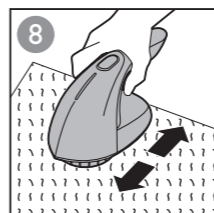
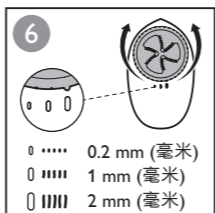
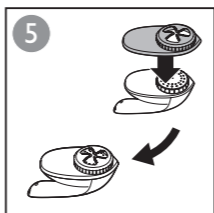
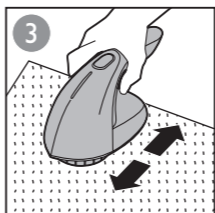
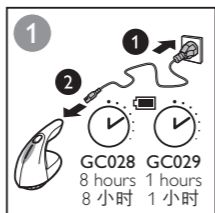
保修和支持

如果您需要信息或支持, 请访问 www.philips.com/support 或阅读单独的全球保修卡。

注意: 由于去毛刀头(刀片和刀片护罩)属于易磨损物品, 因此不在国际保修条款的涵盖范围之列。

故障检修

问题	可能的原因	解决方法
本产品不能去除毛球。	毛球在产品内部堆积。	清洁产品(图 11-15)。
刀片不转动。	毛球盒未正确推入本产品。 刀片罩未正确拧紧。	检查并确保毛球盒已正确推入本产品。 检查并确保刀片罩已正确拧紧。



Always there to help you
 始终如一地为您提供帮助

Register your product and get support at
 请登录以下网址并得到相应的帮助
www.philips.com/welcome

Question?
 Contact Philips
 有疑问?
 请联系飞利浦



User manual

用户手册

Fabric Shaver
 飞利浦衣物去毛球器

GC028
 GC029



Specifications are subject to change without notice
 © 2014 Koninklijke Philips N.V.
 All rights reserved.
 保留所有权力。



4239 000 94302

PHILIPS

ENGLISH

Introduction

Congratulations on your purchase and welcome to Philips! To fully benefit from the support that Philips offers, register your product at www.philips.com/welcome.

Important

Read this user manual carefully before you use the appliance and save it for future reference.

Danger

- Use appliance only in dry condition. Never immerse the appliance in water.
- Make sure the adapter does not get wet. (Fig. 1)
- Do not open and remove the blade guard and container during use.
- Do not use the appliance if it shows visible damage or if the blade unit or blade guard is broken.
- Do not let pointed objects come into contact with the blades during use.
- Do not switch on and use the appliance when charging or when performing cleaning and maintenance.
- Keep your fingers and hand away from the blades during cleaning and maintenance.

Warning

- The adapter contains a transformer. Do not cut off the adapter to replace it with another plug, as this causes a hazardous situation.
- The shaver cannot be used directly from the mains.
- This appliance is not intended for use by persons (including children) with reduced physical, sensory or mental capabilities, or lack of experience and knowledge, unless they have been given supervision or instruction concerning use of the appliance by a person responsible for their safety.
- Children should be supervised to ensure that they do not play with the appliance.
- Cleaning and user maintenance shall not be made by Children.
- Keep the appliance out of the reach of children.

Caution

- Use, charge and store the appliance at a temperature between 10°C and 35°C.
- Place the appliance on a horizontal, even and stable surface.
- Switch off the appliance when it is charging.
- Unplug the adapter when the appliance is fully charged.
- The appliance is intended for garments only.

- Only use the adapter supplied.
- Do not use the shaver or adapter if it is damaged, as this may cause injury.
- Clean the appliance with a damp cloth and non-abrasive liquid cleaning agent.

Electromagnetic fields (EMF)

This Philips appliance complies with all applicable standards and regulations regarding exposure to electromagnetic fields.

Using the appliance

- Make sure you smooth out the garment on a flat surface. Do not press the appliance onto the garment too hard. Do not use the appliance on embroideries, zips, buttons and loose threads.

Cleaning and maintenance

For extra safety, the blades stop rotating automatically when you remove the blade guard and container.

Environment

- Do not throw away the appliance with the normal household waste at the end of their life, but hand them in at an official collection point for recycling. By doing this, you help to preserve the environment (Fig. 17)
- The built-in rechargeable battery contains substances that may pollute the environment. Always remove the battery before you discard or hand in the shaver at an official collection point. Dispose of the battery at an official collection point for batteries. If you have trouble removing the battery, you can also take the appliance to a Philips service centre. The staff of this centre will remove the battery for you and will dispose of it in an environmentally safe way (Fig. 18)

Removing the rechargeable battery

Undo the screws, open the casing, take out the printed-circuit board and cut the metal tabs to detach the battery. The appliance must be disconnected from the supply mains when removing the battery.

Guarantee and support

If you need information or support, please visit www.philips.com/support or read the separate worldwide guarantee leaflet.

Note: *The shaving heads (cutters and shaving guards) are not covered by the terms of the international guarantee because they are subject to wear.*

Troubleshooting

Problem	Possible cause	Solution
The appliance does not remove pills.	Pills have been accumulated inside the appliance.	Clean the appliance. (fig 11-15)

Problem	Possible cause	Solution
The cutter is not turning.	The pill container is not pushed properly into the product. The cutter cap is not tightened properly.	Check and ensure the pill container is pushed properly into the product. Check and ensure the cutter cap is tightened properly.

简体中文

简介

恭喜您购买了您的产品，欢迎您来到 Philips 大家庭！为了您能充分享受飞利浦提供的支持，请在 www.philips.com/welcome 上注册您的产品。

重要信息

使用本产品之前，请仔细阅读本使用说明书，并妥善保管以备日后参考。

危险

- 仅在干燥条件下使用本产品。切勿将本产品浸入水中。
- 确保电源适配器干燥。（图 1）
- 请勿在使用过程中打开并取出刀片护罩和容器。
- 如果产品已经明显损坏或刀片组件或刀片护罩已损坏，请勿再使用。
- 使用过程中切勿让尖锐物体接触刀片。
- 本产品正在充电或执行清洁和保养时，请勿打开和使用。
- 清洁和保养时使手指和手远离刀片。

警告

- 适配器包含变压器。切勿自行更换适配器的插头，否则将导致严重后果。
- 本产品不能连在电源上直接使用。
- 本产品不打算由有肢体、感官或精神能力缺陷或缺少使用经验和知识的人（包括儿童）使用，除非有负责他们安全的人对他们进行与产品使用有关的监督或指导。

- 应照看好儿童，避免他们玩耍本产品。
- 不要让儿童进行清洁和保养。
- 请将产品放置在儿童接触不到的地方。

警告

- 必须在 10 摄氏度至 35 摄氏度之间的温度下使用、存放和为本产品充电。
- 将产品放在一个水平、平滑、稳固的表面上。
- 关机充电。
- 产品充满电后请拔下适配器。
- 本产品只能用于衣物。
- 只能使用随附的适配器。
- 一旦本产品或适配器损坏，请勿再使用产品，否则可能对人体造成伤害。
- 用湿布和非腐蚀性液体清洁剂清洁本产品。

电磁场 (EMF)

本飞利浦产品符合所有有关暴露于电磁场的适用标准和法规。

使用本产品

- 确保在平坦的表面上理顺衣物。请勿将产品过于用力地按在衣物上。请勿在刺绣、拉链、纽扣和松散的线头上使用产品。

清洁和维护

为保障使用安全，卸下刀片护罩和容器时刀片会自动停止旋转。

环保

- 弃置产品时，请不要将其与一般生活垃圾堆放在一起，应将其交给政府指定的回收中心。这样做有利于环保（图 17）。
- 内置充电电池包含可能会污染环境的物质。丢弃产品时，一定要将电池取出，或将本产品送到官方指定的回收站。到官方指定的电池回收站处理电池。如果您在取出电池时遇到问题，也可以将产品送至飞利浦服务中心。服务中心的工作人员将为您取出电池，并以安全环保的方式进行处理（图 18）。