

PHILIPS



Washable hair
clipper

Hairclipper series 9000

Titanium blades

400 length settings

120 mins cordless use/1 h charge



HC9450/20

The perfect haircut, personalised to you with Motorised Combs

The Hair Clipper 7000 offers a precise, personalised haircut. With 28 length settings, a PowerAdapt sensor and Trim-and-Flow Technology, it adjusts power to your hair density for a sharp, even finish.

Easy to use

- Memory Function Remembers Your Preferred Settings
- Up to 120 minutes of cordless use
- Easy charging and storage

Performance

- Extra-sharp blades for an extra-sharp result
- Maximum precision with Philips DualCut system
- Motorised Combs Ensure Consistent Cuts Every Time

Ultimate precision and control

- 400 length settings with digital swipe
- 3 adjustable hair combs to achieve your desired length

Built to last

- Up to 5-Year Global Warranty for Purchase Protection

Easy and convenient use



reddot award 2015
winner

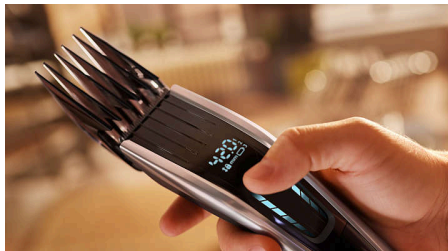
Hairclipper series 9000

Washable hair clipper

HC9450/20

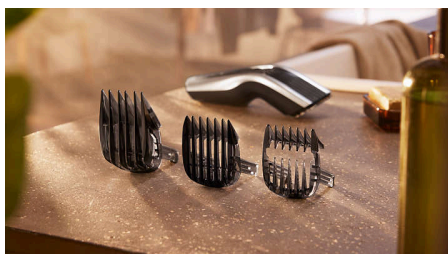
Highlights

400 length settings with digital swipe



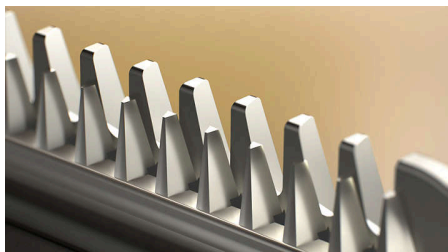
Achieve your perfect haircut with precision. Choose from over 400 lengths in 0.01 mm increments to get the exact length you desire for your ideal look.

3 adjustable hair combs



Achieve precise clipping with our 3 adjustable hair combs. Choose from over 400 hair lengths ranging from 1 mm to 42 mm, or use the clipper without a comb for a close 0.5 mm trim.

Titanium blades



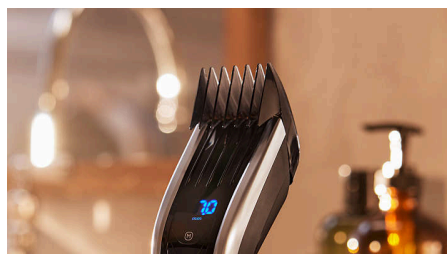
Get a perfect yet protective trim with the self-sharpening titanium-coated steel blades, created for long-lasting performance, time after time.

Motorised Combs



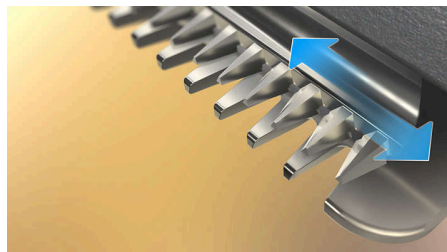
Lock in your desired hair length with 0.1 mm accuracy and effortlessly maintain it with Philips' motorised length setting system, designed for precision.

Memory Function



Your perfect haircut, every time. The smart hair clipper's memory function remembers your 3 preferred length settings, saving you time and hassle while achieving your ideal look.

DualCut Technology



Enjoy your desired look with precision. Philips DualCut technology features a double blade system designed to maintain day-one sharpness, consistently delivering equally sharp results, every time.

Powerful cordless use



Don't get tangled up in your cordless hair clippers – a 1 hour charge provides up to 120 minutes of powerful clipping time. Or keep it plugged in for uninterrupted trimming.

Up to 2-year guarantee



A grooming product built to last: the warranty offers coverage for up to 5 years, including a 2-year standard global warranty, with an additional 3 years available upon registering the device within 90 days of purchase.

Hairclipper series 9000

Washable hair clipper

HC9450/20

Highlights

Hair clipper is built to last with no oil required



All of our Hair clipping products* are built to last. They come with a standard global 2 year warranty, including the option to extend up to 5 years,** and they never need to be oiled.

Charging stand and storage pouch



The Philips Hairclipper 9000 includes a charging stand and travel pouch for added convenience and ease.

Hairclipper series 9000

Washable hair clipper

HC9450/20

Specifications

Power system

Motor: Auto Turbo

Battery type: Li-Ion

Operation: Corded and cordless

Running time: 120 minutes

Charging time: 1 hour

Accessories

Attachments: 3 hair combs

Stand: Charging stand

Pouch

Power

Off mode (no attachments): < 0.1 W

Service

Up to 5-year guarantee

Cutting system

Cutting element: Titanium blades

Cutter width: 41 mm

Number of length settings: 400

Range of length settings: From 0.5 to 42 mm

Precision (size of steps): By 0.1 mm

Length selection: Digital Swipe, Motorised Combs

Ease of use

Maintenance-free: No oil needed

Cleaning: Removable cutter

Memory function

