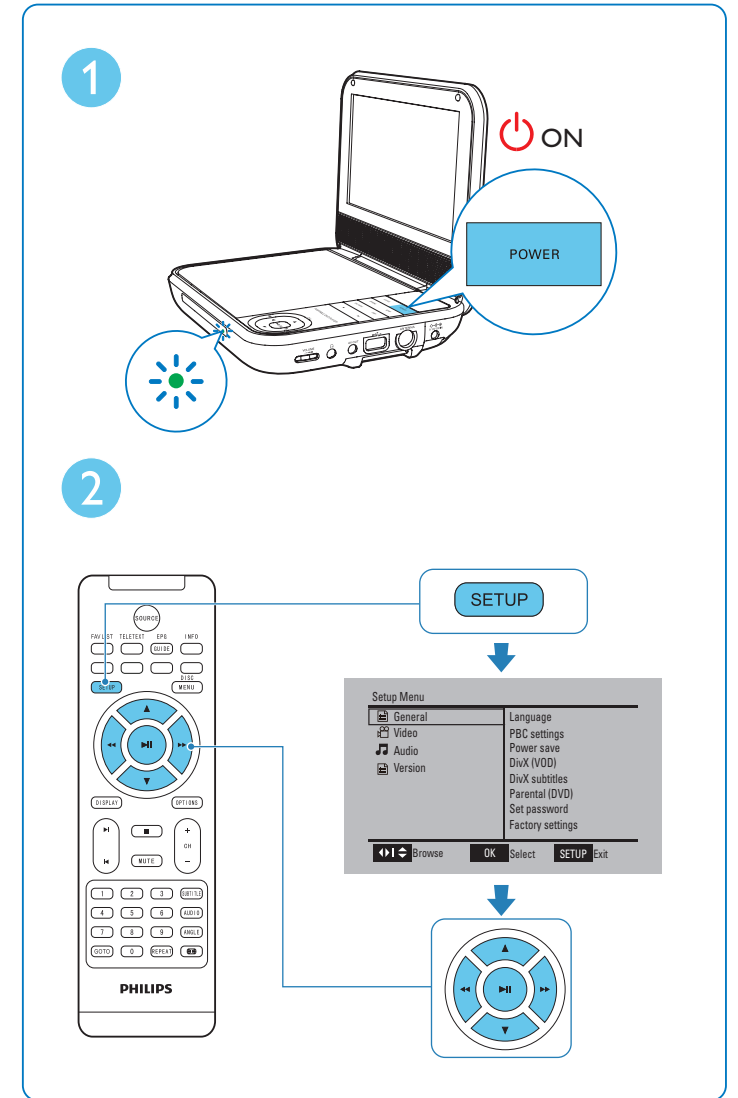
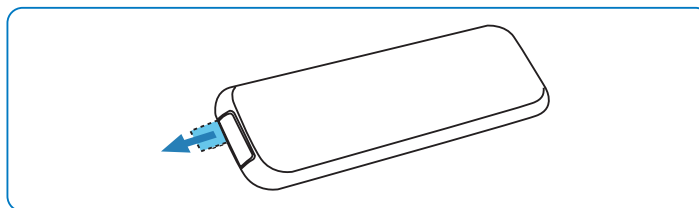
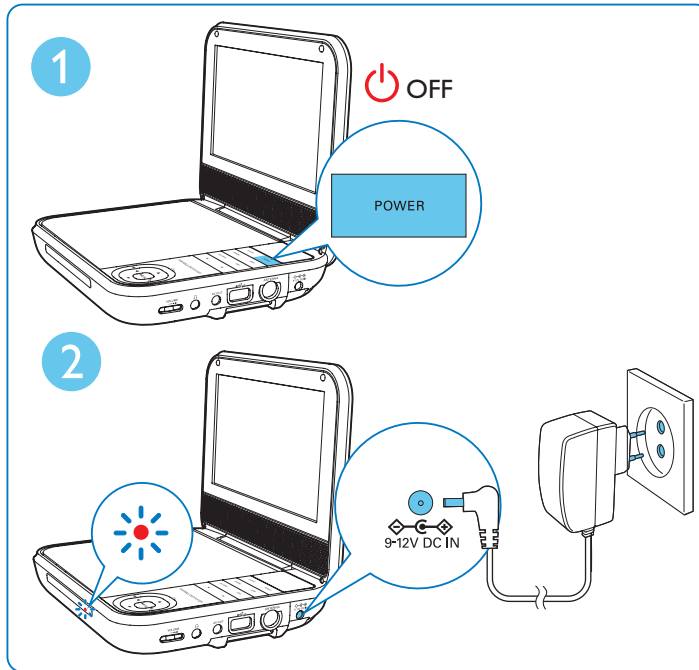
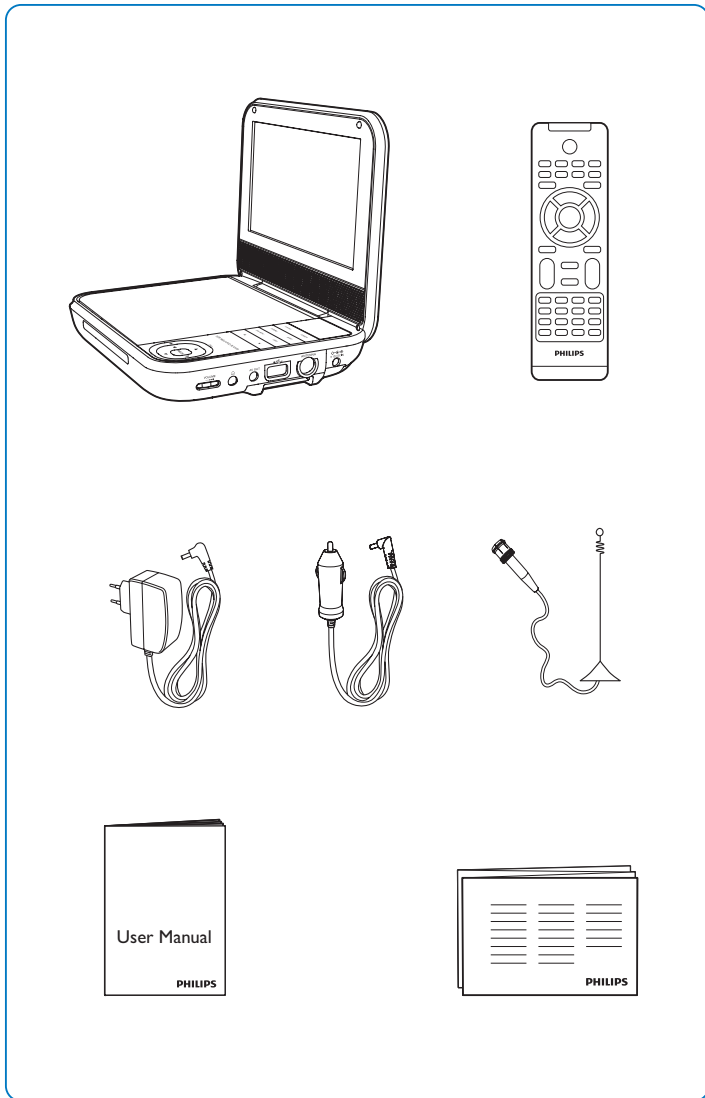
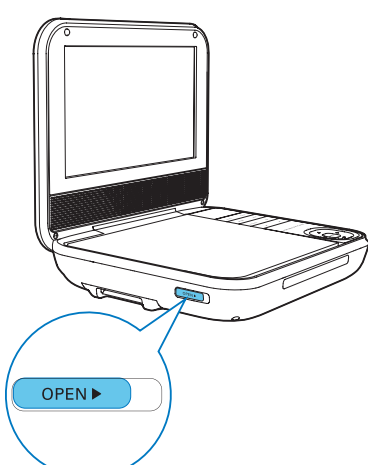


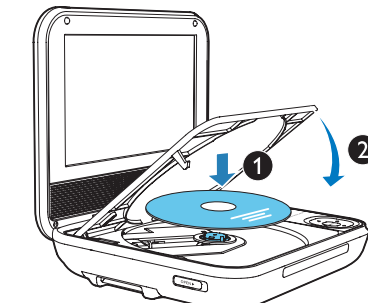
# Quick Start Guide

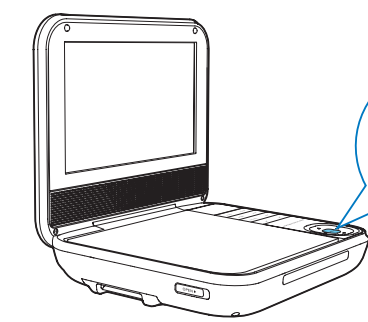


# 4



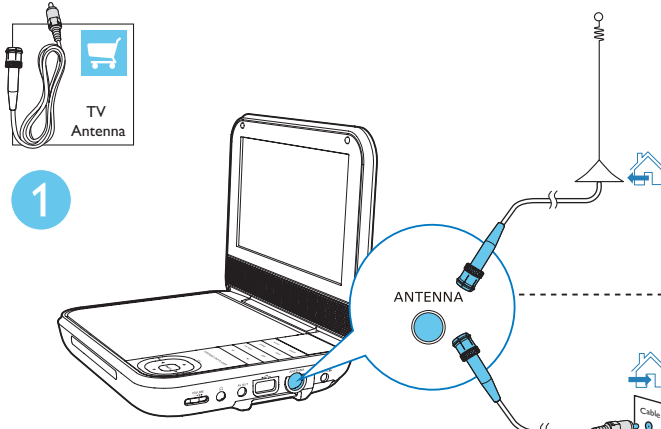
**1**  OPEN ▶

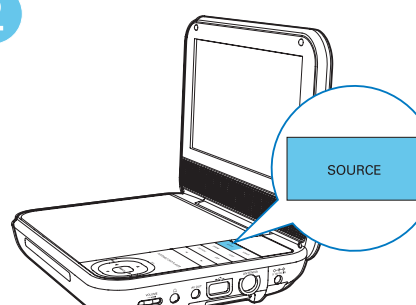
**2**  1 2

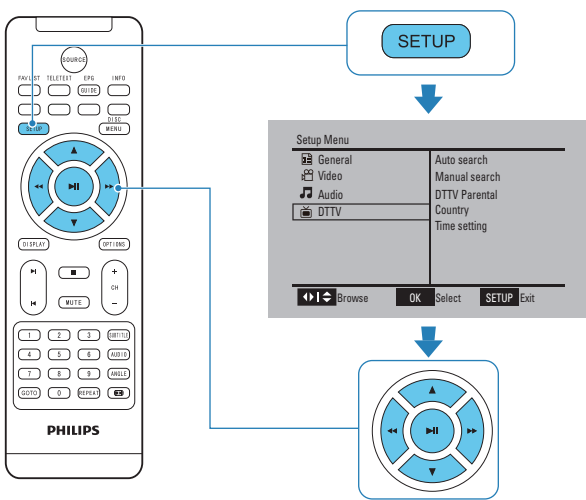
**3**  ▶II/OK

# 5



**1**  TV Antenna ANTENNA

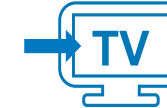
**2**  SOURCE

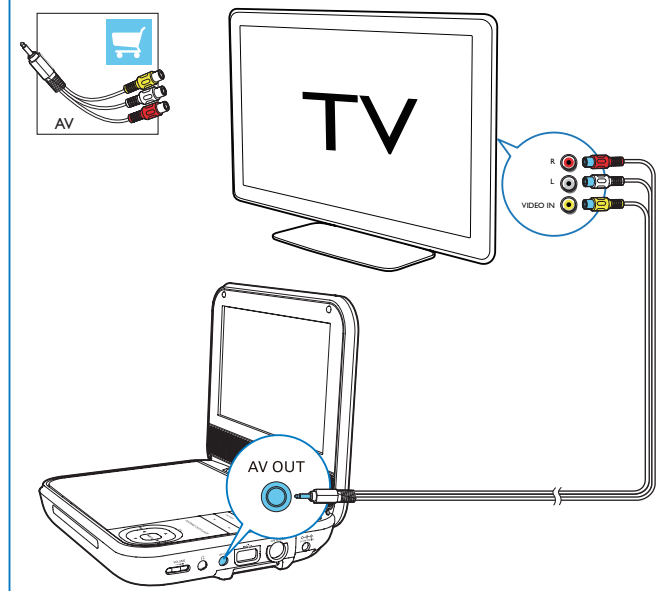
**3**  SETUP

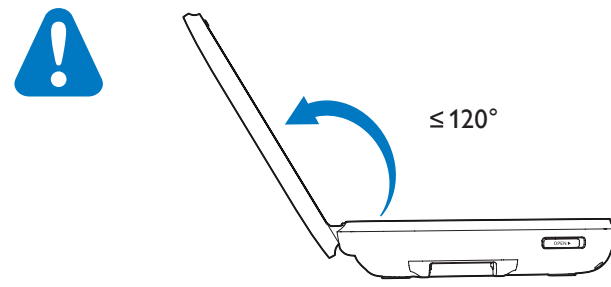
Setup Menu	
General	Auto search
Video	Manual search
Audio	DTTV Parental
DTTV	Country
	Time setting

PHILIPS

# 6



**AV**  AV OUT

**! ≤ 120°** 



[www.philips.com/support](http://www.philips.com/support)



Specifications are subject to change without notice  
© 2015 Koninklijke Philips N.V. All rights reserved.  
Trademarks are the property of Koninklijke Philips N.V. or their respective owners.

PD7025\_12\_QSG\_V1.0

