



#### Earbud headphones

- 14.8mm drivers/open-back
- Earbud

SHE3010BK/27

## Extra bass

### Soft body for comfy fit

Philips SHE3010 headphones with soft body earbuds offer a soft, comfortable fit. Available in vibrant, eye-catching colors to match your style.

#### Benefits

##### Enjoy quality sound

- Neodymium magnets enhance bass performance and sensitivity
- 14.8mm speaker drivers for high quality sound

##### Ultimate wearing comfort

- Soft body ensures a comfortable fit

- Rubberized front caps for wearing comfort

##### Design for convenience

- Flexi-Grip design for durability

#### Features

##### Flexi-grip

A soft, flexible part protects the cable connection from damage that otherwise would occur due to repeated bending.

##### Neodymium magnets

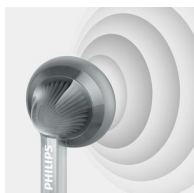
Neodymium is the best material for producing a strong magnetic field for greater sensitivity in a voice coil, better bass response and higher overall sound quality.

# PHILIPS

### Soft body

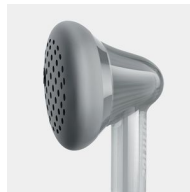
The transparent, rubberized headphone body molds itself to the shape of the ear for comfortable listening.

### 14.8mm speakers



Large 14.8mm speaker drivers squeezed into earbud headphones deliver high quality sound.

### Rubberized front cap



A rubberized front cap provide a totally soft body for wearing comfort.

## Specifications

Please note that this is a pre-sales leaflet. The contents of this leaflet reflect the best of our knowledge per date and country mentioned above. The contents of this leaflet are subject to change without notice. Philips does not accept any liability as to the contents of this leaflet.

### Design

Color Black

Type of shelf placement Both  
Width 5 cm

### Sound

Acoustic system open  
Magnet type Neodymium  
Voice coil copper  
Diaphragm PET  
Impedance 16 ohm  
Maximum power 25 mW  
input  
Sensitivity 107 dB  
Speaker diameter 14.8 mm  
Type Dynamic  
Frequency response 9 - 22 000 Hz

### Inner Carton

Gross weight 0.117 kg  
GTIN 2 06 09585 24336 5  
Height 6 cm  
Length 17.9 cm  
Nett weight 0.02964 kg  
Number of consumer packagings 3  
Tare weight 0.08736 kg  
Width 8 cm

### Connectivity

Cable Connection two-parallel, symmetric  
Cable length 1 m  
Connector 3.5 mm  
Finishing of connector nickel plated  
Type of cable copper

### Outer Carton

Gross weight 1.162 kg  
GTIN 1 06 09585 24336 8  
Height 16.3 cm  
Length 34.5 cm  
Nett weight 0.23712 kg  
Number of consumer packagings 24  
Tare weight 0.92488 kg  
Width 19.7 cm

### Packaging dimensions

UPC 6 09585 24336 1  
Depth 2.4 cm  
Gross weight 0.02915 kg  
Height 17.275 cm  
Nett weight 0.00988 kg  
Number of products included 1  
Packaging type Display  
Tare weight 0.01927 kg

### Product dimensions

Depth 1.25 cm  
Height 2.1 cm  
Weight 0.00988 kg  
Width 1.6 cm



data subject to change  
2017, July 29

Version: 4.1.4  
UPC: 609585243361

© 2017 Koninklijke Philips N.V.  
All rights reserved.

Specifications are subject to change without notice. Trademarks are the property of Koninklijke Philips N.V. or their respective owners.

[www.philips.com](http://www.philips.com)