

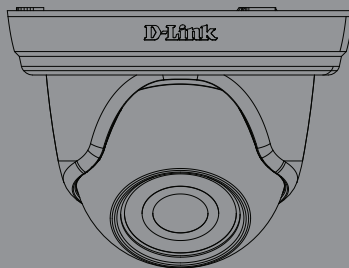


## Quick Installation Guide

### Vigilance Full HD Outdoor PoE Mini Dome Camera

This document will guide you through the basic installation process for your new D-Link Network Camera.

**DCS-4802E**



Quick Installation Guide

Installationsanleitung

Guide d'installation

Guía de instalación

Guida di Installazione

Краткое руководство по установке

Guia de Instalação Rápida

快速安裝指南

Petunjuk Pemasangan Cepat

Documentation also available on  
CD and via the D-Link Website



---

# Quick Installation Guide

This installation guide provides basic instructions for installing the DCS-4802E on your network. For additional information about how to use the camera, please see the User Manual, which is available on the CD included in this package, or you can download it from the D-Link support website.

## Package Contents

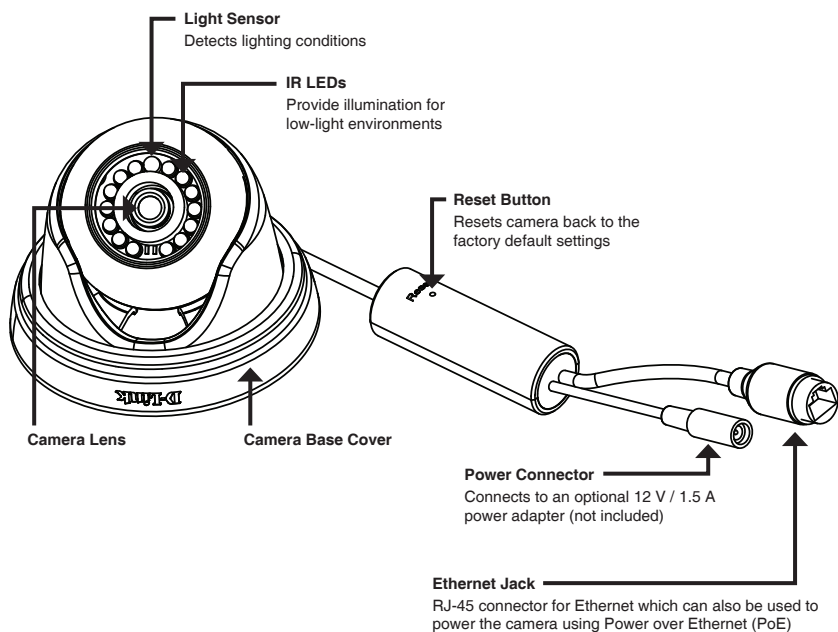
- DCS-4802E Vigilance Full HD Outdoor PoE Mini Dome Camera
- Cable Waterproofing Connector
- Rubber Power Connector Plug
- Mounting Kit
- Manual and Software on CD-ROM
- Quick Installation Guide

If any of the above items are missing, please contact your reseller.

### **Safety Notice:**

Installation and servicing should be done by certified technicians so as to conform to all local codes and prevent voiding your warranty.

# Hardware Overview

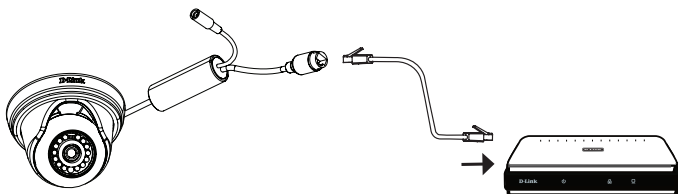


## Connecting the Camera

You can power the DCS-4802E two different ways: Power over Ethernet (PoE) or with a power adapter.

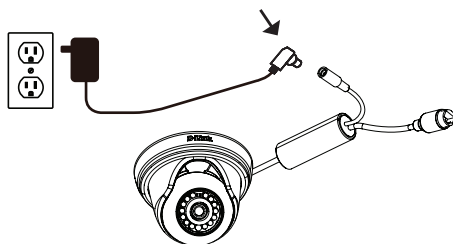
### Powering the camera using PoE (Class 2):

Connect an Ethernet cable to the Ethernet jack on the camera. Connect the other end of the cable to your PoE switch or PoE injector.

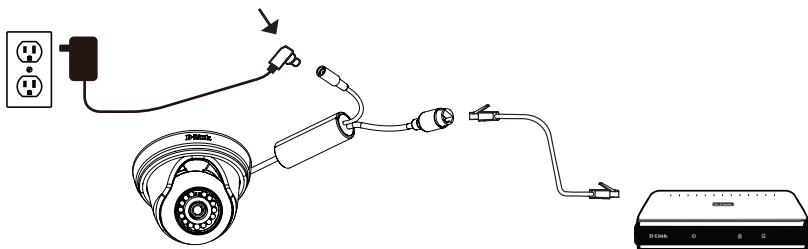


### Powering the camera with a power adapter (not included):

Connect a 12 V, 1.5 A power adapter to the power connector.



Connect an Ethernet cable to the Ethernet jack on the camera. Connect the other end of the cable to your network.



# Configuring the Camera

Insert the DCS-4802E CD into your computer's CD-ROM drive to begin the installation. If the Autorun function on your computer is disabled, or if the D-Link Launcher fails to start automatically, click the Start button and type **D:\autorun.exe** (where D: represents the drive letter of your CD-ROM drive) and press Enter.

Click **Setup Wizard** and follow the instructions to install the Setup Wizard.

Click on the **D-Link Setup Wizard SE** icon that was created in your Windows Start menu (**Start > D-Link > Setup Wizard SE**).

The Setup Wizard will appear and display the MAC address and IP address of your camera(s). If you have a DHCP server on your network, a valid IP Address will be displayed. If your network does not use a DHCP server, the network camera's default static IP **192.168.0.20** will be displayed.

Select your camera, then click the **Wizard** button to continue.

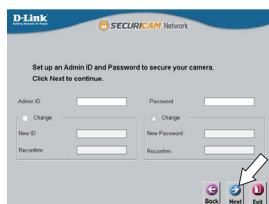
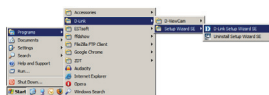
Enter the Admin ID and password. When logging in for the first time, the default Admin ID is **admin** with the password left blank.

Click the checkboxes if you wish to change the admin ID and password for the camera, and enter the new ID and password you wish to use.

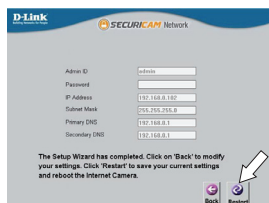
Click **Next** to continue.

Select **DHCP** if your camera obtains an IP address automatically from a DHCP server such as a router. Select **Static IP** if you want to manually enter the IP settings for the camera.

Click **Next** to continue.

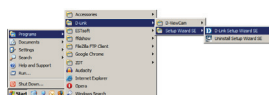


Take a moment to confirm your settings and click **Restart**.



## Viewing Your Camera via Web Browser

Click on the **D-Link Setup Wizard SE** icon that was created in your Windows Start menu (**Start > D-Link > Setup Wizard SE**).

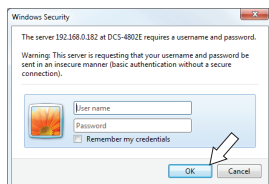


Select the camera and click **Link** to access the web configuration.

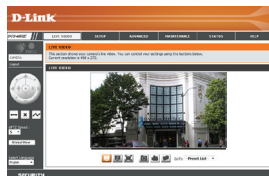
The Setup Wizard will automatically open your web browser to the IP address of the camera.



Enter your username (default is **admin**) and your password (default is blank). Click **OK** to continue.



This section displays your camera's live video. You can select your video profile and view or operate the camera. For additional information about web configuration, please refer to the user manual included on the CD-ROM or the D-Link website.

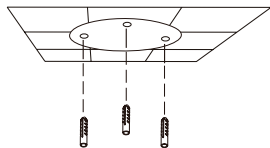


## Mounting Instructions

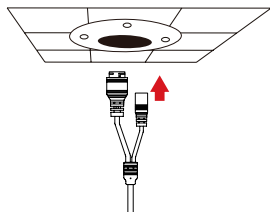
It is highly recommended that you configure and test your camera before mounting it.

Place the mounting sticker where you want to position the camera.

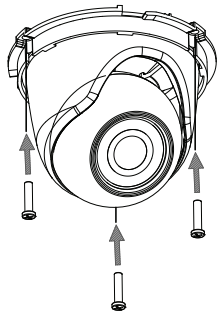
Use a 6 mm drill bit to make the required holes approximately 25 mm deep, then insert the wall anchors into the holes.



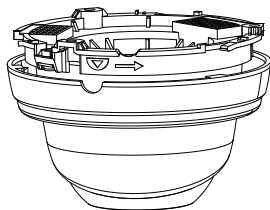
**If you are running the camera cables through the wall or ceiling,** drill a hole in the center and pull the cables through the hole. If not, then guide the camera cables through the cable channel on the base after mounting to the wall or ceiling.



Use the screws provided to mount the camera to the wall or ceiling.



Attach the camera base cover by lining up the cable channel with the mark on the camera base, then turn the camera base cover clockwise until it clicks.

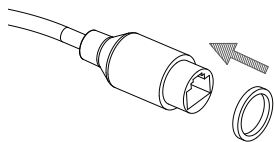




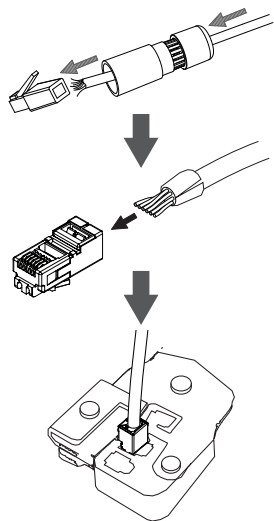
## Waterproofing Your Installation

To waterproof your camera installation, follow the instructions below. Round Ethernet cable, a crimping tool, and RJ-45 plugs are required for this procedure.

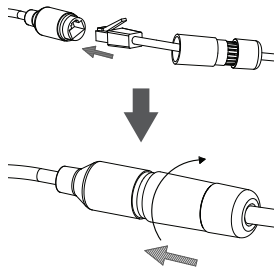
Place the washer around the base of the Ethernet connector as shown.



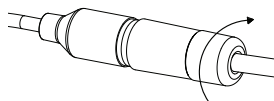
Thread bare Ethernet cable through the waterproof connector as shown, then crimp an RJ-45 plug onto the cable.



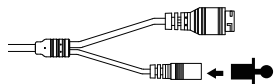
Connect the RJ-45 plug into the Ethernet connector, then screw the waterproof connector to the Ethernet connector by turning it about a half-turn clockwise.



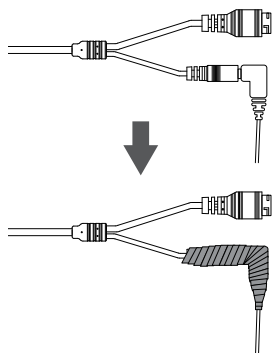
Turn the back part of the waterproof connector clockwise until there is a tight seal around the Ethernet cable.



If you are using PoE to power your camera, attach the included rubber power connector plug to the power connector.



If you are using a power adapter (not included) to power your camera, wind waterproof tape around the connection in an overlapping manner to cover it.



## Additional Information

Additional help and product information is available online at <http://www.dlink.com>.

## Warranty Information

Please visit <http://warranty.dlink.com/> for warranty information for your region.

---

# Notes

**D-Link<sup>®</sup>**



Ver. 1.00(WW)  
2015/07/14