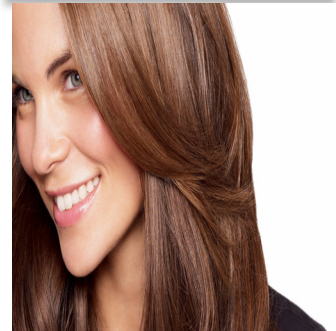


Philips
Straightener

ActiveCare



HP8363/03



Maximum shine with maximum protection

Straightener with ceramic plates

The Philips ActiveCare Jojoba straightener protects the hair from overheating, due to its high performance heater. At the same time it gives maximum shine to the hair with natural Jojoba oil infused ceramic plates.

Beautifully styled hair

- Great results in less time with gentle sonic vibrations
- Maximum shine with Jojoba oil infused ceramic plates

Less hair damage

- Healthy hair without hotspots with Even Heat Distribution
- More care with ion conditioning for shiny, frizz-free hair
- Caring and efficient straightening with constant temperature

Ease of use

- Closing lock to close the handle for easy and safe storage
- Automatic shut-off after 30 min
- No more accidental change of settings with key-lock function
- Included: Heat resistant pouch
- Instant heat-up within 15 seconds

PHILIPS

Highlights

Constant temperature



This straightener keeps a more constant temperature. Thanks to its high-performance heater it allows you to straighten your hair at a more caring temperature while getting the exact style you want!

Even Heat Distribution



Advanced Philips EHD+ technology means that your styler will always distribute the heat very evenly - even at high temperatures, and prevents damaging hot spots. This gives added protection and thus helps to keep your hair healthy and shiny.

Gentle sonic vibrations



Gentle and pleasant vibrations evenly distribute the hair over the plates so that each hair benefits from the care effects

Instant heat-up



Instant heat-up within 15 seconds

Ionic Care



Give your hair an instant care with ionic conditioning. Charged negative ions eliminate static, condition the hair and smooth down the hair cuticles to intensify the hair's shine and glossiness. The result is hair that is beautifully shiny, smooth and frizz-free.

Jojoba oil ceramic plates



For maximum shine, the ceramic plates have been infused with natural and heat-resistant Jojoba oil. The plates glide effortlessly through your hair, giving you perfect shiny hair.

Specifications

Technical specifications

- Voltage: 110-240 V
- Heating time: Instant heat-up: 15 sec
- Cord length: 2 m
- Color/finishing: Grey and Peach
- Heater type: High-performance
- Maximum temperature: 199 °C

Features

- Ready for use indicator
- Swivel cord
- Ceramic coating
- Coating: Jojoba-oil infused ceramic

Hair type

- End result: Straight
- Hair length: Long, Medium, Short
- Hair thickness: Medium, Thick, Thin

Service

- 2-year worldwide guarantee



Issue date 2015-06-22

Version: 2.0.1

EAN: 08 71010 36598 60

© 2015 Koninklijke Philips N.V.
All Rights reserved.

Specifications are subject to change without notice.
Trademarks are the property of Koninklijke Philips N.V.
or their respective owners.

www.philips.com