

# DAILY REFERENCE GUIDE



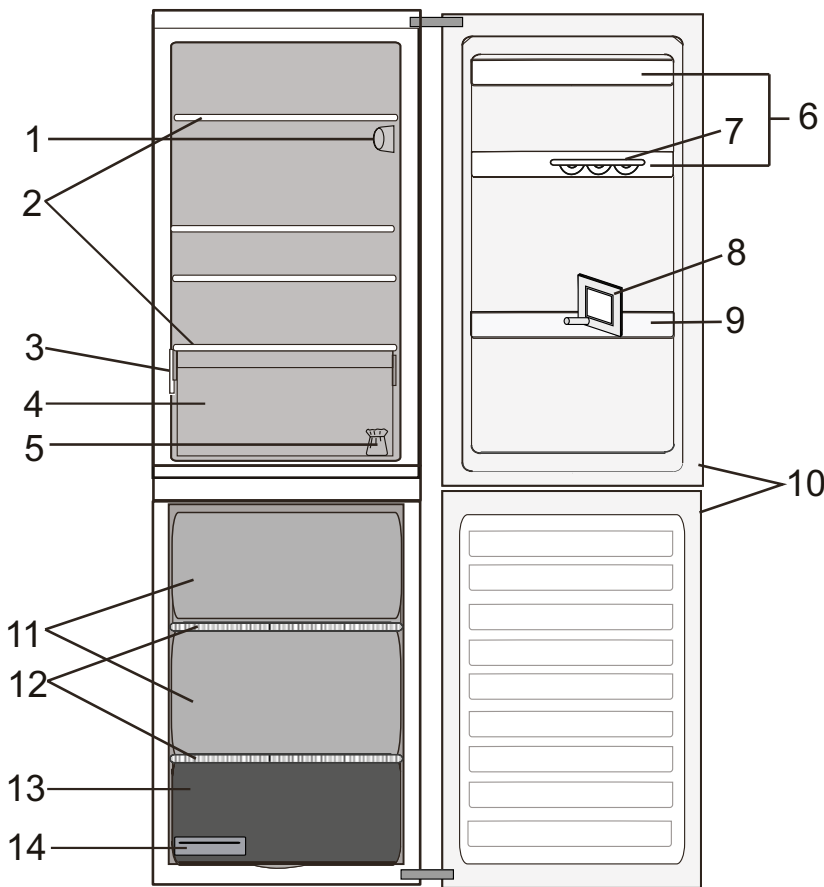
## THANK YOU FOR BUYING A WHIRLPOOL PRODUCT.

In order to receive a more complete assistance, please register your appliance on [www.whirlpool.eu/register](http://www.whirlpool.eu/register)

Before using the appliance carefully read *Health and Safety* and *Use and Care* guides.

## PRODUCT DESCRIPTION

### APPLIANCE



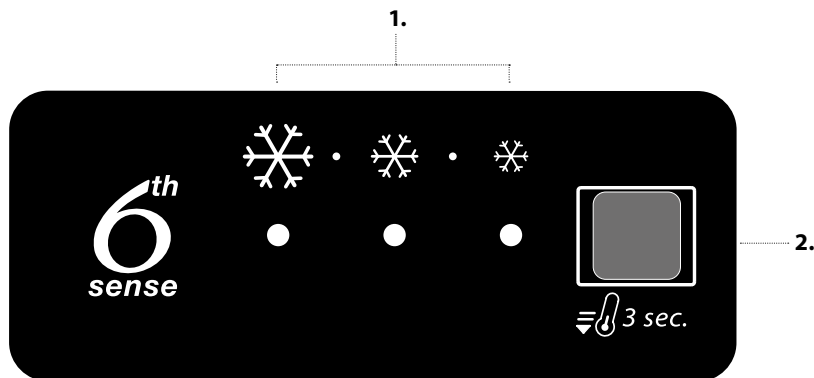
### Refrigerator compartment

- 1. Electronic control panel / light unit
- 2. Shelves
- 3. Rating plate with commercial name
- 4. Fruits and vegetables crisper
- 5. Door reversibility kit
- 6. Door trays
- 7. Egg tray
- 8. Bottle separator
- 9. Bottle balcony
- 10. Door seal

### Freezer compartment

- 10. Door seals
- 11. Freezer drawers
- 12. Shelves
- 13. Bottom drawer: coolest zone best for freezing fresh food
- 14. Ice tray

### CONTROL PANEL



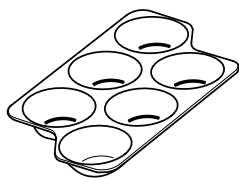
- 1. Indicator Leds (to display the current temperature setpoint or the Fast Cooling function)
- 2. Fast Cooling Button / Temperature Button

---

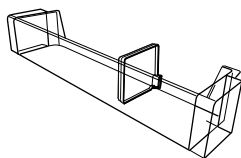
## ACCESSORIES

---

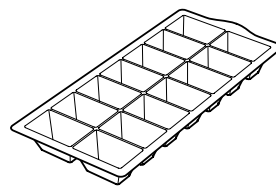
### EGG TRAY



### BOTTLE SEPARATOR



### ICE TRAY



---

## FIRST TIME USE

### HOW TO START THE APPLIANCE

After plugging the appliance to the mains, it starts the operation automatically.

After starting the appliance, wait at least 4-6 hours before placing food into the fridge and into the freezer compartment.

When the appliance is connected to the power supply, the display lights up and all the icons appear on the display for approximately 1 second. The default (factory) values of the fridge compartment settings light-up.

# DAILY USE

See Use and Care Guide for more details on functions /  
see last page for information on how to obtain the Use and Care Guide

## FUNCTIONS

### TEMPERATURE SETTING

**Press the Temperature button** on the control panel to adjust the temperature from the warmest through the lower to the coldest level.  
Pressing the Temperature button, the temperature setting will change cyclically.  
At first plug-in of appliance temperature setpoint is present at medium position (factory setting).  
Following table shows temperature setpoints:

	<b>HIGH TEMP.</b>
	<b>MED-HIGH TEMP.</b>
	<b>MEDIUM TEMP.</b>
	<b>MED-LOW TEMP.</b>
	<b>LOW TEMP.</b>
	<b>FAST COOLING</b>

. . .

☒ Led on ☐ Led off

*Note:* Displayed set points correspond to the average temperature throughout the whole refrigerator.

### 6TH SENSE

This function automatically works to ensure the optimal conditions to preserve the stored food.  
The "6th Sense" function is automatically activated when:

- a large amount of food is loaded into the refrigerator
- the refrigerator door is left open for a long time
- a prolonged power failure takes place, causing the internal temperature of the appliance to increase to values that cannot guarantee safe storage of food.

### FAST COOLING

The use of the Fast Cooling function is recommended to increase the cooling capacity of the refrigerator compartment when placing a very high quantity of food within it.

To activate the Fast Cooling function, **press and hold for 3 seconds the Temperature button** on the control panel till all the 3 LEDs will turn on.

The function is automatically deactivated after 24 hours



and return to previous selected set point.

The function can be manually deactivated by pressing and holding for 3 seconds the Temperature button on the control panel.

### REFRIGERATOR LIGHT

The light system inside the refrigerator compartment uses LEDs light, allowing a better lightning as well as a very low energy consumption.

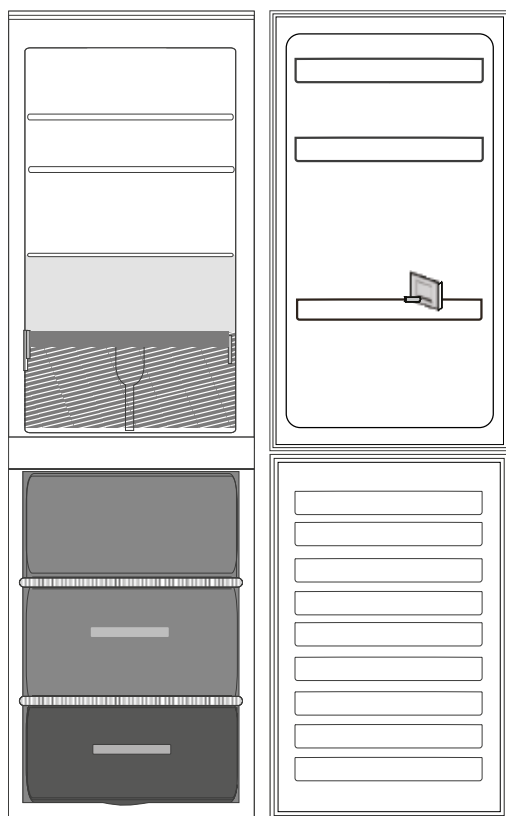
If the LED light system does not work, please contact the Service to replace it.

*Important:* The refrigerator compartment light switches on when the refrigerator door is opened. If the door is kept open for more then 8 minutes the light will be automatically switched off.


## ALARM TABLE


ALARM TYPE	SIGNAL	CAUSE	CURE
Door open alarm	Refrigerator Light blinks	The door has remained open for more than 5 minutes.	Close the door
Door open alarm	Refrigerator Light OFF	The door has remained open for more than 8 minutes.	Close the door
Malfunction	Any temperature indicators blinks	Product malfunction.	Contact the After-sales Service

# HOW TO STORE FOOD AND BEVERAGE



## Legend

 **TEMPERATE ZONE** Suggested for the storage of tropical fruit, cans, drinks, eggs, sauces, pickles, butter, jam

 **COOL ZONE** Suggested for storage of cheese, milk, daily food, delicatessen, yogurt, cold cuts, desserts

 **FRUIT & VEGETABLE DRAWER**

 **NORMAL FREEZER DRAWERS**

 **FREEZING ZONE DRAWER (MAX COOL ZONE)** Suggested to freeze fresh/cooked food.

*Note: The Grey tone of the legend doesn't match with the color of drawers*

## FRIDGE COMPARTMENT

Use recyclable plastic, metal, aluminum and glass containers and cling film to wrap foods.

Always use closed containers for liquids and for food that may give off or be tainted by odor or flavor transfer or cover them.

If you have a little quantity of food to store in the refrigerator, we recommend to use the shelves above the crisper for fruits and vegetables since this is the coolest area of the compartment.

Foods which give off a large amount ethylene gas and those that are sensitive to this gas, such as fruit, vegetables and salad, should always be separated or wrapped so as not to reduce the storage life; for example do not store tomatoes together with kiwi fruits or cabbage.

To avoid bottles falling over, you can use the bottle holder (available on selected models).

Do not store food too close together to enable sufficient air circulation.

## FREEZER COMPARTMENT

The freezer is the ideal storage location for store frozen food, make ice cubes and freeze fresh food in the freezer compartment. The maximum number of kilograms of fresh food that can be frozen within a 24-hour period is indicated on the rating plate (... kg/24h).

If you have a little quantity of food to store in the freezer, we recommend to use the coldest areas of your freezer compartment, corresponding to the middle area.

## MAINTENANCE AND CLEANING AND PROBLEM SOLVING

For maintenance and cleaning and for Problem Solving see the **Use and Care Guide**.

The **Use and Care Guide** can be obtained by:  
> After-Sales Service; phone number see in warranty booklet.  
> download from Whirlpool Website  
<http://docs.whirlpool.eu>



## CONTACTING AFTER-SALES SERVICE

Provide both numbers shown on the service sticker when contacting the After-Sales Service team. <http://www.whirlpool.eu>

The technical information are situated in the rating plate on the internal side of the appliance.



Whirlpool® Registered trademark/TM Trademark of Whirlpool group of companies -  
© Copyright Whirlpool Europe s.r.l. 2014. All rights reserved - <http://www.whirlpool.eu>

