



Philips StyleCare
Auto-rotating airstyler

Keratin Ceramic coating

Ionic
800W
3 attachments



HP8668/00



Soft curls, waves and volume with auto air curling

The new to the world auto-rotating airstyler comes with a unique curling attachment for soft curls and waves, with a round brush for a voluminous bouncy look and with a nozzle for gentle drying. A caring drying & styling experience.

Beautifully styled hair

- Automatic air curl attachment creates waves and soft curls
- Narrow concentrator for focused airflow
- 50mm round brush adds volume and movement
- 800W styling power for beautiful results
- Cool shot to set your style
- 3 different attachments for multiple styles and volume

Care for your hair

- Prevents static for smooth, frizz free and shiny hair
- Protective ceramic coating with keratin infusion

Easy to use

- The airstyler automatically rotates in both directions
- The airstyler is compact and fits better in your hand
- Three flexible heat and speed settings for more control
- Swivel cord to prevent tangled wires

PHILIPS

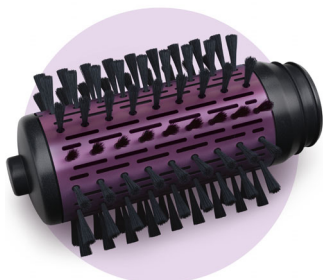
Highlights

Air curl attachment



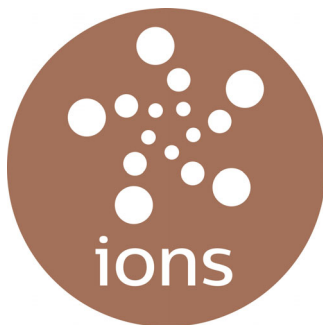
After you have dried your hair 80%, place a strand of hair on the opening of the air curl attachment. At a touch of a button, your strand of hair disappears into the curling chamber where it is dried and styled. A beautiful brushed out curl is released, for a gorgeous, natural look.

50mm round brush



The 50mm thermo brush is the perfect way to add volume, body and shine to your hair. Use on nearly-dry hair to create a beautiful salon blow dry at home.

Ionic care



Charged negative ions eliminate static, condition the hair and smooth down the hair cuticles to intensify the hair's shine and

glossiness. The result is hair that is smooth, shiny and frizz-free.

Keratin ceramic



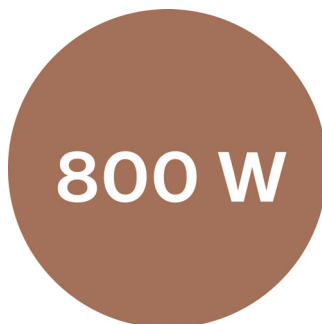
Protective ceramic coating with keratin infusion for better care of your hair.

Narrow concentrator



The concentrator of the airstyler works by focusing the airflow through the opening, onto specific areas, enabling a gentle drying experience. Recommended for pre-drying the hair and preparing it for styling.

800W



This 800W airstyler creates the optimum level of airflow and gentle drying power for beautiful results every day.

Cool air setting



A cool air setting allows you to fix your style or to dry hair at relatively low temperature to minimize damage.

Two way rotation



The airstyler can be rotated in both directions, making it easy to handle and create a variety of styles.

Compact design

With an ergonomic design and a smaller handle size, the airstyler allows for an easier and more comfortable user experience.

Versatile looks

3 different attachments for multiple styles and volume

Three heat and speed settings

Three flexible heat and speed settings for more control

Specifications

Attachments

- 50mm round brush: For volume & smooth shiny hair
- Nozzle: For a focused airflow
- Unique AirCurl attachment: For waves and soft curls

Caring technologies

- Keratin Ceramic
- Ionic technology

Ease of use

- Storage hook
- Swivel cord

Power

- Voltage: 220-240V
- Wattage: 800W



Issue date 2018-03-28

Version: 2.2.1

© 2018 Koninklijke Philips N.V.
All Rights reserved.

Specifications are subject to change without notice.
Trademarks are the property of Koninklijke Philips N.V.
or their respective owners.

www.philips.com