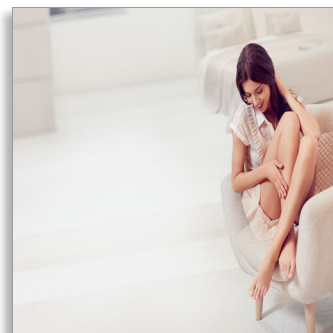




Philips Lumea Prestige IPL - Hair removal device

For use on body, face, bikini

15 minutes to treat lower legs
>250,000 lamp flashes
Cordless design



SC2009/60



Feel continuously hair free*

Philips Lumea Prestige is the most effective cordless IPL solution and works wonders to prevent the reappearance of hair on face and body. Gentle pulses of light, applied regularly, keep skin silky-smooth every day.

Long lasting hair removal with IPL technology

- Enjoy smooth skin every day
- Effortlessly effective
- Adapted for safe and effective use in your own home
- Suitable for a wide variety of hair and skin types

Gentle and effective on body, face and bikini

- Safe and effective even on sensitive areas
- Large treatment window for fast application
- Facial attachment for safe facial treatment
- Attachment for specialised treatment of bikini area hair
- Gentle treatment

Maximum freedom, minimum hassle

- Cordless convenience
- No replacement parts, no hidden costs
- Five adjustable light energy settings

IPL - Hair removal device

For use on body, face, bikini 15 minutes to treat lower legs, >250,000 lamp flashes, Cordless design

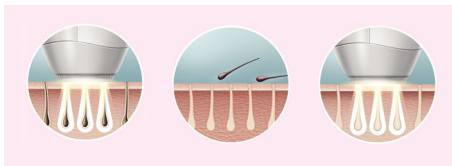
Highlights

IPL technology



Philips Lumea uses an innovative light-based technology called IPL (Intense Pulsed Light), derived from the technology used in professional beauty salons. Philips has adapted this technology for safe and effective use in the comfort of your own home. Philips worked closely with leading dermatologists to develop our breakthrough hair removal system. For more than 10 years we carried out extensive consumer research with more than 2000 volunteers.

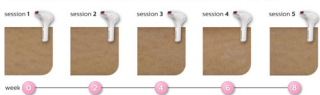
Enjoy smooth skin every day



Philips Lumea applies gentle pulses of light to the hair root. As a consequence, the amount of hair your body grows gradually decreases. Repeating the treatment leaves your skin beautifully hair free and touchably smooth.

Effortlessly effective

Clinical results after treatment: **example 1** (leg)



Clinical results after treatment: **example 2** (bikini line)



Our clinical studies have shown significant hair reduction in as little as four fortnightly

treatments resulting in smooth hair free skin. To maintain these results, simply repeat the treatment when needed. Time between treatments may vary based on your individual hair regrowth. - To enlarge this picture, please click on the image in the image gallery on the top of this page

Suitable hair and skin types



Philips Lumea works effectively on (naturally) dark blonde, brown and black hairs. As with other light-based treatments, Philips Lumea is NOT effective on red, light-blonde or white/grey hair. Philips Lumea is also NOT suitable for very dark skin.

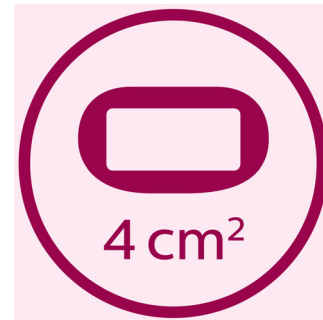
Application areas



Use with confidence to remove hair on face (upper lip, chin and sideburns) and body parts including legs, underarm, bikini area, belly and arms.

SC2009/60

Fast treatment on legs



Big treatment window for fast application on large areas like legs.

Extra safety for the face



The facial attachment has its own specially designed integrated light filter for safe and convenient use on the upper lip, chin and sideburns. It can also be used on other sensitive areas on the body, eg underarms and other hard-to-reach areas.



[asimpleswitch.com](https://www.asimpleswitch.com)

Philips Green Logo

Philips Green Products can reduce costs, energy consumption and CO2 emissions. How? They offer a significant environmental improvement in one or more of the Philips Green Focal Areas – Energy efficiency, Packaging, Hazardous substances, Weight, Recycling and disposal and Lifetime reliability.

Specifications

Technical specifications

- High performance lamp: Delivers > 250,000 flashes

Application areas

- Body areas: Arms, Legs, Belly, Bikini, Armpits
- Face areas: Chin, Sideburns, Upper lip

Attachments

- Body attachment (4cm2): For use below the neckline
- Bikini area attachment (2cm2): Special treatment bikini hair
- Facial attachment (2cm2): For safe application on face

Items included

- Charger: Multi voltage charger
- Instructions for use: User manual
- Storage: Luxurious pouch
- Accessory: Cleaning cloth

Power

- Charging time: 100 min

- Running time: Minimum 370 flashes
- Voltage: 100-240 V

Safety and adjustable settings

- Integrated UV filter: Protects skin from UV light
- 5 light energy settings: Adjustable to your skin type
- Integrated safety system: Prevent unintentional flashing

Service

- Warranty: 2 years global warranty

Application time

- Lower leg: 8 min
- Armpit: 1 min
- Bikini line: 1 min
- Face areas: 1 min

Application mode

- Slide and Flash: For convenient application
- Corded / cordless use: Cordless
- Stamp and Flash: For treatment on curvy areas



Issue date 2018-03-30

Version: 4.2.1

EAN: 08 71010 37473 38

© 2018 Koninklijke Philips N.V.
All Rights reserved.

Specifications are subject to change without notice.
Trademarks are the property of Koninklijke Philips N.V.
or their respective owners.

www.philips.com

* when following the treatment schedule