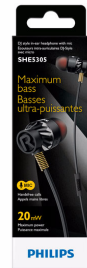




Philips
Headphones with mic

8.6-mm drivers/semi-closed back
In-ear

SHE5305BK



High impact bass

Small in size, Big in bass.

Featuring an explosive speaker driver and durable cable, the SHE5300 in-ear headphones deliver high-impact bass. With a robust chromed headphone body and rubberised protector, the headphones are as powerful as their appearance. Exceptional noise

Extra powerful sound

- "Quality 8.6 mm driver for the ultimate powerful sound "
- Enforced 2.5 mm diameter cable for more powerful sound

Ultimate wearing comfort

- Choose from 3 pairs of ear caps for the perfect fit for you
- Contoured earphone body for comfort during longer periods of use

Design for convenience

- Reinforced cable for durability
- Spring steel cable relief for tough usage
- Built-in microphone switches you from music to phone calls

PHILIPS

Headphones with mic
8.6-mm drivers/semi-closed back In-ear

SHE5305BK/00

Highlights

2.5 mm diameter cable

Enforced 2.5 mm diameter cable and a robust headphone housing, deliver a deep bass and great sound quality.

8.6 mm powerful driver



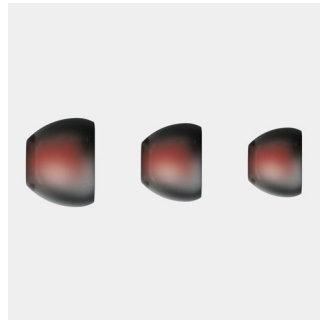
Quality 8.6 mm driver reinforced by a powerful magnet for efficient production of low frequency range.

Built-in microphone



Stay connected with the outside world with a built-in microphone that allows you to easily switch from listening to music to taking or placing calls.

Choice of 3 pairs of ear caps



Ear caps come in a choice of 3 sizes – small, medium and large – for a personalised and perfect fit.

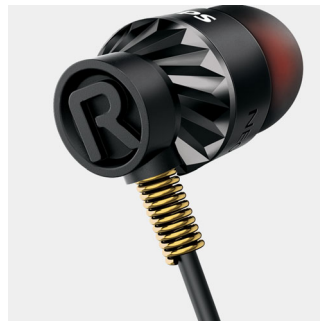
Contoured earphone body

Contoured earphone body allowing comfort for longer periods of wear.

Enforced cable

Enforced 2.5 mm diameter cable and robust headphone housing, deliver a great sound and a deep bass.

Spring steel cable relief



The spring steel cable relief and the rubberised back of the housing provide extra protection to withstand the toughest of usage.

Specifications

Design

- Colour: Black

Sound

- Acoustic system: Semi-closed
- Frequency response: 10 - 22,000 Hz
- Impedance: 16 Ohm
- Magnet type: Neodymium
- Sensitivity: 107 dB
- Speaker diameter: 8.6 mm
- Maximum power input: 20 mW

Connectivity

- Connector: 3.5 mm stereo
- Cable Connection: two-parallel, symmetric
- Cable length: 1.2 m
- Finishing of connector: Gold-plated
- Compatible with: iPhone®, BlackBerry®, HTC, LG, MOTOROLA, Nokia, Palm®, SAMSUNG, Sony Ericsson



Issue date 2016-07-20

Version: 1.0.8

12 NC: 8670 001 30314
EAN: 69 25970 70733 6

© 2016 Koninklijke Philips N.V.
All Rights reserved.

Specifications are subject to change without notice.
Trademarks are the property of Koninklijke Philips N.V.
or their respective owners.

www.philips.com