

PHILIPS

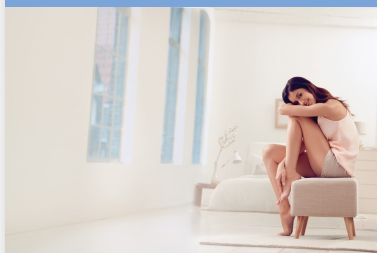
IPL – Hair removal device

Lumea Advanced

For use on body and face

15 minutes to treat lower legs

>250,000 lamp flashes



SC1997/00



Gentle, long-term hair reduction

Philips Lumea Advanced works wonders to prevent the reappearance of hair on body and face. Gentle pulses of light, applied regularly, keep skin silky-smooth every day.

Long lasting hair removal with IPL technology

- Enjoy smooth skin every day
- Adapted for safe and effective use in your own home
- Effortlessly effective
- Suitable for a wide variety of hair and skin types

Safe, fast and effective on body and face

- Safe and effective even on sensitive areas
- Large treatment window for fast application
- Integrated skin tone sensor
- Precision attachment for extra safety on the face
- Gentle treatment

Maximum freedom, minimum hassle

- No replacement parts, no hidden costs
- Slide and Flash mode for a more convenient application
- Five adjustable light energy settings

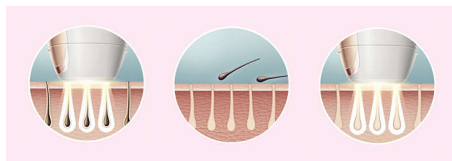
Highlights

IPL technology



Philips Lumea uses an innovative light-based technology called IPL (Intense Pulsed Light), derived from the technology used in professional beauty salons. Philips has adapted this technology for safe and effective use in the comfort of your own home. Philips worked closely with leading dermatologists to develop our breakthrough hair removal system. For more than 10 years we carried out extensive consumer research with more than 2000 volunteers.

Enjoy smooth skin every day



Philips Lumea applies gentle pulses of light to the hair root. As a consequence, the amount of hair your body grows gradually decreases. Repeating the treatment leaves your skin beautifully hair free and touchably smooth.

Effortlessly effective

Clinical results after treatment: **example 1 (leg)**



Clinical results after treatment: **example 2 (bikini line)**



Our clinical studies have shown significant hair reduction in as little as four fortnightly treatments resulting in smooth hair free skin. To maintain these results, simply repeat the treatment when needed. Time between

treatments may vary based on your individual hair regrowth. – To enlarge this picture, please click on the image in the image gallery on the top of this page

Suitable hair and skin types



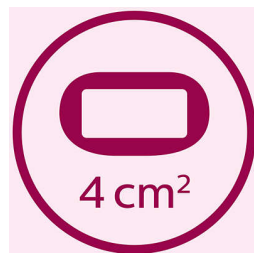
Philips Lumea works effectively on (naturally) dark blonde, brown and black hairs. As with other light-based treatments, Philips Lumea is NOT effective on red, light-blond or white/grey hair. This product is also NOT suitable for dark skin.

Application areas



Use with confidence to remove hair on face (upper lip, chin and sideburns) and body parts including legs, underarm, bikini area, belly and arms.

Fast treatment on legs



Big treatment window for fast application on large areas like legs.

Extra safety for the face



With the additional integrated light filter, it can be used for safe treatment of facial hair on the upper lip, chin, cheeks and other sensitive areas.

Skin Tone Sensor



The integrated skin tone sensor measures the treated skin complexion at the beginning of each session and occasionally during the session. If it detects a skin tone that is too dark for this product it will automatically stop emitting pulses.

Gentle treatment



Gentle to your skin.

Specifications

Technical specifications

High performance lamp: Delivers <gt/> 250,000 flashes

Application areas

Body areas: Arms, Legs, Belly, Bikini, Armpits

Face areas: Chin, Sideburns, Upper lip

Attachments

Precision attachment (2cm2): For safe application on face

Body attachment (4cm2): For use below the neckline

Items included

Instructions for use: User manual

Storage: Pouch

Adapter: 24V / 1500mA

Accessory: Cleaning cloth

Power

Voltage: 100–240 V

Corded use

Safety and adjustable settings

Integrated UV filter: Protects skin from UV light

5 light energy settings: Adjustable to your skin type

Integrated safety system: Prevent unintentional flashing

Skin Tone sensor: Detects your skin tone

Service

Warranty: 2 years global warranty

Application time

Lower leg: 8 min

Armpit: 1 min

Bikini line: 2 min

Face areas: 2 min

Application mode

Slide and Flash: For convenient application

Corded / cordless use: Corded

Stamp and Flash: For treatment on curvy areas

