

# Always there to help you

Register your product and get support at  
[www.philips.com/welcome](http://www.philips.com/welcome)



HTB5520

HTB5550

HTB5580

# Quick start guide

**PHILIPS**



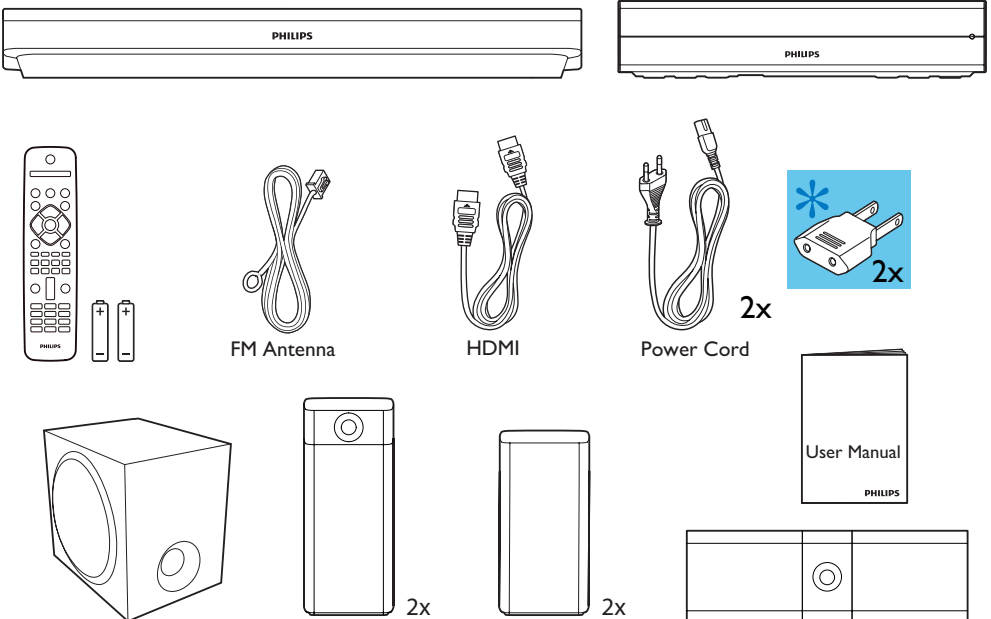
**EN** Before using your product, read all accompanying safety information

**ES** Antes de usar el producto, consulte la información de seguridad que se encuentra adjunta.



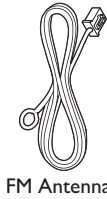
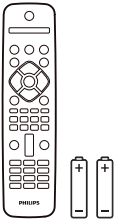
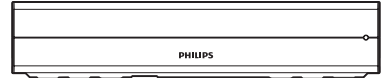
HTB5520

\* **ES** Adaptador suministrado como accesorio. No debe ser utilizado en las redes eléctricas en Argentina, su uso está destinado sólo para los demás países de América Latina.



HTB5550

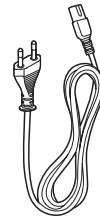
\* ES Adaptador suministrado como accesorio. No debe ser utilizado en las redes eléctricas en Argentina, su uso está destinado sólo para los demás países de América Latina.



FM Antenna

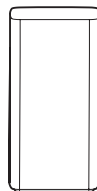
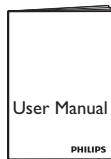
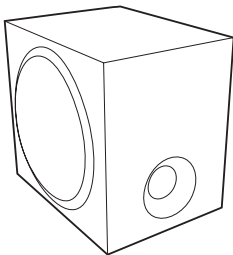
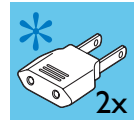


HDMI

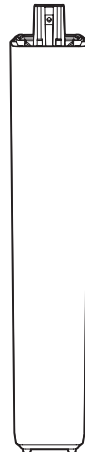


Power Cord

2x



2x



2x



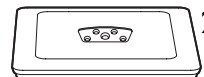
2x



8x



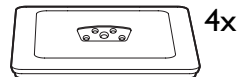
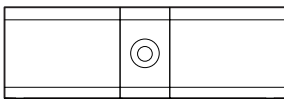
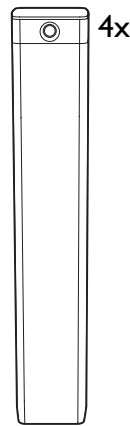
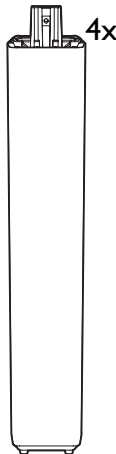
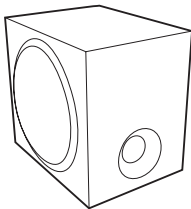
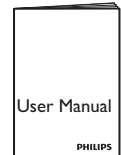
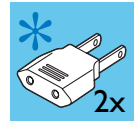
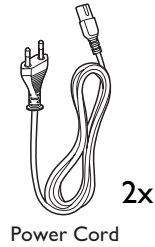
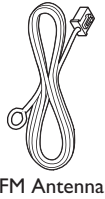
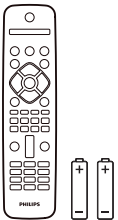
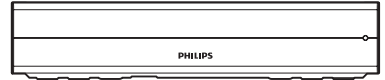
2x



2x

HTB5580

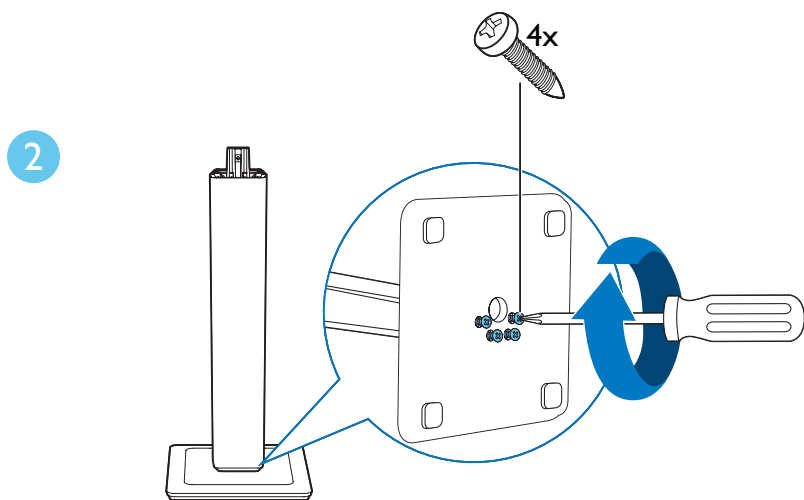
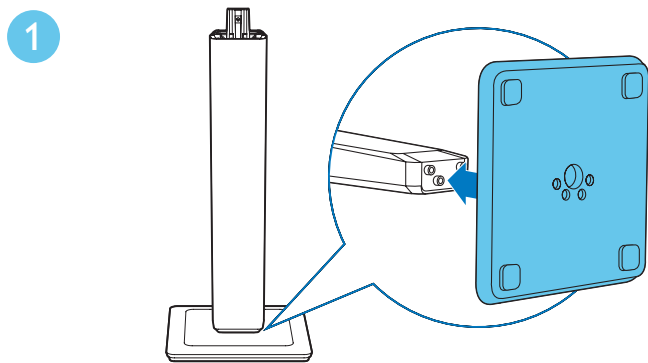
\* ES Adaptador suministrado como accesorio. No debe ser utilizado en las redes eléctricas en Argentina, su uso está destinado sólo para los demás países de América Latina.



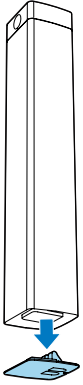
# 1

**EN** Stand mount the speakers  
Applied to HTB5550 and HTB5580 only

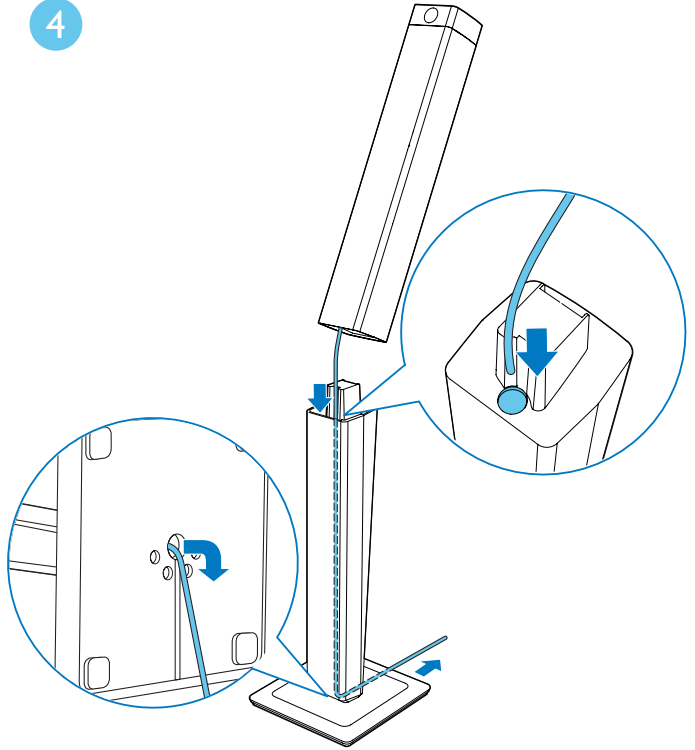
**ES** Montaje de los altavoces con base o soporte  
Solo aplica a los modelos HTB5550 y HTB5580



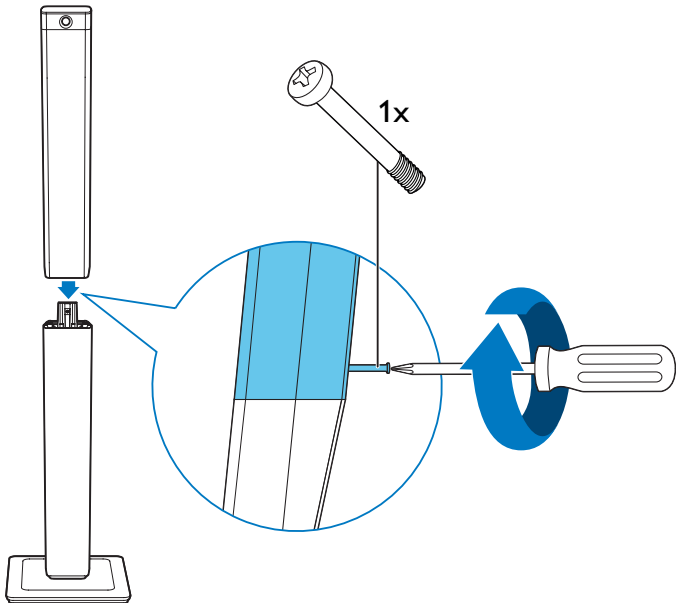
3



4



5

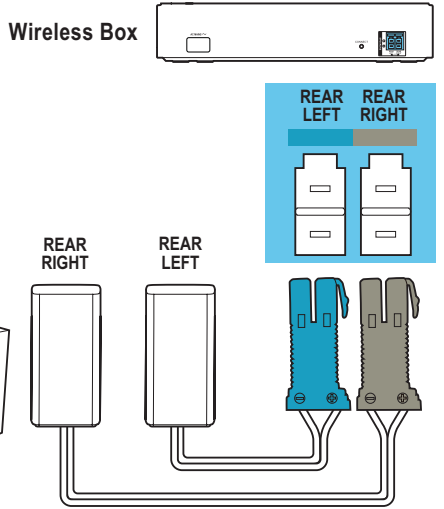
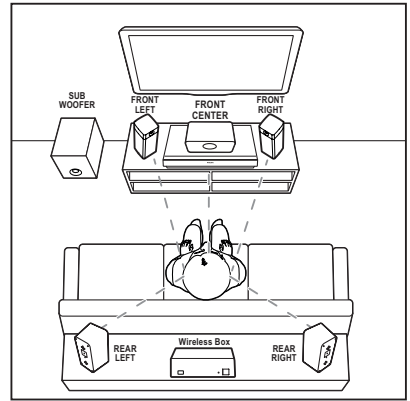
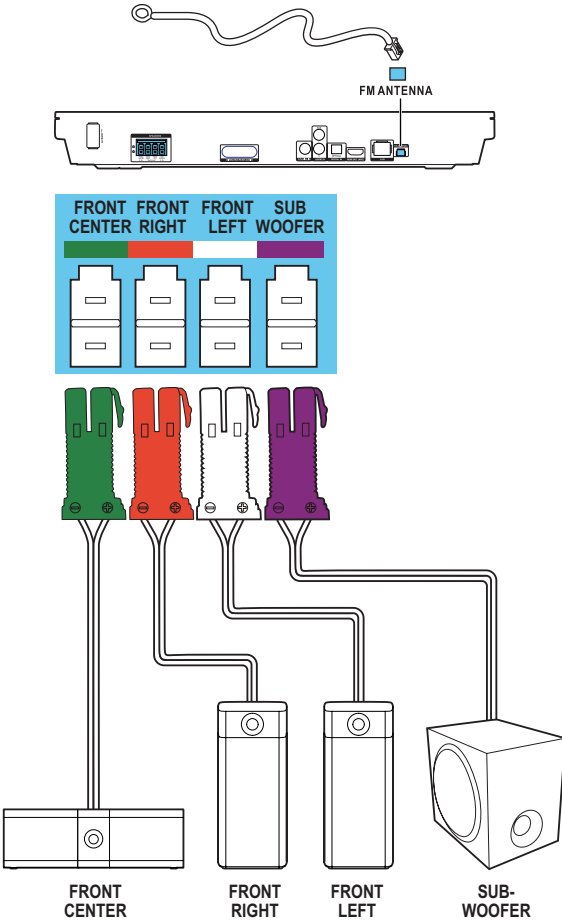


# 2

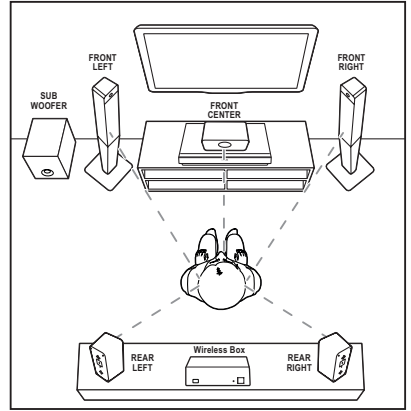
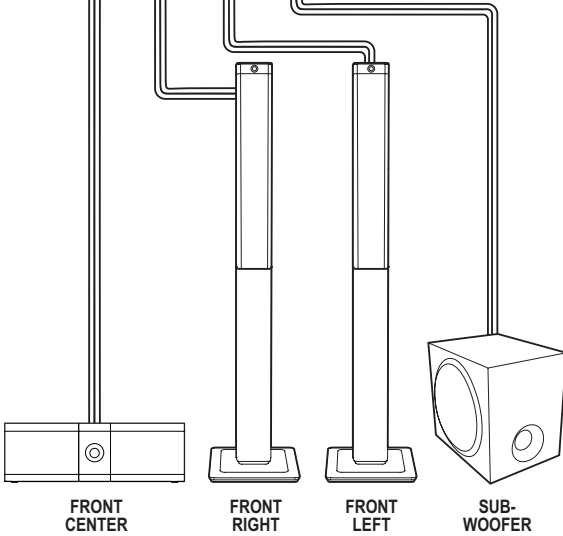
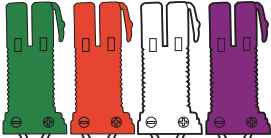
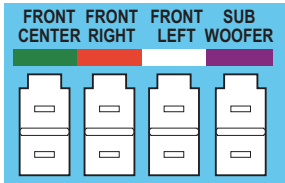
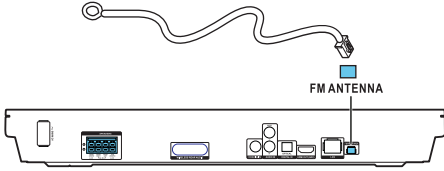
**EN** Connect the home theater

**ES** Conexión del Home Theater

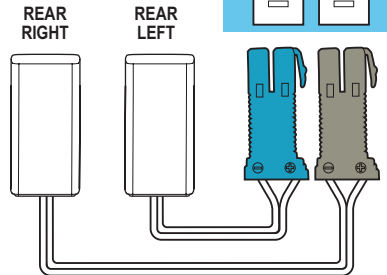
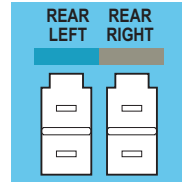
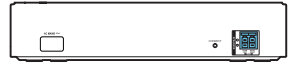
HTB5520



# HTB5550

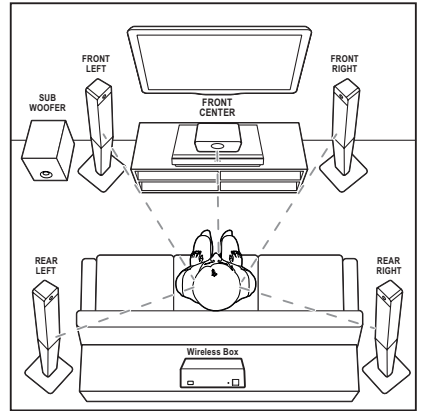
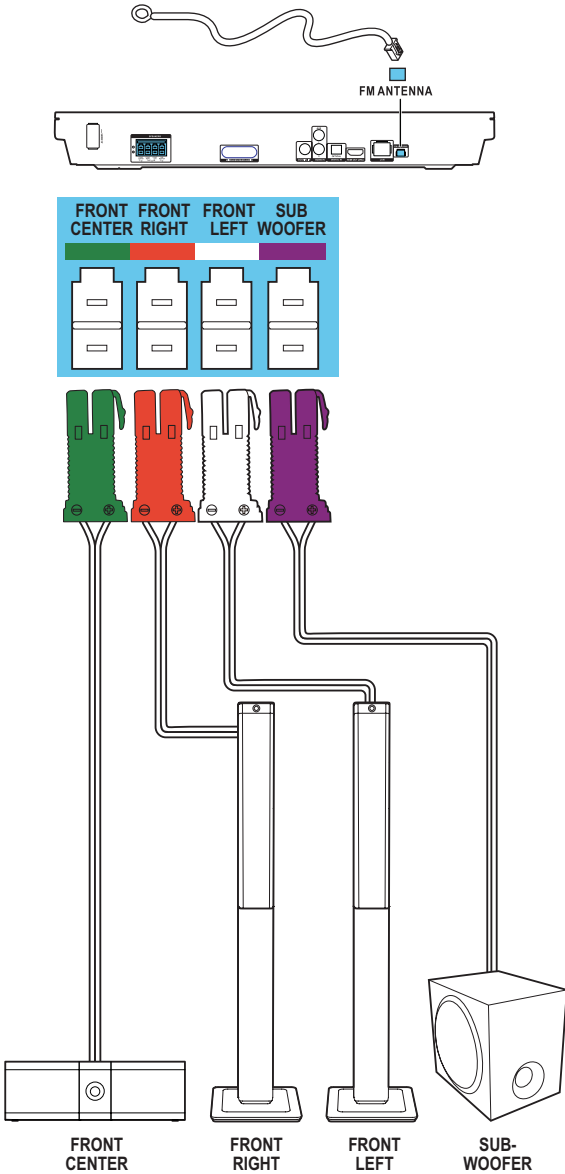


## Wireless Box

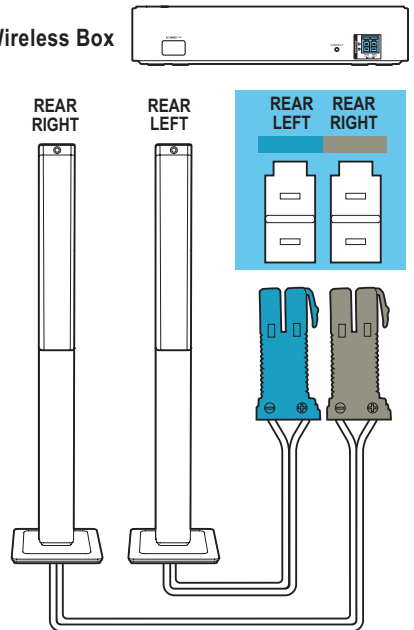




HTB5580



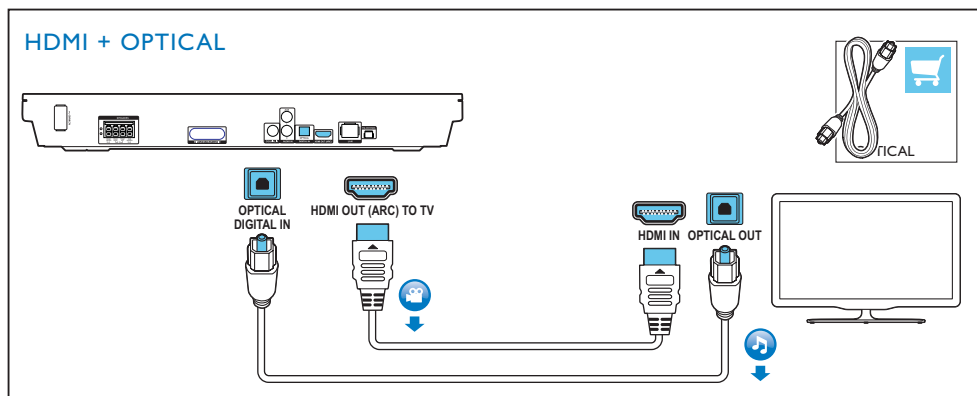
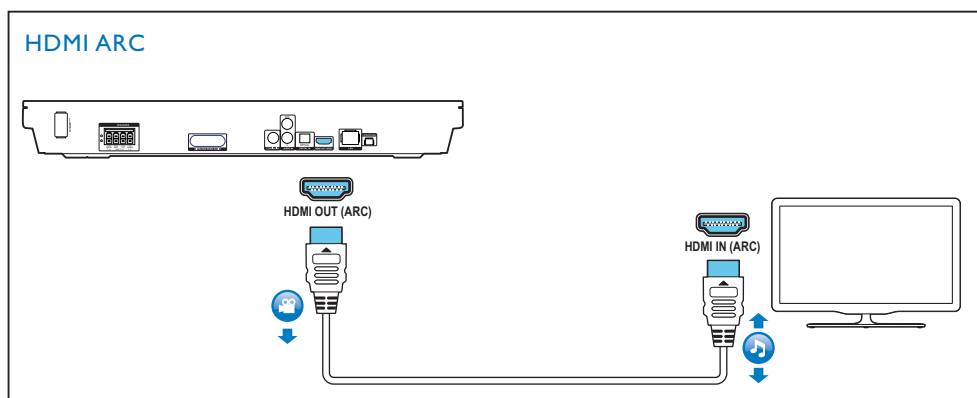
Wireless Box



# 3

**EN** Connect to TV in one of these ways

**ES** Conecte al TV de alguna de las siguientes maneras



## HDMI + COAXIAL



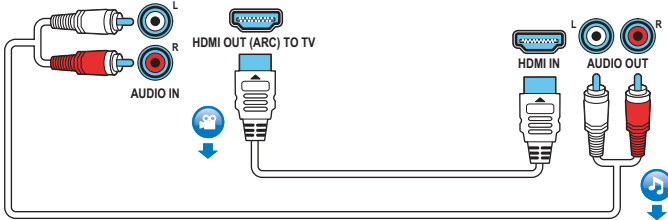
COAXIAL IN  
HDMI OUT (ARC)



## HDMI + AUDIO L/R



L  
R  
AUDIO IN  
HDMI OUT (ARC) TO TV

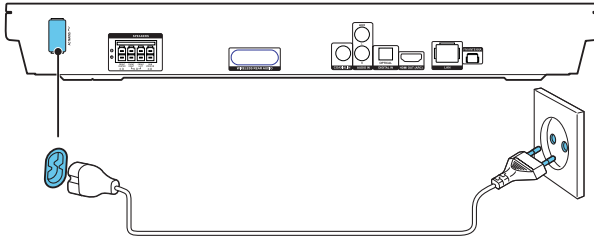


# 4a

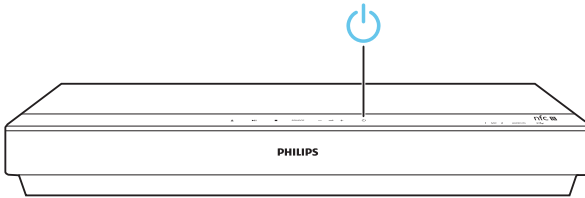
**EN** Switch on the home theater

**ES** Encendido del Home Theater

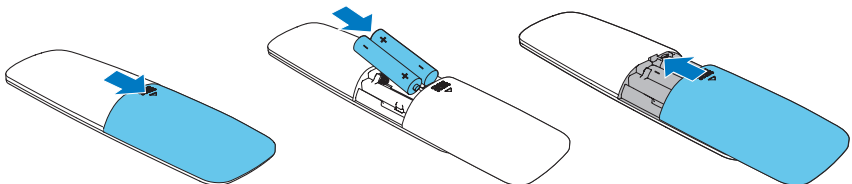
1



2



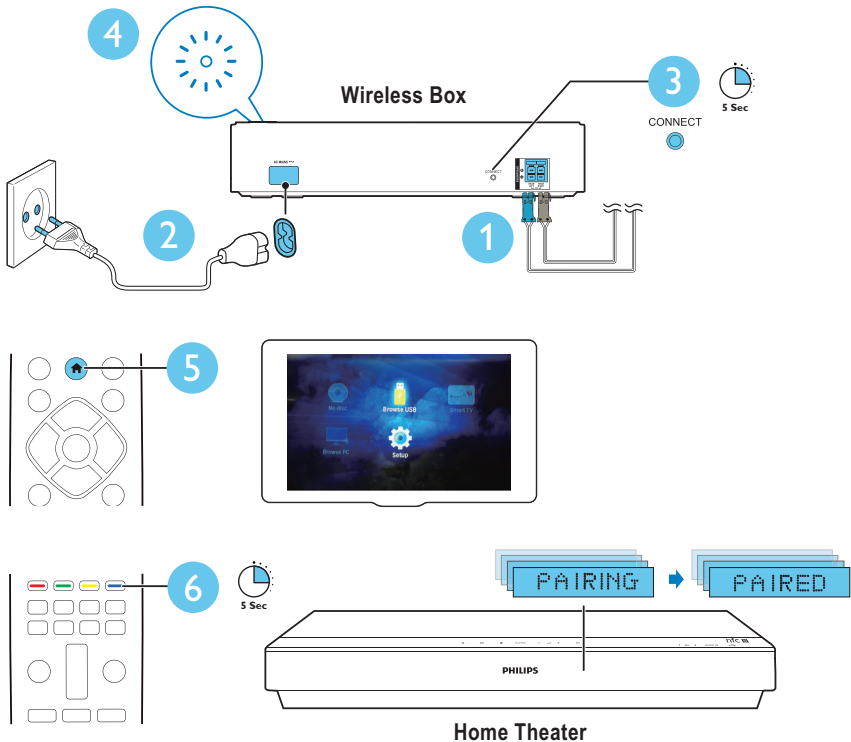
3



# 4b

**EN** Pair up the rear speakers (For the written instructions on pair-up of the rear speakers, refer to Chapter 3 “Connect and setup” of the User Manual.)

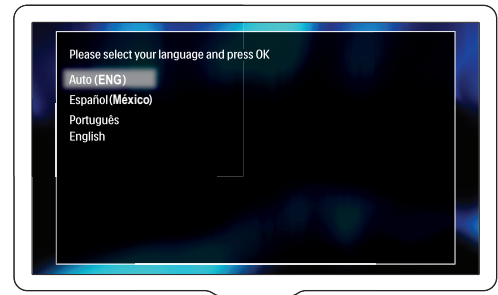
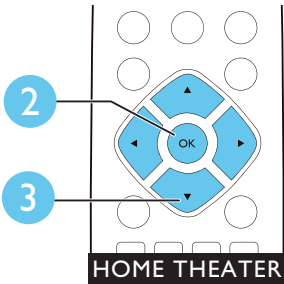
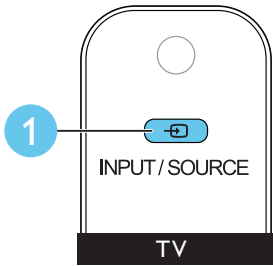
**ES** Empareje los altavoces posteriores (para acceder a las instrucciones escritas acerca del emparejamiento de los altavoces posteriores, consulte el capítulo 3 “Conexión y configuración” del manual de usuario)



# 5

**EN** Complete the first time setup

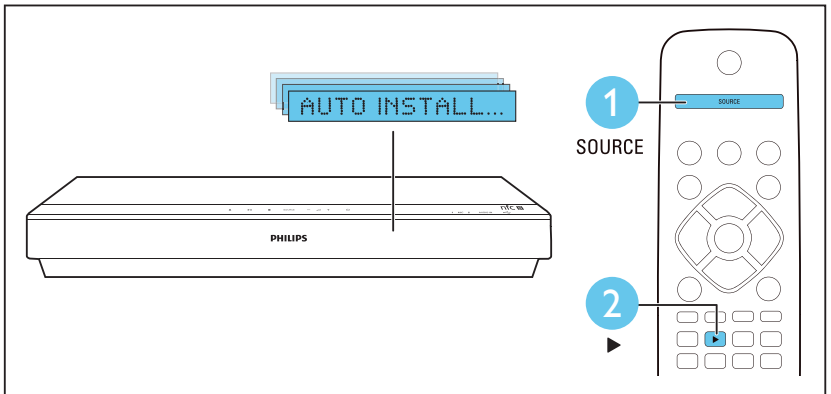
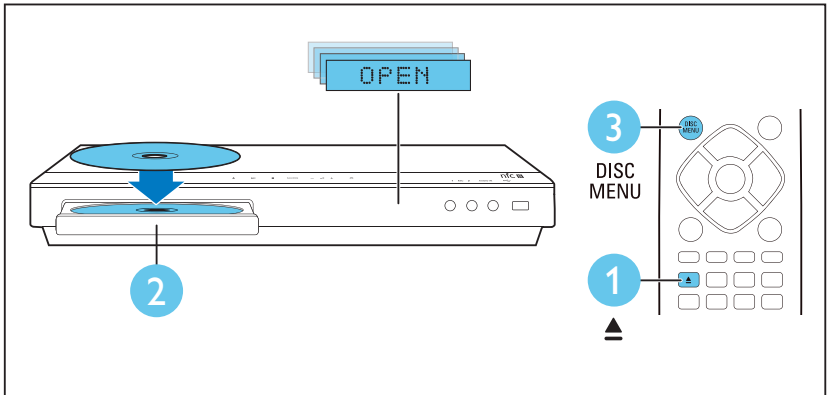
**ES** Proceso de configuración inicial

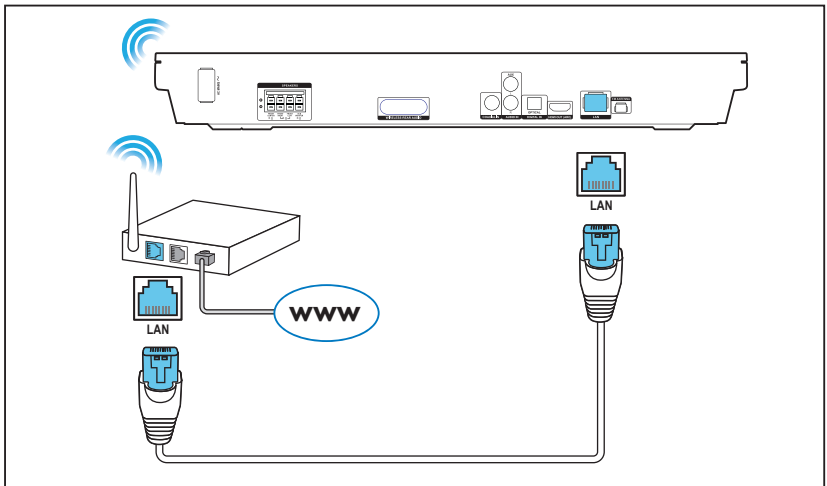
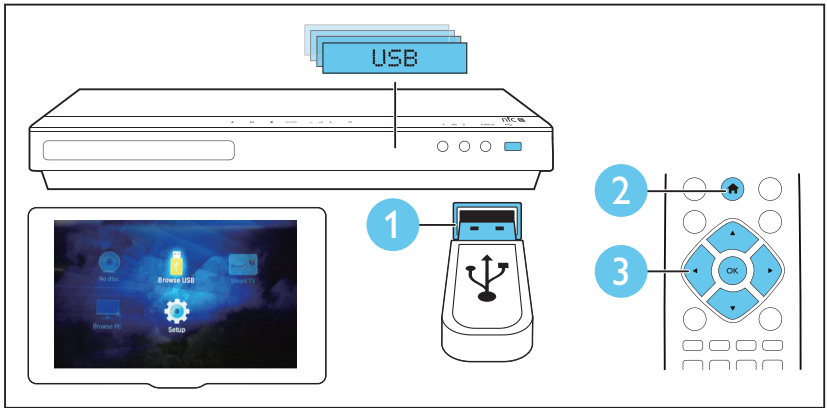
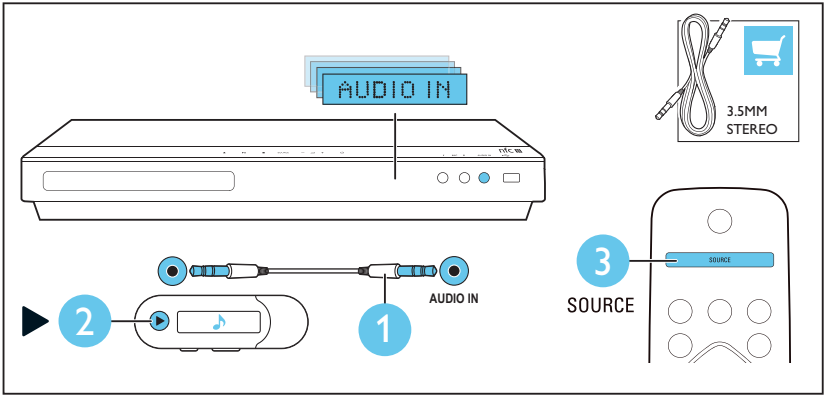


# 6

EN Use your home theater

ES Uso del sistema de Home Theater



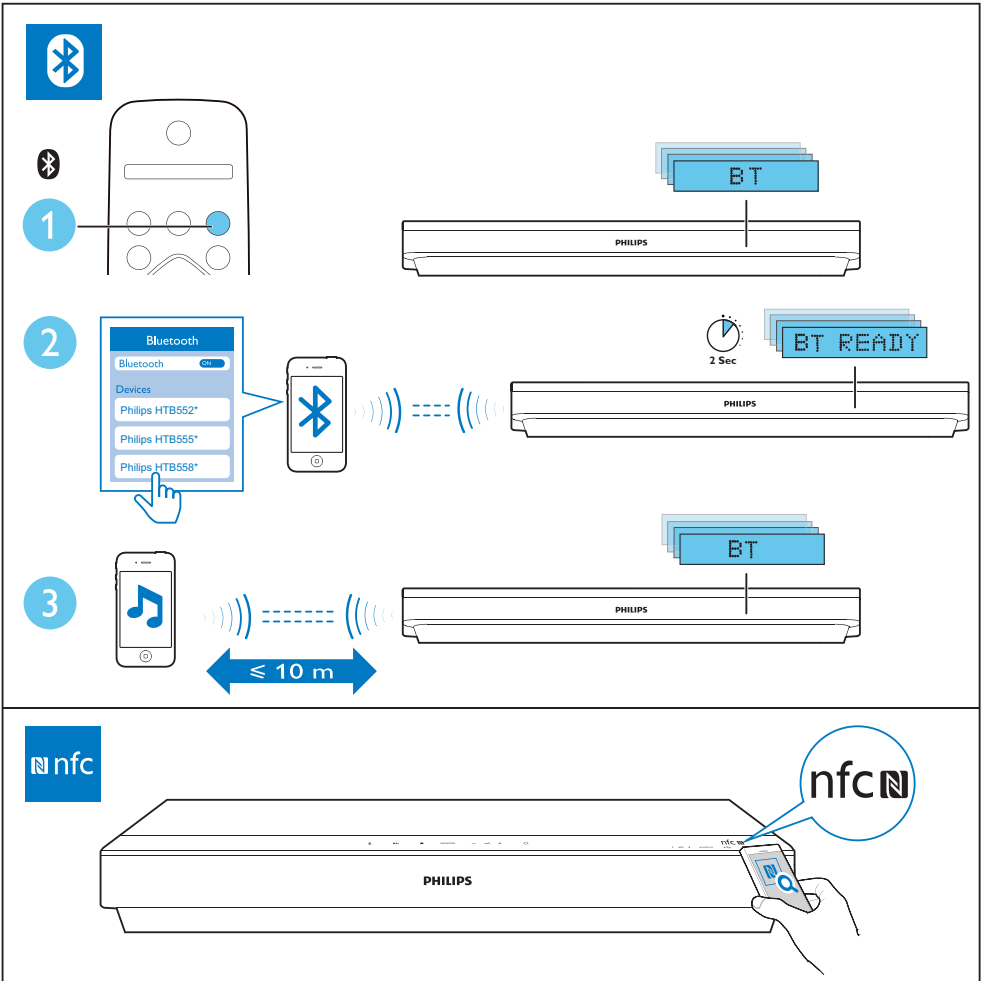




# 7

**EN** Play audio through Bluetooth or connect Bluetooth via NFC

**ES** Reproduzca audio a través de Bluetooth o conecte el Bluetooth mediante NFC





**EN** For more information about using this product, visit [www.philips.com/support](http://www.philips.com/support)

**ES** Para obtener más información acerca de este producto, visite [www.philips.com/support](http://www.philips.com/support)



[www.philips.com/support](http://www.philips.com/support)



Specifications are subject to change without notice  
© 2014 Koninklijke Philips N.V. All rights reserved.  
Trademarks are the property of Koninklijke Philips N.V. or their respective owners.

HTB5520/HTB5550/HTB5580\_55\_QSG\_V1.0

