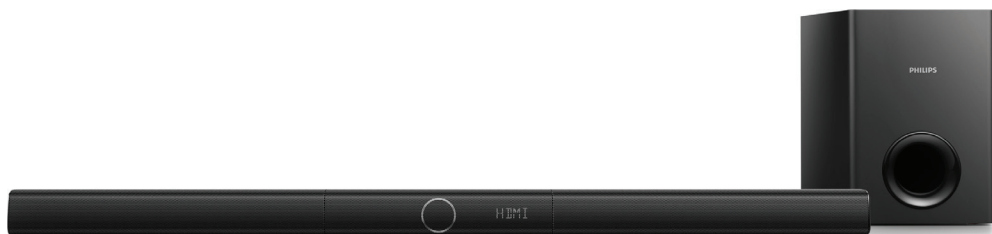


# Always there to help you

Register your product and get support at  
[www.philips.com/support](http://www.philips.com/support)



HTL2183B



# User manual

# PHILIPS



# Contents

---

<b>1</b>	<b>Important</b>	2
	Safety	2
	Care for your product	3
	Care of the environment	3
	Help and support	3

---

<b>2</b>	<b>Your product</b>	4
	Main unit	4
	Remote control	4
	Connectors	5

---

<b>3</b>	<b>Connect</b>	6
	Placement	6
	Connect audio from TV	6
	Connect audio from other devices	7

---

<b>4</b>	<b>Use your product</b>	9
	Adjust the volume	9
	Choose your sound	9
	Play audio through Bluetooth	9
	MP3 player	10
	USB storage devices	10
	Auto standby	11
	Set display brightness	11
	Apply factory settings	11

---

<b>5</b>	<b>Update software</b>	11
	Check software version	11
	Update software via USB	11

---

<b>6</b>	<b>Wall mount</b>	12
----------	-------------------	----

---

<b>7</b>	<b>Product specifications</b>	13
----------	-------------------------------	----

---

<b>8</b>	<b>Troubleshooting</b>	14
----------	------------------------	----

# 1 Important

Read and understand all instructions before you use your product. If damage is caused by failure to follow instructions, the warranty does not apply.

---

## Safety

### Risk of electric shock or fire!

- Before you make or change any connections, make sure that all devices are disconnected from the power outlet.
- Never expose the product and accessories to rain or water. Never place liquid containers, such as vases, near the product. If liquids are spilt on or into the product, disconnect it from the power outlet immediately. Contact Consumer Care to have the product checked before use.
- Never place the product and accessories near naked flames or other heat sources, including direct sunlight.
- Never insert objects into the ventilation slots or other openings on the product.
- Where the mains plug or an appliance coupler is used as the disconnect device, the disconnect device shall remain readily operable.
- Batteries (battery pack or batteries installed) shall not be exposed to excessive heat such as sunshine, fire or the like.
- Disconnect the product from the power outlet before lightning storms.
- When you disconnect the power cord, always pull the plug, never the cable.

### Risk of short circuit or fire!

- For identification and supply ratings, see the type plate at the back or bottom of the product.
- Before you connect the product to the power outlet, ensure that the power voltage matches the value printed on the

back or bottom of the product. Never connect the product to the power outlet if the voltage is different.

### Risk of injury or damage to this product!

- For wall mounting, this product must be securely attached to the wall in accordance with the installation instructions. Use only the supplied wall mount bracket (if available). Improper wall mounting may result in accident, injury or damage. If you have any query, contact Consumer Care in your country.
- Never place the product or any objects on power cords or on other electrical equipment.
- If the product is transported in temperatures below 5°C, unpack the product and wait until its temperature matches room temperature before connecting it to the power outlet.
- Parts of this product can be made of glass. Handle with care to avoid injury and damage.

### Risk of overheating!

- Never install this product in a confined space. Always leave a space of at least four inches around the product for ventilation. Ensure curtains or other objects never cover the ventilation slots on the product.

### Risk of contamination!

- Do not mix batteries (old and new or carbon and alkaline, etc.).
- Danger of explosion if batteries are incorrectly replaced. Replace only with the same or equivalent type.
- Remove batteries if they are exhausted or if the remote control is not to be used for a long time.
- Batteries contain chemical substances, they should be disposed of properly.

### Risk of swallowing batteries!

- The product/remote control may contain a coin/button type battery, which can be swallowed. Keep the battery out of reach of children at all times! If swallowed, the

battery can cause serious injury or death. Severe internal burns can occur within two hours of ingestion.

- If you suspect that a battery has been swallowed or placed inside any part of the body, seek immediate medical attention.
- When you change the batteries, always keep all new and used batteries out of reach of children. Ensure that the battery compartment is completely secure after you replace the battery.
- If the battery compartment cannot be completely secured, discontinue use of the product. Keep out of reach of children and contact the manufacturer.



This is CLASS II apparatus with double insulation, and no protective earth provided.



Use only the power supplies listed in the user manual.

---

## Care for your product

Use only microfiber cloth to clean the product.

---

## Care of the environment

### Disposal of your old product



Your product is designed and manufactured with high quality materials and components, which can be recycled and reused.

Do not throw away the product with the normal household waste at the end of its life, but hand it in at an official collection point or recycling. By doing this, you help to preserve the environment.

---

## Help and support

For extensive online support, visit [www.philips.com/support](http://www.philips.com/support) to:

- download the user manual and the quick start guide
- watch video tutorials (available only for selected models)
- find answers to frequently answered questions (FAQs)
- email us a question
- chat with our support representative.

Follow the instructions on the website to select your language, and then enter your product model number:

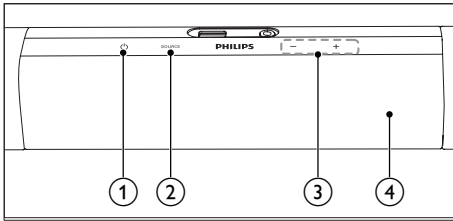
Alternatively, you can contact Consumer Care in your country. Before you contact, note down the model number and serial number of your product. You can find this information on the back or bottom of your product.

## 2 Your product

Congratulations on your purchase, and welcome to Philips! To fully benefit from the support that Philips offers (e.g. notification of product software upgrade), register your product at [www.philips.com/welcome](http://www.philips.com/welcome).

### Main unit

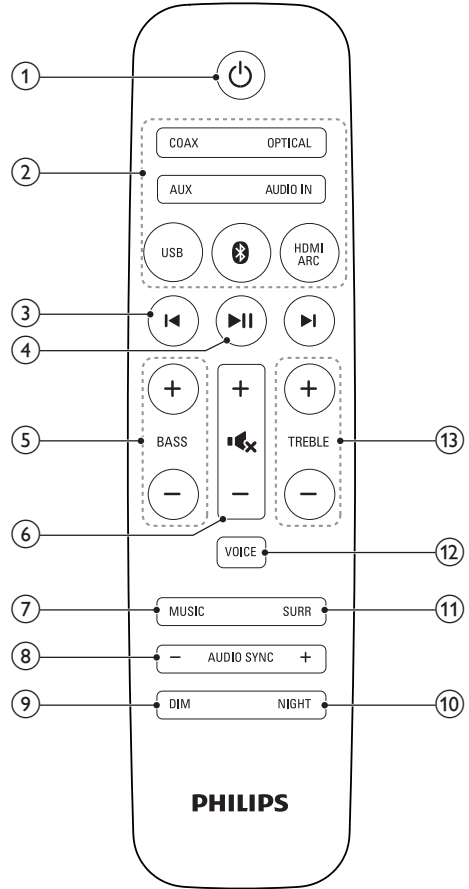
This section includes an overview of the main unit.



- ① Switch this product on or to standby.
- ② **SOURCE**  
Select an input source for this product.
- ③ **Volume +/-**  
Increase or decrease volume.
- ④ **Display panel**

### Remote control

This section includes an overview of the remote control.




- ① **(Standby-On)**  
Switch this product on or to standby.
- ② **Source buttons**  
**COAX:** Switch your audio source to the coaxial connection.  
**OPTICAL:** Switch your audio source to the optical connection.  
**AUX:** Switch your audio source to the AUX connection.

**AUDIO IN:** Switch your audio source to the MP3 connection (3.5mm jack).

**USB:** Switch to USB mode.

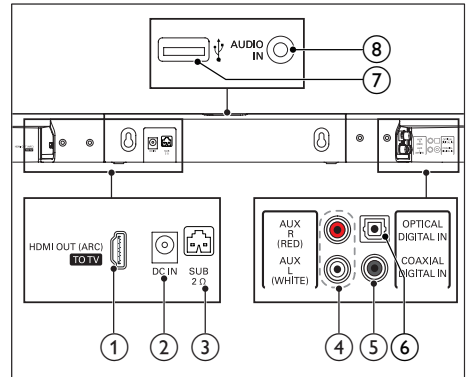
**Bluetooth:** Switch to Bluetooth mode.

**HDMI ARC:** Switch your source to HDMI ARC connection.

- 3 **◀ / ▶ (Previous/Next)**  
Skip to the previous or next track in USB mode.
- 4 **▶ || (Play/Pause)**  
Start, pause or resume play in USB mode.
- 5 **BASS +/-**  
Increase or decrease bass.
- 6 **Volume control**
  - +/-: Increase or decrease volume.
  - : Mute or restore volume.
- 7 **MUSIC**  
Select stereo sound mode for the best music experience.
- 8 **AUDIO SYNC +/-**  
Increase or decrease audio delay.
- 9 **DIM**  
Set the brightness of the display panel for this product.
- 10 **NIGHT**  
Turn night mode on or off.
- 11 **SURR**  
Select surround sound mode for the best movie experience.
- 12 **VOICE**  
Select voice sound mode to enhance voice clarity.
- 13 **TREBLE +/-**  
Increase or decrease treble.

## Connectors

This section includes an overview of the connectors available on this product.



- 1 **HDMI OUT (ARC) - TO TV**  
Connect to the HDMI (ARC) input on the TV.
- 2 **DC IN**  
Connect to the power supply.
- 3 **SUBWOOFER**  
Connect to the supplied subwoofer.
- 4 **AUX IN (L/R)**  
Connect to an analog audio output on the TV or an analog device.
- 5 **DIGITAL IN-COAXIAL**  
Connect to a coaxial audio output on the TV or a digital device.
- 6 **DIGITAL IN-OPTICAL**  
Connect to an optical audio output on the TV or a digital device.
- 7 **↔ (USB)**
  - Connect to a USB storage device for audio media play.
  - Upgrade software of this product.
  - Charge a USB device.
- 8 **AUDIO IN**  
Audio input from, for example, an MP3 player (3.5mm jack).

# 3 Connect

This section helps you connect this product to a TV and other devices.

For information about the basic connections of this product and accessories, see the quick start guide.

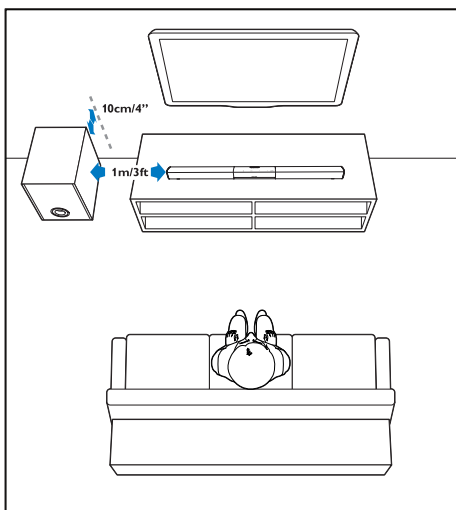
## Note

- For identification and supply ratings, see the type plate at the back or bottom of the product.
- Before you make or change any connections, make sure that all devices are disconnected from the power outlet.

## Placement

Place the subwoofer at least 1 meter (3 feet) away from the main unit, and 10 centimeters (4 inches) away from the wall.

For best results, place your subwoofer as shown below.



## Connect audio from TV

Connect this product to a TV. You can listen to audio from TV programs through the speakers of this product.

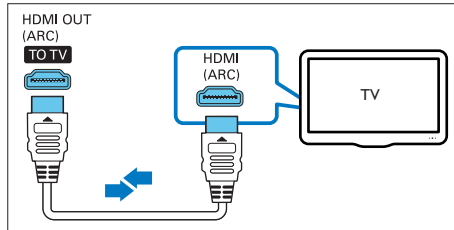
### Option 1: Connect to TV through HDMI (ARC)

#### Best quality audio

This product supports HDMI with Audio Return Channel (ARC). With the ARC feature, you can hear the TV audio through this product by using a single HDMI cable.

#### What you need

- A High Speed HDMI Cable.
- Your TV supports both HDMI ARC and HDMI-CEC (see the TV user manual for details).
- For some TV models, enable the external speaker output from the TV setting menu (see the TV user manual for details).



- 1 Using a High Speed HDMI cable, connect the **HDMI OUT (ARC)** connector on this product to the **HDMI ARC** connector on the TV.
  - The **HDMI ARC** connector on the TV might be labeled differently. For details, see the TV user manual.
- 2 On your TV, turn on HDMI-CEC operations.
  - For HDMI-CEC issues on your TV, see the TV user manual to make sure that the HDMI-CEC setup is correct, or contact the TV manufacturer if needed.



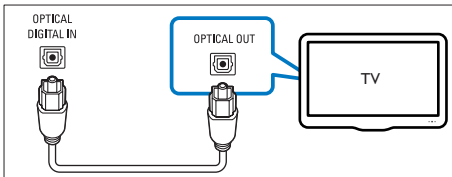
- 3 Press **HDMI ARC** on the remote control of this product to enable the HDMI ARC connection.

#### Note

- 100% interoperability with all HDMI-CEC devices is not guaranteed.
- If your TV is not HDMI ARC compliant, connect an audio cable to hear the TV audio through this product.

### Option 2: Connect to TV through optical cable

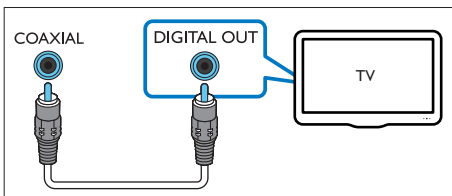
#### Best quality audio



- 1 Using an optical cable, connect the **OPTICAL** connector on this product to the optical output on the TV.
  - The digital optical output on the TV might be labeled **OPTICAL OUT**, **SPDIF** or **SPDIF OUT**.
- 2 Press **OPTICAL** on the remote control of this product to enable the optical connection.

### Option 3: Connect to TV through coaxial cable

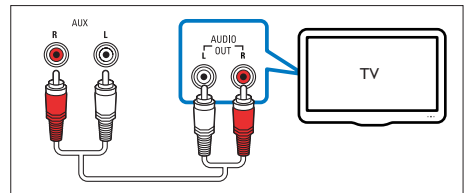
#### Best quality audio



- 1 Using a coaxial cable, connect the **COAXIAL** connector on this product to the coaxial output on the TV.
  - The digital coaxial output on the TV might be labeled **COAXIAL/DIGITAL OUT** or **DIGITAL AUDIO OUT**.
- 2 Press **COAX** on the remote control of this product to enable the coaxial connection.

### Option 4: Connect to TV through analog audio cables

#### Basic quality audio



- 1 Using an analog audio cable, connect the **AUX** connectors on this product to the analog audio output on the TV.
  - The analog audio output on the TV might be labeled **AUDIO OUT**.
- 2 Press **AUX** on the remote control of this product to enable the analog audio connection.

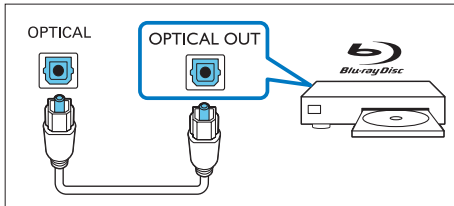
### Connect audio from other devices

You may also play audio from other devices through the speakers of this product.

---

## Option 1: Connect to other device through optical cable

Best quality audio

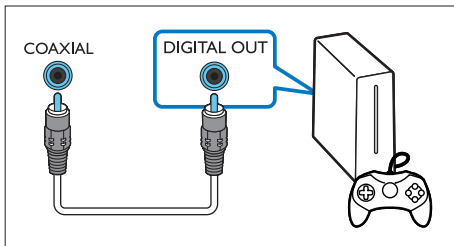


- 1 Using an optical cable, connect the **OPTICAL** connector on this product to the optical output on the external device.
  - The digital optical output on the external device might be labeled **OPTICAL OUT, SPDIF** or **SPDIF OUT**.
- 2 Press **OPTICAL** on the remote control of this product to enable the optical connection.

---

## Option 2: Connect to other device through coaxial cable

Best quality audio

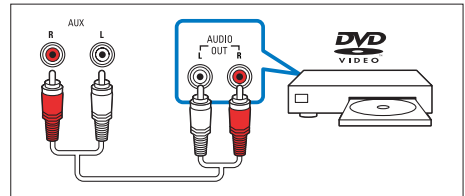


- 1 Using a coaxial cable, connect the **COAXIAL** connector on this product to the coaxial output on the external device.
  - The digital coaxial output on the external device might be labeled **COAXIAL/DIGITAL OUT** or **DIGITAL AUDIO OUT**.
- 2 Press **COAX** on the remote control of this product to enable the coaxial connection.

---

## Option 3: Connect to other device through analog audio cables

Basic quality audio



- 1 Using an analog audio cable, connect the **AUX** connector on this product to the analog audio output on the external device.
  - The analog audio output on the external device might be labeled **AUDIO OUT**.
- 2 Press **AUX** on the remote control of this product to enable the analog audio connection.

# 4 Use your product

This section helps you use this product to play media from a wide range of sources.

## Before you start

- Make the necessary connections described in the quick start guide or download the user manual from [www.philips.com/support](http://www.philips.com/support).
- Switch this product to the correct source for other devices.

---

## Adjust the volume

- 1 Press **Volume +/-** to increase or decrease a volume level.
  - To mute sound, press **MUTE**.
  - To restore the sound, press **MUTE** again or press **Volume +/-**.

---

## Choose your sound

This section helps you choose the ideal sound for your video or music.

---

### Sound mode

Select predefined sound modes to suit your video or music.

- Press **SURR** to create a surround listening experience. Ideal for watching movie.
- Press **MUSIC** to create stereo sound. Ideal for listening to music.
- Press **VOICE** to create sound effect which makes human voice more clear and outstanding for listening.

---

### Equalizer

Change the high frequency (treble) and low frequency (bass) settings of this product.

- 1 Press **TREBLE +/-** or **BASS +/-** to change the frequency.

---

### Synchronize video and sound

If the audio and video are not synchronized, delay the audio to match the video.

- 1 Press **AUDIO SYNC +/-** to synchronize the audio with the video.
  - **AUDIO SYNC +** increases the sound delay, and **AUDIO SYNC -** decreases the sound delay.

---

### Night mode

For quiet listening, night mode decreases the volume of loud sounds when audio is played. Night mode is only available for Dolby Digital soundtracks.

- 1 Press **NIGHT** to turn night mode on or off.
  - ↳ When night mode is turned on, **ON NIGHT** scrolls twice on the display panel.
  - ↳ When night mode is turned off, **OFF NIGHT** scrolls twice on the display panel.

---

## Play audio through Bluetooth

Through Bluetooth, connect this product with your Bluetooth device (such as an iPad, iPhone, iPod touch, Android phone, or laptop), and then you can listen to the audio files stored on the device through the speakers of this product.

### What you need

- A Bluetooth device which supports Bluetooth profile A2DP, AVRCP and with Bluetooth version as 4.0 + EDR.

- The maximum operational range between the main unit and a Bluetooth device is approximately 10 meters (30 feet).

- 1 Press **0** on the remote control to switch this product to Bluetooth mode.
  - ↳ **BT** is displayed on the display panel, blinking.
- 2 On the Bluetooth device, switch on Bluetooth, search for and select **Philips HTL2183** to start connection (see the user manual of the Bluetooth device on how to enable Bluetooth).
  - ↳ During connection, **BT** on the display panel blinks.
- 3 Wait until this product beeps.
  - ↳ When the Bluetooth connection succeeds, **BT** is displayed on the display panel.
  - ↳ If the connection fails, **BT** on the display panel blinks continuously.
- 4 Select and play audio files or music on your Bluetooth device.
  - During play, if a call is coming, music play is paused. Play resumes when the call ends (this feature is dependent on the connected mobile phone).
  - If your Bluetooth device supports AVRCP profile, on the remote control you can press **◀ / ▶** to skip to a track, or press **▶||** to pause/resume play.
- 5 To exit Bluetooth, select other source.
  - When you switch back to Bluetooth mode, Bluetooth connection remains active.

### Note

- The music streaming may be interrupted by obstacles between the device and this product, such as wall, metallic casing that covers the device, or other devices nearby that operate in the same frequency.
- If you want to connect this product with another Bluetooth device, press and hold **0** on the remote control to disconnect the currently connected Bluetooth device.

---

## MP3 player

Connect your MP3 player to play your audio files or music.

### What you need

- An MP3 player.
- A 3.5mm stereo audio cable.

- 1 Using the 3.5mm stereo audio cable, connect the MP3 player to the **AUDIO IN** connector on this product.
- 2 Press **AUDIO IN** on the remote control.
- 3 Press the buttons on the MP3 player to select and play audio files or music.

---

## USB storage devices

Enjoy audio on a USB storage device, such as an MP3 player and USB flash memory, etc.

### What you need

- A USB storage device that is formatted for FAT or NTFS file systems, and complies with the Mass Storage Class.
- An MP3 file on a USB storage device

- 1 Connect a USB storage device to this product.
- 2 Press **USB** on the remote control.
- 3 Use the remote control to control play.
  - Press **▶||** to start, pause or resume play.
  - Press **◀ / ▶** to skip to the previous or next track.
  - During USB play, press and hold **USB** to enter repeat mode, then press **USB** to select one of the following play modes.
    - **ONE RPT**: repeat the current track.
    - **ALL RPT**: repeat all the tracks in one folder.
    - **SHUFFLE**: play randomly in one folder.
    - **OFF RPT**: exit repeat or shuffle play mode.

## Note

- This product may not be compatible with certain types of USB storage device.
- If you use a USB extension cable, USB HUB, or USB multi-reader; the USB storage device may not be recognized.
- Digital camera PTP and MTP protocols are not supported.
- Do not remove the USB storage device while it is being read.
- DRM-protected music files (MP3) are not supported.
- Support a USB port: 5V ---, 1A.

## Auto standby

When playing media from a connected device, this product automatically switches to standby after 15 minutes of button inactivity and no audio/video play from a connected device.

## Set display brightness

You can press **DIM** repeatedly to select a different brightness level of the display panel on this product.

If you select **AUTO OFF**, LED message is switched off after 10 seconds of button inactivity.

## Apply factory settings

You can reset this product to the default settings programmed at the factory.

- 1 In any source mode, on the remote control press **Volume -**, **BASS -**, and **TREBLE -** in sequence within three seconds.
  - ↳ When the factory settings restore is complete, the product automatically switches off and restarts.




# 5 Update software

To get the best features and support, update your product with the latest software.

## Check software version

In any source mode, on the remote control press **TREBLE -**, **BASS -**, and **Volume -** in sequence.

## Update software via USB

- 1 Check the latest software version on [www.philips.com/support](http://www.philips.com/support).
  - Search for your model and click on "Software and drivers".
- 2 Download the software into a USB storage device.
  - ① **Unzip the download if zipped, and make sure that the unzipped file is named "HTL2183B.bin".**
  - ② **Put the "HTL2183B.bin" file in the root directory.**
- 3 Connect the USB storage device to the  (USB) connector on this product.
- 4 Press **HDMI ARC** to switch this product to the HDMI ARC source.
- 5 On the remote control, within six seconds press  twice then **Volume +** once, and then hold down **SURR**.
  - ↳ On the display panel, "UPG" (upgrade) blinks slowly, then blinks quickly.
- 6 When "UPG" blinks fast, press  to start the update.
  - ↳ Then "UPG" (upgrade) is displayed on the display panel.

- 7 Wait until the update is completed.  
↳ If the update is complete, this product automatically turns off and on again.

### ! Caution

- Do not turn off the power or remove the USB storage device when the software update is in progress because you might damage this product.

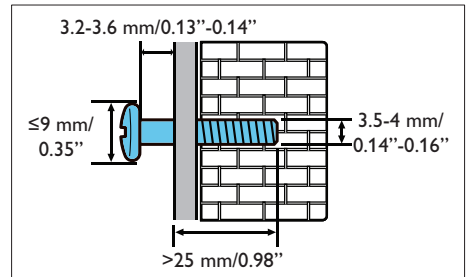
## 6 Wall mount

### ☰ Note

- Before wall mounting, make sure the wall can support the weight of this product.
- For wall mounting, this product must be securely attached to the wall in accordance with the installation instructions. Improper wall mounting may result in accident, injury or damage. If you have any query, contact Consumer Care in your country.

### Screw length/diameter

Depending on the type of wall mounting this product, make sure that you use screws of a suitable length and diameter:



See the illustration in the quick start guide on how to wall mount this product.

- 1) Drill two holes on the wall.
- 2) Secure the dowels and screws in the holes.
- 3) Hang this product on the fastening screws.

# 7 Product specifications

## Note

- Specifications and design are subject to change without notice.

## Amplifier

- Total output power: 150W RMS (+/- 0.5 dB, 10% THD)
- Frequency response: 20 Hz-20 kHz / +/- 3 dB
- Signal-to-noise ratio: > 65 dB (CCIR) / (A-weighted)
- Input sensitivity:
  - AUX: 2 V
  - AUDIO IN: 1 V

## Audio

- S/PDIF Digital audio input:
  - Coaxial: IEC 60958-3
  - Optical: TOSLINK

## USB

- Compatibility: Hi-Speed USB (2.0)
- Class support: USB Mass Storage Class (MSC)
- File system: FAT16, FAT32, NTFS
- Supports MP3 file formats

## Bluetooth

- Bluetooth profiles: A2DP, AVRCP
- Bluetooth version: 4.0 + EDR

## Main unit

- **Power supply:**
  - Model (Philips branded AC power adapter): TNUA3202003
  - Input: 100-240V~, 50/60 Hz 1.65 A
  - Output: 32V  $\overline{=}$ , 2.0 A
- Standby power consumption:  $\leq$  0.5 W
- Dimensions (W x H x D): 950 x 51 x 69 mm
- Weight: 1.6 kg
- **Built-in speakers:**
  - Drivers: 3 x full range (90mm/3.5" x 34mm/1.3")
  - Impedance: 4 ohm
- Operating temperature and humidity: 0°C to 45°C, 5% to 90% humidity for all climates
- Storage temperature and humidity: -40°C to 70°C, 5% to 95%

## Subwoofer

- Impedance: 2 ohm
- Speaker driver: 1 x 134 mm (5.25") woofer
- Dimensions (W x H x D): 165 x 240 x 296 mm
- Weight: 2.8 kg

## Remote control batteries

- 1 x AAA-R03-1.5 V

# 8 Troubleshooting



## Warning

- Risk of electric shock. Never remove the casing of the product.

To keep the warranty valid, never try to repair the product yourself.

If you have problems using this product, check the following points before you request service. If you still have a problem, get support at [www.philips.com/support](http://www.philips.com/support).

---

## Main unit

### The buttons on this product do not work.

- Disconnect this product from the power supply for a few minutes, then reconnect.

---

## Sound

### No sound from the speakers of this product.

- Connect the audio cable from this product to your TV or other devices.
- Make sure that you connect the audio input on this product to the audio output on your TV or other devices.
- Reset this product to its factory settings.
- On the remote control, select the correct audio input.
- Make sure that this product is not muted.

### Distorted sound or echo.

- If you play audio from the TV through this product, make sure that the TV is muted.

### Audio and video are not synchronized.

- Press **AUDIO SYNC +/-** to synchronize the audio with the video.

### Error message is displayed on the display panel.

- When "ERROR" is displayed, it indicates that an input audio format is not supported.

- When "ARC" blinks, it indicates that the connected TV is not HDMI ARC compliant or an unsupported audio format is detected.

---

## Bluetooth

### A device cannot connect with this product.

- The device does not support the compatible profiles required for this product.
- You have not enabled the Bluetooth function of the device. See the user manual of the device on how to enable the function.
- The device is not correctly connected. Connect the device correctly (see 'Play audio through Bluetooth' on page 9).
- This product is already connected with another Bluetooth device. Disconnect the connected device, then try again.

### Quality of audio play from a connected Bluetooth device is poor.

- The Bluetooth reception is poor. Move the device closer to this product, or remove any obstacle between the device and this product.

### The connected Bluetooth device connects and disconnects constantly.

- The Bluetooth reception is poor. Move the device closer to this product, or remove any obstacle between the device and this product.
- Turn off Wi-Fi function on the Bluetooth device to avoid interference.
- For some Bluetooth, the Bluetooth connection can be deactivated automatically to save power. This does not indicate any malfunction of this product.





Manufactured under license from Dolby Laboratories. Dolby, Pro Logic, and the double-D symbol are trademarks of Dolby Laboratories.



The terms HDMI and HDMI High-Definition Multimedia Interface, and the HDMI Logo are trademarks or registered trademarks of HDMI Licensing LLC in the United States and other countries.



The Bluetooth® word mark and logos are registered trademarks owned by Bluetooth SIG, Inc. and any use of such marks by Gibson Innovations Limited is under license. Other trademarks and trade names are those of their respective owners.

产品中有害物质的名称及含量  
Names and Contents of Hazardous Substances

部件名称 Name of the parts	有害物质 Hazardous Substance					
	铅 (Pb)	汞 (Hg)	镉 (Cd)	六价铬 (Cr (VI))	多溴联苯 (PBB)	多溴二苯醚 (PBDE)
Housing 外壳	○	○	○	○	○	○
Subwoofer 超重低音箱	×	○	○	○	○	○
Loudspeakers 喇叭单元	○	○	○	○	○	○
PWBs 电路板组件	×	○	○	○	○	○
Accessories (Remote control & cables) 附件 (遥控器, 电源线, 连接线)	×	○	○	○	○	○
Batteries in Remote Control (ZnC) 遥控器电池	×	○	○	○	○	○

本表格依据 SJ/T 11364 的规定编制。

The table is formulated according to SJ/T 11364.

- ：表示该有害物质在该部件所有均质材料中的含量均在 GB/T 26572 规定的限量要求以下。  
○：Indicates that this hazardous substance contained in all of the homogeneous materials for this part is below the limit requirement in GB/T 26572.
- ×：表示该有害物质至少在该部件的某一均质材料中的含量超出 GB/T 26572 规定的限量要求。  
×：Indicates that this hazardous substance contained in at least one of the homogeneous materials used for this part is above the limit requirement in GB/T 26572.



**环保使用期限 Environmental Protection Use Period**

此标识指期限（十年），电子电气产品中的有害物质在正常使用的条件下不会发生外泄或突变，用户使用该电子电气产品不会对环境造成严重污染或对其人身、财产造成严重损害的期限。

This logo refers to the period (10 years) during which the hazardous substances in electronic and electrical products will not leak or mutate so that the use of these [substances] will not result in any severe environmental pollution, any bodily injury or damage to any assets.





Specifications are subject to change without notice

2016 © Gibson Innovations Limited. All rights reserved.

This product has been manufactured by, and is sold under the responsibility of Gibson Innovations Ltd., and Gibson Innovations Ltd. is the warrantor in relation to this product. Philips and the Philips Shield Emblem are registered trademarks of Koninklijke Philips N.V. and are used under license.

HTL2183B\_93\_UM\_V2.0

