



Hairdryer

- 2200W
- ThermoProtect setting
- with massaging volume diffuser
- Ionic Care

HP8233/03

Fast dry at a lower temperature with ThermoProtect

with massaging diffuser & 11mm styling nozzle.

Protect your hair while enjoying fast drying results. This hair dryer has multiple speed and temperature settings. Features include ThermoProtect for fast drying at a constant caring temperature, Ionic Care & TurboBoost.

Benefits

Beautifully styled hair

- Professional 2200W for perfect salon results
- Six flexible speed and temperature settings for full control
- Ultra slim styling nozzle of 11mm for precision styling
- Turbo boost for extra fast drying
- Maximizes volume & boosts curls while gently massaging scalp
- Cool Shot sets your style

Less Hair Damage

- ThermoProtect temperature setting

- Ionic conditioning for shiny, frizz-free hair
- More Care with ceramic elements, providing far infrared heat

Easy to use

- Elegant, feminine design emphasising performance and quality
- 1.8 m power cord
- Easy storage hook for convenient storage
- Removeable air flow filter makes cleaning quick and easy

PHILIPS

ThermoProtect Ionic

Features

Premium Design



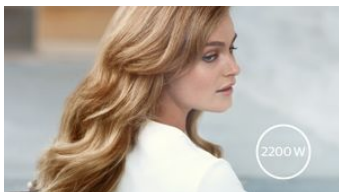
This hairdryer embodies a modern, sophisticated approach to design. Soft, fluid contours and elongated proportions subtly communicate femininity while precision detailing and high quality materials and finishes are evidence of the product's superior performance.

ThermoProtect temperature



The ThermoProtect temperature provides the optimal drying temperature and gives additional protection from overheating the hair. With the same powerful airflow, you will get the best results in a caring way.

Professional 2200W



This 2200W professional hairdryer creates a powerful airflow. The resulting combination of power and speed makes drying and styling your hair quicker and easier.

Ionic conditioning



Give your hair instant care with ionic conditioning. Charged negative ions eliminate static, condition your hair, and smooth the hair cuticles to intensify hair's shine and glossiness. The result is smooth and frizz-free hair with beautiful shine.

Speed and temperature settings



The speed and heat required can be easily adjusted to create the perfect style. Six different settings ensure full control for precise and tailored styling.

Ultra slim styling 11mm nozzle



The ultra thin styling nozzle concentrates the flow of hair through the 11mm nozzle for precision styling on specific areas. Great for touch ups or to set your style.

Turbo boost



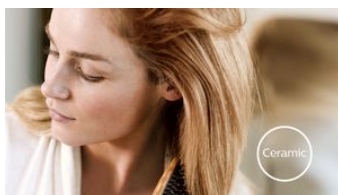
The turbo boost button increases the airflow, to dry your hair even quicker.

Asymmetric massaging diffuser



The asymmetric massaging diffuser has a unique asymmetric design that is contoured to the head, making it easier and more intuitive to use. The diffuser spreads the flow of air across the hair, drying hair more healthy, boosting volume and reducing frizz while the addition of massage helps stimulate the scalp and improve hair vitality. For best results, hold close to the crown and root area and let the diffuser's massaging textured pins encourage volume, add bounce and shape curls.

More care with Ceramic element



The ceramic element issues far infrared heat, which has a gentle warmth that helps dry your hair from within and protects it from overdrying, without compromising on speed and effectiveness.

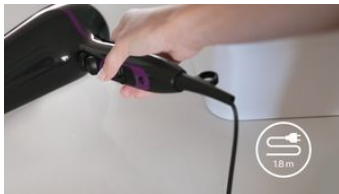
Cool Shot



A must-have professional function for hair stylists. The Cool Shot button provides an intense burst of cold air. It is used after styling to finish and set the style.

ThermoProtect Ionic

1.8 m cord



Convenient to use thanks to the 1.8m power cord length.

Easy storage hook



The rubberised hook is located at the base of the handle and provides another storage option, particularly convenient for use in the home or when staying at a hotel.

Removeable air inlet filter



The removeable air flow filter of your hairdryer is easy to maintain. Simply click off to clean. Doing this regularly will prevent build up of dust and hair that can affect drying performance.

Specifications

[field not found 'disclaimer_text']

Technical specifications

Voltage	220-240 V
Frequency	50-60 Hz
Wattage	2200 W
Power	2200 W
Color/finishing	Glossy Black & Purple gradient
Housing material	PC
Motor	DC Motor
Cord length	1.8 m

Features

Foldable handle	No
Cool shot	Yes
Dual voltage	No
Travel pouch	No
Ceramic coating	Ceramic Element
Ion conditioning	Yes
Hanging loop	Yes
Diffuser	Massaging volume diffuser
Nozzle / Concentrator	Ultra slim styling 11mm nozzle
Number of attachments	2
Turbo Boost	Yes

Service

2-year guarantee	Yes
------------------	-----

Weight & dimensions

A-Box Dimensions	Length = 63cm Width = 35cm Height = 25cm
A-Box Weight	6.3kg

F-Box Dimensions	Depth = 11cm Height = 23cm Width = 31cm
F-Box weight	1kg
Product size	Width = 22cm Height = 31cm Length = 10cm
Product weight (excl. pack)	0.6kg

Packaging dimensions

Height	23.00 cm
Width	31.00 cm
Depth	11.00 cm
Nett weight	0.72 kg
Gross weight	0.95 kg
EAN	08710103619642
Number of products included	1
Country of origin	CN
Harmonised Systems Code	851631

Outer Carton

Length	63.20 cm
Width	35.00 cm
Height	24.77 cm
Gross weight	6.33 kg
EAN	18710103619649
Number of consumer packagings	6



data subject to change
2018, October 12

Version: 2.0.1
EAN: 08710103619642

© 2018 Koninklijke Philips N.V.
All rights reserved.

Specifications are subject to change without notice. Trademarks are the property of Koninklijke Philips N.V. or their respective owners.

www.philips.com