

Always there to help you

Register your product and get support at
www.philips.com/support

BM50



User manual

PHILIPS

Contents

1 Important	2
Safety	2

2 Your micro system	3
Introduction	3
What's in the box	3
Overview of the main unit	4
Overview of the remote control	5

3 Get started	7
Place the device	7
Connect FM antenna	7
Connect power	7
Prepare the remote control	8
Set clock	8
Turn on	8

4 Play	9
Play in single mode	9
Play in group mode	13

5 Adjust sound	16
Select a preset sound effect	16
Adjust volume level	16
Mute sound	16

6 Other features	17
Set the alarm timer	17
Set the sleep timer	17
Listen from an external device	17
Listen through a headphone	18
Update firmware	18

7 Product information	19
Specifications	19
USB playability information	20
Supported MP3 disc formats	20
RDS program types	20

8 Troubleshooting	21
--------------------------	----

9 Notice	23
Declaration of conformity	23
Written offer	24

1 Important

Safety

- Make sure that there is enough free space around the product for ventilation.
- Only use attachments or accessories specified by the manufacturer.
- Battery usage CAUTION – To prevent battery leakage which may result in bodily injury, property damage, or damage to the product:
 - Install the battery correctly, + and - as marked on the product.
 - Remove the battery when the product is not used for a long time.
 - The battery shall not be exposed to excessive heat such as sunshine, fire or the like.
- The product shall not be exposed to dripping or splashing.
- Do not place any sources of danger on the product (e.g. liquid filled objects, lighted candles).
- Where the plug of the Direct Plug-in Adapter is used as the disconnect device, the disconnect device shall remain readily operable.

 Use only power supplies listed in the user manual.



Warning

- Never remove the casing of this device.
- Never lubricate any part of this device.
- Never place this device on other electrical equipment.
- Keep this device away from direct sunlight, naked flames or heat.
- Never look into the laser beam inside this device.
- Ensure that you always have easy access to the power cord, plug, or adaptor to disconnect this device from the power.

Hearing safety



Caution

- To avoid hearing damage, limit the time you use the headphones at high volume and set the volume to a safe level. The louder the volume, the shorter is the safe listening time.

Be sure to observe the following guidelines when using your headphones.

- Listen at reasonable volumes for reasonable periods of time.
- Be careful not to adjust the volume as your hearing adapts.
- Do not turn up the volume so high that you can't hear what's around you.
- You should use caution or temporarily discontinue use in potentially hazardous situations.
- Excessive sound pressure from earphones and headphones can cause hearing loss.

2 Your micro system

Congratulations on your purchase, and welcome to Philips! To fully benefit from the support that Philips offers, register your product at www.philips.com/welcome.

Introduction

With this unit, you can:

- enjoy audio from discs, Bluetooth-enabled devices, USB storage devices, or other external devices;
- listen to music everywhere in your home through a group of izzylink-compatible multiroom speakers (not supplied);
- listen to FM radio stations.

You can select one of the following sound effects:

- Balanced, Warm, Bright, Clear, and Powerful

The unit supports these media formats:

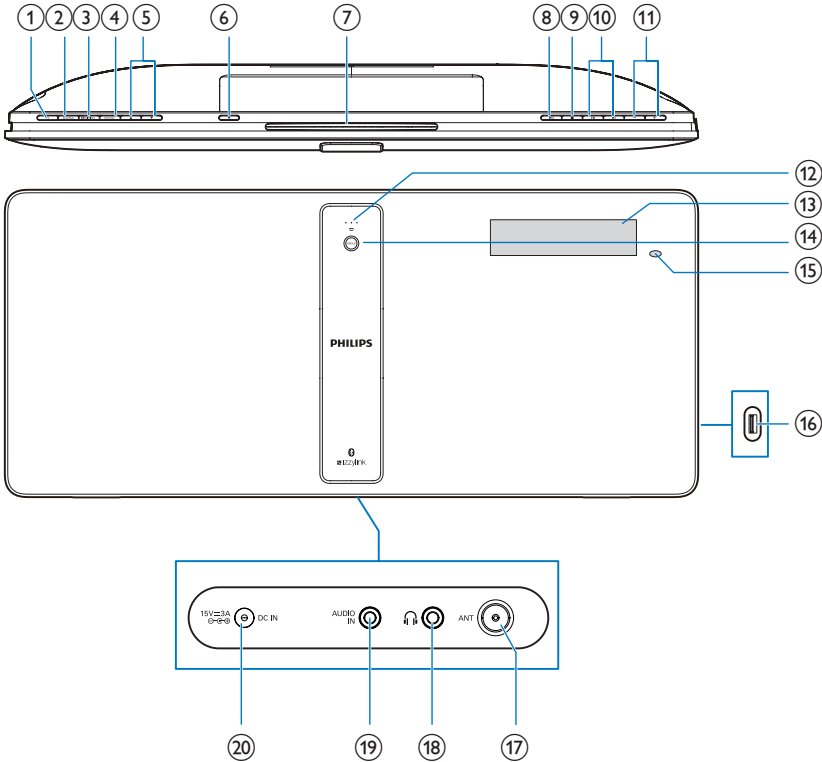


What's in the box

Check and identify the contents of your package:

- Main unit
- 1 x FM wire antenna
- Remote control (with one AAA battery)
- Short User Manual
- Safety sheet
- Table stand with screws
- Wall mounting sheet
- Wall mounting bracket and screws

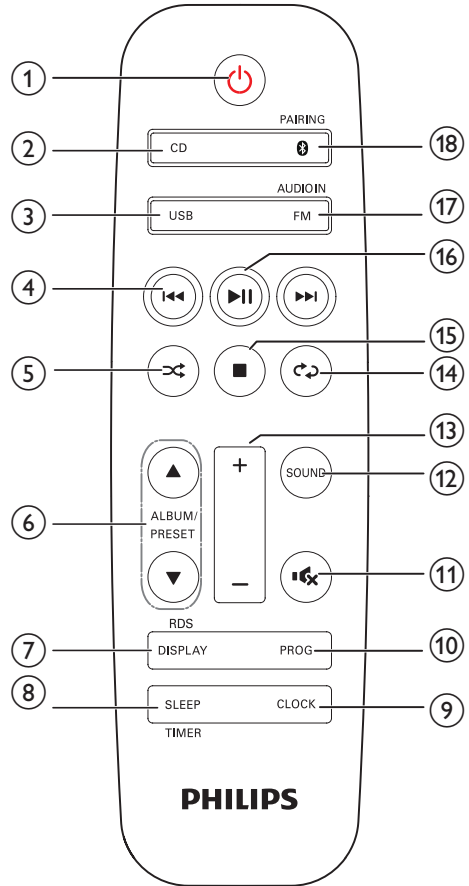
Overview of the main unit



- ① **⏻**
 - Turn the unit on or off.
 - Switch to standby mode or ECO mode.
- ② **SOURCE**
 - Press to select a source: DISC, USB, TUNER, BT, AUDIO IN.
- ③ **PAIRING**
 - In Bluetooth mode, press and hold for 3 seconds to enter pairing mode.
- ④ **SET/OK**
 - Confirm the selection.
- ⑤ **▲ / ▼**
 - Select a preset radio station.
 - Skip to the previous/next album.
- ⑥ **▲**
 - Open/close the disc compartment.
- ⑦ **Disc compartment**
- ⑧ **▶▶**
 - Start, pause, or resume playback.
- ⑨ **■**
 - Stop playback or erase a program.
- ⑩ **◀ / ▶**
 - Skip to the previous or next title, chapter, track, or file.
- ⑪ **+/-**
 - Adjust the volume.
- ⑫ **Signal strength indicator**
 - Indicates the signal strength of group connection.

- ⑬ **Display panel**
- ⑭ **GROUP button/indicator**
 - Press and hold to group with another izzylink-compatible multiroom speaker.
 - Press to exit or return to a group.
 - Flashes green during grouping.
 - Turns solid white after successful grouping (for the master).
 - Turns solid green after successful grouping (for the slaves).
 - Flashes green when the unit acts as a slave and is looking for the master.
- ⑮ **IR sensor**
 - The sensor that receives infrared signals from the remote control.
- ⑯ **←**
 - USB socket.
- ⑰ **FM ANT**
 - FM antenna socket.
- ⑱ **🎧**
 - Headphone socket.
- ⑲ **AUDIO IN**
 - Audio input socket(3.5mm) for an external audio device.
- ⑳ **DC IN**
 - Power socket.

Overview of the remote control



- ① **⏻**
 - Turn the unit on or off.
 - Switch to standby mode or ECO mode.
- ② **CD**
 - Select the DISC source.
- ③ **USB**
 - Press to select the USB source.

④ 

- Skip to the previous/next track.
- Search within a track/disc/USB.
- Tune to a radio station.
- Adjust time.

⑤ 

- Play tracks randomly.

⑥ **ALBUM/PRESET ▲ / ▼**

- Select a preset radio station.
- Skip to the previous/next album.

⑦ **DISPLAY/RDS**

- Adjust display brightness.
- During playback, display the play information.
- For selected FM radio stations, display RDS information(if available).

⑧ **SLEEP/TIMER**

- Set sleep timer.
- Set alarm timer.

⑨ **CLOCK**

- Set the clock.
- View clock information.

⑩ **PROG**

- Program tracks.
- Program radio stations.

⑪ 

- Mute or restore volume.

⑫ **SOUND**

- Select a preset sound effect.

⑬ **+/-**

- Adjust volume.

⑭ 

- Play a track or all tracks repeatedly.

⑮ 

- Stop playback or erase a program.

⑯ 

- Start, pause, or resume playback.

⑰ **FM/AUDIO IN**

- Press to select either FM or AUDIO IN source.

⑱  **PAIRING**

- Press to select the BT (Bluetooth) source.
- In Bluetooth mode with two devices connected, press and hold for 3 seconds to disconnect the first connected device and enter pairing mode.
- In Bluetooth mode with one device connected, press and hold for 3 seconds to enter pairing mode

3 Get started

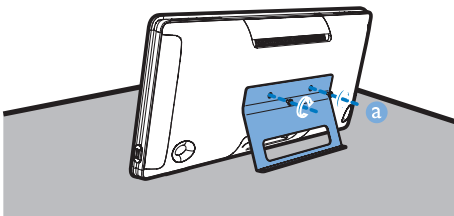
! Caution

- Use of controls or adjustments or performance of procedures other than herein may result in hazardous laser exposure or other unsafe operation.

Always follow the instructions in this chapter in sequence.

If you contact Philips, you will be asked for the model and serial number of this apparatus. The model number and serial number are on the back of the apparatus. Write the numbers here:
Model No. _____
Serial No. _____

Place the device



* Tip

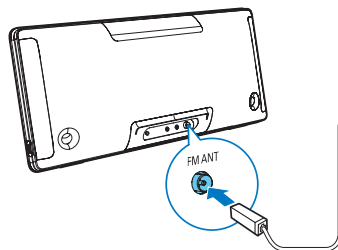
- See the attached wall mounting sheet for how to mount the speaker onto wall.

Connect FM antenna

* Tip

- For optimal reception, fully extend and adjust the position of the antenna.
- For better FM stereo reception, connect an outdoor FM antenna to the **FM ANT** socket.

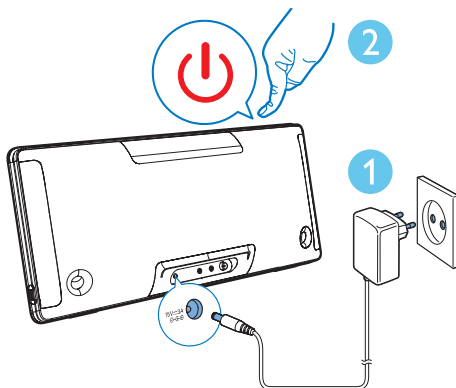
- Connect the supplied antenna to this device before listening to the radio.



Connect power

! Caution

- Risk of product damage! Make sure that the power supply voltage matches the voltage printed on the back of the main unit.
- Risk of electric shock! Before you plug the AC power adaptor, make sure that the adaptor plug converter is fixed securely. When you unplug the AC power adaptor, always pull the plug, never the cord.
- Before you connect the AC power adaptor, make sure that you have completed all the other connections.



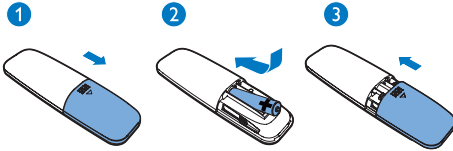
Prepare the remote control

! Caution

- Risk of product damage! When the remote control is not used for long periods, remove the batteries.

To insert the remote control battery:

- 1 Open the battery compartment.
- 2 Insert the supplied AAA battery with correct polarity (+/-) as indicated.
- 3 Close the battery compartment.



Set clock

- 1 In standby mode, press and hold **CLOCK** on the remote control for 3 seconds.
↳ The [24H] or [12H] hour format is displayed.
- 2 Press **◀▶** (or +/-) to select the [24H] or [12H] hour format.
- 3 Press **CLOCK** to confirm.
↳ The hour digits are displayed and begin to blink.
- 4 Press **◀▶** (or +/-) to select hour and press **CLOCK** to confirm.
↳ The minute digits are displayed and begin to blink.
- 5 Press **◀▶** (or +/-) to select minute and press **CLOCK** to confirm.
↳ 'SYNC OFF' is displayed.

- 6 Press **◀▶** (or +/-) to select 'SYNC ON' or 'SYNC OFF' and press **CLOCK** to confirm.
↳ If you have selected 'SYNC ON', automatic clock synchronization starts when you listen to an RDS station that transmits time signals.

* Tip

- You can press **CLOCK** to view clock information when the unit is switched on.

Turn on

- Press **⏻**.
↳ The unit switches to the last selected source.
↳ The signal strength indicators flash for several seconds until the unit boots up.

Switch to standby mode

- Press **⏻** again to switch the unit to standby mode.
↳ The clock (if set) is displayed on the panel.

Switch to ECO mode:

- Press and hold **⏻** for more than 3 seconds.
↳ The display panel is dimmed.

≡ Note

- In single mode, the unit switches to ECO mode after 15 minutes in standby mode.
- In group mode, the unit does not go to ECO mode automatically.

To switch between standby mode and ECO mode:

- Press and hold **⏻** for more than 3 seconds.

4 Play

Play in single mode

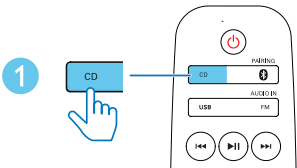
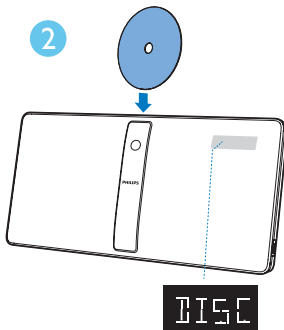
Single mode: Single mode means that the speaker is not grouped with any other izzylink-compatible multiroom speakers. Instead, it is used as a standalone speaker.

Play from disc

Note

- Make sure that the disc contains playable audio content.


- 1 Press **CD** to select the **DISC** source.
- 2 Insert a disc into the disc compartment with the printed side facing you.
↳ Playback will start automatically, if not, press **▶||**.

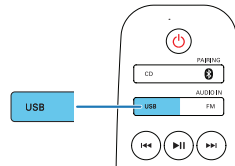
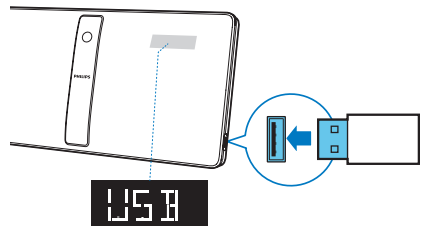


Play from USB

Note

- Make sure that the USB device contains playable audio content (see 'Product information' on page 19).

- 1 Press **USB** to select the **USB** source.
- 2 Insert a USB device into the  socket.
↳ Playback will start automatically, if not, press **▶||**.



Control playback

- ▲ / ▼ Select a folder.
 - ⏮ / ⏭ Press to skip to the previous or next track.
 - ▶▶ Press and hold to search backward/forward within a track.
 - ▶|| Pause or resume playback.
 - Stop playback.
 - ↺ Play a track or all tracks repeatedly.
 - ⤵ Play tracks randomly(Not applicable for the programmed tracks).
-

Skip to a track

For CD:

Press ⏮ / ▶▶ to select another track.

For MP3 disc and USB:

- 1 Press **ALBUM/PRESET** ▲ / ▼ to select an album or a folder.
- 2 Press ⏮ / ▶▶ to select a track or a file.

Program tracks

You can program a maximum of 20 tracks.

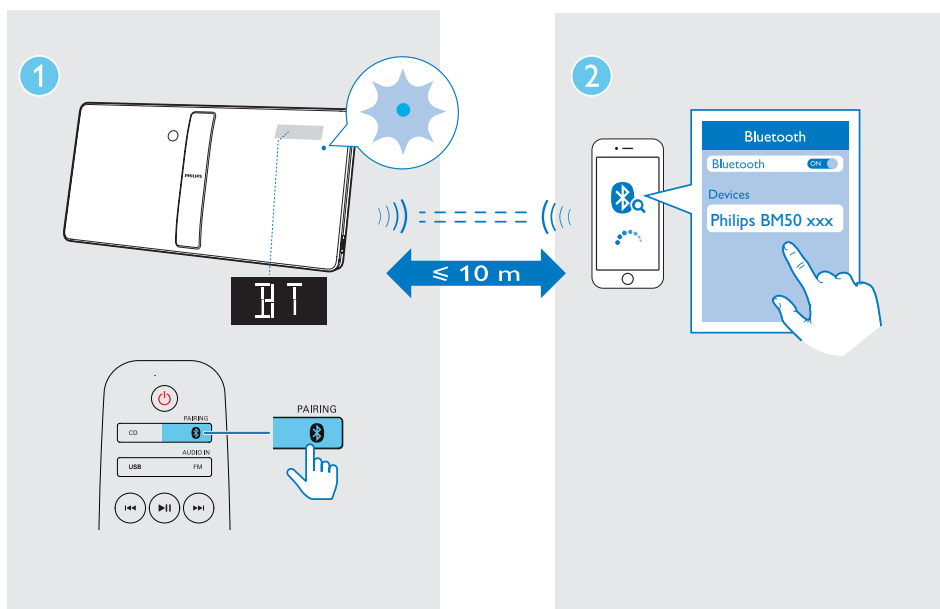
- 1 Stop playback, and then press **PROG** to activate programming mode.
- 2 For MP3 tracks, press **ALBUM/PRESET** ▲ / ▼ to select an album.
- 3 Press ⏮ / ▶▶ to select a track, and then press **PROG** to confirm.
- 4 Repeat steps 2-3 to program more tracks.
- 5 Press ▶|| to play the programmed tracks.
 - To erase the program, stop playback, and then press ■.

Play from Bluetooth-enabled devices

Note

- Before pairing a device with this unit, read its user manual for Bluetooth compatibility.
- Compatibility with all Bluetooth devices is not guaranteed.
- Any obstacle between the unit and the device can reduce the operation range.
- The effective operation range between this unit and your Bluetooth enabled device is approximately 10 meters (30 feet).
- The unit can memorize up to 2 previously connected Bluetooth devices.

To enjoy music through the speaker wirelessly, you need to pair your Bluetooth enabled device with the unit.



- 1 Press **Ⓚ** /PAIRING to select the **Bluetooth** source.
 - ↳ **[BT]** (Bluetooth) is displayed.
 - ↳ The Bluetooth indicator flashes blue.
- 2 On your device that supports Advanced Audio Distribution Profile (A2DP), enable Bluetooth and search for Bluetooth devices that can be paired (refer to the user manual of the device).
- 3 Select '**Philips BM50 xxx**' on your Bluetooth enabled device and if necessary input '0000' as the pairing password.
 - ↳ After successful pairing and connection, the Bluetooth indicator turns solid blue, and the unit beeps.
 - ↳ 'BT' is displayed.

- 4 Play music on the connected device.
 - ↳ Music streams from your Bluetooth enabled device to this unit.
 - If you fail to search for '**Philips BM50 xxx**' or cannot pair with this unit, press and hold **Ⓚ** /PAIRING for three seconds until you hear a beep sound to enter pairing mode.

To disconnect the current Bluetooth-enabled device:

- Deactivate Bluetooth on your device.

Listen to the radio

Tip

- Position the antenna as far as possible from TV or other radiation sources.
- Make sure that you have connected the supplied FM antenna.
- For optimal reception, fully extend and adjust the position of the antenna.

Tune to a radio station

- 1 Press **FM/AUDIO IN** repeatedly to select the tuner source.
 - 2 Press and hold **◀◀ / ▶▶** for 3 seconds.
↳ The radio tunes to a station with strong reception automatically.
 - 3 Repeat step 2 to tune additional stations.
- To fine tune a weak station:**
- Press **◀◀ / ▶▶** repeatedly until you find optimal reception.

Store FM radio stations automatically

Note

- You can store a maximum of 30 preset radio stations (FM).

- 1 In tuner mode, press **PROG** for more than two seconds to activate automatic programming.
↳ **[AUTO]** is displayed.
↳ All available stations are programmed in the order of waveband reception strength.
↳ The first programmed radio station is broadcast automatically.
- 2 press **▲ / ▼** to select a preset station.

Store FM radio stations manually

- 1 Tune to an FM radio station.
- 2 Press **PROG** to activate programming mode.
↳ **[PROG]** (program) blinks.

- 3 Press **ALBUM/PRESET ▲ / ▼** repeatedly to select a radio frequency.
- 4 Press **PROG** again to confirm.
↳ The frequency of the preset station is displayed.
- 5 Repeat the above steps to store more FM stations.

Note

- To remove a pre-stored station, store another station in its place.

Select a preset radio station

- In FM mode, press **▲ / ▼** to select a preset radio station.

Show RDS information

RDS (Radio Data System) is a service that allows FM stations to show additional information.

- 1 Tune to an RDS station.
- 2 Press **DISPLAY/RDS** repeatedly to scroll through the following information (if available):
↳ Program service
↳ Program type such as **[NEWS]** (news), **[SPORT]** (sport), **[POP M]** (pop music)...
↳ Radio text message
↳ Time

Select stereo/mono broadcast

Note

- Stereo broadcast is the default setting for tuner mode.
 - For stations with weak signals: to improve the reception, change to monaural sound.
- In FM tuner mode, press **▶▶** to switch between mono and stereo broadcast.
↳ **[STEREO]** (Stereo) is displayed when the radio station is stereo broadcast.

Play in group mode

Group mode: If you have more than one izzylink-compatible multiroom speakers, you can create a group and stream music to the group of speakers at the same time. To use this feature, you need to purchase more than one izzylink-compatible multiroom speakers.

Note

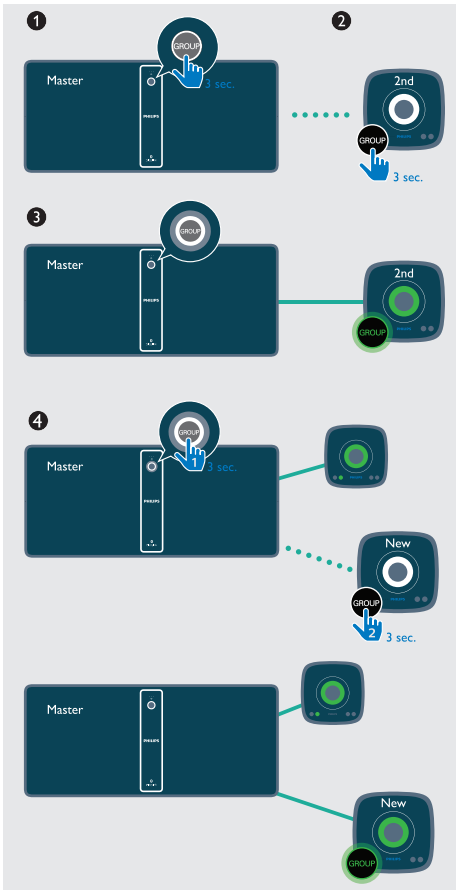
- You can create a group of up to five speakers, with one as the master and four as slaves.

Note

- Whenever you create a group, the first speaker that you enable the group function will act as the master.

- 1 Hold **GROUP** on the first speaker for 3 seconds (The master).
- 2 Hold **GROUP** on a second speaker for 3 seconds (The slave).
- 3 Wait for 15 to 30 seconds for connection setup.
- 4 Repeat steps 1 to 3 to add more slave speakers one by one.

Create a group



Note

- You can only add slave speakers one by one. Each time when you add a slave speaker; first press and hold **GROUP** on the master speaker until the indicator on the button flashes and the speaker beeps.
- If the signal strength indicator on a slave speaker shows that the signal is poor; move it closer to the master speaker.

You can add any of the following speakers into the existing group or create a new group with them:

- A speaker with factory default settings
- A master speaker that has no slave connected to it
- A slave speaker that is disconnected from its master (with the **GROUP** indicator flashing)

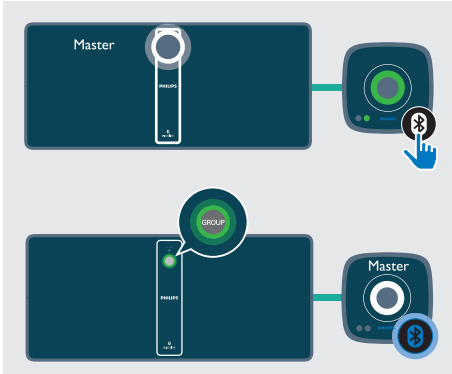
Play from the master to the whole group

Note

- In Bluetooth mode, music playback pauses when there is an incoming call or video recording is in progress on the connected mobile phone.
- If this speaker (BM150) acts as the master; select a source and play to the whole group of speakers.

Change master

You can change the current master in a group easily. For example, in Bluetooth mode, when your mobile phone loses connection with the current master speaker, you can set the closest slave speaker as the master:

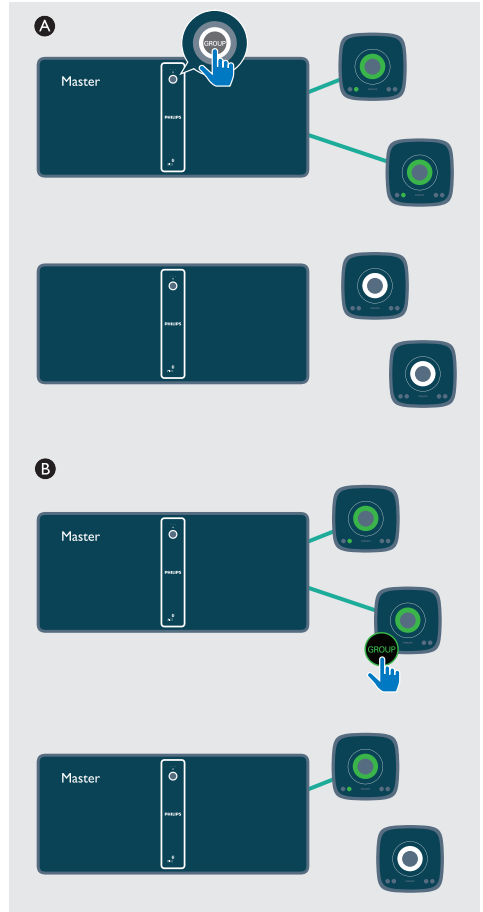


- Press any source key on a slave speaker to change it to be the master of the group.

Note

- Pair your mobile device with the new master if you have not paired with it before.

Switch to single mode



- Ⓐ Press **GROUP** on the master to enter single mode.
 - ↳ The slaves keep looking for the master until timeout in 15 minutes.
 - ↳ You can create a new group with the slaves or press **GROUP** on a slave to enter single mode.
- Press **GROUP** on the master again to resume group mode.
- Ⓑ Press **GROUP** on a slave to switch to single mode. Press **GROUP** again to rejoin.

Reset group status

- In case of any grouping issues, hold **GROUP** for 8 seconds to reset.

5 Adjust sound

The following operations are applicable to all supported media.

Select a preset sound effect

- Press **SOUND** repeatedly to select a preset sound effect.
 - **Balanced**(Balanced), **Warm**(Warm), **Bright**(Bright), **Clear**(Clear), and **Powerful**(Powerful).

Adjust volume level

- On the remote control, press **+/-** repeatedly.
- On the main unit, press **VOL+/VOL-** repeatedly.

Mute sound

- Press **MUTE** to mute or restore the sound.

6 Other features

Set the alarm timer

This unit can be used as an alarm clock. You can select **DISC**, **USB**, or **TUNER** as the alarm source.

Note

- Make sure that you have set the clock correctly.

- 1 In standby mode, press and hold **SLEEP/TIMER** for 3 seconds.
- 2 Press **◀▶** repeatedly to select an alarm source (**DISC**, **USB**, or **TUNER**)
- 3 Press **SLEEP/TIMER** to confirm.
↳ The hour digits begin to blink.
- 4 Repeat steps 2-3 to set the hour, minute, and adjust volume of the alarm.

Note

- If no button is pressed in 90 seconds, the system exits timer setting mode automatically.

To activate or deactivate the alarm timer:

- Press **SLEEP/TIMER** repeatedly to view the alarm information and activate or deactivate the alarm.
↳ If the timer is activated, **[TIMER]**(Timer) is displayed.
↳ If the timer is deactivated, **[TIMER OFF]** (timer off) is displayed and **[TIMER]**(Timer) disappears.

Tip

- If no **DISC** or **USB** is detected, the system will use **FM** as the default alarm source.

Set the sleep timer

- Press **SLEEP/TIMER** to set the number of minutes before the unit automatically turns off:
 - **[SLP 120]**
 - **[SLP 90]**
 - **[SLP 60]**
 - **[SLP 45]**
 - **[SLP 30]**
 - **[SLP 15]**
 - **[SLP OFF]**

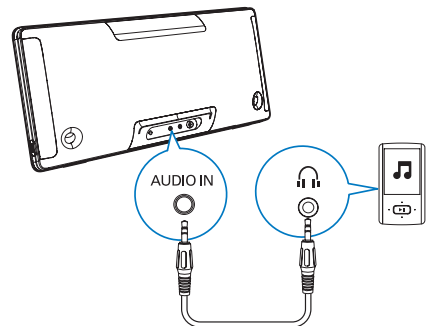
Tip

- Sleep timer can only be set when the unit is 'On'.


Listen from an external device

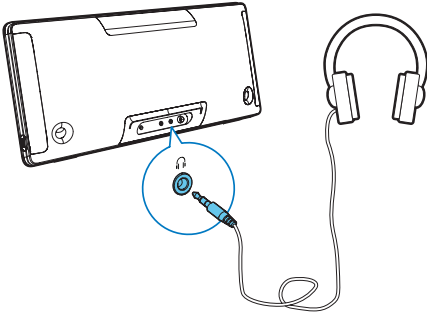
You can listen to an external device through this unit with an audio cable.

- 1 Press **FM/AUDIO IN** repeatedly to select the **AUDIO IN** source.
- 2 Connect an audio cable (not supplied) between:
 - the **AUDIO IN** socket (3.5 mm) on the unit;
 - and the headphone/**LINE OUT** socket on an external device.
- 3 Start to play music on the connected device (see the device user manual).



Listen through a headphone

- Plug a headphone (not supplied) into the  socket.



Update firmware

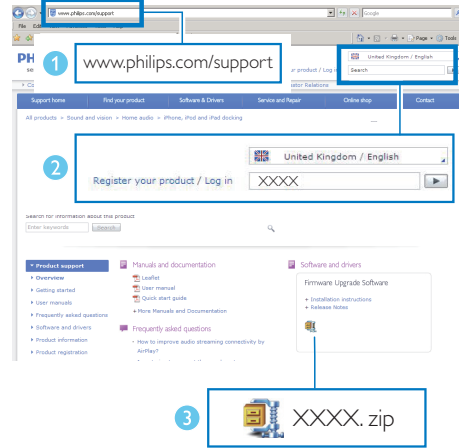
Warning

- Always connect the speaker to AC power for firmware upgrade.
- Never power off the speaker or unplug the USB mass storage device before completion of the firmware upgrade.

Note

- Make sure that the USB stick is FAT16/32 formatted.

- 1 On your PC/Mac, go to www.philips.com/support.
- 2 Enter the model number to find the latest firmware upgrade files available.



- 3 Unzip and save the upgrade files to the root directory of a USB stick.
- 4 Press **USB** to select the **USB** source, then plug the USB stick into the USB socket on the back of the speaker.
- 5 Do not remove the USB stick, and wait for around 3 to 4 minutes for completion of the firmware upgrade.
 - ↳ During firmware upgrade, 'UPGRADE' is shown on the display panel.
 - ↳ At completion of firmware upgrade, 'SUCCESS' is shown on the display panel.
- 6 Disconnect the AC power of the speaker and unplug the USB stick.
- 7 Connect AC power again and turn on the speaker.

Tip

- At completion of upgrade, remember to delete the upgrade files from your USB stick.

7 Product information

Note

- Product information is subject to change without prior notice.

Specifications

Amplifier

Rated Output Power	2 x 20 W RMS
Frequency Response	63 -20KHz, +/-3dB
Total Harmonic Distortion	<1%(1 KHz)
Signal to Noise Ratio (A-weighted)	>72dBA
AUDIO IN	650mV RMS 22kohm

Disc

Laser Type	Semiconductor
Disc Diameter	12 cm
Support Disc	CD-DA, CD-R, CD-RW, MP3-CD
Audio DAC	24 Bits/44.1 kHz
Total Harmonic Distortion	<1% (1 kHz)
Frequency Response	63Hz - 20kHz, ±3dB
S/N Ratio	>72dBA

Bluetooth

Bluetooth version	V2.1 +EDR
Bluetooth frequency band	2.402GHz ~ 2.48GHz ISM Band
Range	10 m (free space)

USB

USB Direct Version	2.0 full speed
--------------------	----------------

Tuner (FM)

Tuning Range	87.5-108 MHz
Tuning grid	50 KHz
Preset stations	30
Sensitivity	
- Mono, 26 dB S/N Ratio	<22 dBf
- Stereo, 46 dB S/N Ratio	<43 dBf
Search Selectivity	<28dBf
Total Harmonic Distortion	<3%
Signal to Noise Ratio	>55dBA

Speakers

Speaker Impedance	6 ohm
Speaker Driver	2.5 inch

General information

AC power	Model: AS600-150-AD300 Input: 100-240V~, 50/60 Hz, 1.5A Output: DC 15.0V, 3A
Power Consumption	Operation mode: < 16 W ECO mode: < 0.5 W
Dimensions	
- Main Unit (W x H x D)	500 x 218 x 112 mm
Weight	
- Main Unit	2.56 kg

USB playability information

- Supported file format: MP3 (*.mp3)
- Supported MP3 bit rate: 32k-320kbps CBR and VBR.
- Supported USB file system: FAT12, FAT16, FAT32 (sector size: 512 bytes)

Supported MP3 disc formats

- ISO9660, Joliet
- Maximum title number: 128 (depending on file name length)
- Maximum album number: 99
- Supported sampling frequencies: 32 kHz, 44.1 kHz, 48 kHz
- Supported Bit-rates: 32~256 (kbps), variable bit rates

RDS program types

NOTYPE	No RDS programme type
NEWS	News services
AFFAIRS	Politics and current affairs
INFO	Special information programs
SPORT	Sports
EDUCATE	Education and advanced training
DRAMA	Radio plays and literature
CULTURE	Culture, religion and society
SCIENCE	Science
VARIED	Entertainment programs
POP M	Pop music
ROCK M	Rock music
MOR M	Light music
LIGHT M	Light classical music
CLASSICS	Classical music
OTHER M	Special music programs
WEATHER	Weather
FINANCE	Finance

CHILDREN	Children's programs
SOCIAL	Social Affairs
RELIGION	Religion
PHONE IN	Phone In
TRAVEL	Travel
LEISURE	Leisure
JAZZ	Jazz Music
COUNTRY	Country Music
NATION M	National Music
OLDIES	Oldies Music
FOLK M	Folk Music
DOCUMENT	Documentary
TES	Alarm Test
ALARM	Alarm

8 Troubleshooting



Warning

- Never remove the casing of this unit.

To keep the warranty valid, never try to repair the unit yourself.

If you encounter problems when using this device, check the following points before requesting service. If the problem remains unsolved, go to the Philips Web page (www.philips.com/support). When you contact Philips, make sure that the device is nearby and the model number and serial number are available.

No power

- Make sure that the AC power cord of the device is connected properly.
- Make sure that there is power at the AC outlet.
- As a power-saving feature, the system switches to standby mode automatically 15 minutes after track playback reaches the end and no control is operated.

No sound or poor sound

- Adjust the volume.

No response from the unit

- Switch to AUDIO IN source, then hold ■ for more than 8 seconds to reset the unit to its default settings.
- Disconnect and reconnect the AC power plug, then turn on the unit again.

Some buttons on the unit do not work or the unit is not working as usual.

- You may have activated demo mode by accident. In this case, unplug the power cable, press and hold ϕ and then plug in the power cable again. Continue to hold the button for 15 seconds until all indicators flash to exit demo mode. If the issue remains, repeat the operation. Then

you can power on and operate the unit as usual.

Remote control does not work

- Before you press any function button, first select the correct source with the remote control instead of the main unit.
- Reduce the distance between the remote control and the unit.
- Insert the battery with its polarities (+/- signs) aligned as indicated.
- Replace the battery.
- Aim the remote control directly at the sensor on the front of the unit.

No disc detected

- Insert a disc.
- Make sure that the disc is inserted with the printed side facing upward.
- Wait until the moisture condensation at the lens has cleared.
- Replace or clean the disc.
- Use a finalized CD or correct format disc.

Cannot display some files in USB device

- The number of folders or files in the USB device has exceeded a certain limit. This phenomenon is not a malfunction.
- The formats of these files are not supported.

USB device not supported

- The USB device is incompatible with the unit. Try another one.

Poor radio reception

- Increase the distance between the unit and your TV or other radiation sources.
- Connect and fully extend the supplied antenna.

Music playback is unavailable on this unit even after successful Bluetooth connection.

- The device cannot be used to play music through this unit wirelessly.

The audio quality is poor after connection with a Bluetooth-enabled device.

- The Bluetooth reception is poor. Move the device closer to this unit or remove any obstacle between them.

Bluetooth cannot be connected with this unit.

- The device does not support the profiles required for this unit.
- The Bluetooth function of the device is not enabled. Refer to the user manual of the device to find out how to enable the function.
- This unit is not in pairing mode.
- This unit is already connected with another Bluetooth-enabled device. Disconnect that device and then try again.

The paired mobile device connects and disconnects constantly.

- The Bluetooth reception is poor. Move the device closer to this unit or remove any obstacle between them.
- Some mobile phones may connect and disconnect constantly when you make or end calls. This does not indicate any malfunction of this unit.
- For some devices, the Bluetooth connection may be deactivated automatically as a power-saving feature. This does not indicate any malfunction of this unit.

Timer does not work

- Set the clock correctly.
- Switch on the timer.

Clock/timer setting erased

- Power has been interrupted or the power cord has been disconnected. Reset the clock/timer.

Group connection failed

- Move slave speakers closer to the master.
- You can only add slave speakers one by one.

- You cannot group more than four speakers with the master.
- The master speaker may have switched to single mode.

Occasional stuttering or breaking of music streaming during group playback

- If you experience music stuttering or breaking of streaming, it could be that your home Wi-Fi network is busy. Even though Izzylink is independent from your home Wi-Fi network, it uses Wi-Fi signals to communicate between the speakers. Try the following : 1) Reduce traffic on your home Wi-Fi network, e.g. stop any large file downloads or other content streaming on your Wi-Fi network; 2) Reboot the Master speaker, by unplugging it from the mains and plugging it in again.

9 Notice

Any changes or modifications made to this device that are not expressly approved by Gibson Innovations may void the user's authority to operate the equipment.

CE | 588

Declaration of conformity

Hereby, Gibson Innovations declares that this product is in compliance with the essential requirements and other relevant provisions of Directive 1999/5/EC. You can find the Declaration of Conformity on www.philips.com/support.

Disposal of your old product and battery



Your product is designed and manufactured with high quality materials and components, which can be recycled and reused.



This symbol on a product means that the product is covered by European Directive 2012/19/EU.



This symbol means that the product contains batteries covered by European Directive 2013/56/EU which cannot be disposed of with normal household waste.

Inform yourself about the local separate collection system for electrical and electronic products and batteries. Follow local rules and never dispose of the product and batteries

with normal household waste. Correct disposal of old products and batteries helps prevent negative consequences for the environment and human health.

Removing the disposable batteries

To remove the disposable batteries, see battery installation section.

Environmental information

All unnecessary packaging has been omitted. We have tried to make the packaging easy to separate into three materials: cardboard (box), polystyrene foam (buffer) and polyethylene (bags, protective foam sheet.)

Your system consists of materials which can be recycled and reused if disassembled by a specialized company. Please observe the local regulations regarding the disposal of packaging materials, exhausted batteries and old equipment.



This item incorporates copy protection technology that is protected by U.S. patents and other intellectual property rights of Rovi Corporation. Reverse engineering and disassembly are prohibited.

Bluetooth

The Bluetooth® word mark and logos are registered trademarks owned by Bluetooth SIG, Inc. and any use of such marks by Gibson Innovations Limited is under license. Other trademarks and trade names are those of their respective owners.

This apparatus includes this label:



 Note

- The type plate is located on the back of the device.

Written offer

Gibson Innovations Limited hereby offers to deliver; upon request, a copy of the corresponding source code for the open source software packages used in this product for which such offer is requested by the respective licenses. This offer is valid up to three years after product purchase. To obtain source code, please contact open.source-gi@gibson.com. If you prefer not to use email or if you do not receive confirmation receipt within a week after mailing to this email address, please write to Open Source Team, Gibson Innovations Limited, 5/F Philips Electronics Building, 5 Science Park East Avenue, Hong Kong Science Park, Shatin, N.T. Hong Kong.



2016 © Gibson Innovations Limited. All rights reserved.

This product has been manufactured by, and is sold under the responsibility of Gibson Innovations Ltd., and Gibson Innovations Ltd. is the warrantor in relation to this product. Philips and the Philips Shield Emblem are registered trademarks of Koninklijke Philips N.V. and are used under license.

BM50_10_UM_V3.0

