



Win7 Smart Tool

Manual



Installation Mode Restriction

File Location \ Mode	UEFI Mode	Legacy Mode
USB Storage Device	✖	✓
ISO File In DVD-ROM	✓	✓

● Support List

OS: Win7 32/64, Win8 32/64, Win8.1 32/64, Win10 32/64

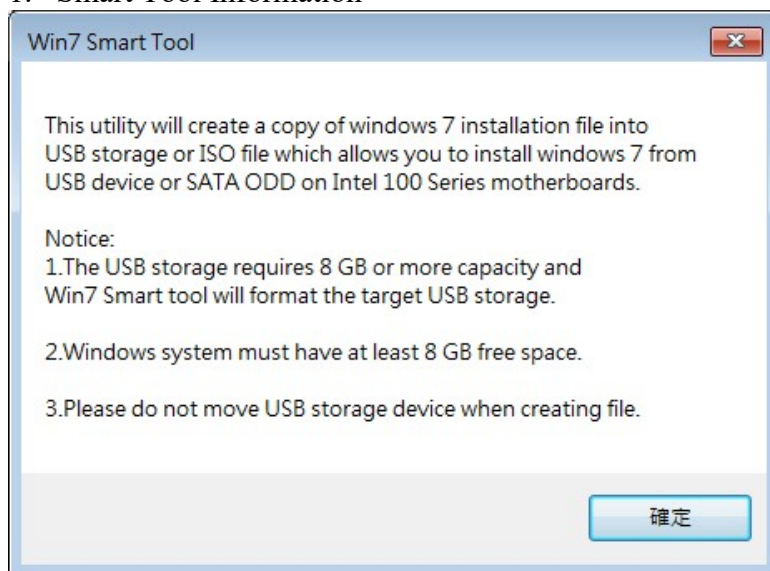
Language: English

System Pre-requisite:

1. The target USB storage device must at least have 8 GB or more capacity.
2. USB device will be formatted.
3. Please do not remove target device or source file when creating the windows 7 installation file.
4. When storage device is a USB pen drive, user cannot install windows 7 with UEFI mode.
5. Please plug in only one USB storage device when using the smart tool.
6. Anti-Virus software needs to be disabled

● Tool Guide

1. Smart Tool Information



2. Main Menu

msi WIN7 SMART TOOL

Step 1 : Choose source folder.

☒ Source folder

☐ Add USB drivers

Step 2 : Choose storage device.

☒ USB storage

☐ ISO destination C:\

Start

Copyright © 2015 Micro-Star INT'L CO., LTD. All rights reserved.

● Create Bootable Win 7 Installation USB Storage Device

Choose either folder or SATA ODD which contains Win7 OS source file.



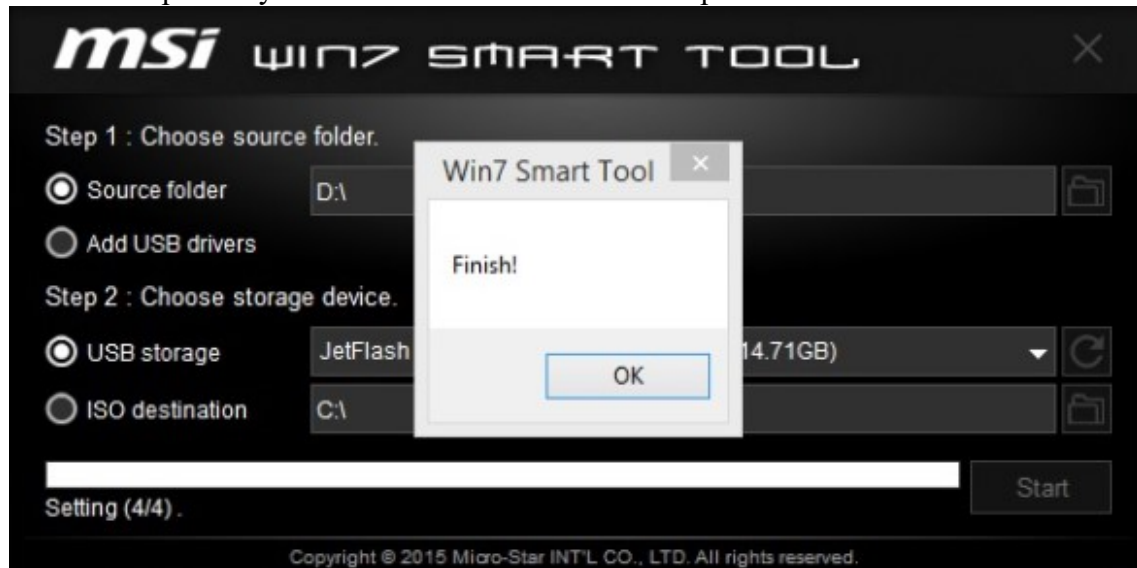
Install the USB storage device, click  to locate the device and select “USB Storage” option in the menu.



Click “Start” to create file.



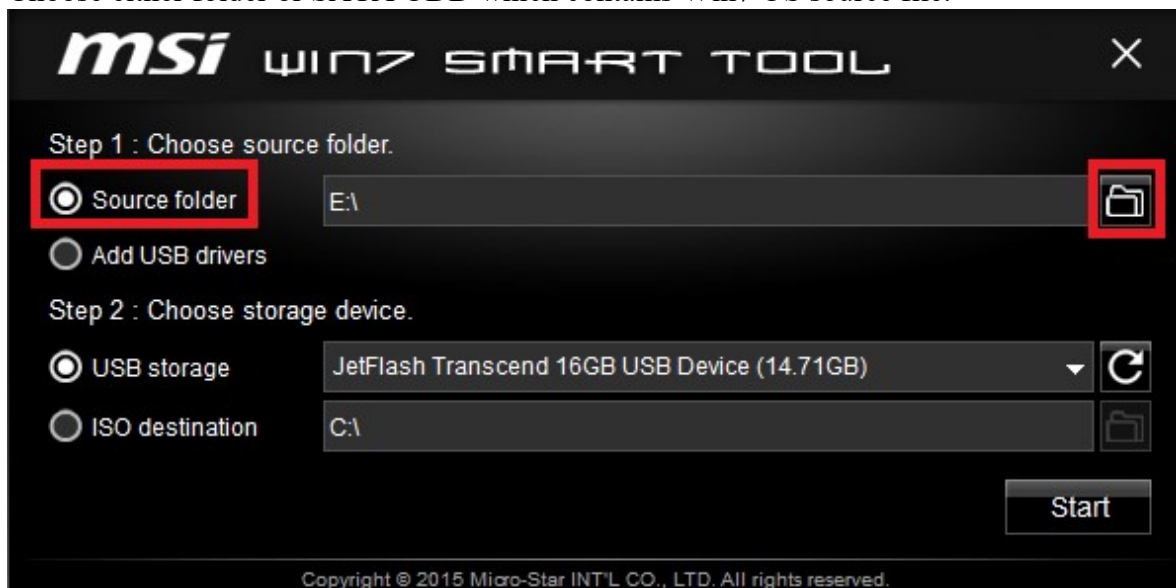
Please wait patiently for 10 to 15 minutes for file completion.



The USB storage device is now ready for Win7 installation.

● Create ISO Win7 Installation File

Choose either folder or SATA ODD which contains Win7 OS source file.



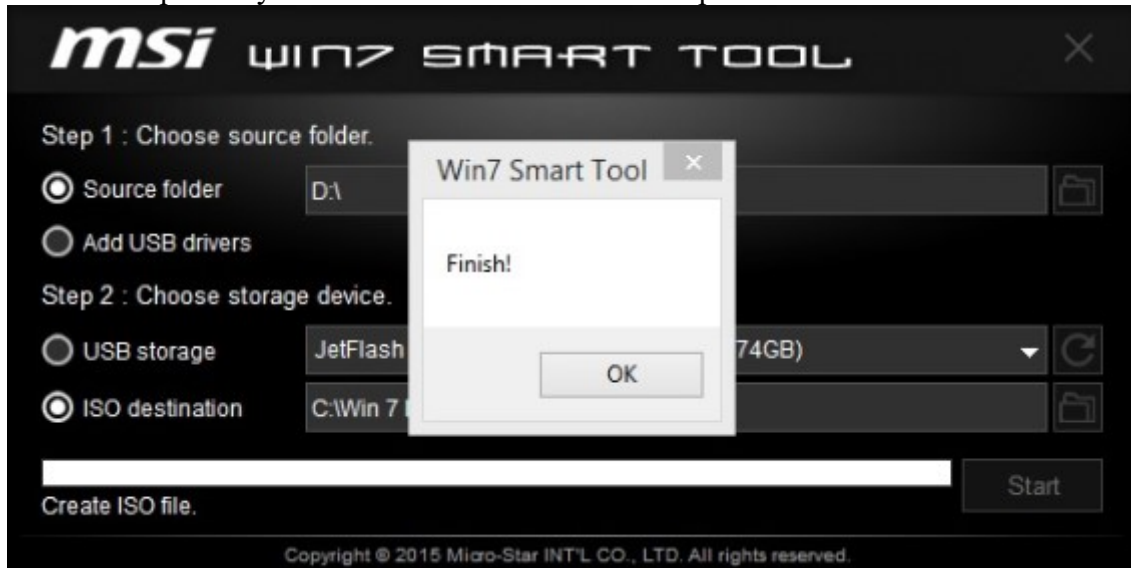
Click  to specify the location of ISO file destination drive and select “ISO Destination” option in the menu.



Click “Start” to create file.



Please wait patiently for 10 to 15 minutes for file completion.

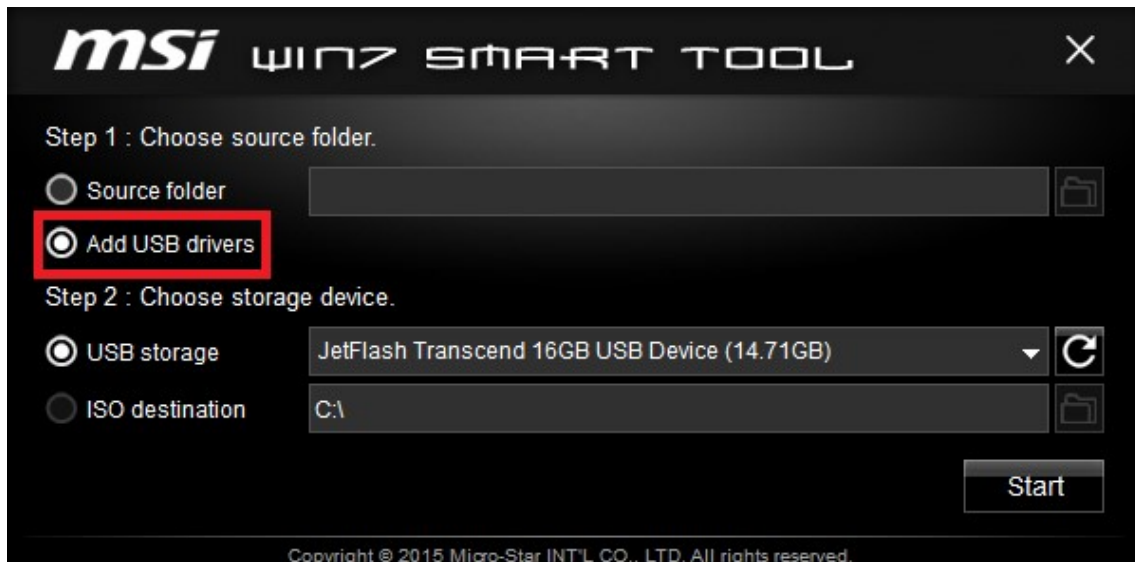



The ISO file is now ready. Please burn the ISO file into a DVD disk and use the DVD disk to install Win7.

- **Add USB Drivers**

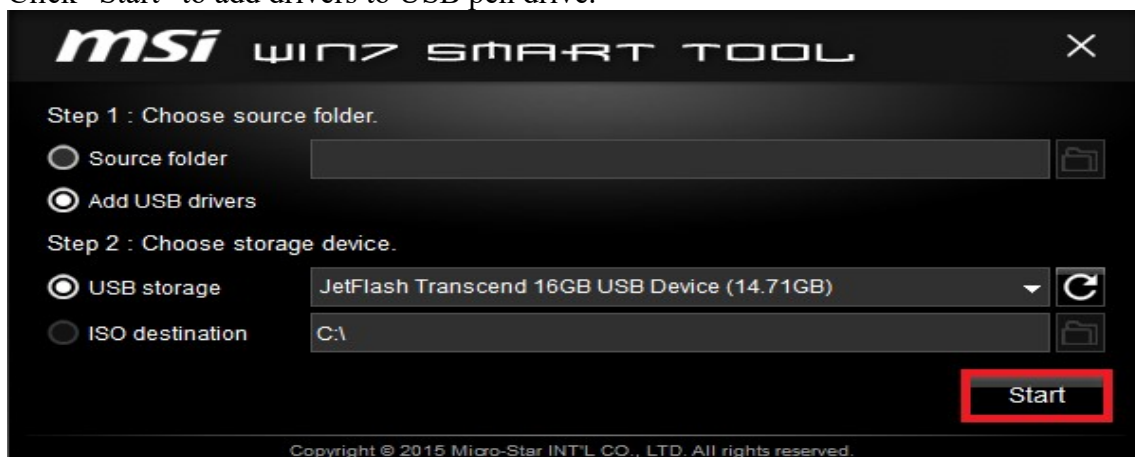
Note: This will help enable USB keyboard/mouse function for your existing Win7 USB bootable pen drive

Select “Add USB drivers”.

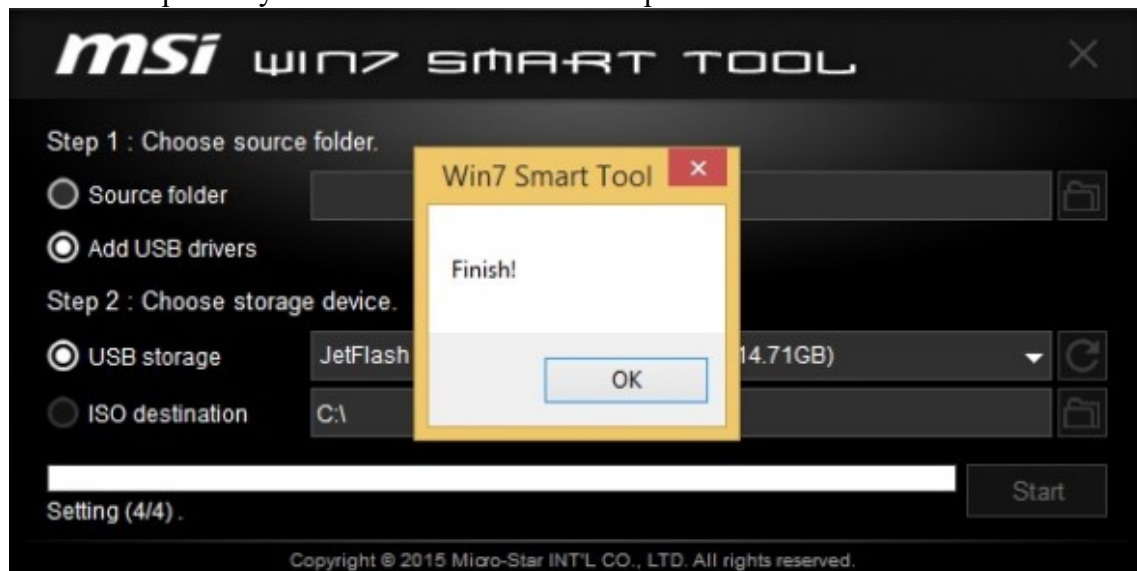


Plug in the bootable Win 7 USB pen drive, click  to locate the device.

Click “Start” to add drivers to USB pen drive.



Please wait patiently for few minutes for file completion.



The USB pen drive is now ready for Win7 installation.