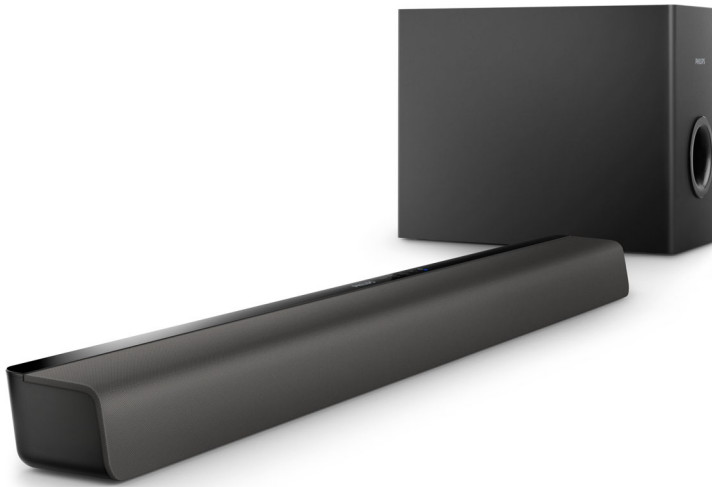


Philips
Soundbar speaker

2.1 CH wireless subwoofer
Bluetooth®
Dolby Digital

HTL2140B



Powerful sound for any TV

with wireless subwoofer

Unleash the full sound potential of all your media devices and enjoy the freedom of placement provided by the wireless subwoofer. This soundbar works with your TV, discs players, gaming console, MP3 player and bluetooth devices.

Richer sound for watching TV and movies

- Wireless subwoofer for clutter free placement
- Twin tweeters for optimum clarity performance
- Virtual Surround Sound for a realistic movie experience
- Dolby Digital for ultimate movie experience
- 60W RMS power delivers great sound for movies and music

Connect and enjoy all your entertainment

- Wireless music streaming via Bluetooth
- Enjoy MP3 music directly from your portable USB devices
- Audio in to enjoy music from iPod/iPhone/MP3 player
- Works with TVs, BD/DVD players, gaming consoles, MP3 players

Designed for simplicity

- Flexible placement on the wall or tabletop
- Ultra-compact soundbar - just 70cm/28" wide
- Low-rise profile for the perfect fit in front of your TV

PHILIPS

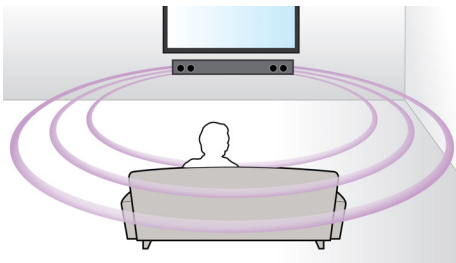
Highlights

Bluetooth



Bluetooth is a short range wireless communication technology that is both stable and energy efficient. The technology allows for easy wireless connection to other Bluetooth devices, so you can play your favorite music from any smartphone, tablet or laptop, including the iPod or iPhone with a Bluetooth-enabled speaker.

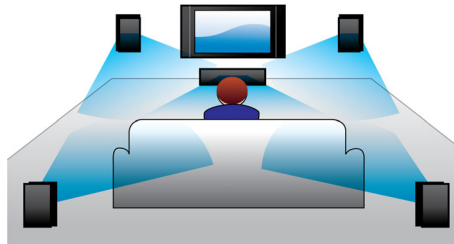
Virtual Surround Sound



Philips Virtual Surround Sound produces rich and immersive surround sound from less than

five-speaker system. Highly advanced spatial algorithms faithfully replicate the sonic characteristics that occur in an ideal 5.1-channel environment. Any high quality stereo source is transformed into true-to-life, multi-channel surround sound. No need to purchase extra speakers, wires or speaker stands to appreciate room-filling sound.

Dolby Digital



Because Dolby Digital, the world's leading digital multi-channel audio standards, make use of the way the human ear naturally processes sound, you experience superb quality surround sound audio with realistic spatial cues.

Enjoy MP3 music directly

Enjoy MP3 music directly from your portable USB devices

Audio in



Audio in allows you to easily play your music directly from your iPod/iPhone/iPad, MP3 player, or laptop via a simple connection to your home cinema. Simply connect your audio device to the Audio in jack to enjoy your music with the superior sound quality of the Philips home cinema system.



Specifications

Sound

- Sound Enhancement: Treble and Bass Control, Virtual Surround Sound
- Sound System: Dolby Digital
- Speaker output power: 2 x 15 W
- Subwoofer output power: 30W
- Total Power RMS @ 10% THD: 60 W

Loudspeakers

- Loudspeaker types: Integrated with main unit
- Drivers per Soundbar: 2x mylar tweeters, 2x woofers
- Speaker Impedance: 8 ohm
- Tweeter Impedance: 8 ohm
- Subwoofer type: Wireless subwoofer
- Subwoofer driver: 1 x 5.25" woofer
- Subwoofer freq range: 45-200 Hz
- Subwoofer impedance: 8 ohm

Connectivity

- iPod/iPhone: via bluetooth, via 3.5mm Audio In
- Rear Connections: AUX in, Digital coaxial in, Digital optical in, USB
- Integrated Connections: Bluetooth

Design

- Wall mountable

Power

- Power consumption: 25 W
- Standby power consumption: < 0.5 W
- Subwoofer power consumption: 15 W
- Subwoofer Power supply: 110-240 V~, 50-60 Hz
- Main unit power supply: 100-240V AC, 50/60 Hz

Sustainability

- Packaging: 80% recycled corrugated board

Dimensions

- Main Unit (W x H x D): 708 x 47 x 65 mm
- Main Unit Weight: 1 kg
- Packaging (W x H x D): 790 x 285 x 300 mm
- Weight incl. Packaging: 5.4 kg

- Subwoofer (W x H x D): 190 x 250 x 315 mm
- Subwoofer Weight: 2.6 kg

Accessories

- Included accessories: AAA Battery (x1), Quick start guide, Remote Control, Safety & Legal Leaflet, Trademarks Sheet, 2 x Power cords

Packaging dimensions

- UPC: 8 89446 00086 3
- Packaging dimensions (W x H x D): 75.6 x 39.5 x 22 cm
- Packaging dimensions (W x H x D): 29.8 x 15.6 x 8.7 inch
- Gross weight: 5.5 kg
- Gross weight: 12.125 lb
- Nett weight: 3.734 kg
- Nett weight: 8.232 lb
- Number of products included: 1
- Packaging type: Carton
- Tare weight: 1.766 kg
- Tare weight: 3.893 lb
- Type of shelf placement: Laying

Outer Carton

- Gross weight: 5.5 kg
- Gross weight: 12.125 lb
- Outer carton (L x W x H): 75.6 x 22 x 39.5 cm
- Outer carton (L x W x H): 29.8 x 8.7 x 15.6 inch
- Nett weight: 8.232 lb
- Nett weight: 3.734 kg
- Number of consumer packagings: 1
- Tare weight: 3.893 lb
- Tare weight: 1.766 kg
- UPC: 8 89446 00086 3

Product dimensions

- Product dimensions (W x H x D): 70.8 x 4.7 x 6.5 cm
- Product dimensions (W x H x D): 27.9 x 1.9 x 2.6 inch
- Weight: 1.05 kg
- Weight: 2.315 lb



Issue date 2016-12-07

Version: 4.1.8

12 NC: 8670 001 27295
UPC: 8 89446 00086 3

© 2016 Koninklijke Philips N.V.
All Rights reserved.

Specifications are subject to change without notice.
Trademarks are the property of Koninklijke Philips N.V.
or their respective owners.

www.philips.com