

White and color ambiance Single bulb E27

- Single bulb
- E27

8718696461655



Limitless possibilities

Connected to you

Include a Philips Hue White and colour ambiance bulb in your Philips Hue system and experience high-quality white and coloured light. Connect it to the Philips Hue Bridge and control it with your smartphone or tablet.

Benefits

Turn on your imagination

- Play with light and choose from 16 million colours
- Sync your Philips Hue lights with films and music

Turn on your moments

- Warm white to cool bright daylight
- Energise, concentrate, read and relax with light
- Wake up gently to your personal sunrise

Turn on your peace of mind

- Control your lights from anywhere
- Set light schedules for easy home automation
- Control your lights, your way

Easy, reliable and future-proof system

- Connect up to 50 Philips Hue lights

PHILIPS

Features

Paint with light



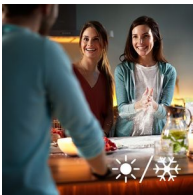
Play with light and choose from 16 million colours in the Hue app to match the light to your mood. Use a favourite photo and re-live that special moment with splashes of light. Save your favourite light settings and recall them whenever you want with the tap of a finger.

Sync light to music and films



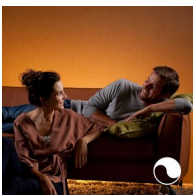
Extend your TV viewing experience to the whole room or lift your gaming experience to the next level. Download a third-party app and discover the amazing things you can do with Philips Hue. Or sync light to your favourite music and enjoy every beat to the fullest. Turn any room into a dance floor and see how light reacts to your music. Download one of the third-party apps and get the party started with Philips Hue.

Create your ambience



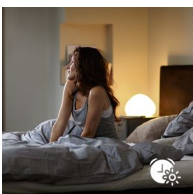
Set the right ambience for any moment with a range of beautiful, natural white light. Use the app to set any shade of white light, from cool energising daylight to relaxing warm white light. Take control and set the ambience. Not too bright. Not too dark. Just right.

Light for your well-being



Light influences our mood, behaviour, alertness and routines. Through the app, you can set the light that is optimal for your moment. Philips Hue helps you to energise, concentrate, read and relax. Customise your daily routines into moments you can enjoy. Feel different. Feel better.

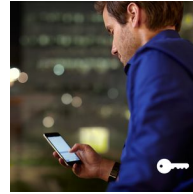
Wake up naturally



Ease your sleeping routine and wake up gently for a fresh start each day. Philips Hue will help get you out of bed in a nice way. The gradually increasing

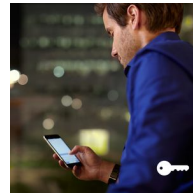
light intensity gives you the feeling that you are waking up naturally with sunlight — rather than the rude awakening of an alarm ringing.

Away-from-home control



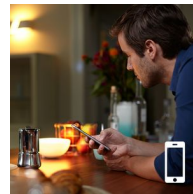
You can control your lights remotely wherever you are. Check if you have forgotten to switch your lights off before you left your home, and switch them on if you are working late. With geofencing technology, your lights can even welcome you home or switch off automatically when you leave your home. It's all about simplifying your life and giving you peace of mind in smart and useful ways.

Set light schedules



Philips Hue can make it seem like you're at home when you're not, using the schedule function in the Philips Hue app. Set the lights to come on at a pre-set time, so the lights are on when you arrive home. You can even set rooms to light up at different times. And of course, you can let the lights turn off gradually in the night, so you never have to worry whether you've left any lights on.

Smart control



Connect your Philips Hue lights with the Bridge and start discovering the endless possibilities. Control your lights from your smartphone or tablet via the Philips Hue app, or add switches to your system to activate your lights. Set timers, notifications, alarms and more for the full Philips Hue experience.

Expand your ecosystem



You can connect up to 50 lights and 10 accessories to the Philips Hue Bridge (not included). Simply begin with any of the available starter kits or a separate bridge and start adding Philips Hue products. You can then control your lights at the swipe of a finger with the intuitive Philips Hue app. Philips Hue is based on ZigBee, a low-power, safe and reliable technology to control your lights. New features and improvements are continuously added to the system. Updates to both software and firmware are made wirelessly and seamlessly directly to your Philips Hue products.

Specifications

Please note that this is a pre-sales leaflet. The contents of this leaflet reflect the best of our knowledge per date and country mentioned above. The contents of this leaflet are subject to change without notice. Philips does not accept any liability as to the contents of this leaflet.

The bulb

Fitting	E27 screw base fitting
Form factor	A60
Lifetime	25000 hour(s)
Wattage	10 W
Light output	16 million colours Functional white light All shades of white [from warm to cold colour temperatures 2000-6500K] From warm to cold white colour Dimmable via smart device only Beam angle - 160° +- 20°
Lumen output	342 lm @ 2000K 570 lm @ 3000K 806 lm @ 4000K 550 lm @ 6500 K 80 lm/W efficacy @4000K

Software upgradable	>80 CRI from 2000–4000K
Start up	Yes
Height	Instant 100% light output
Width	110 mm
	62 mm

What's in the box

Hue bulbs	1
-----------	---

Environmental

Operational humidity	0%<H <80% (non condensing)
Operational temperature	0°C - 40°C

Guarantee

2 years	Yes
---------	-----



data subject to change
2018, August 1

Version: 3.0.1
EAN: 8718696461655

© 2018 Koninklijke Philips N.V.
All rights reserved.

Specifications are subject to change without notice. Trademarks are the property of Koninklijke Philips N.V. or their respective owners.

www.philips.com