

PHILIPS

NORELCO

Replacement
shaving heads

Sh50/52 Blade Refill

Compatible with Norelco Shaver
Series 5000 Rounded Heads and
6000 (except S6600 & S6800
whose refill is SH71)

Fits AquaTouch (AT8xx, AT7xx,
S5xxx)

Fits PowerTouch (PT8xx, PT7xx)

Fits PowerTouch (PT8xx, PT7xx)

SH50/52



Reset your shaver to new

Replace every 24 months for a shaver like new

Within two years, your shaver heads cut 9 million hairs on your face. Replace the shaver heads and get back to 100% performance.

Easy to use

- Change heads every 24 months for the best performance
- Reset your shaver very simply

Compatibility

- For shavers series 5000 and 6000 rounded shape

Performance

- Fast and close shave

Sustainability

- Recyclable packaging*

Sh50/52 Blade Refill

Replacement shaving heads

SH50/52

Highlights

MultiPrecision blades



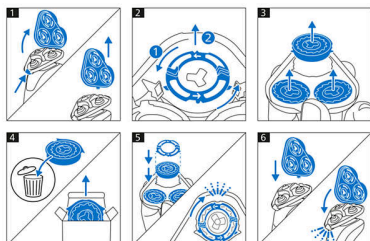
The MultiPrecision blades raise and cut all hairs and remaining stubble – all in a few strokes.

Compatibility



Check the back of your shaver's handle to confirm replacement head. Need help? Visit philips.com/accessories

Simple replacement



1. Open the shaver by pressing the "release" button; 2. Remove the retaining rings by turning them counterclockwise; 3. Take out the old

shaving heads and carefully insert replacements; check that the heads align exactly in the setting; 4. Replace the retaining rings and secure them by turning the lock clockwise; 5. When you close the shaving head properly, you will hear it click into place.

Reset your shaver to new



Replace the shaver heads every 24 months to ensure best performance or your device.

Recyclable packaging*



At Philips we strive for sustainability in all aspects of product development. This packaging comes without plastic parts and is fully recyclable*.

Specifications

Shaving heads

Shaving heads per packaging: 3

Fits product type: Shaver series S5000 rounded shape, Shaver series S6000 rounded shape

