

Philips Brilliance
LCD monitor with
PowerSensor

B Line

22 (21.5"/54.6 cm diag.)
1920 x 1080 (Full HD)

Brilliance

221B6LPCB



Crisp images, efficient performance

with PowerSensor saves energy

The Philips PowerSensor LED display using 85% post consumer recycled plastics and PVC, BFR-free housing is ideal for eco-friendly productivity

Excellent performance

- LED technology ensures natural colours
- Less eye fatigue with Flicker-Free technology
- SmartImage pre-sets for easy optimised image settings
- SmartContrast 20,000,000:1 for incredible rich black details

Designed for people

- SmartErgoBase enables user-friendly ergonomic adjustments
- Low bezel-to-table height for maximum reading comfort

Easy to experience

- Built-in stereo speakers for multimedia
- USB Hub with four ports for easy connections

Sustainable Eco-design

- PowerSensor saves up to 80% energy costs

PHILIPS

Highlights

LED technology

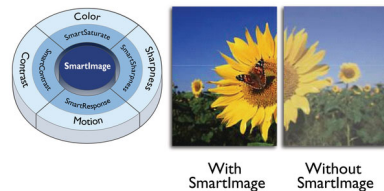
White LED's are solid state devices which light up to full, consistent brightness faster saving startup time. LED's are free from mercury content, which allows for eco-friendly recycling and disposal process. LED's allow for better dimming control of the LCD backlight, resulting in a super high contrast ratio. It also gives superior colour reproduction thanks to consistent brightness across the screen.

Flicker-Free technology



Due to the way brightness is controlled on LED-backlit screens, some users experience flicker on their screen which causes eye fatigue. Philips Flicker-Free technology applies a new solution to regulate brightness and reduce flicker for more comfortable viewing.

SmartImage



SmartImage is an exclusive leading edge Philips technology that analyses the content displayed on your screen and optimises your display performance. This user-friendly interface allows you to select various modes, like Office, Photo, Movie, Game, Economy etc., to fit the application in use. Based on the selection, SmartImage dynamically optimises the contrast, colour saturation and sharpness of images and videos for ultimate display performance. The Economy mode option offers you major power savings. All in real time at the touch of a single button!

SmartContrast ratio 20,000,000:1



You want the LCD flat display with the highest contrast and most vibrant images. Philips advanced video processing combined with unique extreme dimming and backlight-boosting technology results in vibrant images. SmartContrast will increase the contrast with excellent black level and accurate rendition of dark shades and colours. It gives a bright, lifelike picture with high contrast and vibrant colours.

SmartErgoBase



The SmartErgoBase is a monitor base that delivers ergonomic display comfort and provides cable management. The user-friendly height, swivel, tilt and rotation angle adjustments of the base allow the monitor to be positioned for maximum comfort to help ease the physical strains of a long workday. In addition, cable management reduces cable clutter and keeps the workspace neat and professional.

Low bezel-to-table height



Thanks to its advanced SmartErgoBase, the Philips monitor can be lowered down almost

to desk level for a comfortable viewing angle. Low bezel-to-table height is the perfect solution if you use bifocals, trifocals or progressive lens glasses for your computing work. Additionally, it allows users of different heights to use the monitor at their preferred angle and height settings, helping them to reduce fatigue and strain.

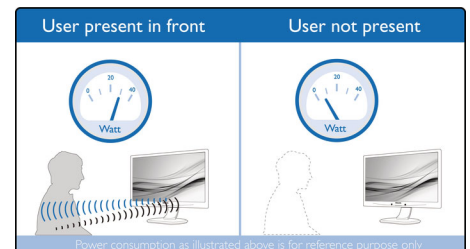
Built-in stereo speakers

A pair of high-quality stereo speakers built into a display device. They may be visible front firing, or invisible down firing, top firing, rear firing etc. depending on model and design.

Four Ports USB 2.0 HUB

USB Hub allows user to conveniently connect their plug and play multimedia devices such as USB memory devices, camera, portable HDD, Web camera, PDA, Printer and many other devices which have USB connection available. The conveniently located USB 2.0 Hub on the monitor allows USB 2.0 signals to pass through to the computer. Note that many devices like cameras and HDD may need to be powered On independently, as they have higher power requirements than the monitor USB Hub can provide.

PowerSensor



PowerSensor is a built-in 'people sensor' that transmits and receives harmless infrared signals to determine if the user is present and then automatically reduces monitor brightness when the user steps away from the desk, cutting energy costs by up to 80 percent and prolonging monitor life



Specifications

Picture/Display

- LCD panel type: TFT-LCD
- Backlight type: W-LED system
- Panel Size: 21.5 inch/54.6 cm
- Effective viewing area: 476.64 (H) x 268.11 (V)
- Aspect ratio: 16:9
- Optimum resolution: 1920 x 1080 @ 60 Hz
- Response time (typical): 5 ms
- Brightness: 250 cd/m²
- Contrast ratio (typical): 1000:1
- SmartContrast: 20,000,000:1
- Pixel pitch: 0.248 x 0.248 mm
- Viewing angle: 170° (H)/160° (V), @ C/R > 10
- Picture enhancement: SmartImage
- Display colours: 16.7 M
- Scanning Frequency: 30 - 83 kHz (H) / 56 - 76 Hz (V)
- sRGB

Connectivity

- Signal Input: DVI-D (digital, HDCP), VGA (Analogue)
- USB: USB 2.0 x 4
- Sync Input: Separate Sync, Sync on Green
- Audio (In/Out): PC audio-in, Headphone out

Convenience

- Built-in Speakers: 2 W x 2
- User convenience: SmartImage, Volume, PowerSensor, Menu, Power On/Off
- Control software: SmartControl
- OSD Languages: Brazil Portuguese, Czech, Dutch, English, Finnish, French, German, Greek, Hungarian, Italian, Japanese, Korean, Polish, Portuguese, Russian, Simplified Chinese, Spanish, Swedish, Traditional Chinese, Turkish, Ukrainian
- Other convenience: Kensington lock, VESA mount (100 x 100 mm)
- Plug and Play Compatibility: DDC/CI, Mac OS X, sRGB, Windows 10 / 8.1 / 8 / 7

Stand

- Height adjustment: 110 mm
- Pivot: 90 degree
- Swivel: -75/+75 degree
- Tilt: -5/20 degree

Power

- ECO mode: 11.01 W (typ.)
- On mode: 15.1 W (typ.) (EnergyStar 7.0 test

method)

- Standby mode: < 0.3 W (typ.)
- Off mode: Zero watts with AC switch
- Power LED indicator: Operation - White, Standby mode - White (flashing)
- Power supply: Built-in, 100–240 VAC, 50–60 Hz

Dimensions

- Product with stand (max height): 511 x 483 x 227 mm
- Product without stand (mm): 511 x 319 x 52 mm
- Packaging in mm (W x H x D): 565 x 422 x 184 mm

Weight

- Product with stand (kg): 4.83 kg
- Product without stand (kg): 2.99 kg
- Product with packaging (kg): 6.61 kg

Operating conditions

- Temperature range (operation): 0°C to 40°C °C
- Temperature range (storage): -20°C to 60°C °C
- Relative humidity: 20%-80 %
- Altitude: Operation: +12,000 ft (3658 m), Non-operation: +40,000 ft (12,192 m)
- MTBF: 70,000 hrs (excluded backlight) hour(s)

Sustainability

- Environmental and energy: EnergyStar 7.0, PowerSensor, EPEAT*, RoHS
- Recyclable packaging material: 100 %
- Post-consumer recycled plastic: 85%
- Specific Substances: PVC/BFR free housing, Mercury free, Lead free

Compliance and standards

- Regulatory Approvals: CE Mark, FCC Class B, SEMKO, cETLus, CU-EAC, TUV/GS, TUV Ergo, EPA, PSB, WEEE, RCM, UKRAINIAN, CECP, ICES-003, E-standby, J-MOSS

Cabinet

- Front bezel: Black
- Rear cover: Black
- Foot: Black
- Finish: Texture

What's in the box?

- Monitor with stand
- Cables: VGA, DVI, Audio, Power
- User Documentation



Issue date 2020-04-26

Version: 5.0.1

12 NC: 8670 001 33677
EAN: 87 12581 73704 7

© 2020 Koninklijke Philips N.V.
All Rights reserved.

Specifications are subject to change without notice.
Trademarks are the property of Koninklijke Philips N.V.
or their respective owners.

www.philips.com

* EPEAT rating is valid only where Philips registers the product. Please visit <https://www.epeat.net/> for registration status in your country.