

# Always there to help you

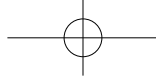
Register your product and get support at  
[www.philips.com/support](http://www.philips.com/support)



HTL2101B  
HTL2101S  
HTL2101T

# Quick start guide

# PHILIPS



## English

### Important

Read and understand all instructions before you use your product. If damage is caused by failure to follow instructions, the warranty does not apply.

### Help and support

For extensive online support, visit [www.philips.com/support](http://www.philips.com/support) to:

- download the user manual and the quick start guide
- watch video tutorials (available only for selected models)
- find answers to frequently answered questions (FAQs)
- email us a question
- chat with our support representative.

Follow the instructions on the website to select your language, and then enter your product model number.

Alternatively, you can contact Consumer Care in your country. Before you contact, note down the model number and serial number of your product. You can find this information on the back or bottom of your product.

### Safety

#### Risk of electric shock or fire!

- Never expose the product and accessories to rain or water. Never place liquid containers, such as vases, near the product. If liquids are spilt on or into the product, disconnect it from the power outlet immediately. Contact Consumer Care to have the product checked before use.

- Never place the product and accessories near naked flames or other heat sources, including direct sunlight.
- Never insert objects into the ventilation slots or other openings on the product.
- Where the mains plug or an appliance coupler is used as the disconnect device, the disconnect device shall remain readily operable.
- Disconnect the product from the power outlet before lightning storms.
- When you disconnect the power cord, always pull the plug, never the cable.

#### Risk of short circuit or fire!

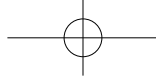
- Before you connect the product to the power outlet, ensure that the power voltage matches the value printed on the back or bottom of the product. Never connect the product to the power outlet if the voltage is different.

#### Risk of injury or damage to the SoundBar!

- Never place the product or any objects on power cords or on other electrical equipment.
- If the product is transported in temperatures below 5°C, unpack the product and wait until its temperature matches room temperature before connecting it to the power outlet.
- Parts of this product can be made of glass. Handle with care to avoid injury and damage.

#### Risk of overheating!

- Never install this product in a confined space. Always leave a space of at least four inches around the product for ventilation. Ensure curtains or other objects never cover the ventilation slots on the product.



### Risk of contamination!

- Do not mix batteries (old and new or carbon and alkaline, etc.).
- Danger of explosion if batteries are incorrectly replaced. Replace only with the same or equivalent type.
- Remove batteries if they are exhausted or if the remote control is not to be used for a long time.
- Batteries contain chemical substances, they should be disposed of properly.

### Risk of swallowing batteries!

- The product/remote control may contain a coin/button type battery, which can be swallowed. Keep the battery out of reach of children at all times! If swallowed, the battery can cause serious injury or death. Severe internal burns can occur within two hours of ingestion.
- If you suspect that a battery has been swallowed or placed inside any part of the body, seek immediate medical attention.
- When you change the batteries, always keep all new and used batteries out of reach of children. Ensure that the battery compartment is completely secure after you replace the battery.
- If the battery compartment cannot be completely secured, discontinue use of the product. Keep out of reach of children and contact the manufacturer.



This is CLASS II apparatus with double insulation, and no protective earth provided.

---

### Care for your product

Use only microfiber cloth to clean the product.

---

### Care of the environment



Your product is designed and manufactured with high quality materials and components, which can be recycled and reused.

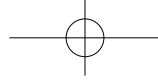
Never dispose of your product with other household waste. Please inform yourself about the local rules on the separate collection of electrical and electronic products and batteries. The correct disposal of these products helps prevent potentially negative consequences on the environment and human health.

Your product contains batteries, which cannot be disposed of with normal household waste.

Please inform yourself about the local rules on separate collection of batteries. The correct disposal of batteries helps prevent potentially negative consequences on the environment and human health. Please visit [www.recycle.philips.com](http://www.recycle.philips.com) for additional information on a recycling center in your area.



Use this product in the areas of an altitude of no more than 2000 meters only.



## 简体中文

### 重要信息

请在使用本产品之前阅读并理解所有说明。因未遵守说明而造成的损坏不在保修范围内。

### 帮助和支持

飞利浦提供广泛的在线支持。请访问我们的网站：

[www.philips.com/support](http://www.philips.com/support)，以便：

- 下载用户手册和快速入门指南
- 观看视频教程（仅限于选定的型号）
- 查找常见问题 (FAQ) 的答案
- 通过电子邮件向我们发送问题
- 与支持代表聊天。

请按照网站上的说明选择您的语言，然后输入您的产品型号。

或者，您可以联系您所在国家/地区的飞利浦客户服务中心。在联系飞利浦之前，请记下产品的型号和序列号。您可在产品的背面或底部找到此信息。

### 安全

#### 小心触电或发生火灾！

- 切勿让本产品及配件与雨或水接触。切勿将液体容器（如花瓶）置于产品旁边。如果有液体溅到本产品表面或内部，请立即断开其电源。请与 Philips 客户服务中心联系，对产品进行检查后再行使用。
- 切勿将本产品和附件放置在靠近明火或其它热源的地方，包括阳光直射处。
- 切勿将物体插入本产品的通风槽或其它开口。

- 将电源插头或设备耦合器用作断电设备时，该断电设备应可以随时使用。
- 在雷电天气之前，应断开本产品的电源。
- 断开电源线时，应始终握住插头，而不能拉电缆。

#### 小心短路或起火！

- 在将本产品连接到电源插座上之前，请确保电源电压与产品背面或底部印刷的电压值相匹配。如果电压不同，切勿将产品连接到电源插座上。

#### 小心受伤或损坏本回音壁！

- 切勿将本产品或任何物体放在电源线或其它电子设备上面。
- 如果在低于 5°C 的温度下运送了本产品，请先拆开产品的包装并等待其温度达到室温，再将其连接至电源插座。
- 本产品的部件可能由玻璃制造。请小心处理，以免受到伤害或造成损坏。

#### 小心过热！

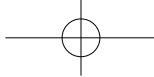
- 切勿将本产品安装在封闭的空间内。务必在产品周围留出至少 4 英寸的空间以便通风。确保窗帘或其它物体不会遮挡产品上的通风槽。

#### 小心污染！

- 请勿混合使用电池（旧电池与新电池或碳电池与碱性电池等等）。
- 电池安装不正确会有爆炸危险。只能用相同或相当的型号更换。
- 如果电池电量耗尽或遥控器长时间不用，请取下电池。
- 电池含有化学物质，因此应适当地进行处理。

#### 吞咽电池的危險！

- 产品/遥控器可能包含纽扣式/按钮式电池，容易被吞咽。始终将电池放在儿童接触不到的地方！如不慎吞咽，电池可能导致严重受伤或死亡。摄入后 2 小时内可能发生严重的内部烧伤。



- 如果您怀疑电池不慎被吞咽或位于体内的任何部位，请立即就医。
- 更换电池时，请务必将所有新旧电池放在儿童接触不到的地方。更换电池后，确保电池仓完全紧闭。
- 如果电池仓无法完全紧闭，请不要继续使用产品。放在儿童接触不到的地方并联系制造商。



此款 II 类设备具有双重绝缘，不提供保护接地。

---

## 爱护产品

只能用微细纤维清洁布清洁本产品。

---

## 爱护环境



本产品采用可回收利用的高性能材料和组件制造而成。  
切勿将本产品与其它生活垃圾一起处理。请自行了解当地关于分类收集电子、电气产品及电池的规定。正确弃置这些产品有助于避免对环境和人体健康造成潜在的负面影响。  
本产品所含的电池不能与一般的生活垃圾一同弃置。  
请自行了解当地关于分类收集电池的规定。正确弃置电池有助于避免对环境和人类健康造成潜在的负面影响。  
关于您所在地区回收中心的更多信息，请访问 [www.recycle.philips.com](http://www.recycle.philips.com)。

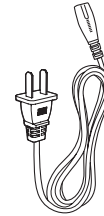
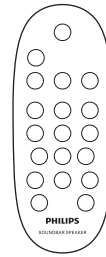
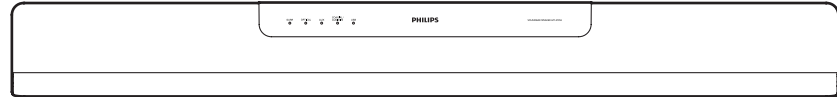


仅于海拔2000米以下地区使用该产品。



**EN** Before using your product, read all accompanying safety information

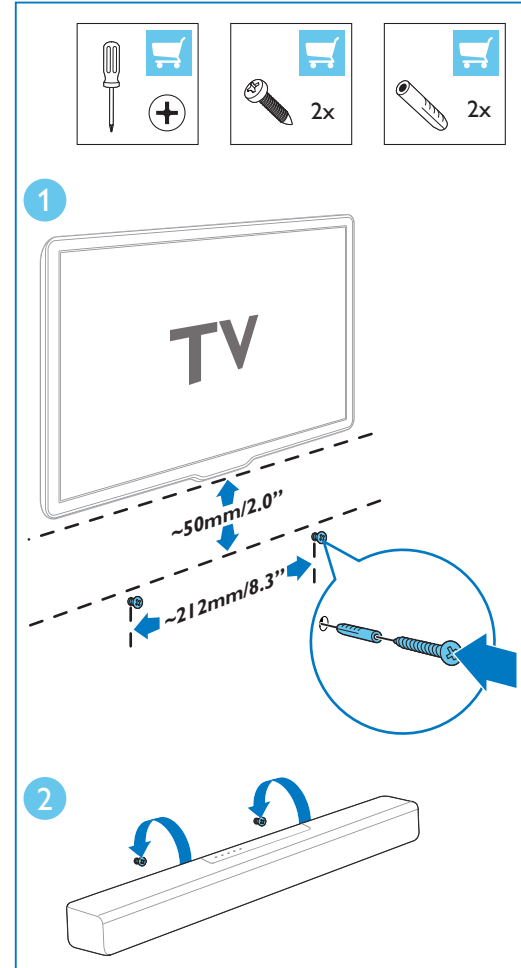
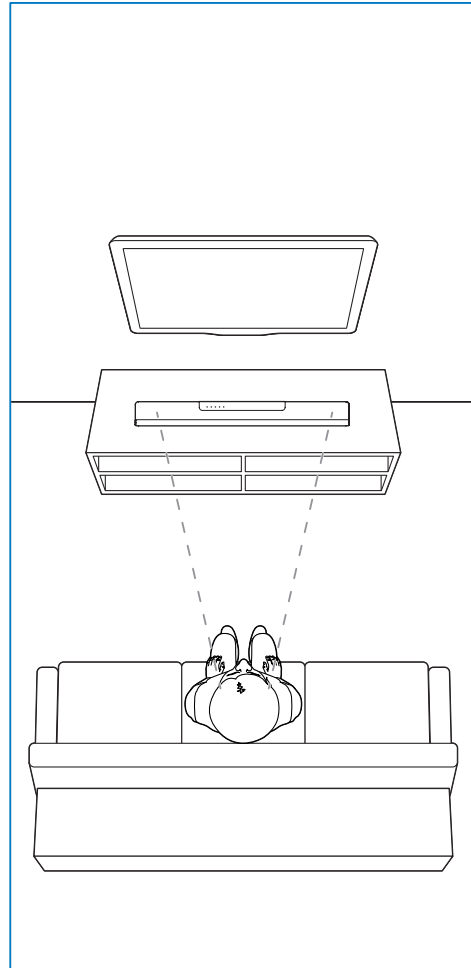
**ZH-CN** 使用产品前，请阅读所有随附的安全信息





# 1

**EN** Position the SoundBar  
**ZH-CN** 摆放回音壁

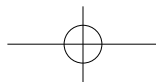
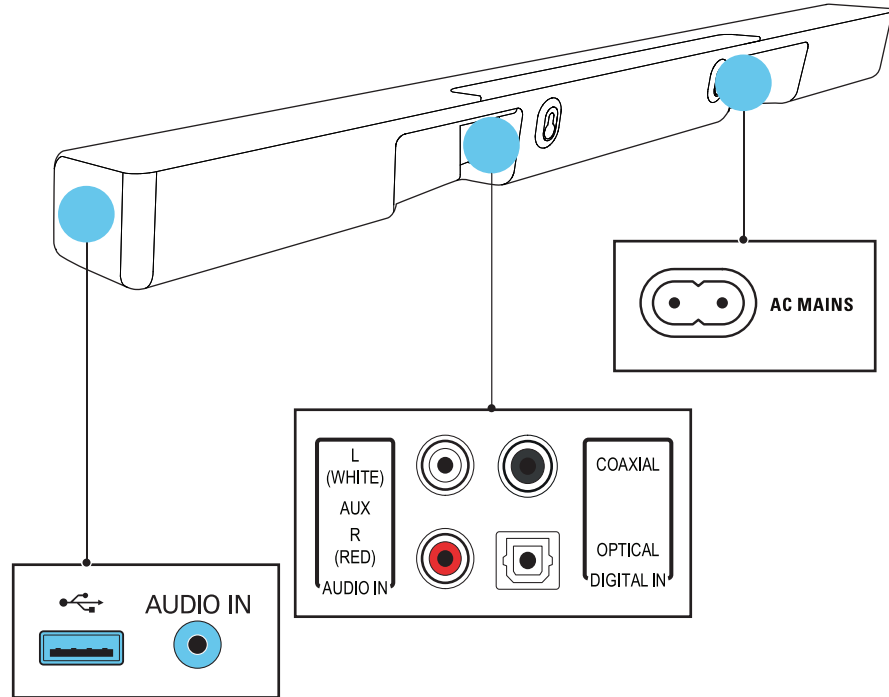




# 2

**EN** Connect the SoundBar

**ZH-CN** 连接回音壁



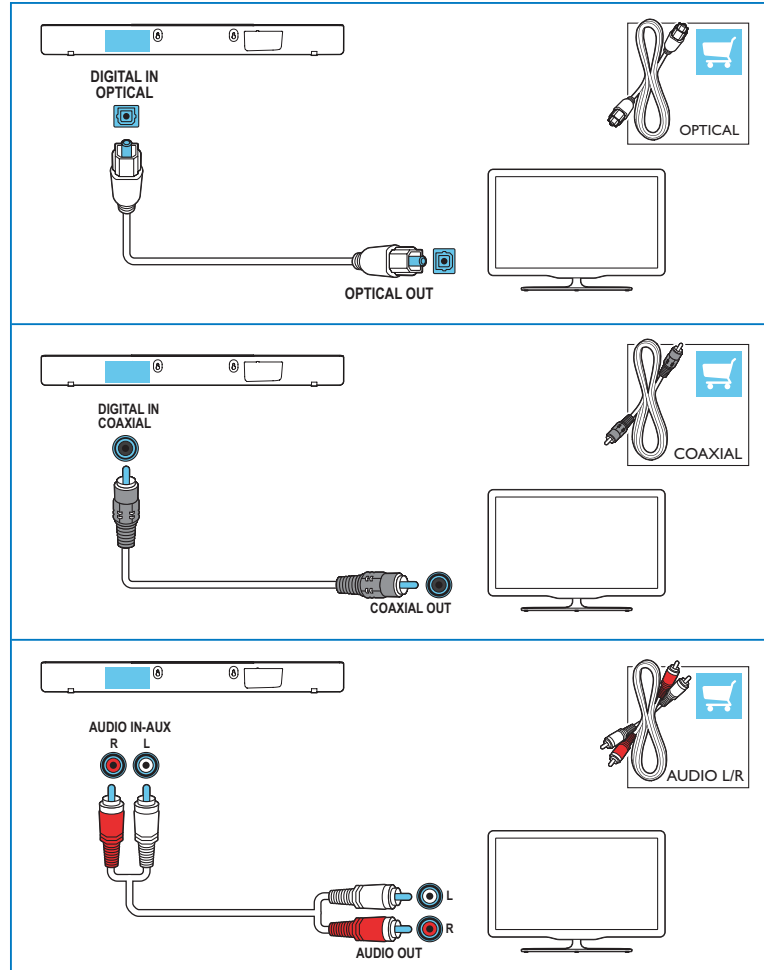




# 3

**EN** Hear audio from TV in one of the following ways (Mute your TV).

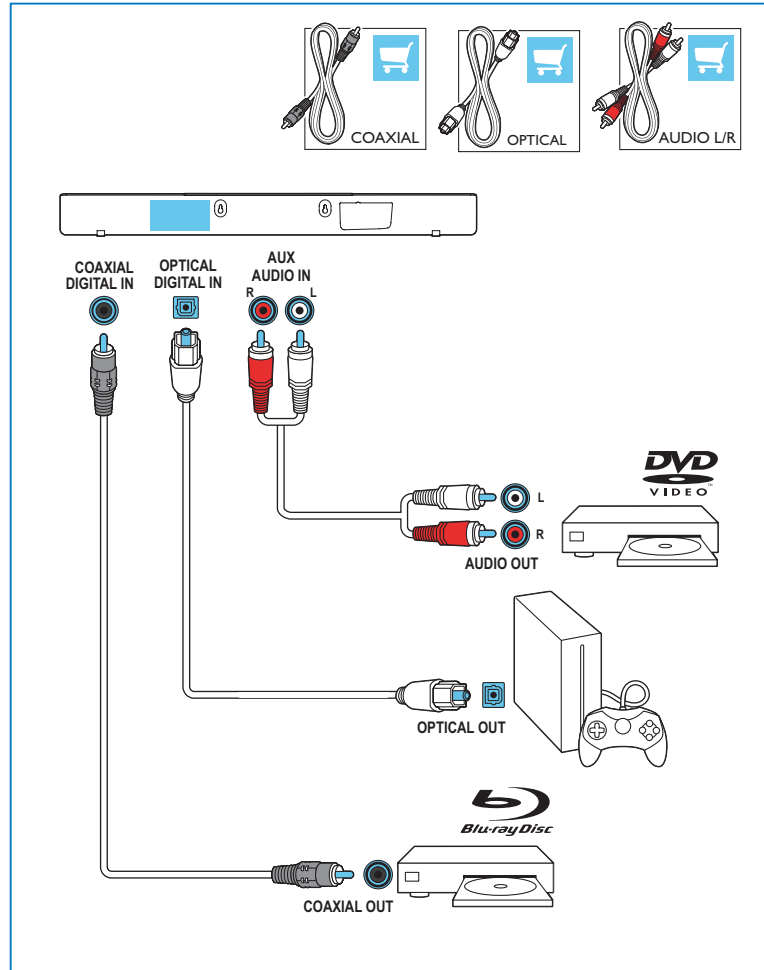
**ZH-CN** 选择以下一种连接方式连接电视（需将电视静音）





# 4

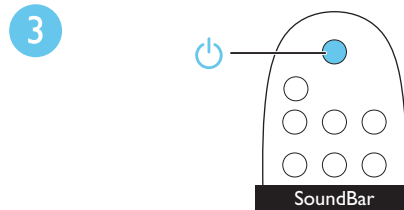
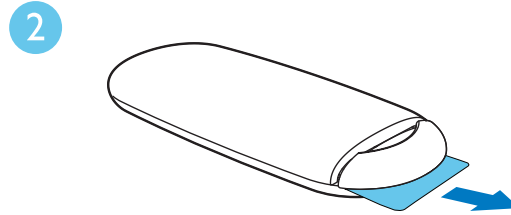
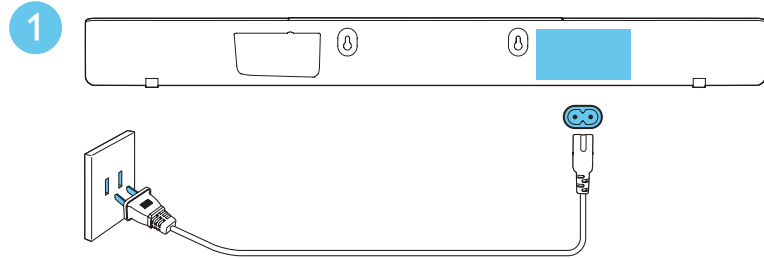
**EN** Enjoy audio from your devices  
**ZH-CN** 通过回音壁收听其它设备的音频





# 5

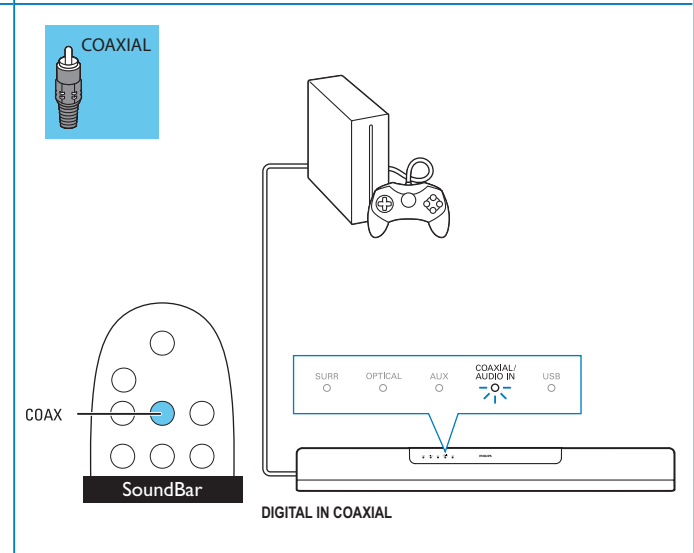
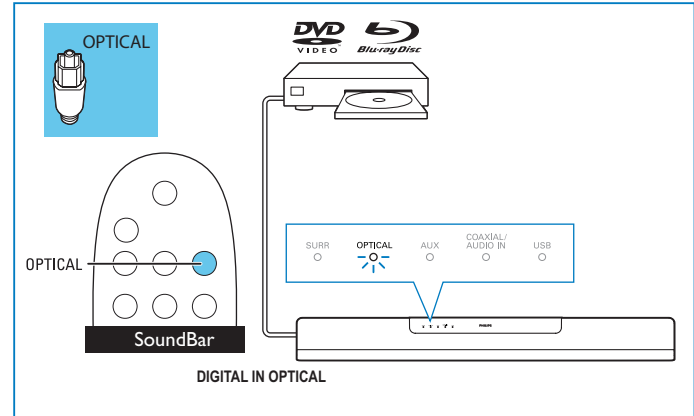
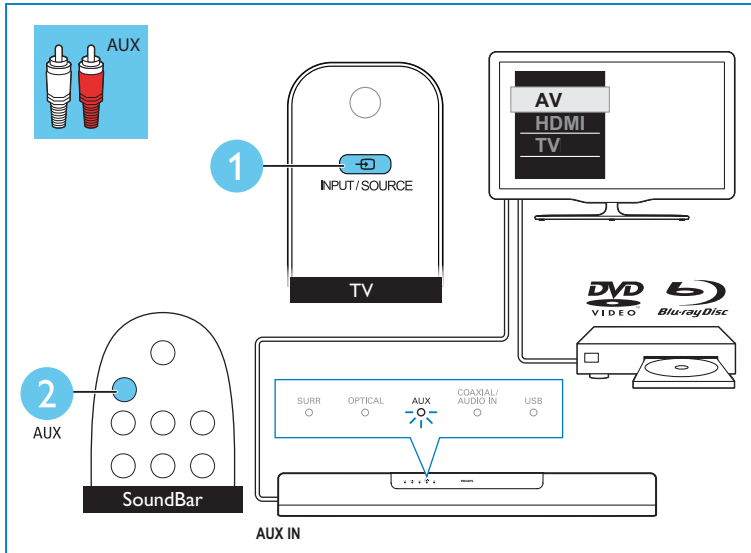
**EN** Switch on the SoundBar  
**ZH-CN** 开机





# 6

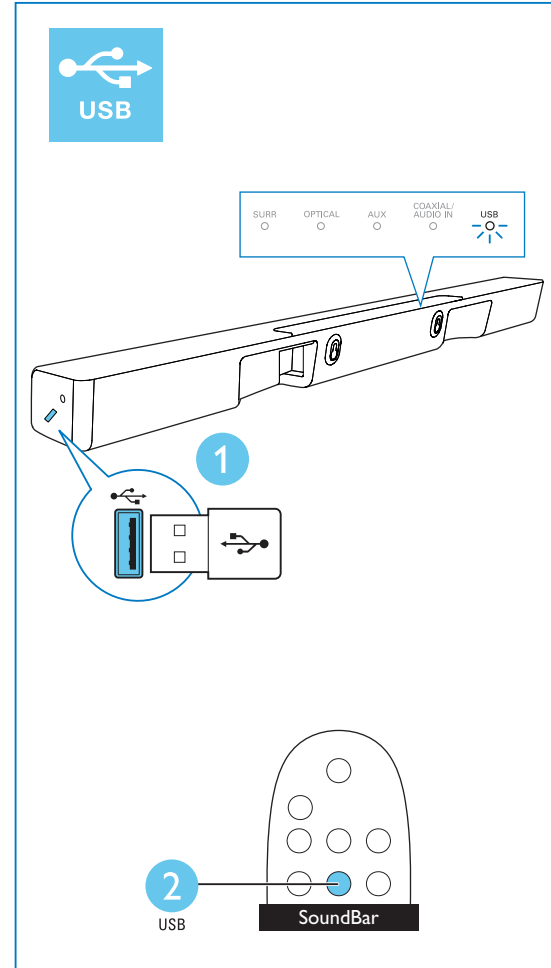
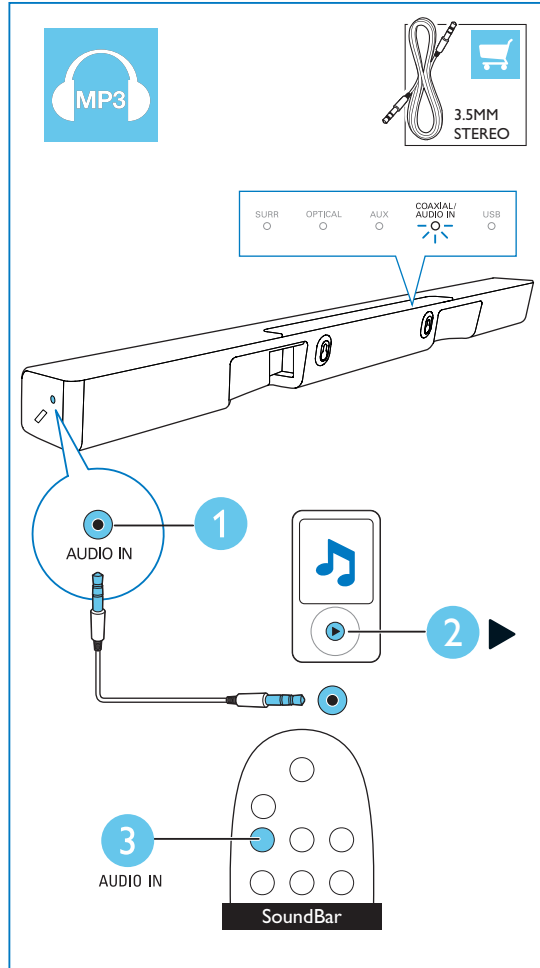
**EN** Select the correct audio source  
**ZH-CN** 选择正确的音频输入源





# 7

**EN** Play other devices  
**ZH-CN** 播放其它设备





**EN** For more information about using this product, visit [www.philips.com/support](http://www.philips.com/support)

**ZH-CN** 访问 [www.philips.com/support](http://www.philips.com/support) 更详尽地了解本产品



[www.philips.com/support](http://www.philips.com/support)



Manufactured under license from Dolby Laboratories. Dolby and the double-D symbol are trademarks of Dolby Laboratories.

## 产品中有害物质的名称及含量 Names and Contents of Hazardous Substances

部件名称 Name of the parts	有害物质 Hazardous Substance					
	铅 (Pb)	汞 (Hg)	镉 (Cd)	六价铬 (Cr (VI))	多溴联苯 (PBB)	多溴二苯醚 (PBDE)
Housing 外壳	○	○	○	○	○	○
Loudspeakers 喇叭单元	○	○	○	○	○	○
PWBs 电路板组件	×	○	○	○	○	○
Accessories (Remote control & cables) 附件 (遥控器, 电源线, 连接线)	×	○	○	○	○	○
Batteries in Remote Control (ZnC) 遥控器电池	×	○	○	○	○	○

本表格依据 SJ/T 11364 的规定编制。

The table is formulated according to SJ/T 11364.

- ：表示该有害物质在该部件所有均质材料中的含量均在 GB/T 26572 规定的限量要求以下。
- ： Indicates that this hazardous substance contained in all of the homogeneous materials for this part is below the limit requirement in GB/T 26572.
- ×
- ×
- ×
- ×

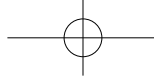


### 环保使用期限 Environmental Protection Use Period

此标识指期限（十年），电子电气产品中的有害物质在正常使用的条件下不会发生外泄或突变，用户使用该电子电气产品不会对环境造成严重污染或对其人身、财产造成严重损害的期限。

This logo refers to the period (10 years) during which the hazardous substances in electronic and electrical products will not leak or mutate so that the use of these [substances] will not result in any severe environmental pollution, any bodily injury or damage to any assets.





Specifications are subject to change without notice  
2014 © WOOX Innovations Limited. All rights reserved.  
Philips and the Philips' Shield Emblem are registered trademarks of Koninklijke Philips N.V. and are used by WOOX  
Innovations Limited under license from Koninklijke Philips N.V.

HTL2101B/2101S/2101T\_93\_QSG\_V3.0

