

Always there to help you

Register your product and get support at
www.philips.com/support



HTL1182B



User manual

PHILIPS

产品中有害物质的名称及含量
Names and Contents of Hazardous Substances

部件名称 Name of the parts	有害物质 Hazardous Substance					
	铅 (Pb)	汞 (Hg)	镉 (Cd)	六价铬 (Cr (VI))	多溴联苯 (PBB)	多溴二苯醚 (PBDE)
Housing 外壳	○	○	○	○	○	○
Subwoofer 超重低音箱	×	○	○	○	○	○
Loudspeakers 喇叭单元	○	○	○	○	○	○
PWBs 电路板组件	×	○	○	○	○	○
Accessories (Remote control & cables) 附件 (遥控器, 电源线, 连接线)	×	○	○	○	○	○
Batteries in Remote Control (ZnC) 遥控器电池	×	○	○	○	○	○

本表格依据 SJ/T 11364 的规定编制。

The table is formulated according to SJ/T 11364.

- ：表示该有害物质在该部件所有均质材料中的含量均在 GB/T 26572 规定的限量要求以下。
- ： Indicates that this hazardous substance contained in all of the homogeneous materials for this part is below the limit requirement in GB/T 26572.
- ×：表示该有害物质至少在该部件的某一均质材料中的含量超出 GB/T 26572 规定的限量要求。
- ×： Indicates that this hazardous substance contained in at least one of the homogeneous materials used for this part is above the limit requirement in GB/T 26572.



环保使用期限 Environmental Protection Use Period

此标识指期限（十年），电子电气产品中的有害物质在正常使用的条件下不会发生外泄或突变，用户使用该电子电气产品不会对环境造成严重污染或对其人身、财产造成严重损害的期限。

This logo refers to the period (10 years) during which the hazardous substances in electronic and electrical products will not leak or mutate so that the use of these [substances] will not result in any severe environmental pollution, any bodily injury or damage to any assets.

Contents

1	Important	2
	Help and support	2
	Safety	2
	Care for your product	3
	Care of the environment	3

2	Your product	4
	Main unit	4
	Remote control	4
	Connectors	5

3	Connect	6
	Placement	6
	Connect audio from TV and other devices	6

4	Use your product	7
	Adjust the volume	7
	Choose your sound	7
	MP3 player	8
	USB storage devices	8
	Auto standby	9

5	Apply factory settings	9
----------	-------------------------------	---

6	Update software	10
	Check software version	10
	Update software via USB	10

7	Wall mount	11
----------	-------------------	----

8	Product specifications	11
----------	-------------------------------	----

9	Troubleshooting	12
----------	------------------------	----

1 Important

Read and understand all instructions before you use your product. If damage is caused by failure to follow instructions, the warranty does not apply.

Help and support

For extensive online support, visit www.philips.com/support to:

- download the user manual and the quick start guide
- watch video tutorials (available only for selected models)
- find answers to frequently answered questions (FAQs)
- email us a question
- chat with our support representative.

Follow the instructions on the website to select your language, and then enter your product model number.

Alternatively, you can contact Consumer Care in your country. Before you contact, note down the model number and serial number of your product. You can find this information on the back or bottom of your product.

Safety

Risk of electric shock or fire!

- Before you make or change any connections, make sure that all devices are disconnected from the power outlet.
- Never expose the product and accessories to rain or water. Never place liquid containers, such as vases, near the product. If liquids are spilt on or into the product, disconnect it from the power outlet immediately. Contact Consumer Care to have the product checked before use.

- Never place the product and accessories near naked flames or other heat sources, including direct sunlight.
- Never insert objects into the ventilation slots or other openings on the product.
- Where the mains plug or an appliance coupler is used as the disconnect device, the disconnect device shall remain readily operable.
- Batteries (battery pack or batteries installed) shall not be exposed to excessive heat such as sunshine, fire or the like.
- Disconnect the product from the power outlet before lightning storms.
- When you disconnect the power cord, always pull the plug, never the cable.

Risk of short circuit or fire!

- For identification and supply ratings, see the type plate at the back or bottom of the product.
- Before you connect the product to the power outlet, ensure that the power voltage matches the value printed on the back or bottom of the product. Never connect the product to the power outlet if the voltage is different.

Risk of injury or damage to this product!

- Never place the product or any objects on power cords or on other electrical equipment.
- If the product is transported in temperatures below 5°C, unpack the product and wait until its temperature matches room temperature before connecting it to the power outlet.
- Parts of this product can be made of glass. Handle with care to avoid injury and damage.

Risk of overheating!

- Never install this product in a confined space. Always leave a space of at least four inches around the product for ventilation. Ensure curtains or other objects never cover the ventilation slots on the product.

Risk of contamination!

- Do not mix batteries (old and new or carbon and alkaline, etc.).
- Danger of explosion if batteries are incorrectly replaced. Replace only with the same or equivalent type.
- Remove batteries if they are exhausted or if the remote control is not to be used for a long time.
- Batteries contain chemical substances, they should be disposed of properly.

Risk of swallowing batteries!

- The product/remote control may contain a coin/button type battery, which can be swallowed. Keep the battery out of reach of children at all times! If swallowed, the battery can cause serious injury or death. Severe internal burns can occur within two hours of ingestion.
- If you suspect that a battery has been swallowed or placed inside any part of the body, seek immediate medical attention.
- When you change the batteries, always keep all new and used batteries out of reach of children. Ensure that the battery compartment is completely secure after you replace the battery.
- If the battery compartment cannot be completely secured, discontinue use of the product. Keep out of reach of children and contact the manufacturer.



This is CLASS II apparatus with double insulation, and no protective earth provided.

Care of the environment

Disposal of your old product



Your product is designed and manufactured with high quality materials and components, which can be recycled and reused. Do not throw away the product with the normal household waste at the end of its life, but hand it in at an official collection point or recycling. By doing this, you help to preserve the environment.

Care for your product

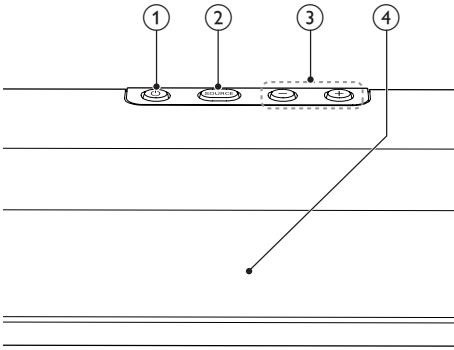
Use only microfiber cloth to clean the product.

2 Your product

Congratulations on your purchase, and welcome to Philips! To fully benefit from the support that Philips offers, register your product at www.philips.com/welcome.

Main unit

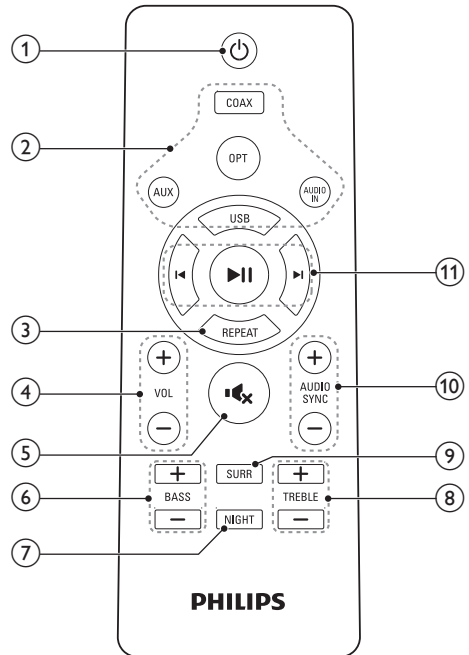
This section includes an overview of the main unit.



- ① **⏻**
Switch this product on or to standby.
- ② **SOURCE**
Select an input source for this product.
- ③ **Volume+/-**
Increase or decrease volume.
- ④ **Display panel**

Remote control

This section includes an overview of the remote control.

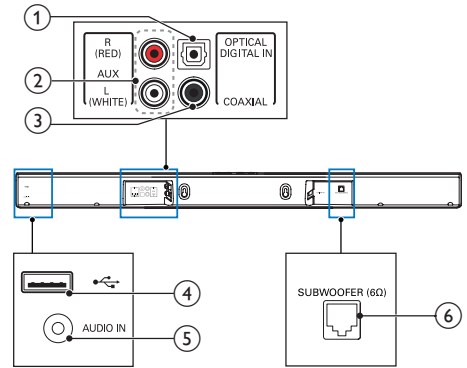


- ① **⏻ (Standby-On)**
Switch this product on or to standby.
- ② **Source buttons**
 - **COAX:** Switch your audio source to the coaxial connection.
 - **OPT:** Switch your audio source to the optical connection.
 - **AUX:** Switch your audio source to the AUX connection.
 - **AUDIO IN:** Switch your audio source to the MP3 connection (3.5mm jack).
 - **USB:** Switch your audio source to the USB connection.
- ③ **REPEAT**
Select or turn off repeat mode in USB mode.

- ④ **+/- (Volume)**
Increase or decrease volume.
- ⑤ **Mute**
Mute or restore volume.
- ⑥ **BASS +/-**
Increase or decrease bass.
- ⑦ **NIGHT**
Turn night mode on or off.
- ⑧ **TREBLE +/-**
Increase or decrease treble.
- ⑨ **SURR**
Toggle between stereo and virtual surround sound. Virtual surround is applicable for the audio codecs, such as MP3, PCM and MPEG (except Dolby Digital).
- ⑩ **AUDIO SYNC +/-**
Applicable to **COAXIAL (COAX)** and **OPTICAL (OPT)** sources only. Increase or decrease audio delay.
- ⑪ **Play buttons**
 - **▶|||**: Play, pause or resume play in USB mode.
 - **◀|▶**: Skip to the previous or next track in USB mode.

Connectors

This section includes an overview of the connectors available on this product.



- ① **DIGITAL IN-OPTICAL**
Connect to an optical audio output on the TV or a digital device.
- ② **AUX**
Connect to an analog audio output on the TV or an analog device.
- ③ **COAXIAL**
Connect to a coaxial audio output on the TV or a digital device.
- ④ **USB**
Audio input from a USB storage device.
- ⑤ **AUDIO IN**
Audio input from, for example, an MP3 player (3.5mm jack).
- ⑥ **SUBWOOFER**
Connect to the supplied subwoofer.

3 Connect

This section helps you connect this product to a TV and other devices.

For information about the basic connections of this product and accessories, see the quick start guide.

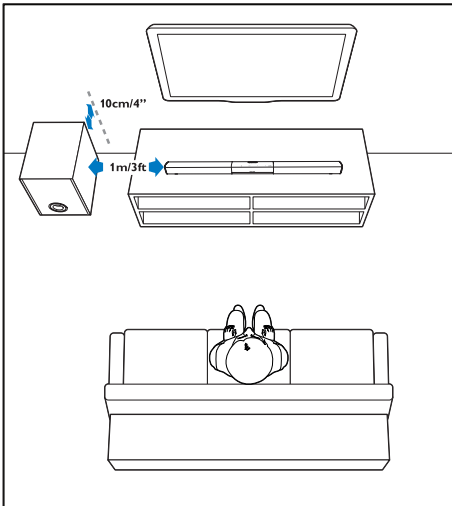
Note

- For identification and supply ratings, see the type plate at the back or bottom of the product.
- Before you make or change any connections, make sure that all devices are disconnected from the power outlet.

Placement

Place the subwoofer at least 1 meter (3 feet) away from this product, and ten centimeters away from the wall.

For best results, place your subwoofer as shown below.



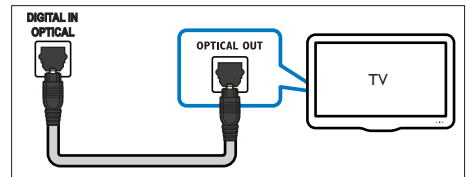
Connect audio from TV and other devices

Play audio from TV or other devices through this product.

Use the best quality connection available on your TV and other devices.

Option 1: Connect audio through a digital optical cable

Best quality audio

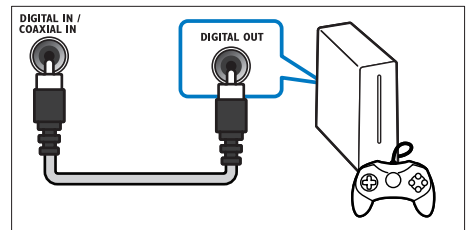


- 1 Using an optical cable, connect the **OPTICAL** connector on this product to the **OPTICAL OUT** connector on the TV or other device.

- The digital optical connector might be labeled **SPDIF** or **SPDIF OUT**.

Option 2: Connect audio through a digital coaxial cable

Best quality audio

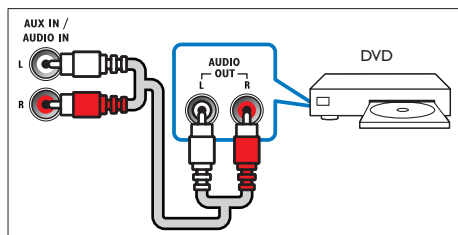


- 1 Using a coaxial cable, connect the **COAXIAL** connector on this product to the **COAXIAL/DIGITAL OUT** connector on the TV or other device.

- The digital coaxial connector might be labeled **DIGITAL AUDIO OUT**.

Option 3: Connect audio through analog audio cables

Basic quality audio



- 1 Using an analog cable, connect the **AUX** connectors on this product to the **AUDIO OUT** connectors on the TV or other device.

4 Use your product

This section helps you use this product to play audio from connected devices.

Before you start

- Make the necessary connections described in the Quick Start Guide or download the User Manual from www.philips.com/support.
- Switch this product to the correct source for other devices.

Adjust the volume

- 1 Press **VOL +/-** to increase or decrease a volume level.
 - To mute sound, press **MUTE**.
 - To restore the sound, press **MUTE** again or press **VOL +/-**.

Choose your sound

This section helps you choose the ideal sound for your video or music.

Surround sound mode

Experience an immersive audio experience with surround sound modes.

- 1 Press **SURR** to toggle between virtual surround and stereo.
 - ↳ When virtual surround is turned on, **ON SURR** scrolls on the display panel.
 - ↳ When stereo sound is turned on, **OFF SURR** scrolls on the display panel.

Note

- Virtual surround is applicable for the audio codecs, such as MP3, PCM and MPEG (except Dolby Digital).

Equalizer

Change the high frequency (treble) and low frequency (bass) settings of this product.

- 1 Press **TREBLE +/-** or **BASS +/-** to change the treble or bass.

Synchronize video and sound

If the audio and video are not synchronized, delay the audio to match the video.

- 1 Press **AUDIO SYNC +/-** to synchronize the audio with the video.
 - **AUDIO SYNC +** increases the sound delay, and **AUDIO SYNC -** decreases the sound delay.

Note

- This feature is only applicable to **COAXIAL (COAX)** and **OPTICAL (OPT)** sources.

Night mode

For quiet listening, night mode decreases the volume of loud sounds when audio is played. Night mode is only available for Dolby Digital soundtracks.

- 1 Press **NIGHT** to turn night mode on or off.
 - ↳ When night mode is turned on, **ON NIGHT** scrolls on the display panel.
 - ↳ When night mode is turned off, **OFF NIGHT** scrolls on the display panel.

MP3 player

Connect your MP3 player to play your audio files or music.

What you need

- An MP3 player.
- A 3.5mm stereo audio cable.

- 1 Using the 3.5mm stereo audio cable, connect the MP3 player to the **AUDIO IN** connector on this product.
- 2 Press **AUDIO IN**.
- 3 Press the buttons on the MP3 player to select and play audio files or music.
 - On the MP3 player, it is recommended to set the volume in the range of 80% maximum volume.

USB storage devices

Enjoy audio on a USB storage device, such as an MP3 player and USB flash memory, etc.

What you need

- A USB storage device that is formatted for FAT or NTFS file systems, and complies with the Mass Storage Class.
- An MP3 file on a USB storage device

- 1 Connect a USB storage device to this product.
- 2 Press **USB** on the remote control.
- 3 Use the remote control to control play.

Button	Action
▶	Start or pause or resume play.
◀/▶	Skip to the previous or next track.
REPEAT	During play, press to toggle: repeat all tracks and repeat off. <ul style="list-style-type: none">• If repeat mode is turned on, ALL RPT scrolls on the display panel.• If repeat mode is turned off, OFF RPT scrolls on the display panel.

Note

- This product may not be compatible with certain types of USB storage device.
- If you use a USB extension cable, USB HUB, or USB multi-reader; the USB storage device may not be recognized.
- Digital camera PTP and MTP protocols are not supported.
- Do not remove the USB storage device while it is being read.
- DRM-protected music files (MP3) are not supported.
- Support a USB port: 5V \pm 0.2V, 1A.

5 Apply factory settings

You can reset this product to the default setting mode.

- 1** In mute mode, quickly press **AUX** two times.
↳ The factory settings is restored.

Auto standby

When playing media from a connected device, this product automatically switches to standby after 15 minutes of button inactivity and no audio play from a connected device.

6 Update software


To get the best features and support, update your product with the latest software.

Check software version

In mute mode (press ) , quickly press **AUX** twice.

- ↳ The current software of this product is displayed for 3 seconds, and then the factory setting is restored.

Update software via USB

- 1 Check the latest software version on www.philips.com/support.
 - Search for your model and click on "Software and drivers".
- 2 Download the software into a USB flash drive.
 - ① Unzip the download if zipped, and make sure that the unzipped file is named "HTL1182.BIN".
 - ② Put the "HTL1182.BIN" file in the root directory of the USB flash drive.
- 3 Switch this product to **AUDIO IN** source (press **AUDIO IN**).
- 4 Connect the USB storage device to the  (**USB**) connector on this product.
- 5 Switch this product to **AUX** source, and then switch this product to **USB** source.
- 6 Wait until the update starts and completes.
 - ↳ When the update starts, "UPG" (upgrade) is displayed on the display panel.
 - ↳ If the update is complete, this product automatically turns off and on again.

Caution

- Do not turn off the power or remove the USB storage device when the software update is in progress because you might damage this product.

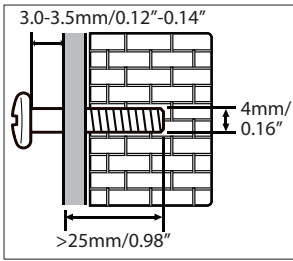
7 Wall mount

Note

- Improper wall mounting may result in accident, injury or damage. If you have any query, contact Consumer Care in your country.
- Before wall mounting, make sure the wall can support the weight of this product.

Screw length/diameter

Depending on the type of wall mounting this product, make sure that you use screws of a suitable length and diameter:



See the illustration in the quick start guide on how to wall mount this product.

- 1) Drill two holes on the wall.
- 2) Secure the dowels and screws in the holes.
- 3) Hang this product on the fastening screws.

8 Product specifications

Note

- Specifications and design are subject to change without notice.

Amplifier

- RMS total output power: 80W RMS (+/- 0.5 dB, 10% THD)
- Frequency response: 40 Hz-20 kHz / +/-3 dB
- Signal-to-noise ratio: > 65 dB (CCIR) / (A-weighted)
- Total Harmonic Distortion: < 1%
- Input sensitivity:
 - AUX: 2 Vrms +/- 100 mV
 - AUDIO IN: 1 Vrms +/- 100 mV

Audio

- S/PDIF Digital audio input:
 - Coaxial: IEC 60958-3
 - Optical: TOSLINK
- Sampling frequency:
 - MP3: 8 kHz, 11 kHz, 12 kHz, 16 kHz, 22 kHz, 24 kHz, 32 kHz, 44.1 kHz, 48 kHz
- Constant bit rate:
 - MP3: 8 kbps-320 kbps

USB

- Compatibility: Hi-Speed USB (2.0)
- Class support: USB Mass Storage Class (MSC)
- File system: FAT16, FAT32, NTFS
- Supports MP3 file formats

Main unit

- Power supply: 100-240 V~, 50/60 Hz
- Power consumption: 35 W
- Standby power consumption: ≤ 0.5 W
- Dimensions (W × H × D):
865 × 67.8 × 85.5 mm
- Weight: 1.8 kg
- **Built-in speakers:** 4 × full range
(54.5 mm/2", 6 ohm)

Subwoofer

- Impedance: 6 ohm
- Speaker drivers: 1 × 134 mm (5.25")
woofer
- Dimensions (W × H × D):
160 × 228 × 295 mm
- Weight: 2.5 kg

Remote control batteries

- 1 × AAA-R03-1.5 V

9 Troubleshooting



Warning

- Risk of electric shock. Never remove the casing of the product.

To keep the warranty valid, never try to repair the product yourself.

If you have problems using this product, check the following points before you request service.

If you still have a problem, get support at www.philips.com/support.

Main unit

The buttons on this product do not work.

- Disconnect this product from the power supply for a few minutes, then reconnect.

Sound

No sound from the speakers of this product.

- Connect the audio cable from this product to your TV or other devices.
- Reset this product to its factory settings.
- On the remote control, select the correct audio input.
- Make sure that this product is not muted.

Distorted sound or echo.

- If you play audio from the TV through this product, make sure that the TV is muted.

Audio and video are not synchronized.

- Press **AUDIO SYNC +/-** to synchronize the audio with the video.



Manufactured under license from Dolby Laboratories. Dolby and the double-D symbol are trademarks of Dolby Laboratories.



Specifications are subject to change without notice
2015 © Gibson Innovations Limited. All rights reserved.

This product has been manufactured by, and is sold under the responsibility of WOOX Innovations (Shanghai) Commercial Company Ltd., and WOOX Innovations (Shanghai) Commercial Company Ltd., is the warrantor in relation to this product.

Philips and the Philips Shield Emblem are registered trademarks of Koninklijke Philips N.V. and are used under license from Koninklijke Philips N.V.

