

始终如一地为您提供帮助

在以下网站上注册产品并获得支持

www.philips.com/support



HTL1180B



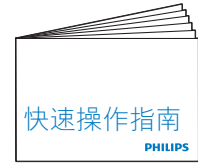
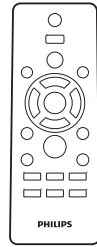
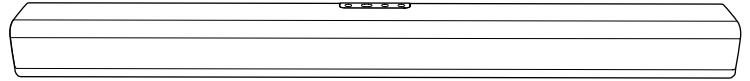
快速操作指南

PHILIPS



ZH-CN 使用产品前，请阅读所有随附的安全信息

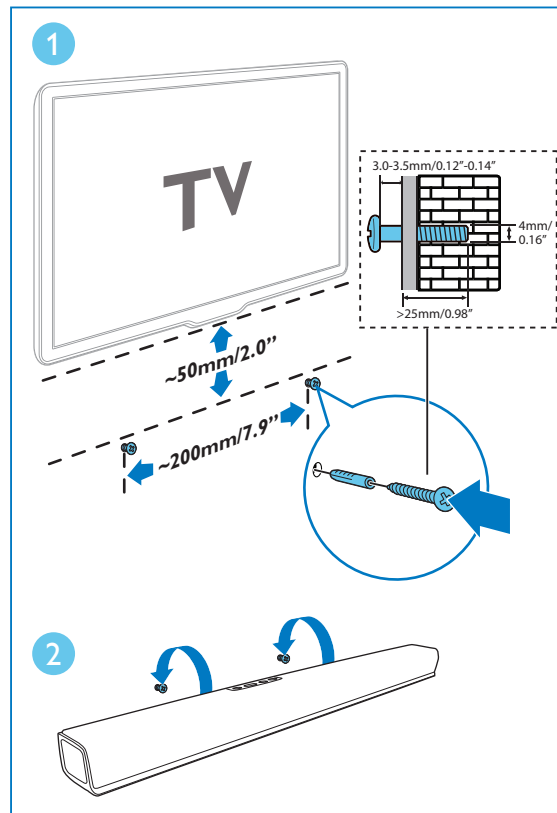
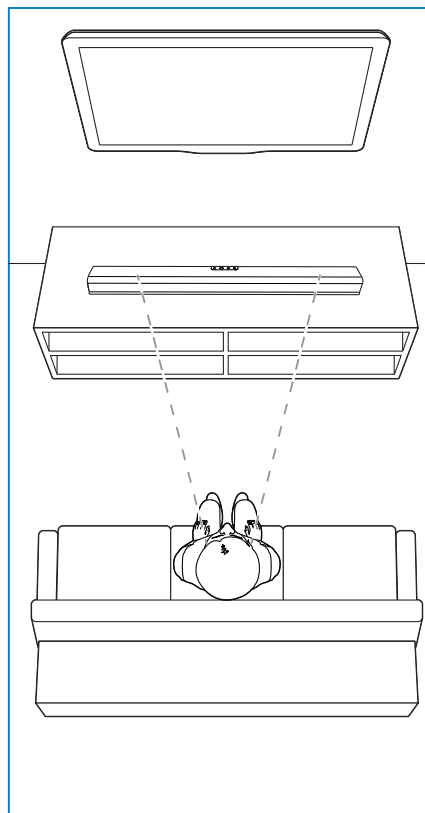
EN Before using your product, read all accompanying safety information



1

ZH-CN 摆放本产品
将本产品挂置墙上
(自选)

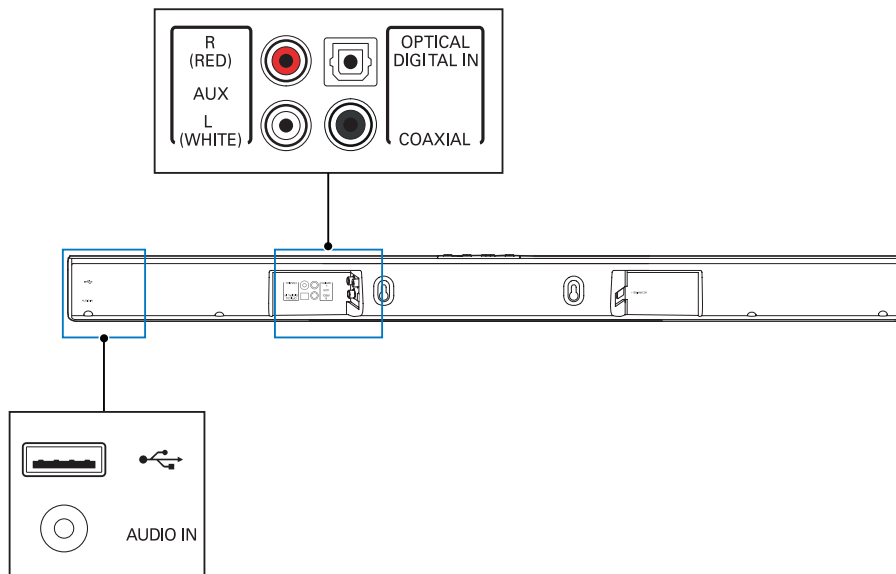
EN Position this product
Wall mount this product
(optional)



2

ZH-CN 连接本产品

EN Connect this product



3

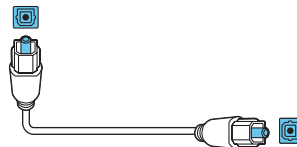
ZH-CN 选择以下一种连接方式连接电视
(需将电视静音)

EN Hear audio from TV in one of the following ways
(Mute your TV)

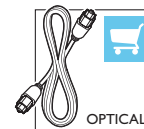
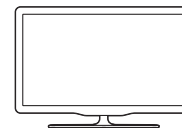
OPTICAL



OPTICAL
DIGITAL IN



OPTICAL OUT

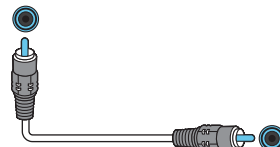


OPTICAL

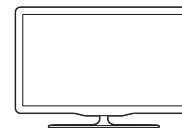
COAXIAL



COAXIAL



COAXIAL OUT

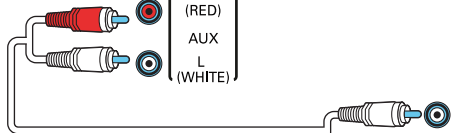


COAXIAL

AUDIO L/R



R
(RED)
AUX
L
(WHITE)



AUDIO OUT

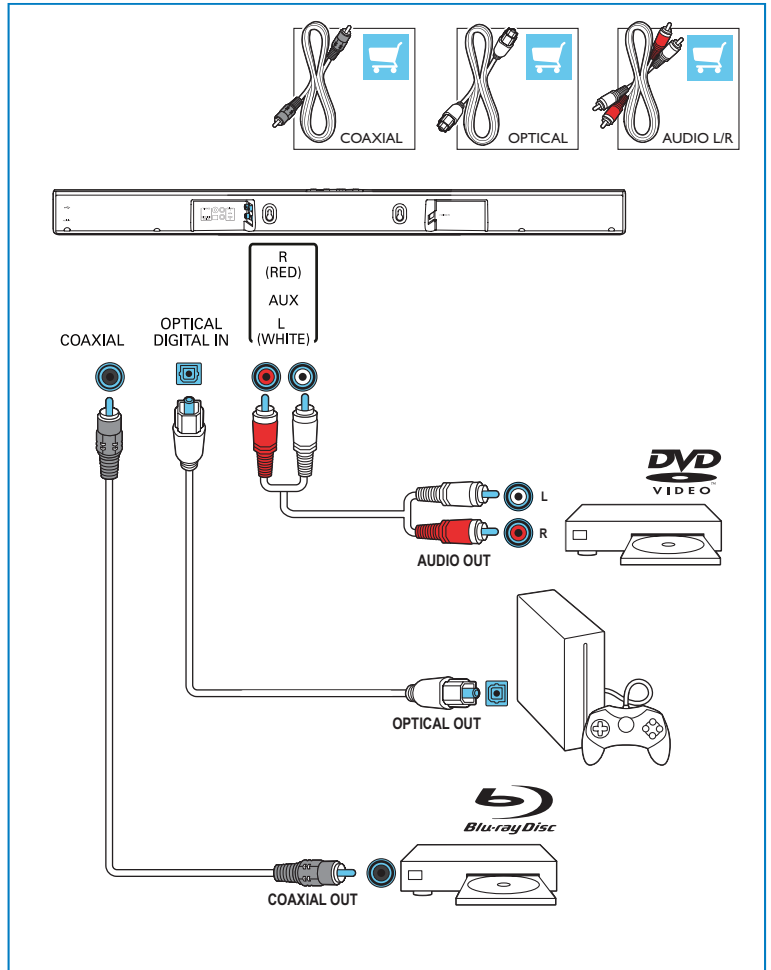


AUDIO L/R

4

ZH-CN 通过本产品收听其它设备的音频

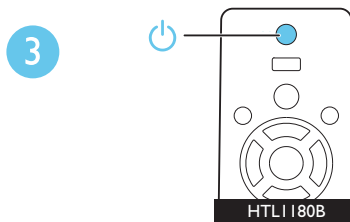
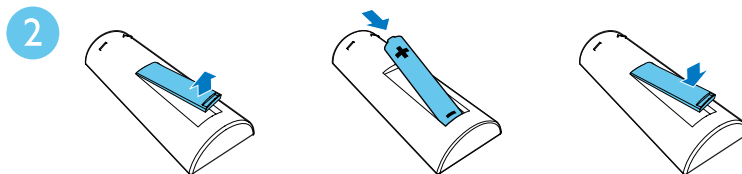
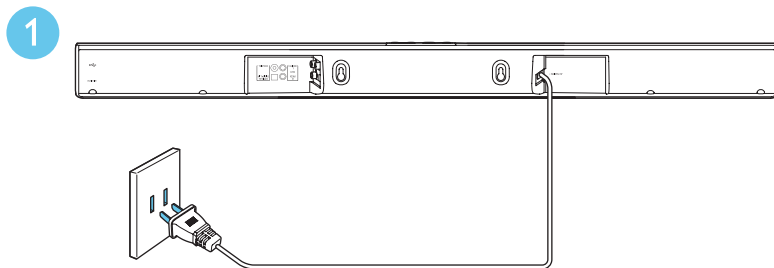
EN Enjoy audio from your devices



5

ZH-CN 开机

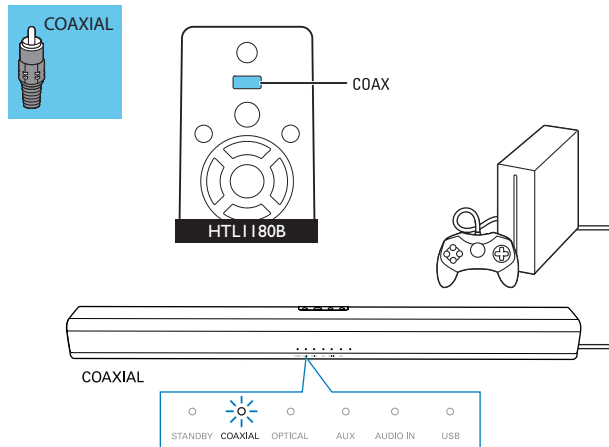
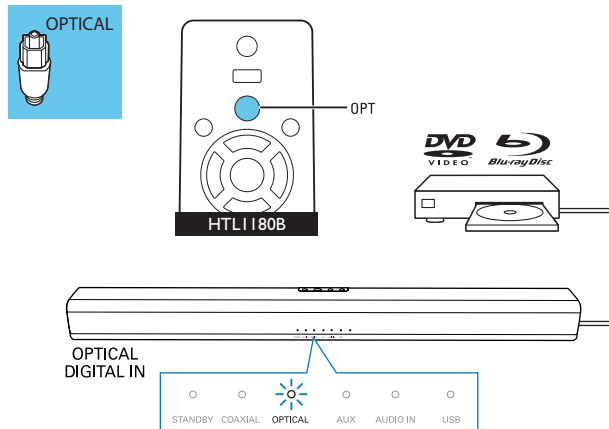
EN Switch on this product

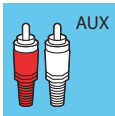


6

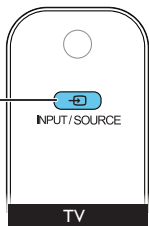
ZH-CN 选择正确的音频输入源

EN Select the correct audio source



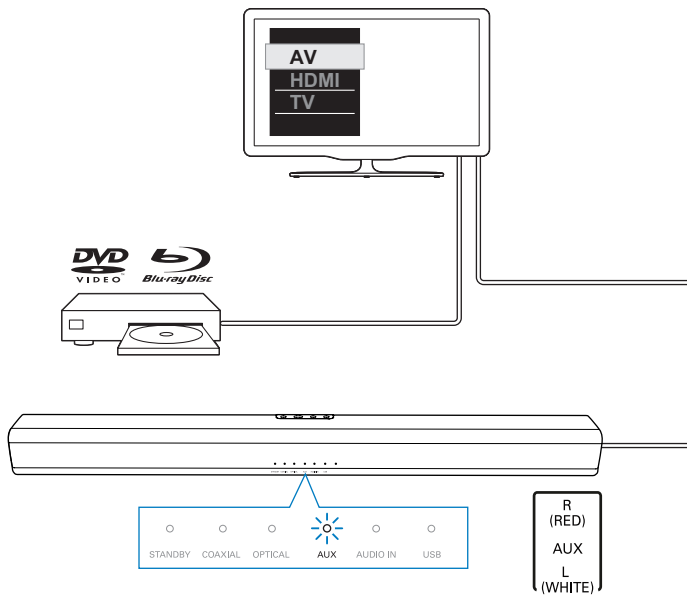
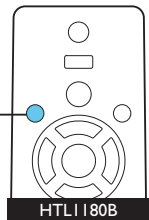


1



2

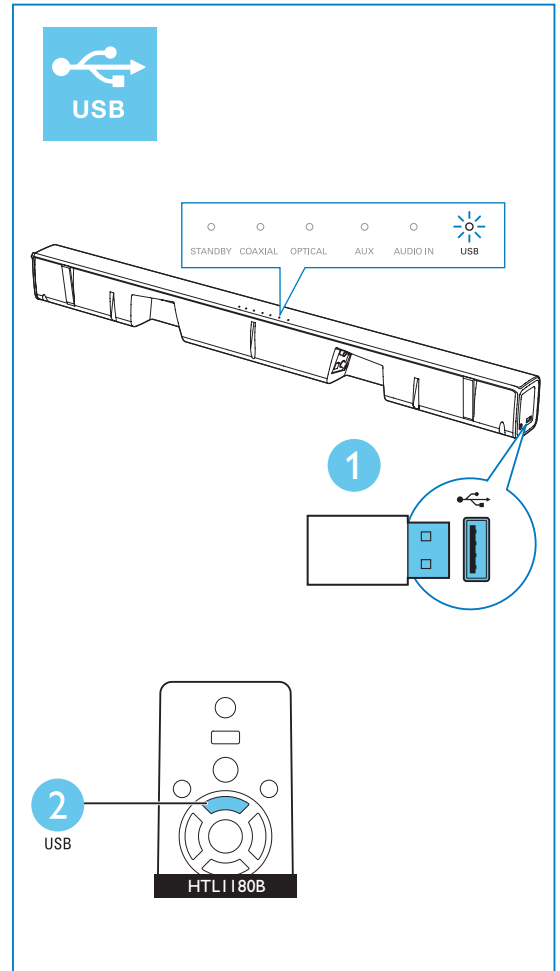
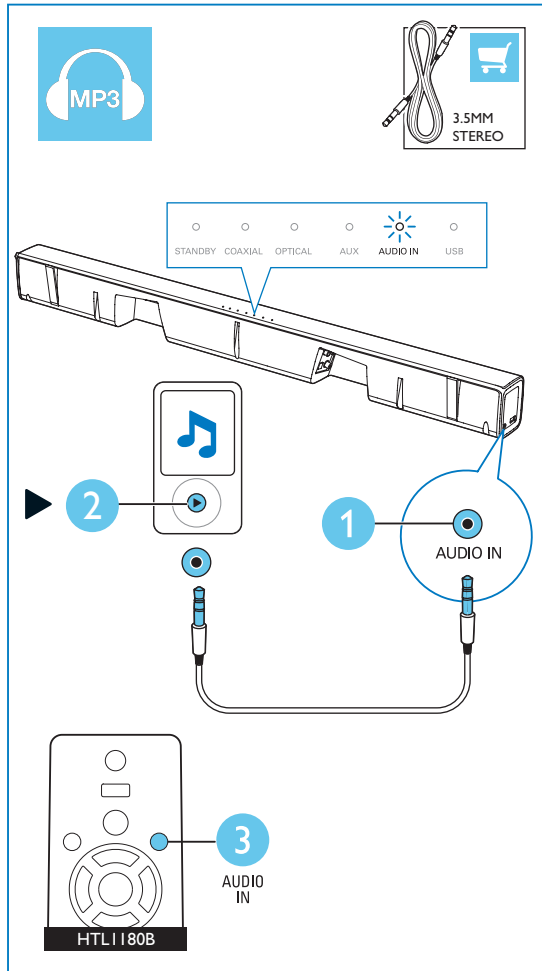
AUX



7

ZH-CN 播放其它设备

EN Play other devices





ZH-CN 访问 www.philips.com/support 更详尽地了解本产品

EN For more information about using this product, visit www.philips.com/support



www.philips.com/support



Specifications are subject to change without notice

2015 © Gibson Innovations Limited. All rights reserved.

This product has been manufactured by, and is sold under the responsibility of WOOX Innovations (Shanghai) Commercial Company Ltd., and WOOX Innovations (Shanghai) Commercial Company Ltd., is the warrantor in relation to this product.

Philips and the Philips Shield Emblem are registered trademarks of Koninklijke Philips N.V. and are used under license from Koninklijke Philips N.V.

HTL1180B_93_QSG_V2.0

