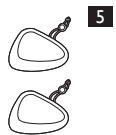
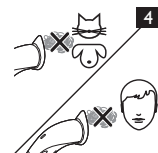
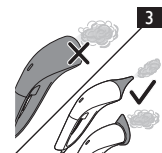


Register your product and get support at
请登录以下网址并得到相应的帮助


www.philips.com/welcome



PHILIPS



www.philips.com

 100% recycled paper
100% 循环再造纸

4222.003.3708.4

ENGLISH

Introduction

Congratulations on your purchase and welcome to Philips!
To fully benefit from the support that Philips offers, register your product at www.philips.com/welcome.

Important

Read this important information carefully before you use the appliance and save it for future reference.

Danger

- Never immerse the appliance in water or any other liquid, nor rinse it under the tap, except for the parts that can be removed for cleaning according to the instructions.
- Beware of hot steam that comes out of the appliance. Steam may cause scalding (Fig. 1).
- To avoid a hazard, do not move the appliance over its own mains cord or the mains cords of other appliances.
- Beware of the hot stove. Make sure the stove has cooled down sufficiently before you start to clean it.

Warning

- Check if the voltage indicated on the appliance corresponds to the local mains voltage before you connect the appliance.
- Do not use the appliance if the plug, the mains cord or the appliance itself shows visible damage, or if the appliance has been dropped or leaks.
- Always return the appliance to a service centre authorised by Philips for examination or repair. Do not attempt to repair the appliance yourself, otherwise the guarantee becomes invalid.
- If the mains cord is damaged, you must have it replaced by Philips, a service centre authorised by Philips or similarly qualified persons in order to avoid a hazard.
- Never leave the appliance unattended when it is connected to the mains.
- This appliance can be used by persons with reduced physical, sensory or mental capabilities or lack of experience and knowledge if they have been given supervision or instruction concerning use of the appliance in a safe way and understand the hazards involved.
- Care must be taken to ensure that children do not play with the appliance.
- Keep the appliance and its mains cord out of reach of children.
- The surfaces, including nozzles and pads, can become extremely hot and may cause burns if touched during use (Fig. 2).
- The water tank has a capacity of 75ml. Never fill the water tank with more than this amount.
- Never store the appliance at a temperature lower than 0°C.
- Never direct the hot steam from the appliance at people or pets (Fig. 3).
- Never direct the hot steam from the appliance at equipment containing electrical components such as the interior of ovens.
- Do not open the water tank cap when the appliance is operating.

Caution

- Only connect the appliance to an earthed wall socket.
- Do not use the appliance on the same spot too long, as this may damage the surface.
- Do not use the appliance to clean wood or laminate surfaces without a water-resistant or heat-resistant top coat or whose water-resistant or heat-resistant top coat is damaged. The steam may remove the sheen of wax-treated wooden surfaces. Always test an area out of direct view to make sure the surface can be cleaned with hot steam. We also advise you to check the maintenance instructions from the surface manufacturer.
- Temperature shocks can cause glass to break.
- When the appliance is switched off, some steam may still come out. This is normal. When you have finished steam cleaning, always switch off and unplug the appliance and let it cool down for 60 minutes before you store it.
- This appliance is intended for indoor household use only.
- Steam may damage or cause discolouration of certain surfaces.
- Noise level: Lc = 71 dB(A)

Type of water to be used

- To ensure a longer life for your appliance, use demineralised water in the water tank. This prevents fast scale build-up, especially in areas with hard tap water.
- Do not put detergents, perfume, vinegar, starch, descaling agents, ironing aids or other chemicals in the water tank, as your appliance is not designed to work with these chemicals.

Electromagnetic fields (EMF)

This Philips appliance complies with all applicable standards and regulations regarding exposure to electromagnetic fields.

Ordering accessories

To buy accessories or spare parts, visit www.shop.philips.com/service or go to your Philips dealer. You can also contact the Philips Consumer Care Centre in your country (see the worldwide guarantee leaflet for contact details).

- You can order a set of new pads under type number FC8055 (Fig. 4).

Recycling

- Do not throw away the product with the normal household waste at the end of its life, but hand it in at an official collection point for recycling. By doing this, you help to preserve the environment.

Guarantee and service

If you need service or information or if you have a problem, please visit the Philips website at www.philips.com/support or contact the Philips Consumer Care Centre in your country. You find its phone number in the worldwide guarantee leaflet. If there is no Consumer Care Centre in your country, go to your local Philips dealer.

Troubleshooting

This chapter summarises the most common problems you could encounter with the appliance. If you are unable to solve the problem with the information below, visit www.philips.com/support for a list of frequently asked questions or contact the Consumer Care Centre in your country.

Problem	Cause	Solution
The appliance does not produce any steam.	The appliance has not heated up sufficiently.	Let the appliance heat up for approx. 45 seconds. When the 'appliance ready' light burns blue continuously, the appliance is ready for use.
	You have not pressed the steam trigger fully.	Press the steam trigger fully. The appliance only produces steam when you press the steam trigger fully.
	The water level in the water tank is too low.	Unplug the appliance and refill the water tank.
	The water tank is not in place.	Insert the water tank properly.
	Under certain conditions, the appliance may stop producing steam, even though the water tank still contains water.	Hold the appliance upside down to let water flow into the steam chamber. The appliance starts to produce steam again and you can continue steam cleaning.
Water droplets drip from the steamer head.	The appliance has not heated up sufficiently.	Let the appliance heat up for approx. 45 seconds. When the 'appliance ready' light burns blue continuously, the appliance is ready for use.
The appliance produces a pumping sound/ the handle vibrates.	Water is pumped to the steamer head to be converted into steam.	This is normal.
	Under certain conditions, the appliance may stop producing steam, even though the water tank still contains water.	Hold the appliance upside down to let water flow into the steam chamber. The appliance starts to produce steam again and you can continue steam cleaning.
The appliance does not heat up.	There is a connection problem.	Check if the mains plug is inserted properly in the wall socket and if the wall socket is working properly.
The blue 'appliance ready' light goes on from time to time during steam cleaning.	This indicates that the appliance is heating up again.	This is normal.

简介

感谢您的惠顾，欢迎光临飞利浦！为了您能充分享受飞利浦提供的支持，请在 www.philips.com/welcome 上注册您的产品。

注意事项

使用产品之前，请仔细阅读本重要信息，并妥善保管以供日后参考。

危险

- 不要将本产品浸入水或其它液体中，也不要在水龙头下冲洗，根据说明可以拆卸下来进行清洗的部件除外。
- 小心产品中排出的热蒸汽。蒸汽可能会导致烫伤。(图 1)
- 切勿在本产品的电源线或其他产品的电源线上移动本产品，以免发生危险。
- 炉具很热，请小心。清洁炉具前，请确保炉具已充分冷却。

警告

- 在将产品连接电源之前，请先检查产品所标电压与当地的供电电压是否相符。
- 如果插头、电源线或产品本身已经明显损坏，或产品曾坠落或出现渗漏，请勿再使用产品。
- 产品只能送到由飞利浦授权的维修中心检修。不要自己修理产品，否则产品维修保证书将会无效。
- 如果电源线损坏，为了避免危险，必须由飞利浦、飞利浦特约维修中心或有同等维修资格的专业人员来进行更换。
- 电源接通期间，使用者不得离开。
- 本产品适合由肢体不健全、感觉或精神上有障碍或缺乏相关经验和知识的人士使用，但前提是有人对他们使用本产品进行监督或指导，以确保他们安全使用，并且让他们明白相关的危害。
- 请务必小心，确保儿童不玩耍本产品。
- 将产品和电源线放在儿童接触不到的地方。
- 喷嘴和垫子等表面在使用过程中会变得非常烫，触摸可能会导致烫伤。(图 2)
- 水箱容量为 75 毫升。切勿向水箱中注入多于此水量的水。
- 切勿将本产品存放在 0°C 以下的环境中。
- 不要将产品产生的热蒸汽直接对着他人或宠物。(图 3)
- 不要将产品产生的热蒸汽从垫架上直接对着含有电子元件的设备，如电烤箱内部。
- 请勿在产品运行时打开水箱盖。

注意

- 产品只能使用带接地线的插座。
- 切勿让本产品在同一地点使用过长时间，否则会损坏地板。
- 请勿使用本产品清洁没有防水表面涂层或耐热表面涂层，或防水表面涂层或耐热表面涂层已损坏的本地板或强化木地板。蒸汽可能会去除已打蜡木地面的光彩。请务必在隐蔽的区域进行测试，以确保地板可以用热蒸汽来清洁。我们也建议您查看地板制造商的保养说明。
- 温度骤变会导致玻璃破裂。

- 产品关闭后可能仍会有一些蒸汽冒出。这是正常现象。做完蒸汽清洁后，请务必关闭产品并拔下插头，待其冷却 60 分钟后再存放。
- 本产品仅限于室内使用。
- 蒸汽可能损坏或导致某些表面褪色。
- 噪音强度：Lc = 71 dB(A)

应使用的水质类型

- 为确保本产品有更长的使用寿命，请在水箱中使用软化水。这可防止水垢快速积聚，尤其是在自来水水质较硬的区域。
- 切勿将清洁剂、香水、醋、淀粉、除垢剂、烫衣剂或其它化学品注入水箱内，因为您的产品不适合使用这些化学品。

电磁场 (EMF)

本飞利浦产品符合所有有关暴露于电磁场的适用标准和法规。

订购附件

- 要购买附件和备件，请访问 www.shop.philips.com/service 或请联系飞利浦经销商。您也可以联系您所在国家/地区的飞利浦客户服务中心（联系详情，请参阅全球保修卡）。
- 您可以订购一套全新的垫子，供应型号为 FC8055。(图 4)

回收

- 弃置产品时，请不要将其与一般生活垃圾堆放在一起；应将其交给官方指定的回收点。这样做有利于环保。

保修与服务

如果您需要服务或信息，或者有任何疑问，请访问飞利浦网站：www.philips.com/support。您也可与您所在国家/地区的飞利浦客户服务中心联系（可从全球保修卡中找到其电话号码）。如果您所在的国家/地区没有飞利浦客户服务中心，请与当地的飞利浦经销商联系。

故障种类和处理方法

本章归纳了使用本产品时最常见的一些问题。如果您无法根据以下信息解决问题，请访问 www.philips.com/support 查阅常见问题列表，或联系您所在国家/地区的客户服务中心。

问题	原因	解决方法
蒸汽挂烫机不能产生蒸汽	产品未充分加热。	让产品加热约 45 秒钟。“产品就绪”指示灯呈蓝色持续亮起时，则表示产品已准备就绪，可以开始使用。
	您没有完全按下蒸汽开关。	完全按下蒸汽开关。只有这样，本产品才能产生蒸汽。
	水箱中的水位太低。	拔掉产品的电源插头，然后为水箱加水。
	水箱没有放好。	请正确插入水箱。
	在某些情况下，尽管水箱中有水，本产品也有可能停止产生蒸汽。	请倒置产品，让水流入蒸汽室。产品即可重新开始产生蒸汽，方便您继续蒸汽清洁。
有水滴从蒸汽喷头中滴出。	产品未充分加热。	让产品加热约 45 秒钟。“产品就绪”指示灯呈蓝色持续亮起时，则表示产品已准备就绪，可以开始使用。
产品会产生抽水声/手柄震动。	水被抽到蒸汽喷头以转化为蒸汽。	这是正常的。

问题	原因	解决方法
	在某些情况下，尽管水箱中有水，本产品也有可能停止产生蒸汽。	请倒置产品，让水流入蒸汽室。产品即可重新开始产生蒸汽，方便您继续蒸汽清洁。
产品不能加热。	接触不良。	检查电源插头是否正确插入电源插座，以及电源插座是否正常工作。
蓝色“产品就绪”指示灯在蒸汽清洁过程中时亮时灭。	这表示产品正在重新加热。	这是正常的。

PHILIPS

产品 : 飞利浦多功能蒸汽清洁器
型号 : FC7012
额定电压 : 220V~
额定频率 : 50Hz
额定输入功率: 1000 W
生产日期 : 请见产品本体
产地 : 中国广东惠州

飞利浦（中国）投资有限公司
 上海市天目西路218号1602-1605
 全国顾客服务热线：4008 800 008

本产品根据国标 GB4706. 1-2005,
 GB4706. 61-2008制造

PHILIPS

产品 : 飞利浦多功能蒸汽清洁器
型号 : FC7008
额定电压 : 220V~
额定频率 : 50Hz
额定输入功率: 840 W
生产日期 : 请见产品本体
产地 : 中国广东惠州

飞利浦（中国）投资有限公司
 上海市天目西路218号1602-1605
 全国顾客服务热线：4008 800 008

本产品根据国标 GB4706. 1-2005,
 GB4706. 61-2008制造

PHILIPS

产品 : 飞利浦多功能蒸汽清洁器
型号 : FC7010
额定电压 : 220V~
额定频率 : 50Hz
额定输入功率: 840 W
生产日期 : 请见产品本体
产地 : 中国广东惠州

飞利浦（中国）投资有限公司
 上海市天目西路218号1602-1605
 全国顾客服务热线：4008 800 008

本产品根据国标 GB4706. 1-2005,
 GB4706. 61-2008制造

保留备用

发行日期：10/09/2015