

Register your product and get support at  
请登录以下网址并得到相应的帮助  
[www.philips.com/welcome](http://www.philips.com/welcome)

*MultiSteam*

FC7012, FC7010, FC7008



User manual  
用户手册

**PHILIPS**



2



3



4



5



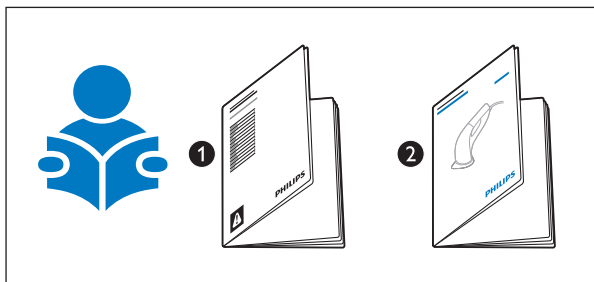
7

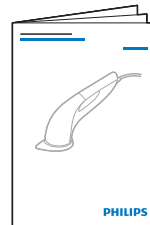
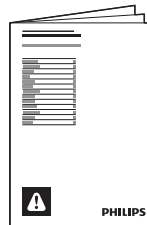
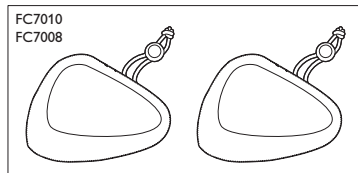
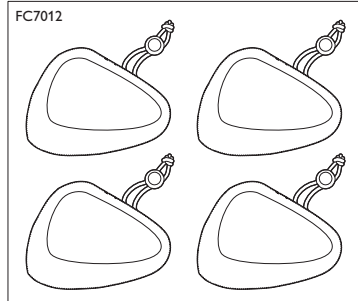
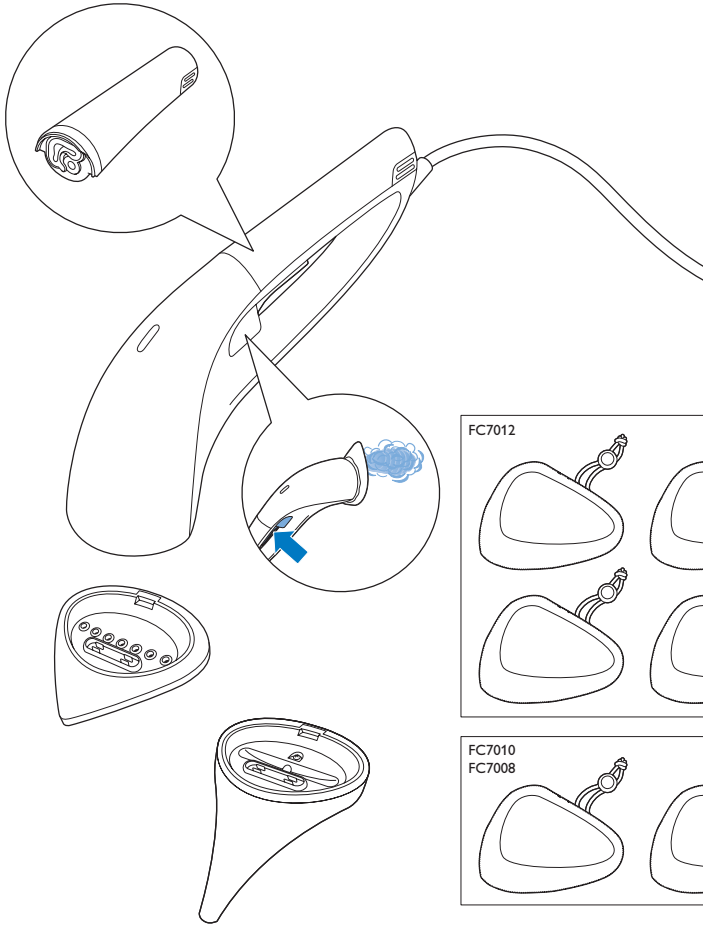


8



8

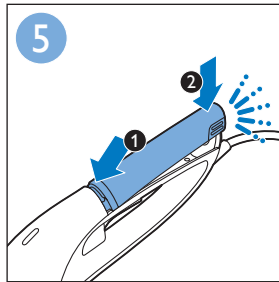
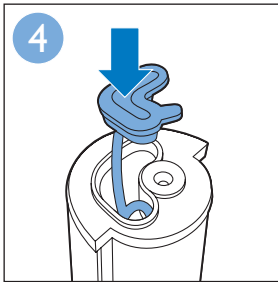
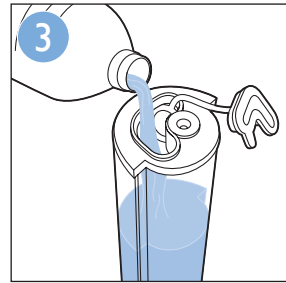
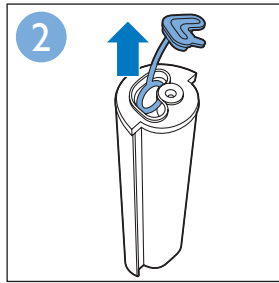
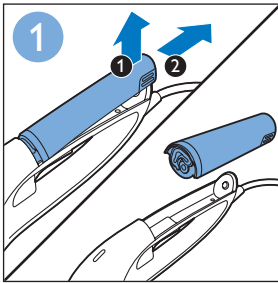






**EN** To ensure a longer life for your appliance, use demineralised water in the water tank. This prevents fast scale build-up, especially in areas with hard tap water. Do not put detergents, perfume, vinegar, starch, descaling agents, ironing aids or other chemicals in the water tank, as your appliance is not designed to work with these chemicals.

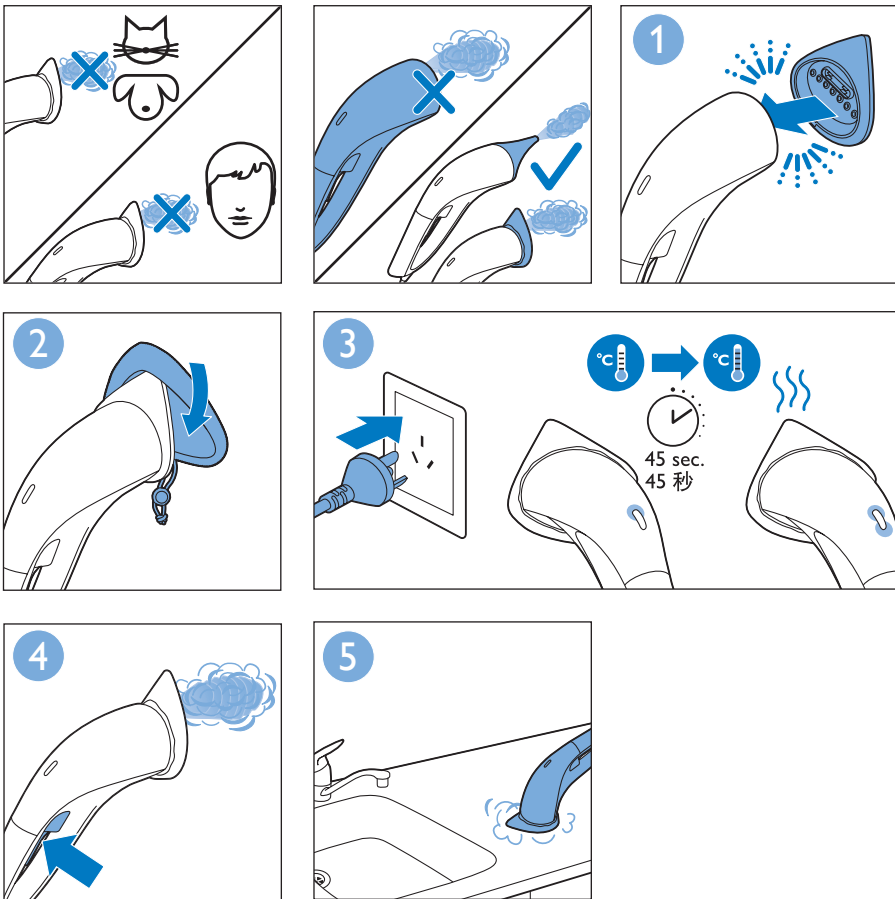
**ZH-CN** 为确保本产品有更长的使用寿命，请在水箱中使用软化水。这可防止水垢快速积聚，尤其是在自来水水质较硬的区域。切勿将清洁剂、香水、醋、淀粉、除垢剂、烫衣剂或其它化学品注入水箱内，因为您的产品不适合使用这些化学品。

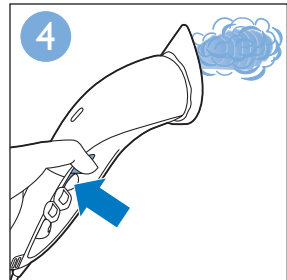
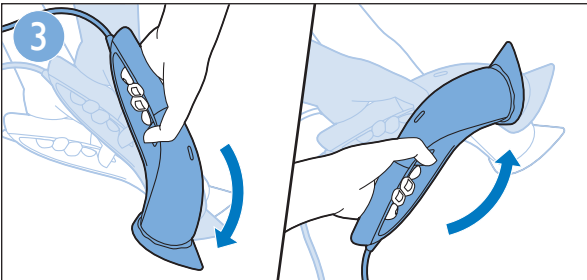
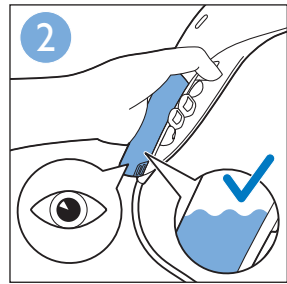
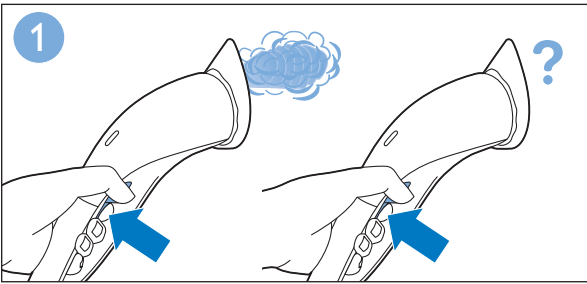
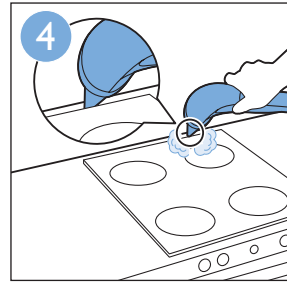
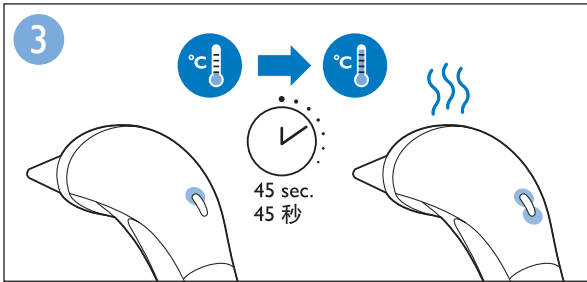
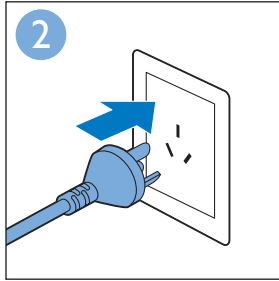




**EN** The white power-on light goes on when the appliance is plugged in and the appliance starts heating up. When the appliance is ready for use, the blue 'appliance ready' light goes on.  
 Note: The blue 'appliance ready' light goes on from time to time during steaming. This indicates that the appliance is heating up again.

**ZH-CN** 当蒸汽清洁器接入电源并开始加热时，白色电源指示灯将亮起。当蒸汽清洁器准备就绪时，蓝色指示灯将亮起。注意：蓝色指示灯在蒸汽清洁过程中时亮时灭。这表示蒸汽清洁器正在再次加热。

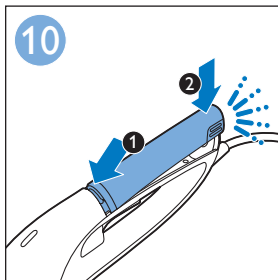
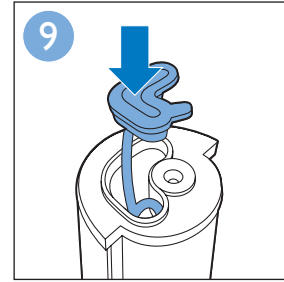
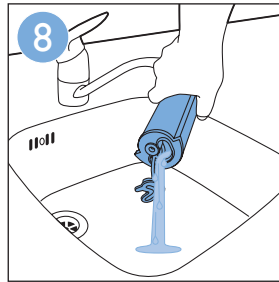
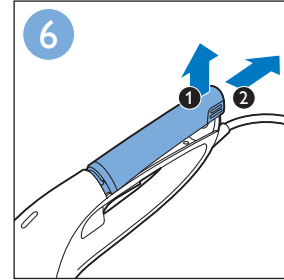
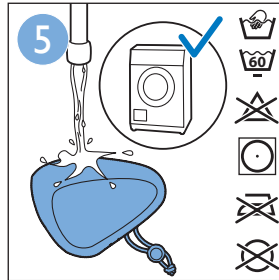
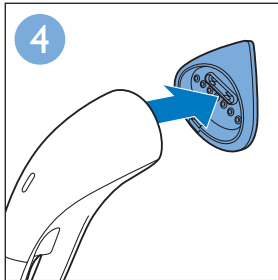
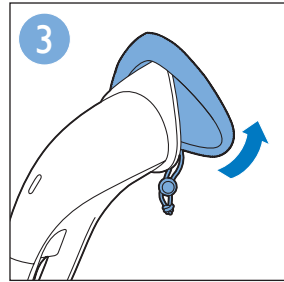
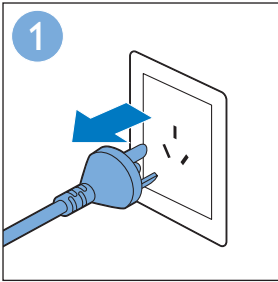


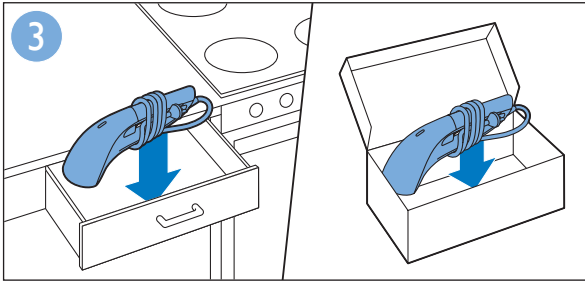
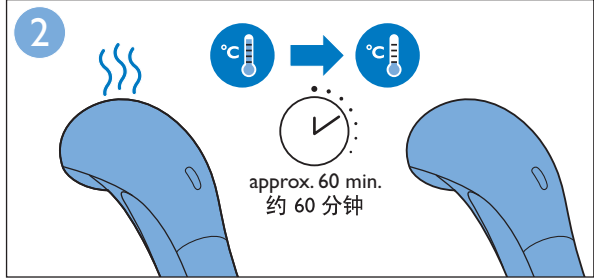
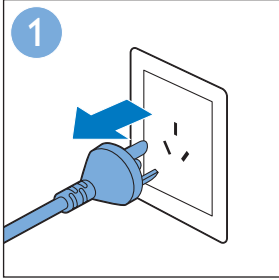




EN Note: Never use scouring pads, abrasive cleaning agents or aggressive liquids such as alcohol, petrol or acetone to clean the appliance.

ZH-CN 注意：切勿使用钢丝绒、研磨性清洁剂或腐蚀性液体（例如酒精、汽油或丙酮）来清洁产品。





[www.philips.com](http://www.philips.com)

 100% recycled paper  
100% papier recyclé  
100% 循环再造纸

4222.003.3707.2