

Always there to help you

Register your product and get support at
www.philips.com/support



HTL2111A



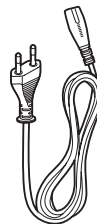
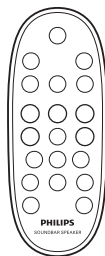
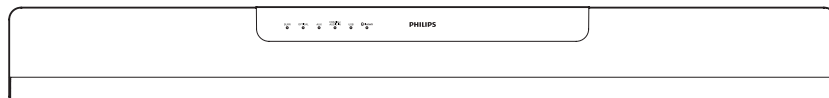
Quick start guide

PHILIPS



EN Before using your product, read all accompanying safety information

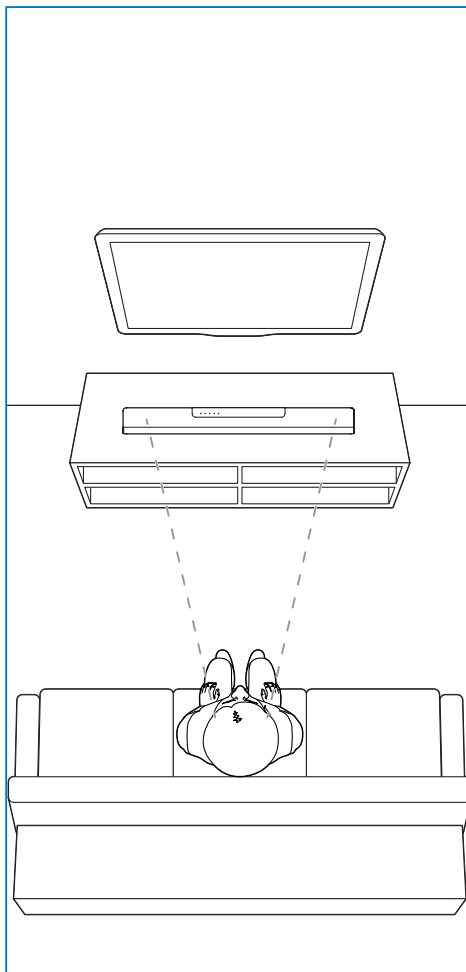
KO 제품을 사용하기 전에 제공된 모든 안전 정보를 숙지하십시오.



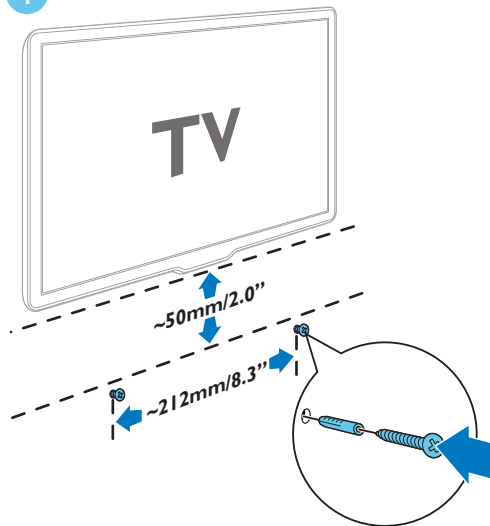
1

EN Position the SoundBar
Wall mount the SoundBar (optional)

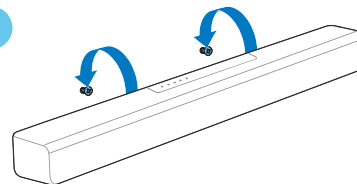
KO 사운드바 배치
사운드바 벽에 부착(옵션)



1



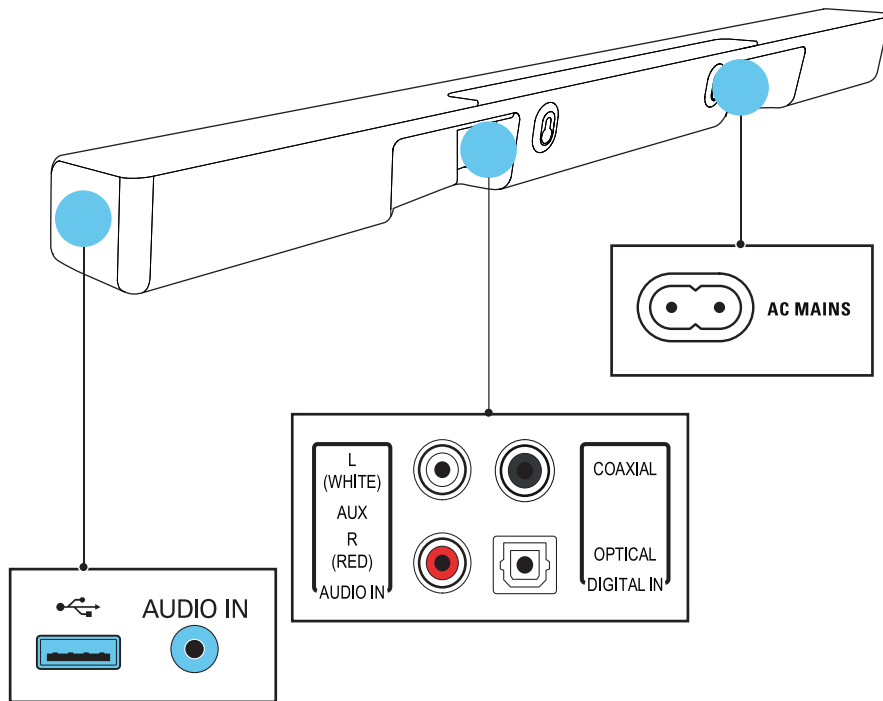
2



2

EN Connect the SoundBar

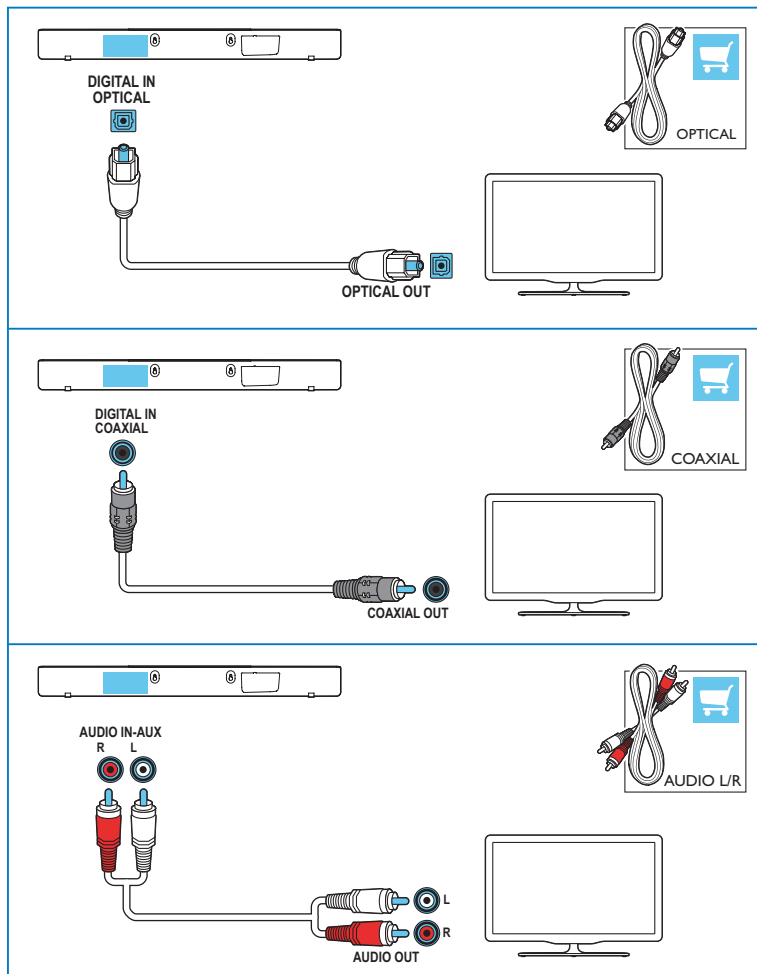
KO 사운드바 연결



3

EN Hear audio from TV in one of the following ways
(Mute your TV)

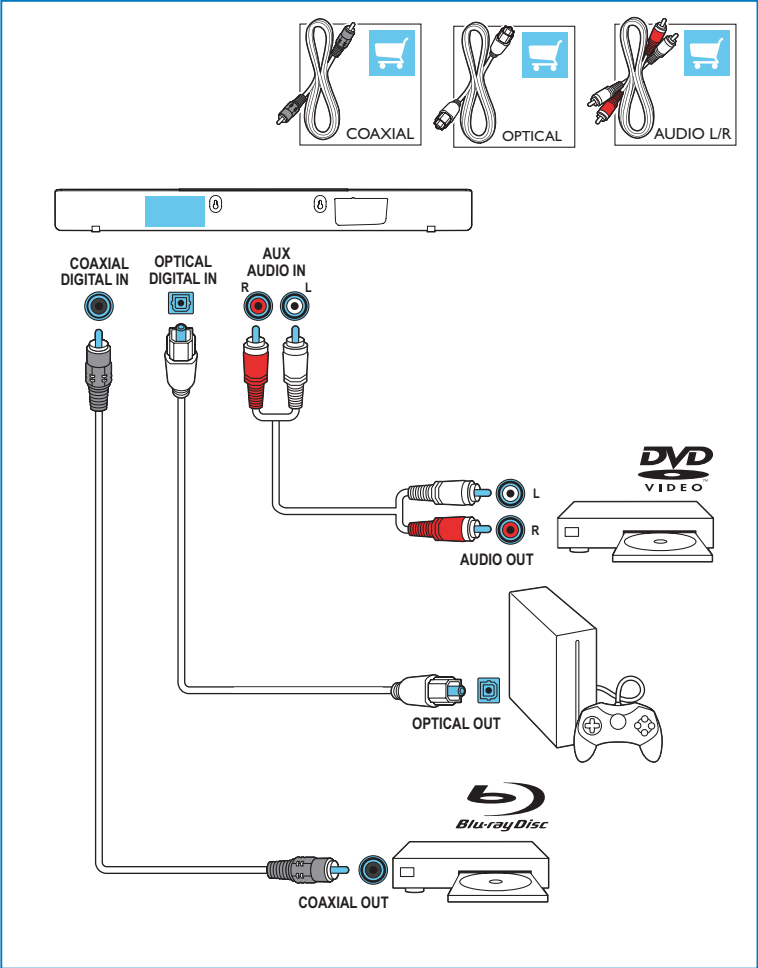
KO 다음 중 한 가지 방법으로 TV 오디오 청취 (TV
음소거)



4

EN Enjoy audio from your devices

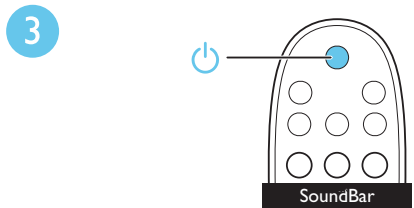
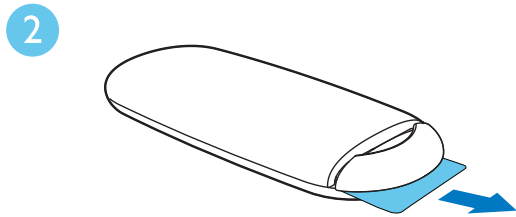
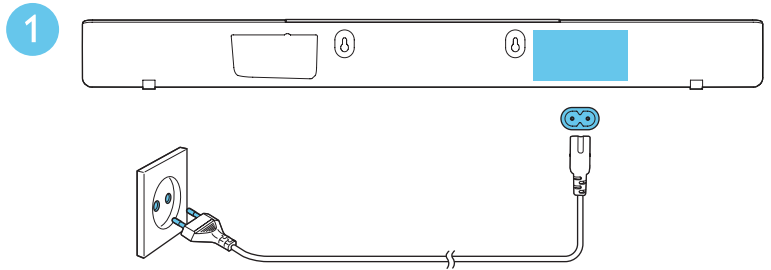
KO 장치를 통한 오디오 청취



5

EN Switch on the SoundBar

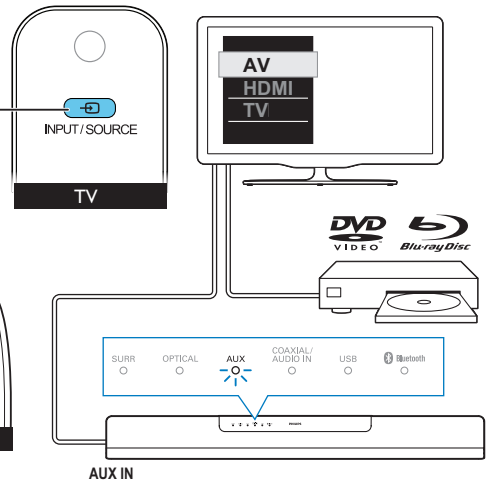
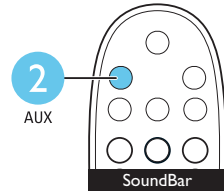
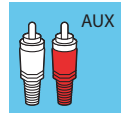
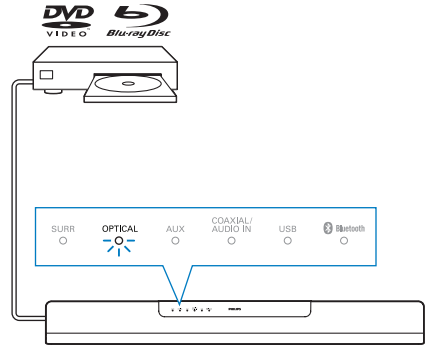
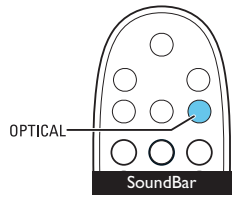
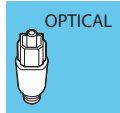
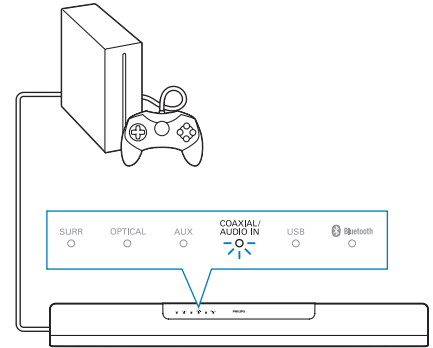
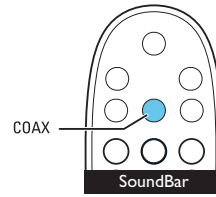
KO 사운드바 켜기



6

EN Select the correct audio source

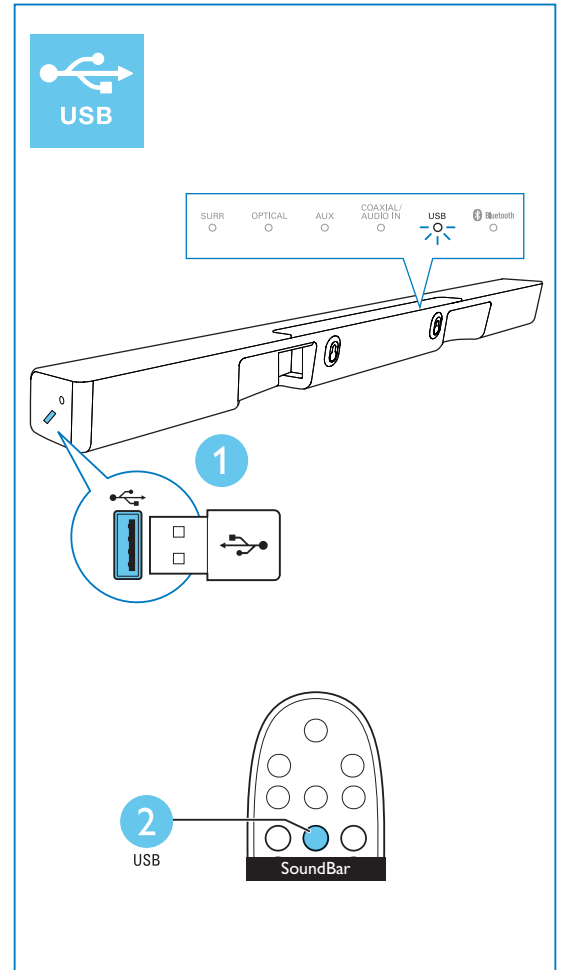
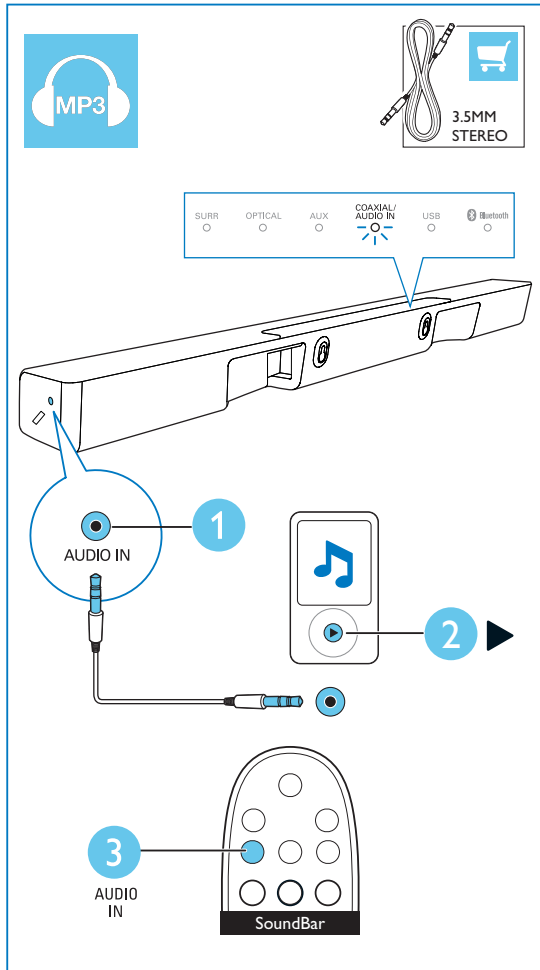
KO 정확한 음원 선택



7

EN Play other devices

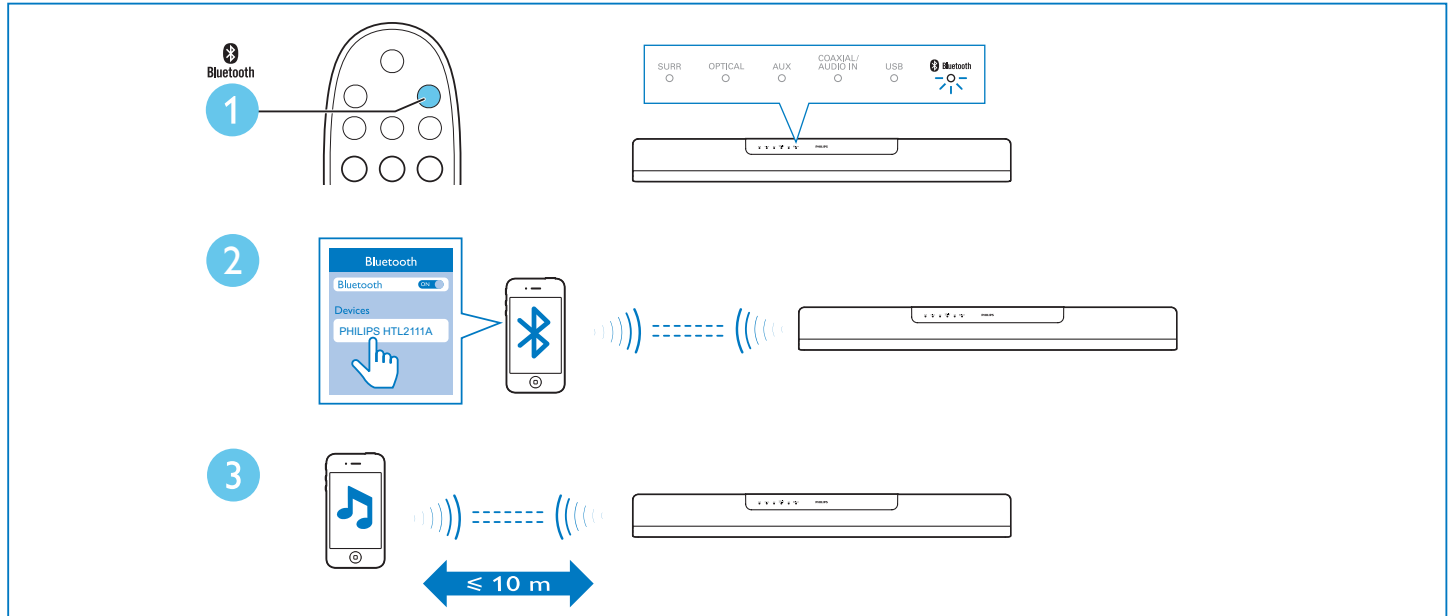
KO 기타 장치 재생



8

EN Play audio through Bluetooth

KO Bluetooth를 통한 오디오 재생





EN For more information about using this product, visit www.philips.com/support

KO 본 제품의 자세한 사용 방법을 확인하려면 www.philips.com/support를 방문하십시오.



www.philips.com/support



Manufactured under license from Dolby Laboratories. Dolby and the double-D symbol are trademarks of Dolby Laboratories.



The Bluetooth® word mark and logos are registered trademarks owned by Bluetooth SIG, Inc. and any use of such marks by WOOX Innovations is under license. Other trademarks and trade names are those of their respective owners.



Specifications are subject to change without notice

2014 © WOOX Innovations Limited. All rights reserved.

Philips and the Philips' Shield Emblem are registered trademarks of Koninklijke Philips N.V. and are used by WOOX Innovations Limited under license from Koninklijke Philips N.V.

HTL2111A_61_QSG_V1.0

