



CoreLine Waterproof

WT120C LED34S/840 PSD L1500

Coreline Waterproof - LED Module, system flux 3400 lm - 840 neutral white - Power supply unit with DALI interface

Whether for a new building or renovation of an existing space, customers want lighting solutions that provide quality of light and substantial energy and maintenance savings. The new CoreLine Waterproof range of LED products can be used to replace traditional waterproof luminaires with fluorescent lamps. The process of selecting, installing and maintaining is so easy – it's a simple switch.

Product data

General Information		Flammability mark	
Number of light sources	1 [1 pc]	CE mark	F [For mounting on normally flammable surfaces]
Lamp family code	LED34S [LED Module, system flux 3400 lm]	ENEC mark	CE mark
Light source colour	840 neutral white	UL mark	ENEC mark
Light source replaceable	No	Constant light output	No
Number of gear units	1 unit	Number of products on MCB	No
Driver/power unit/transformer	PSD [Power supply unit with DALI interface]	RoHS mark	24
Driver included	Yes	Product Family Code	RoHS mark
Optic type	No [-]		WT120C [Coreline Waterproof]
Optical cover/lens type	PC [Polycarbonate bowl/cover]	Operating and Electrical	
Luminaire light beam spread	110°	Input voltage	220 to 240 V
Emergency lighting	No [-]	Input frequency	50 to 60 Hz
Control interface	DALI	Inrush current	21 A
Connection	PI [Push-in connector 3-pole]	Inrush time	0.280 ms
Cable	-	Power factor (min.)	0.9
Protection class IEC	Safety class I (I)		
Glow-wire test	850/30 [Temperature 850 °C, duration 30 s]		

CoreLine Waterproof

Controls and Dimming

Dimmable	Yes
----------	-----

Mechanical and Housing

Housing material	Polycarbonate
Reflector material	Steel
Optic material	-
Optical cover/lens material	Polycarbonate
Fixation material	Stainless steel
Optical cover/lens finish	Textured
Overall length	1530 mm
Overall width	87 mm
Overall height	96 mm

Approval and Application

Ingress protection code	IP65 [Dust penetration-protected, jet-proof]
Mech. impact protection code	IK08 [5 J vandal-protected]

Initial Performance (IEC Compliant)

Initial luminous flux	3400 lm
Luminous flux tolerance	+/-10%
Initial LED luminaire efficacy	117 lm/W
Init. Corr. colour temperature	4000 K
Init. colour rendering index	≥80
Initial chromaticity	(0.38, 0.38) SDCM <3.5
Initial input power	29 W
Power consumption tolerance	+/-10%

Over Time Performance (IEC Compliant)

Driver failure rate at 5,000 hours	1 %
Median useful life L70B50	50000 h
Median useful life L80B50	30000 h
Median useful life L90B50	15000 h

Application Conditions

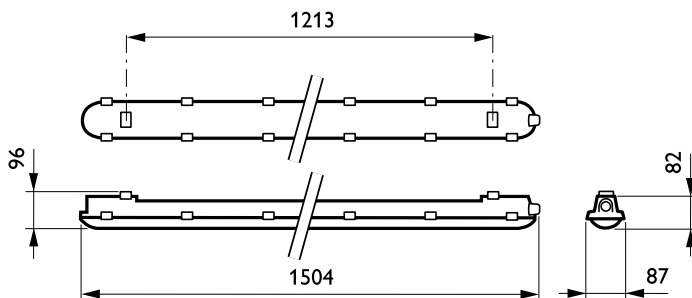
Ambient temperature range	-25 to +35 °C
Average ambient temperature	25 °C
Maximum dimming level	1%
Suitable for random switching	Yes (relates to presence/ movement detection and daylight harvesting)

Product Data

Full product code	871869688308200
Order product name	WT120C LED34S/840 PSD L1500
EAN/UPC – product	8718696883082
Order code	88308200
Numerator – quantity per pack	1
Numerator – packs per outer box	1
Material no. (12NC)	910500458245
Net weight (piece)	1.820 kg

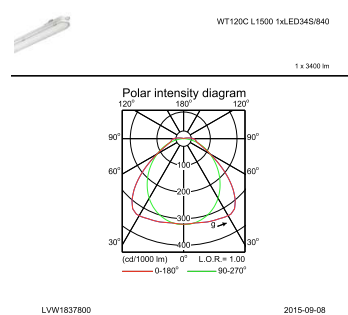
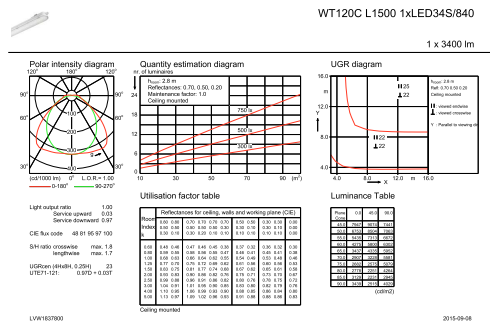


Dimensional drawing



CoreLine Waterproof WT120C

Photometric data



IFGU1_WT120C L1500 1xLED34S840.EPS

IFPC1_WT120C L1500 1xLED34S840.EPS

