



# CoreLine Waterproof

## WT120C LED40S/840 PSD L1200

Coreline Waterproof - LED Module, system flux 4000 lm - 840 neutral white - Power supply unit with DALI interface

Whether for a new building or renovation of an existing space, customers want lighting solutions that provide quality of light and substantial energy and maintenance savings. The new CoreLine Waterproof range of LED products can be used to replace traditional waterproof luminaires with fluorescent lamps. The process of selecting, installing and maintaining is so easy – it's a simple switch.

### Product data

General Information		Flammability mark	F [ For mounting on normally flammable surfaces]
Number of light sources	1 [ 1 pc]	CE mark	CE mark
Lamp family code	LED40S [ LED Module, system flux 4000 lm]	ENEC mark	ENEC mark
Light source colour	840 neutral white	UL mark	No
Light source replaceable	No	Constant light output	No
Number of gear units	1 unit	Number of products on MCB	24
Driver/power unit/transformer	PSD [ Power supply unit with DALI interface]	RoHS mark	RoHS mark
Driver included	Yes	Product Family Code	WT120C [ Coreline Waterproof]
Optic type	No [ -]	Operating and Electrical	
Optical cover/lens type	PC [ Polycarbonate bowl/cover]	Input voltage	220 to 240 V
Luminaire light beam spread	110°	Input frequency	50 to 60 Hz
Emergency lighting	No [ -]	Inrush current	21 A
Control interface	DALI	Inrush time	0.280 ms
Connection	PI [ Push-in connector 3-pole]	Power factor (min.)	0.9
Cable	-		
Protection class IEC	Safety class I (I)		
Glow-wire test	850/30 [ Temperature 850 °C, duration 30 s]		

# CoreLine Waterproof

## Controls and Dimming

Dimmable	Yes
----------	-----

## Mechanical and Housing

Housing material	Polycarbonate
Reflector material	Steel
Optic material	-
Optical cover/lens material	Polycarbonate
Fixation material	Stainless steel
Optical cover/lens finish	Textured
Overall length	1250 mm
Overall width	87 mm
Overall height	96 mm

## Approval and Application

Ingress protection code	IP65 [ Dust penetration-protected, jet-proof]
Mech. impact protection code	IK08 [ 5 J vandal-protected]

## Initial Performance (IEC Compliant)

Initial luminous flux	4000 lm
Luminous flux tolerance	+/-10%
Initial LED luminaire efficacy	111 lm/W
Init. Corr. colour temperature	4000 K
Init. colour rendering index	≥80
Initial chromaticity	(0.38, 0.38) SDCM <3.5
Initial input power	36 W
Power consumption tolerance	+/-10%

## Over Time Performance (IEC Compliant)

Driver failure rate at 5,000 hours	1 %
Median useful life L70B50	50000 h
Median useful life L80B50	30000 h
Median useful life L90B50	15000 h

## Application Conditions

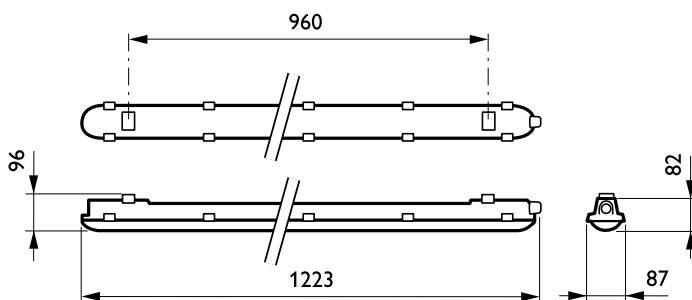
Ambient temperature range	-25 to +35 °C
Average ambient temperature	25 °C
Maximum dimming level	1%
Suitable for random switching	Yes (relates to presence/ movement detection and daylight harvesting)

## Product Data

Full product code	871869688309900
Order product name	WT120C LED40S/840 PSD L1200
EAN/UPC – product	8718696883099
Order code	88309900
Numerator – quantity per pack	1
Numerator – packs per outer box	1
Material no. (12NC)	910500458246
Net weight (piece)	1.530 kg

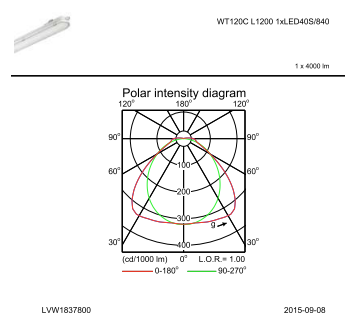
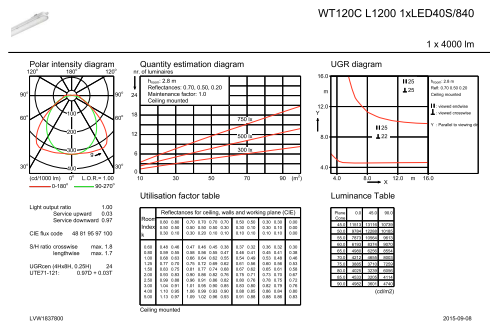


## Dimensional drawing



CoreLine Waterproof WT120C

### Photometric data



**IFGU1\_WT120C L1200 1xLED40S840.EPS**

IFPC1\_WT120C L1200 1xLED40S840.EPS

