



Wet & Dry epilator

- For legs, body and face
- 1 accessory
- Cordless and rechargeable
- S-shaped handle design

BRE610/00

Firmly grips even fine hairs

Easy to steer for effortless long lasting results

The S-shaped handle helps steer all over the body. The widest head with ceramic discs epilates close to the skin to grab even fine hairs for quick and long lasting results . Wet & dry use with 1 accessory.

Benefits

Easy and effortless usage

- S-shaped handle for easy maneuverability on all body areas
- Wet & dry for use in bath or shower
- Unique light ensures you don't miss fine hairs

Thorough results

- Epilation head of unique ceramic material for better grip
- Extra wide epilator head

- Patented epilation system
- Always use at a 90 degree angle for the best performance

Personalized body routine solutions

- Body care heads for personalized and convenient solutions
- Includes massage cap

PHILIPS

Satinelle Advanced

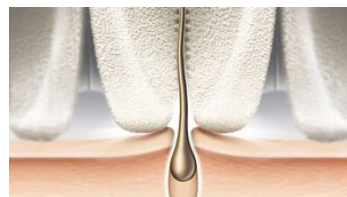
Features

S-shaped handle design



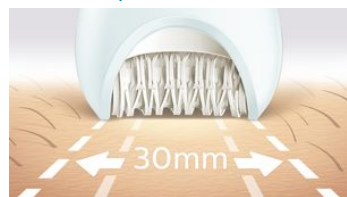
The ergonomic handle is easy to hold and steer for maximum control and optimal reach on all body areas.

Micro ridged ceramic discs



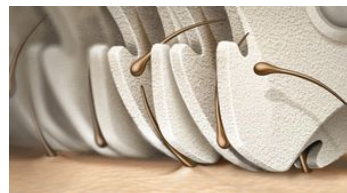
Our epilator head is unique in being made from a rough ceramic material that grabs hair firmly, even fine hairs won't slip from its grip.

Extra wide epilator head



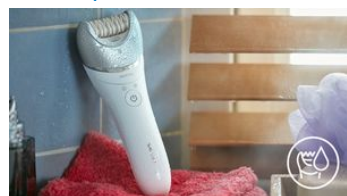
Extra wide epilator head covers more skin with every stroke for faster hair removal.

Patented epilation system



All of our Philips epilators have a unique system where the tweezers lift and gather the lying hair, guide them to the pulling point firmly grabbing and pulling out the hair. Combined with the unique round ceramic discs it epilates closer to the skin for optimal results and more gentleness.

Wet & dry use



For a gentle and comfortable use during your shower or bath routine with anti slip grip for optimal wet & dry use.

Specifications

[field not found 'disclaimer_text']

Accessories

Massage cap Yes

Opti-light



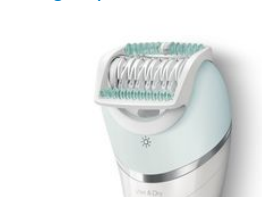
Unique light ensures you don't miss fine hairs for best epilation results for all body parts.

Body care heads



Body care heads will bring more personalized and convenient solutions to her individual beauty routine for hair removal and beyond.

Massage cap



Massage cap eases the epilation sensation.

90 degree angle



The Philips Satinelle will always give you the best performance when used at a 90 degree angle.

Pouch Basic pouch
Cleaning brush Yes

Satinelle Advanced

Ease of use

Wet and dry use	Yes
Opti-light	Yes
Cordless	Yes
Handle	S-shape handle

Performance

Epilation discs	Ceramic discs
Epilation system	Patented epilation system
Epilator head	30 mm

Features

Speed settings	2 settings
----------------	------------

Power

Battery Type	Lithium-ion
Usage time	up to 40 minutes
Charging	5 min quick charge
	Rechargeable
	1.5 hour charging time

Technical specifications

Number of catching points	32
Number of discs	17
Pulling actions/second speed 1	960

Pulling actions/second speed 2	1066
Voltage	15V / 5.4W

Packaging dimensions

Height	18.50 cm
Width	14.80 cm
Depth	6.50 cm
Nett weight	0.28 kg
Gross weight	0.41 kg
EAN	08710103757009
Number of products included	1
Country of origin	CN
Harmonised Systems Code	851030

Outer Carton

Length	27.80 cm
Width	15.60 cm
Height	20.00 cm
Gross weight	1.83 kg
EAN	18710103757006
Number of consumer packagings	4



data subject to change
2018, June 7

Version: 4.5.1
EAN: 08710103757009

© 2018 Koninklijke Philips N.V.
All rights reserved.

Specifications are subject to change without notice. Trademarks are the property of Koninklijke Philips N.V. or their respective owners.

www.philips.com